

DIAMOND<>FURR® Pat.

LATH ATTACHMENT SYSTEM

PRODUCT ID: DFW-375

WEEP SCREED

DESCRIPTION: The Diamond-Furr *Weep Screed* is a unique patent pending design that offers the first real solution to the moisture intrusion problems that have plagued the plastering industry for decades.

The Diamond-Furr *Weep Screed* (pt # DFW-375) is designed to be used just like a conventional weep screed at the base of a 3-coat plaster wall. The Diamond-Furr difference is the built-in furring strip which provides an uninterrupted 3/8" furring as well as a flexible connection point for metal lath. The tie wire connection effectively eliminates 100% of the fastener penetrations through the moisture barrier at these critical points. It also means that the lath never comes in contact with the moisture barrier which removes the probability of accidental tears by over tightened screws in the last line of defense.

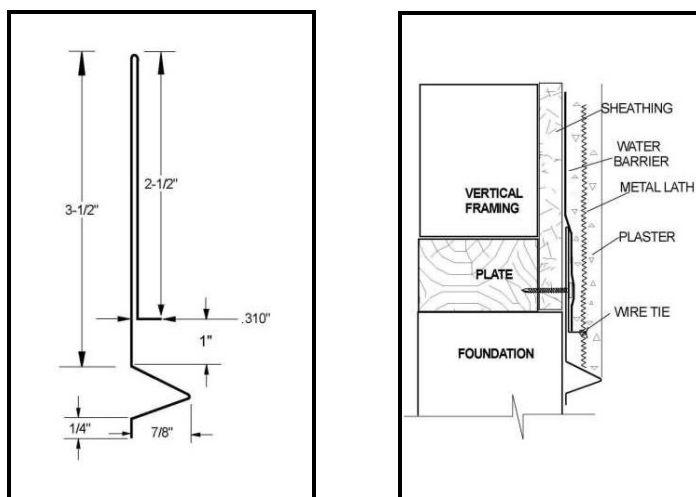
Another advantage of the Diamond-Furr *Weep Screed* is that it removes the need for additional petroleum based peel and stick moisture barrier products which allows the plaster at the termination point to reach the full 7/8" depth.

We recommend using the Diamond-Furr Termination Trims in conjunction with the ICC approved (ESR-3232) Diamond-Furr *Furring Strips* for a complete system and the utmost protection against moisture intrusion.

MATERIAL: 26 GA Galvanized Steel G90, Also available in Stainless Steel – Call for Details

ASTM: A653, LFQ, C1063, C841, C847, A653, C1047, A924, Fed. Spec QQ-S-775-D,

LENGTH: Standard: 10 ft.



BRAND X METALS, INC.

1641 So. Sinclair Street ♦ Anaheim, CA 92806 ♦ PH: (714) 978-3600 ♦ FAX: (714) 978-3601

www.brandxmetals.com