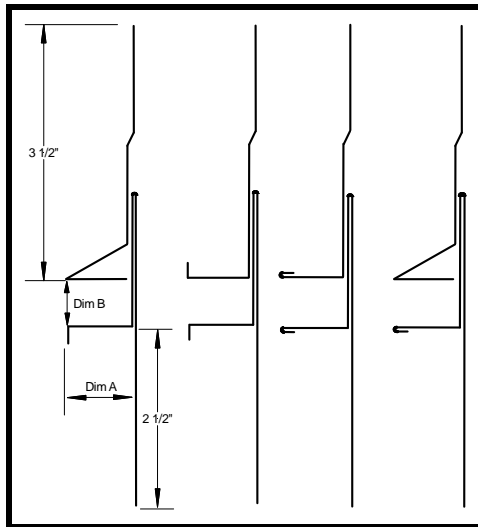




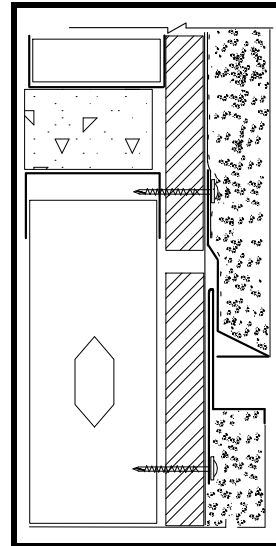
## X-SLIDE EXPANSION JOINT

PRODUCT ID: **XSLD**

Compare to: M-SLIDE



STYLE: A, B, C, D



**STYLE A:** Weep upper flange, standard plaster key lower flange

**STYLE B:** Standard plaster keys

**STYLE C:** Hemmed for smooth finish

**STYLE D:** Weep upper and hemmed lower flange

**DESCRIPTION:** The X-Slide is a superior water management 2-piece expansion joint which outperforms the traditional #40 expansion joint design. X-Slide is designed with the architect in mind by offering a variety of flange options for distinct application needs while creating a clean and distinct reveal. The X-Slide can provide up to 1" in vertical travel.

**MATERIAL / THICKNESS:** .040" Aluminum, 26 GA Galvanized Steel and 26 GA Stainless Steel

**ASTM:** A653, LFQ, C1063, B209, B69

**LENGTH:** Standard: 10 ft.

**AVAILABLE SIZES:**

GROUND (DIM. A)	REVEAL SIZE (DIM. B)
1/2"	1/2"
5/8"	3/4"
3/4"	1"
7/8"	1-1/2"
1"	