



## VERTICAL H MOLDING

**PRODUCT ID: CPPH**

Compare to: V1

**DESCRIPTION:** CPPH for 5/16" fiber cement panels provides a 1/2" flat detail between panels and the returns on both sides both hold and conceal the cut edges of the panel.

VERTICAL APPLICATIONS ONLY

**MATERIAL:** Aluminum Alloy 6063 T5 **ASTM:** B 221

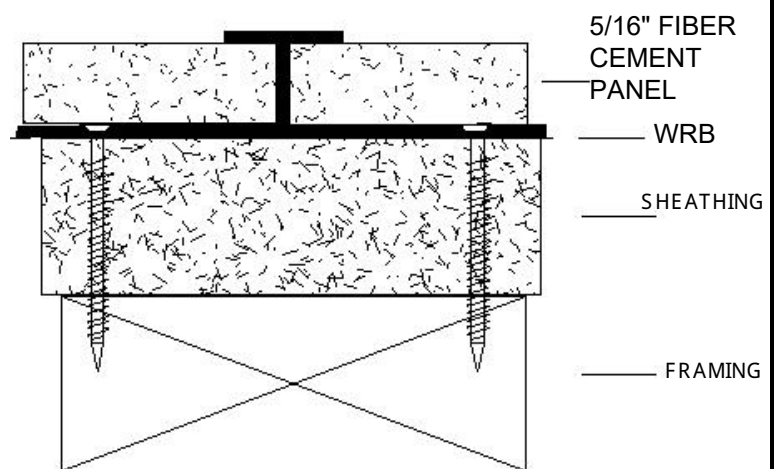
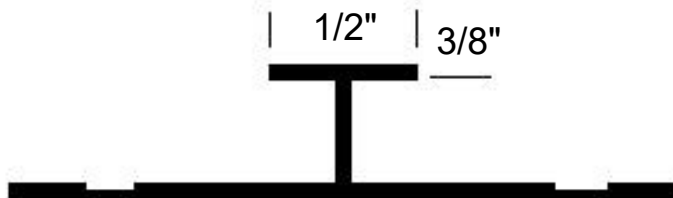
**THICKNESS:** Nominal .050

**LENGTH:** Standard: 10 ft.

**FINISH:** Standard - Clear Anodized (Architectural 200R1 med. Etch AAM32C10A21)

Also available:

- Alodine® or Chem-Film a.k.a. 'chemical conversion'
- Custom anodized finishes
- Kynar® fluoro-polymer extrusion coating



**BRAND X METALS, INC.**

1641 S. Sinclair St. ♦ Anaheim, CA 92806 ♦ PH: 714-978-3600 ♦ FAX: 714-978-3601

[www.brandxmetals.com](http://www.brandxmetals.com)