



CPPV-B 375-50 INSERT

PRODUCT ID: CPPV-B 375-50

Compare to: V4, V5

DESCRIPTION: The combination of the CPPV-A with our CPPV-B 375-50 insert provides a clean finished reveal in a fiber cement panel installation. The flanges of the insert cover the edges of fiber cement board hiding cut edges

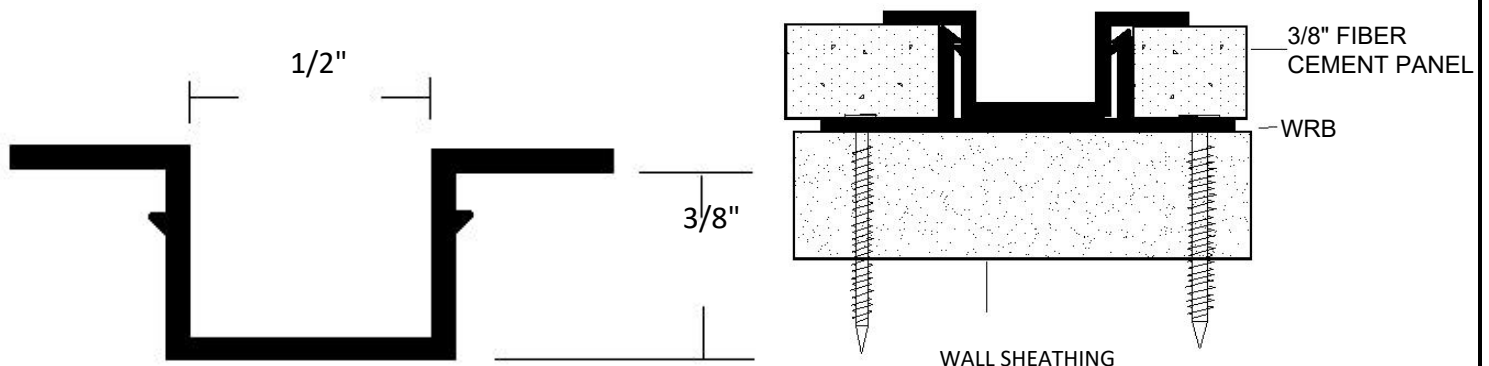
VERTICAL APPLICATIONS ONLY

MATERIAL: Aluminum Alloy 6063 T5 **ASTM:** B 221

THICKNESS: Nominal .050

LENGTH: Standard: 10 ft.

FINISH: Standard - Clear Anodized (Architectural 200R1 med. Etch AAM32C10A21)



BRAND X METALS, INC.

1641 S. Sinclair St. ♦ Anaheim, CA 92806 ♦ PH: 714-978-3600 ♦ FAX: 714-978-3601

www.brandxmetals.com