



CEMENT PANEL INSERT 3/8" - 3/4"

PRODUCT ID: CPPV-B 375-75

Compare to: V41, V42

DESCRIPTION: Our CPPV-B 375-75 provides a clean, finished transition between 3/8" fiber cement panels and 3/8" lap siding or other 3/4" siding materials. The 3/8" flanges conceal field cut edges of materials.

VERTICAL APPLICATIONS ONLY

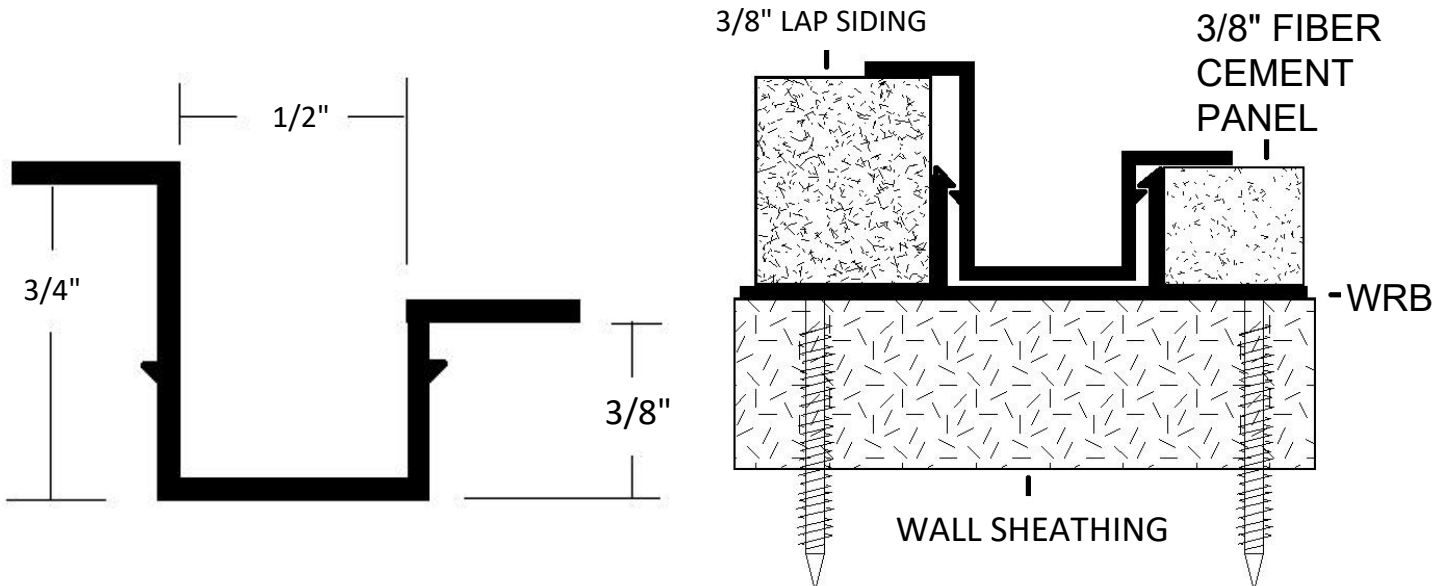
MATERIAL: Aluminum Alloy 6063 T5 **ASTM:** B 221

THICKNESS: Nominal .050

LENGTH: Standard: 10 ft.

FINISH: Standard - Clear Anodized (Architectural 200R1 med. Etch AAM32C10A21) Also available:

- Alodine® or Chem-Film a.k.a. 'chemical conversion'
- Custom anodized finishes
- Kynar® fluoro-polymer extrusion coating



BRAND X METALS, INC.

1641 S. Sinclair St. ♦ Anaheim, CA 92806 ♦ PH: 714-978-3600 ♦ FAX: 714-978-3601

www.brandxmetals.com