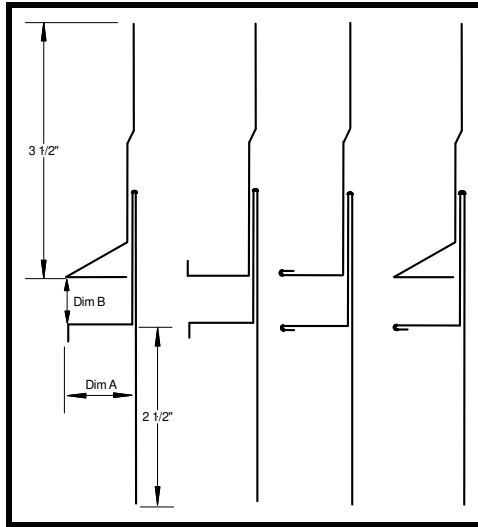


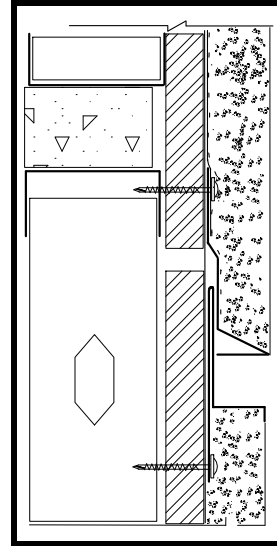


X-SLIDE EXPANSION JOINT

PRODUCT ID: XSLD



STYLE: A, B, C, D



STYLE A: Weep upper flange, standard plaster key lower flange

STYLE B: Standard plaster keys

STYLE C: Hemmed for smooth finish

STYLE D: Weep upper and hemmed lower flange

DESCRIPTION: The X-Slide is a water management 2-piece expansion joint which outperforms the traditional #40 expansion joint design. X-Slide is designed with the architect, and contractor in mind by offering a variety of flange options for distinct application needs while creating a clean and distinct reveal. The X-Slide can provide up to 1" in vertical travel.

MATERIAL /

THICKNESS: .040" Aluminum, 26 GA Galvanized Steel and 26 GA Stainless Steel

ASTM: A653, LFQ, C1063, B209, B69

LENGTH: Standard: 10 ft.

CUSTOM SIZES

AVAILABLE

GROUND (DIM. A)	REVEAL SIZE (DIM. B)
1/2"	1/2"
5/8"	3/4"
3/4"	1"
7/8"	1-1/2"
1"	