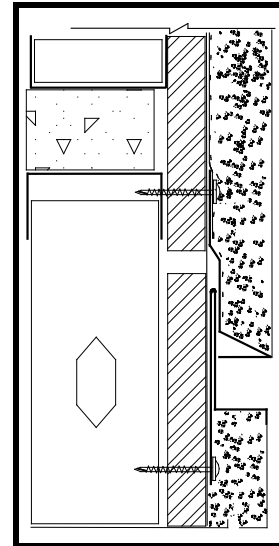
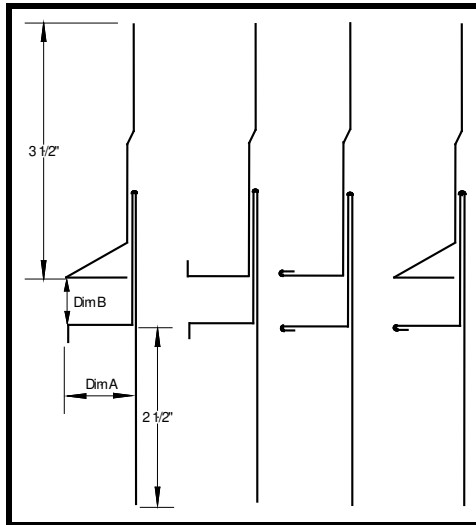




X-SLIDE EXPANSION JOINT

PRODUCT ID: XSLD

Compare to: M-SLIDE



STYLE: A, B, C, D

STYLE A: Weep upper flange, standard plaster key lower flange

STYLE B: Standard plaster keys

STYLE C: Hemmed for smooth finish

STYLE D: Weep upper and hemmed lower flange

DESCRIPTION: The X-Slide is a superior water management 2-piece expansion joint which out performs the traditional #40 expansion joint design. X-Slide is designed with the architect in mind by offering a variety of flange options for distinct application needs while creating a clean and distinct reveal. The X-Slide can provide up to 1" in vertical travel in horizontal applications. The X-slide is not recommended for vertical applications.

MATERIAL /

THICKNESS: G90 Galv. Steel, .040" Aluminum Clear Anodized or Paint Grade, I and 26 GA 304 Stainless Steel: #2 Bright and #4 Brushed Finish

ASTM: A653, LFQ, C1063, B209, B69

LENGTH: Standard: 10 ft.

AVAILABLE SIZES:

DIM A. DEPTH OPTIONS	3/8"	1/2"	5/8"	3/4"	7/8"	1-3/8"	1-7/8"	2-3/8"	2-7/8"	3-7/8"
DIM B. WIDTH OPTIONS	1/4"	1/2"	3/4"	1"						
GAUGE	26	26	26	26	26	22	22	22	20	20