



***EXTRUDED ALUMINUM
DRYWALL TRIMS***



TABLE OF CONTENTS

DRYWALL REVEAL

- 1 DRYWALL REVEAL OVERVIEW
- 2 DRYWALL REVEAL ID CHART
- 3 DRYWALL REVEAL INTERSECTIONS & CORNERS
- 4 DRYWALL REVEAL RADIUS/CURVING

DRYWALL F REVEAL

- 5 DRYWALL F REVEAL OVERVIEW
- 6 DRYWALL F REVEAL ID CHART
- 7 DRYWALL F REVEAL INTERSECTIONS & CORNERS
- 8 DRYWALL F REVEAL RADIUS/CURVING

DRYWALL Z REVEAL

- 9 DRYWALL Z REVEAL OVERVIEW
- 10 DRYWALL Z REVEAL ID CHART
- 11 DRYWALL Z REVEAL INTERSECTIONS & CORNERS
- 12 DRYWALL Z REVEAL RADIUS/CURVING

DRYWALL CEILING TRIM

- 13 DRYWALL CEILING TRIM OVERVIEW
- 14 DRYWALL CEILING TRIM ID CHART
- 15 DRYWALL CEILING TRIM INTERSECTIONS & CORNERS
- 16 DRYWALL CEILING TRIM RADIUS/CURVING



TABLE OF CONTENTS

DRYWALL L METAL

- 17 DRYWALL L METAL OVERVIEW
- 18 DRYWALL L METAL ID CHART
- 19 DRYWALL L METAL RADIUS/CURVING

DRYWALL CORNER TRIM

- 20 DRYWALL CORNER TRIM OVERVIEW
- 21 DRYWALL CORNER TRIM ID CHART

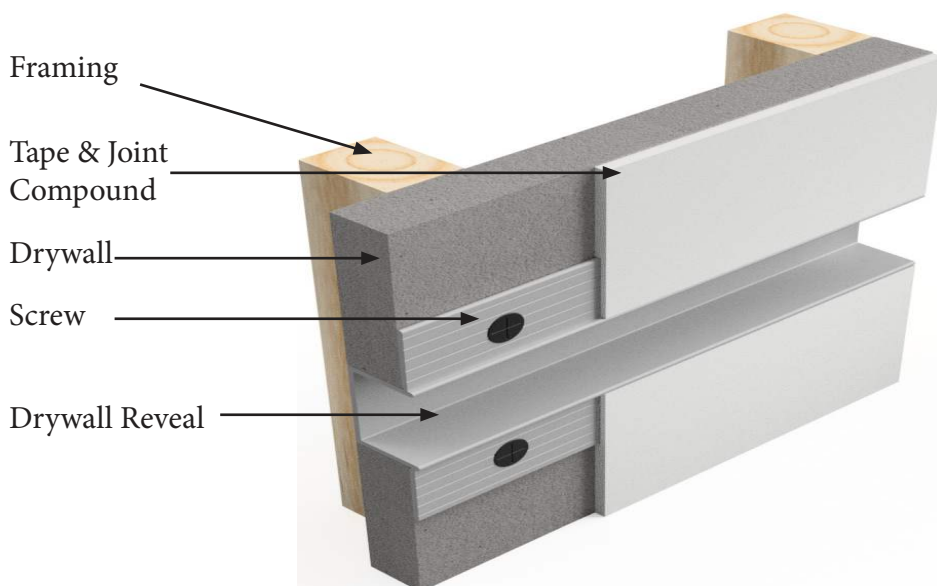
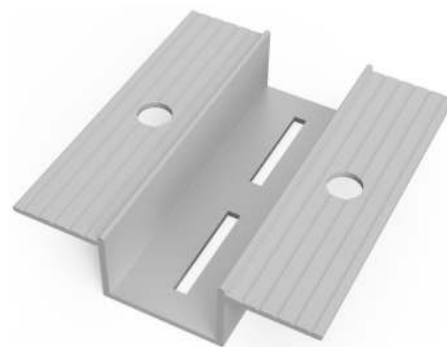
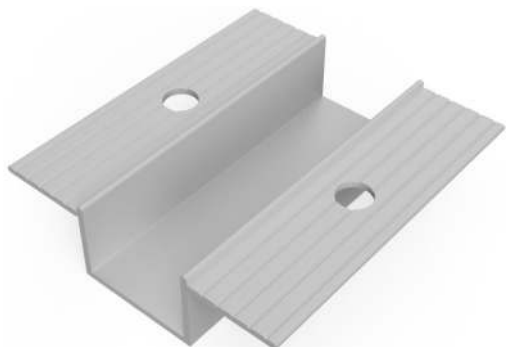
DRYWALL END CAP

- 22 DRYWALL END CAP OVERVIEW
- 23 DRYWALL END CAP ID CHART
- 24 DRYWALL END CAP RADIUS/CURVING

DRYWALL SLIP ON END CAP

- 25 DRYWALL SLIP ON END CAP OVERVIEW
- 26 DRYWALL SIP ON END CAP ID CHART
- 27 DRYWALL SIP ON END CAP RADIUS/CURVING

DRYWALL REVEAL OVERVIEW



DESCRIPTION

Extruded Aluminum Drywall Reveal with tapered nail flanges. The DR trim can be installed both vertically and horizontally to create a dramatic look on interior walls. The tapered nailing flanges allow for applying tape and joint compound to create a clean finished edge.

MATERIAL

MATERIAL: Aluminum Alloy 6063 T5 ASTM: B221
THICKNESS: Nominal .050
LENGTH: Standard 10 ft.
FINISH: Standard-Clear anodized Architectural 200R1 Medium Etch AAM32C10A21
 Also available: 'Mill Finish' for field painting and custom anodized colors.

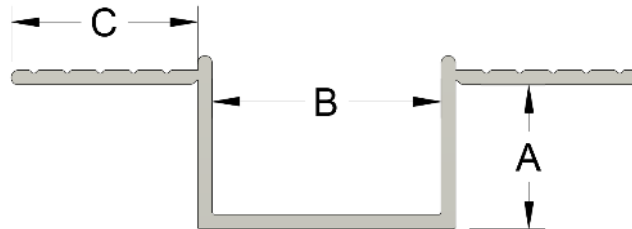
OPTIONS

Venting – All channel reveals from 1/2" to 4" can be vented if requested
Radius – Drywall reveals can be curved to meet your required job specifications (Radius Order Form)

EXCLUSIVE BREAK AWAY FLANGE



DRYWALL REVEAL ID CHART



ID	DIM A	DIM B	DIM C
DR 25-25	1/4"	1/4"	3/4"
DR 50-25	1/2"	1/4"	3/4"
DR 50-50	1/2"	1/2"	3/4"
DR 50-75	1/2"	3/4"	3/4"
DR 50-100	1/2"	1"	3/4"
DR 50-200	1/2"	2"	3/4"
DR 625-25	5/8"	1/4"	3/4"
DR 625-375	5/8"	3/8"	3/4"
DR 625-50	5/8"	1/2"	3/4"
DR 625-625	5/8"	5/8"	3/4"
DR 625-75	5/8"	3/4"	3/4"
DR 625-100	5/8"	1"	3/4"
DR 625-150	5/8"	1-1/2"	3/4"
DR 625-200	5/8"	2"	3/4"
DR 625-300	5/8"	3"	3/4"

DRYWALL REVEAL INTERSECTIONS & CORNERS

Mitered 3-way and 4-way configurations as well as inside and outside corners for both interior and exterior products. Intersection are miter cut and then welded on the nail flanges. The standard size is 6" x 6" but we will gladly fabricate whatever size your job requires for easier installation.

When intersections are not specified, our exclusive **BREAK AWAY** flanges are the only solution in the industry that allows you to butt these trims in a horizontal and vertical condition.

Our Custom One Piece Grids give you precise intersections to your exact specifications.

3-WAY



4-WAY



INSIDE CORNER



OUTSIDE CORNER



L ANGLE CORNER



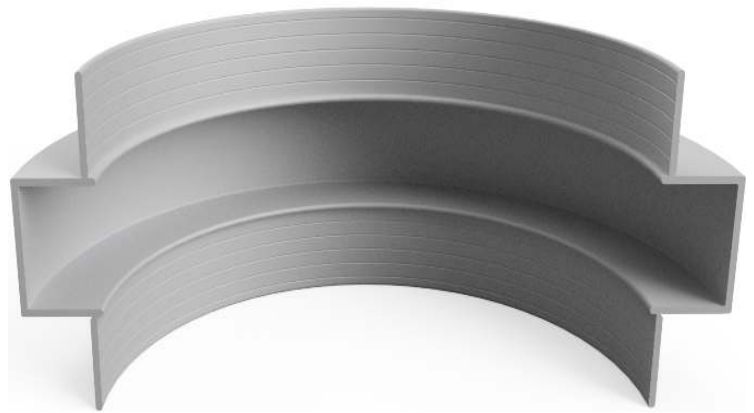
DRYWALL REVEAL RADIUS/CURVING

Brand X Metals, Inc. Has in-house capabilities to curve interior and exterior trims for your job specifications.
The DR Series trims can be curved in three directions.

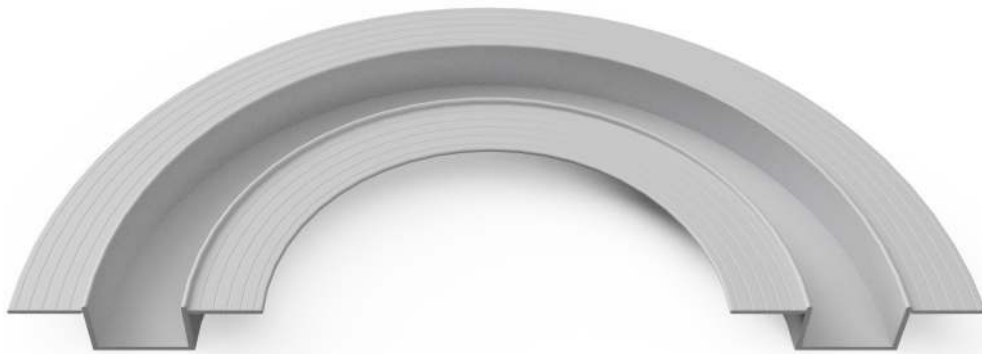
TYPE-1



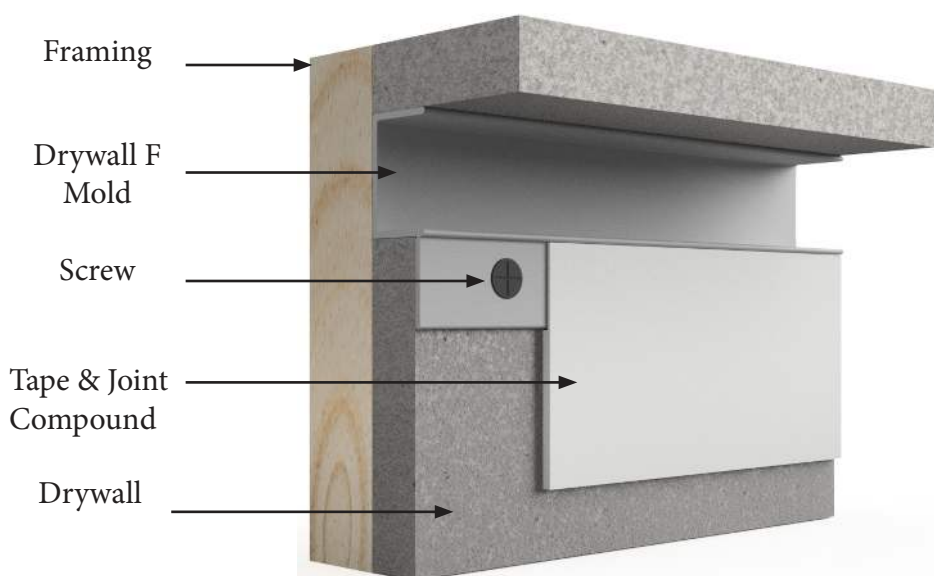
TYPE-2



TYPE-3



DRYWALL F MOLD REVEAL OVERVIEW



DESCRIPTION

The Extruded Aluminum Drywall 'F' Reveal with tapered nail flange is used when a reveal is needed against a sill, jamb, ceiling or other finish material. It can be installed both vertically and horizontally to create a dramatic look on interior walls. The tapered nailing flanges allow for applying tape and joint compound to create a clean finished edge.

MATERIAL

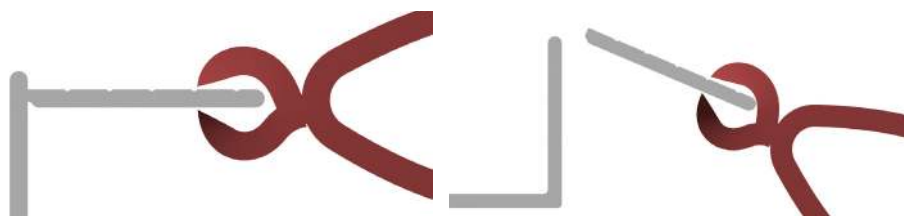
MATERIAL: Aluminum Alloy 6063
T5 ASTM: B221
THICKNESS: Nominal .050
LENGTH: Standard 10 ft.
FINISH: Standard-Clear anodized
Architectural 200R1 Medium Etch
AAM32C10A21

Also available: 'Mill Finish' for field painting and custom anodized colors.

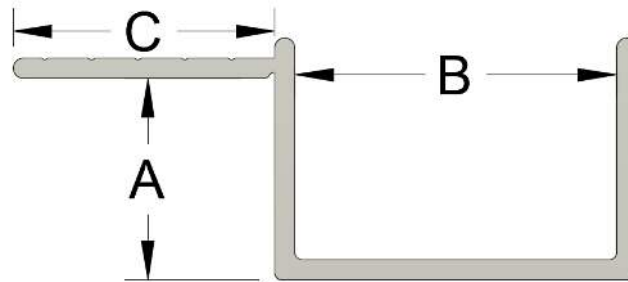
OPTIONS

Venting – All F reveals from 1/2" to 4" can be vented if requested
Radius – Drywall reveals can be curved to meet your required job specifications (Radius Order Form)

EXCLUSIVE BREAK AWAY FLANGE



DRYWALL F MOLD REVEAL ID CHART



ID	DIM A	DIM B	DIM C
DRF 25-25	1/4"	1/4"	3/4"
DRF 50-25	1/2"	1/4"	3/4"
DRF 50-50	1/2"	1/2"	3/4"
DRF 50-75	1/2"	3/4"	3/4"
DRF 50-100	1/2"	1"	3/4"
DRF 50-200	1/2"	2"	3/4"
DRF 625-25	5/8"	1/4"	3/4"
DRF 625-375	5/8"	3/8"	3/4"
DRF 625-50	5/8"	1/2"	3/4"
DRF 625-625	5/8"	5/8"	3/4"
DRF 625-75	5/8"	3/4"	3/4"
DRF 625-100	5/8"	1"	3/4"
DRF 625-150	5/8"	1-1/2"	3/4"
DRF 625-200	5/8"	2"	3/4"
DRF 625-300	5/8"	3"	3/4"

DRYWALL REVEAL INTERSECTIONS & CORNERS

Inside and outside corners are miter cut and then welded on the nail flanges. The standard size is 6" x 6" but we will gladly fabricate whatever size your job requires for easier installation. When intersections are not specified, our exclusive **BREAK AWAY** flanges are the only solution in the industry that allows you to butt these trims in a horizontal and vertical condition.

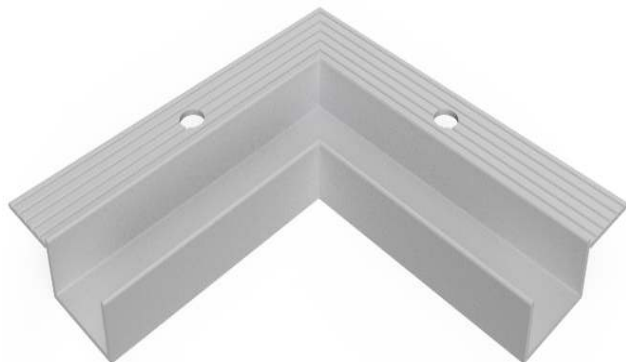
INSIDE CORNER



OUTSIDE CORNER



2-WAY L OUTSIDE CORNER



2-WAY L INSIDE CORNER



DRYWALL REVEAL RADIUS/CURVING

Brand X Metals, Inc. has in-house capabilities to curve interior and exterior trims for your job specifications.
F Mold (DRF) can be curved in all four directions.

TYPE-1



TYPE -2



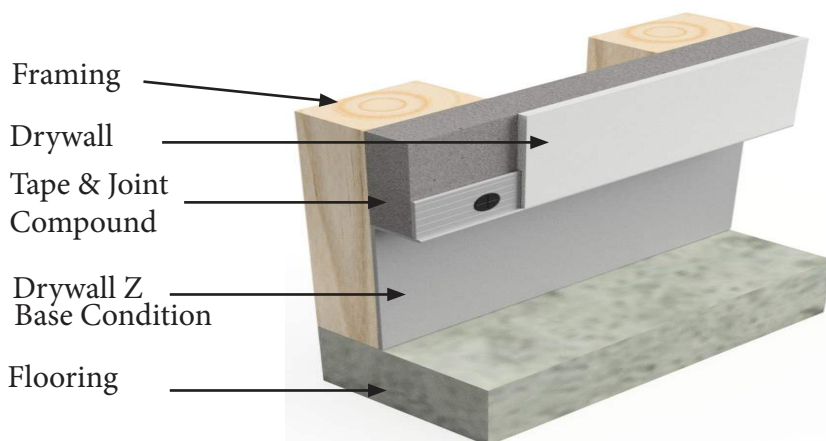
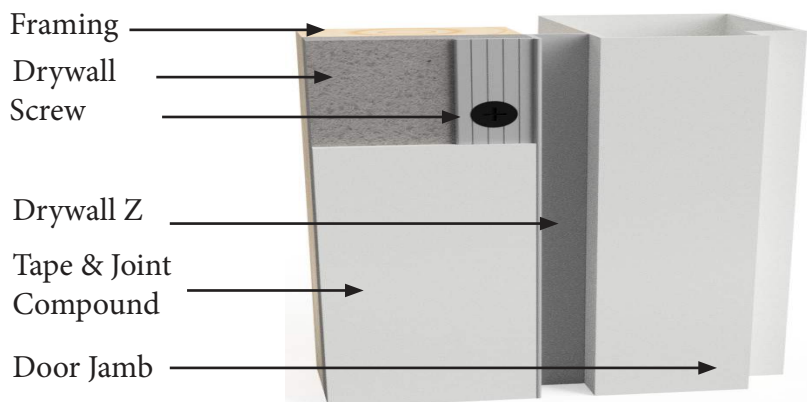
TYPE-3



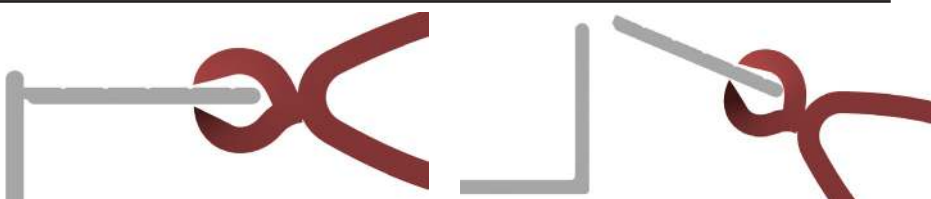
TYPE-4



DRYWALL Z REVEAL OVERVIEW



EXCLUSIVE BREAK AWAY FLANGE



DESCRIPTION

The Extruded Aluminum 'Drywall Z' Reveal trim with tapered nail flanges creates a shadow reveal when used next to doors, windows and at the base of walls. The tapered flange allows for applying tape and joint compound for a clean finish.

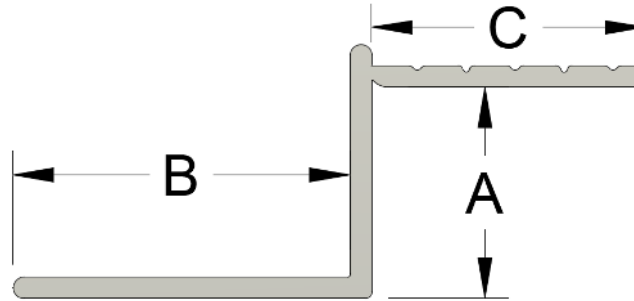
MATERIAL

MATERIAL: Aluminum Alloy 6063 T5 ASTM: B221
THICKNESS: Nominal .050
LENGTH: Standard 10 ft.
FINISH: Standard-Clear anodized Architectural 200R1 Medium Etch AAM32C10A21
Also available: 'Mill Finish' for field painting and custom anodized colors.

OPTIONS

Radius – Drywall Z reveals can be curved to meet your required job specifications (Radius Order Form)

DRYWALL Z REVEAL ID CHART



ID	DIM A	DIM B	DIM C
DZ 25-25	1/4"	1/4"	3/4"
DZ 50-25	1/2"	1/4"	3/4"
DZ 50-375	1/2"	3/8"	3/4"
DZ 50-50	1/2"	1/2"	3/4"
DZ 50-625	1/2"	5/8"	3/4"
DZ 50-75	1/2"	3/4"	3/4"
DZ 50-100	1/2"	1"	3/4"
DZ 50-200	1/2"	2"	3/4"
DZ 625-25	5/8"	1/4"	3/4"
DZ 625-375	5/8"	3/8"	3/4"
DZ 625-50	5/8"	1/2"	3/4"
DZ 625-625	5/8"	5/8"	3/4"
DZ 625-75	5/8"	3/4"	3/4"
DZ 625-100	5/8"	1"	3/4"
DZ 625-150	5/8"	1-1/2"	3/4"
DZ 625-200	5/8"	2"	3/4"
DZ 625-300	5/8"	3"	3/4"
DZ 625-400	5/8"	4"	3/4"

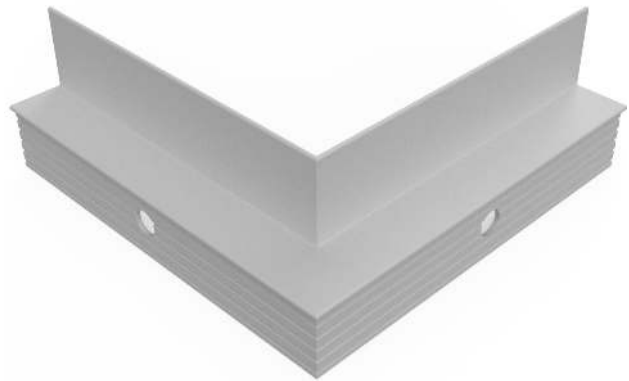
DRYWALL Z REVEAL INTERSECTIONS & CORNERS

Inside and outside corners are miter cut and then welded on the nail flanges. The standard size is 6" x 6" but we will gladly fabricate whatever size your job requires for easier installation. When intersections are not specified, our exclusive **BREAK AWAY** flanges are the only solution in the industry that allows you to butt these trims in a horizontal and vertical condition.

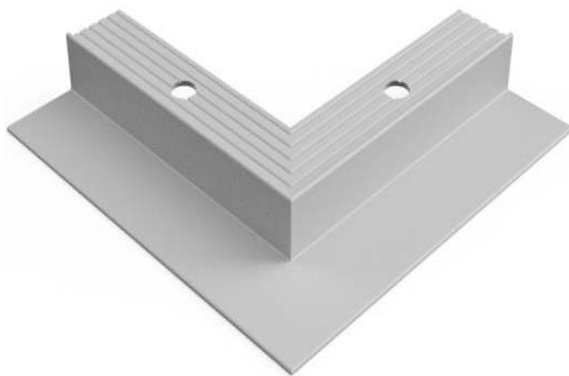
INSIDE CORNER



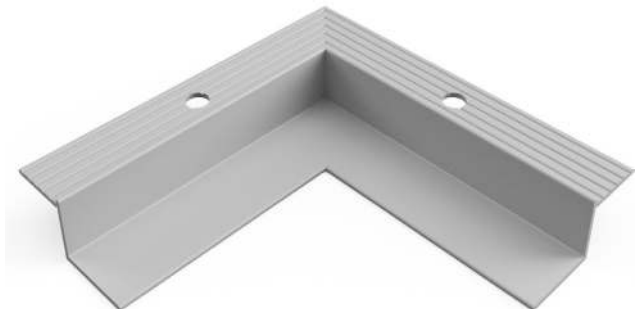
OUTSIDE CORNER



2-WAY L OUTSIDE CORNER



2-WAY L INSIDE CORNER



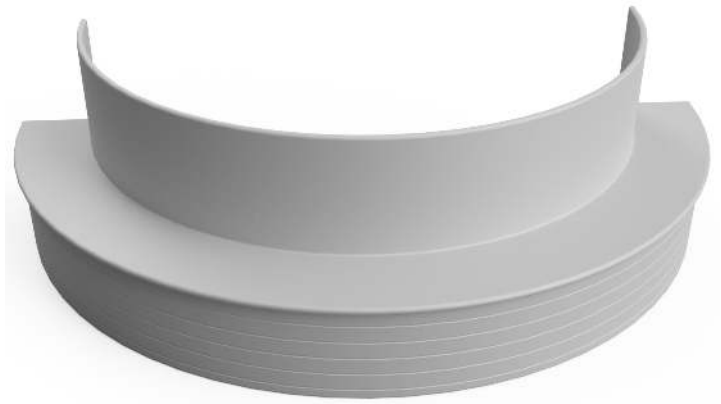
DRYWALL Z REVEAL RADIUS/CURVING

Brand X Metals, Inc. has in-house capabilities to curve interior and exterior trims for your job specifications.
The DZ Series trims can be curved in four directions.

TYPE-1



TYPE-2



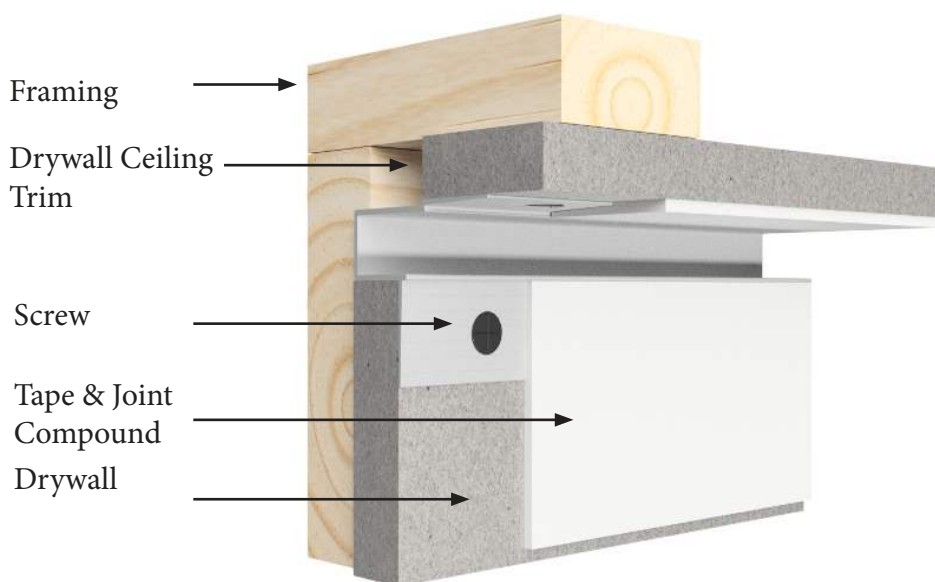
TYPE-3



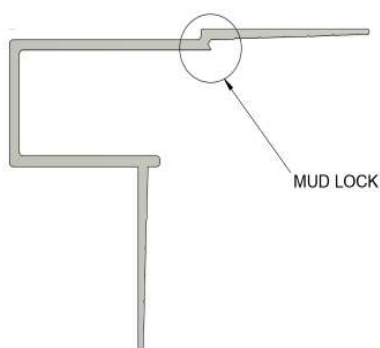
TYPE-4



DRYWALL CEILING TRIM OVERVIEW



EXCLUSIVE MUD LOCK



DESCRIPTION

The Extruded Aluminum Drywall Ceiling Trim, is a decorative and functional element, is used to create a transition between the walls and ceiling, giving the illusion of a floating wall. It also provides support to the perimeter of the drywall ceiling, ensuring it stays securely in place and does not sag or bow over time.

MATERIAL

MATERIAL: Aluminum Alloy 6063
T5 ASTM: B221
THICKNESS: Nominal .050
LENGTH: Standard 10 ft.
FINISH: Standard-Clear anodized
Architectural 200R1 Medium Etch
AAM32C10A21

Also available: 'Mill Finish' for field painting and custom anodized colors.

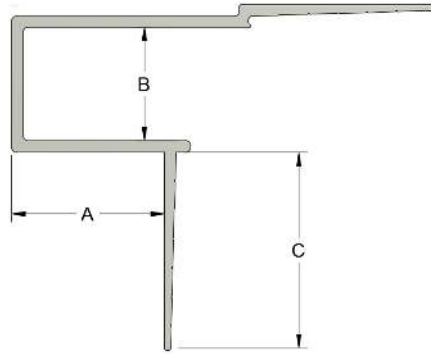
OPTIONS

Radius – Drywall Ceiling Trims can be curved to meet your required job specifications (Radius Order Form)

NOTES

USED FOR 1/2" & 5/8" DRYWALL

DRYWALL CEILING TRIM ID CHART



ID	DIM A	DIM B	DIM C
DRCT 50-50	1/2"	1/2"	3/4"
DRCT 50-75	1/2"	3/4"	3/4"
DRCT 50-100	1/2"	1"	3/4"
DRCT 625-50	5/8"	1/2"	3/4"
DRCT 625-75	5/8"	3/4"	3/4"
DRCT 625-100	5/8"	1"	3/4"

DRYWALL CEILING TRIM INTERSECTIONS & CORNERS

Inside and outside corners are miter cut and then welded on the nail flanges. The standard size is 6" x 6" but we will gladly fabricate whatever size your job requires for easier installation.

INSIDE CORNER



OUTSIDE CORNER



DRYWALL CEILING TRIM RADIUS/CURVING

Brand X Metals, Inc. has in-house capabilities to curve interior and exterior trims for your job specifications.
Drywall ceiling trim can be curved in all four directions.

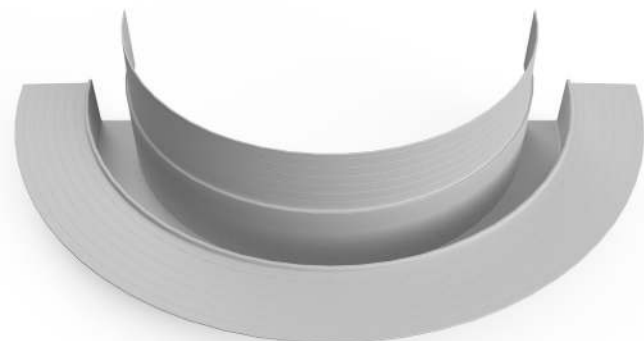
TYPE-1



TYPE-2



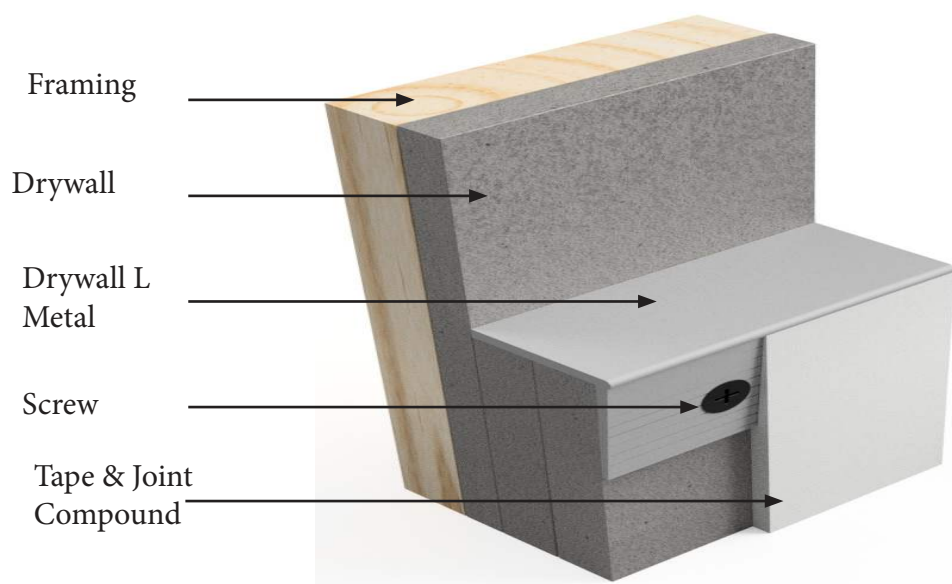
TYPE-3



TYPE-4



DRYWALL L METAL OVERVIEW



DESCRIPTION

Extruded Aluminum Drywall L Metal with tapered nail flanges. The DL trim can be installed both vertically and horizontally to create a dramatic look on interior walls. The tapered nailing flanges allow for applying tape and joint compound to create a clean finished edge.

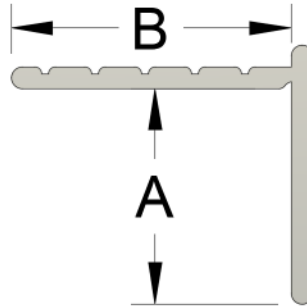
MATERIAL

MATERIAL: Aluminum Alloy 6063
T5 ASTM: B221
THICKNESS: Nominal .050
LENGTH: Standard 10 ft.
FINISH: Standard-Clear anodized Architectural 200R1 Medium Etch AAM32C10A21
Also available: 'Mill Finish' for field painting and custom anodized colors.

OPTIONS

Radius – Drywall L Metal can be curved to meet your required job specifications (Radius Order Form)

DRYWALL L METAL ID CHART



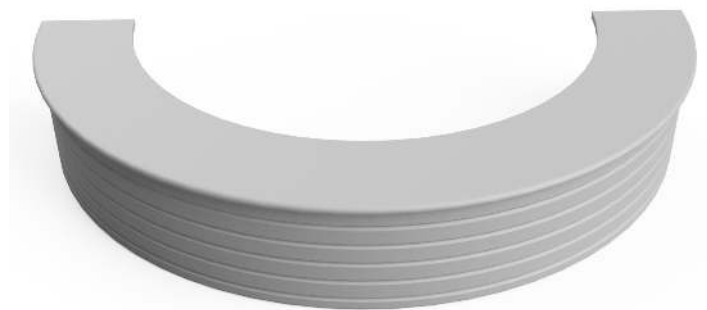
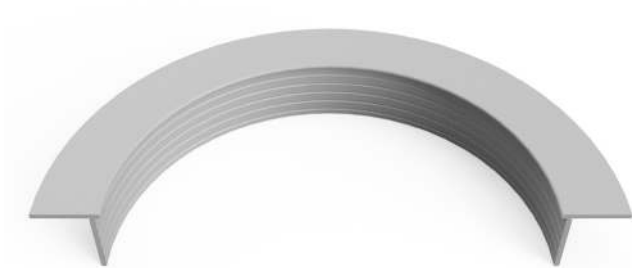
ID	DIM A	DIM B
DL 25	1/4"	3/4"
DL 375	3/8"	3/4"
DL 50	1/2"	3/4"
DL 625	5/8"	3/4"
DL 75	3/4"	3/4"
DL 100	1"	3/4"
DL 125	1 1/4"	3/4"
DL 150	1 1/2"	3/4"
DL 175	1 3/4"	3/4"
DL 200	2"	1-1/2"
DL 250	2-1/2"	1-1/2"
DL 300	3"	1-1/2"
DL 350	3-1/2"	1-1/2"
DL 400	4"	1-1/2"

DRYWALL L METAL RADIUS/CURVING

Brand X Metals, Inc. has in-house capabilities to curve interior and exterior trims for your job specifications.
L metal can be curved in all four directions.

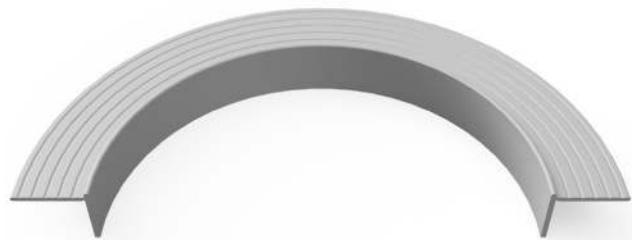
TYPE-1

TYPE-2



TYPE-3

TYPE-4



DRYWALL CORNER OVERVIEW



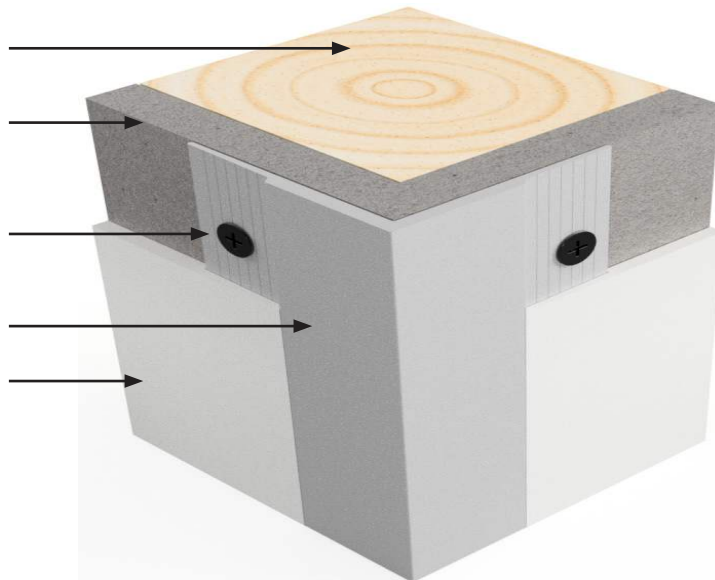
Framing

Drywall

Screw

Drywall L
Metal

Tape & Joint
Compound



DESCRIPTION

The Extruded Aluminum Drywall Corner Trim is engineered for areas of high traffic. The heavy duty corner extends 1-1/4" in each direction to provide protection. The tapered nail flange allows for a clean finish edge. Installation of the drywall corner trim is time saving as well as cost effective.

MATERIAL

MATERIAL: Aluminum Alloy 6063

T5 ASTM: B221

THICKNESS: Nominal .050

LENGTH: Standard 10 ft.

FINISH: Standard-Clear anodized
Architectural 200R1 Medium Etch
AAM32C10A21

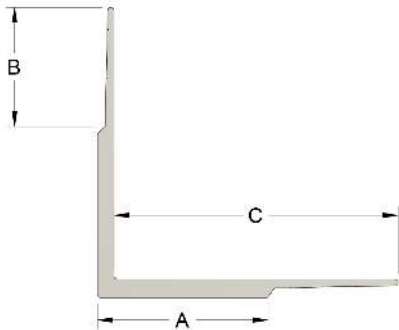
Also available: 'Mill Finish' for field
painting and custom anodized colors.

OPTIONS



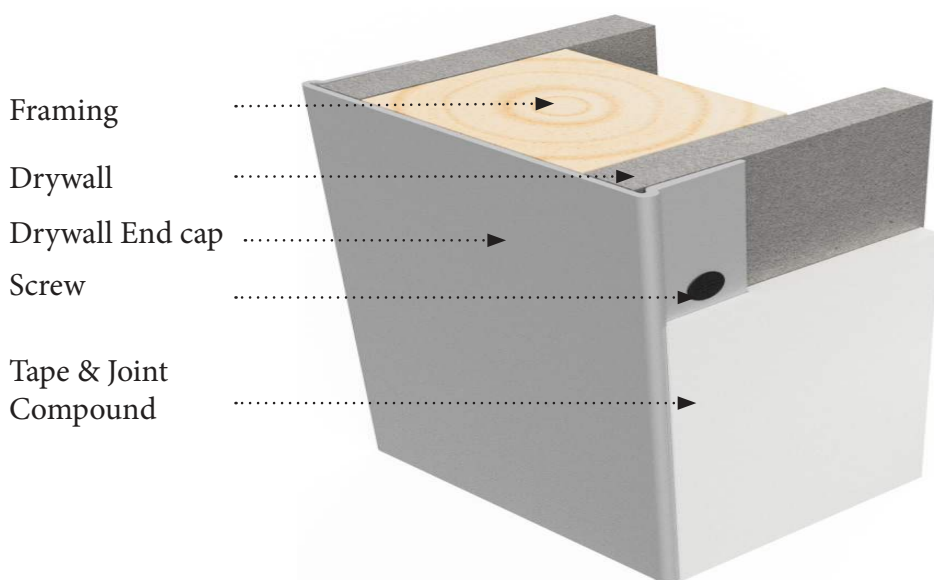
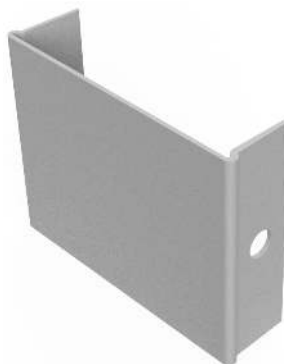
DRYWALL EXTRUSIONS

DRYWALL CORNER ID CHART



ID	DIM A	DIM B	DIM C
DCT 25	1-1/4"	7/8"	2-1/8"

DRYWALL END CAP OVERVIEW



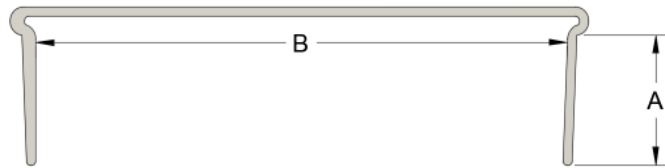
DESCRIPTION

Drywall End Caps with tapered nail flanges. The Drywall End Caps can be installed both vertically and horizontally to create a dramatic look on interior walls. The tapered nailing flanges allow for applying tape and joint compound to create a clean finished edge.

MATERIAL

MATERIAL: 5005 & 5052 Alloy
THICKNESS: Nominal .040 & .063
LENGTH: Standard 10 ft.
FINISH: Clear Anodized aluminum, Paint Grade aluminum, Dark Bronze aluminum and a multitude of pre-painted DuraCoat colors. Special finishes are also available.

DRYWALL END CAP ID CHART



ID	DIM A	DIM B
DEC 350	7/8"	3-1/2"
DEC 375	7/8"	3-3/4"
DEC 4875	7/8"	4-7/8"
DEC 5250	7/8"	5-1/4"
DEC 7250	7/8"	7-1/4"

CUSTOM SIZES AVAILABLE.

DRYWALL END CAP RADIUS/CURVING

Brand X Metals, Inc. has in-house capabilities to curve interior and exterior trims for your job specifications.
Drywall end cap can be curved in all four directions.

TYPE-1



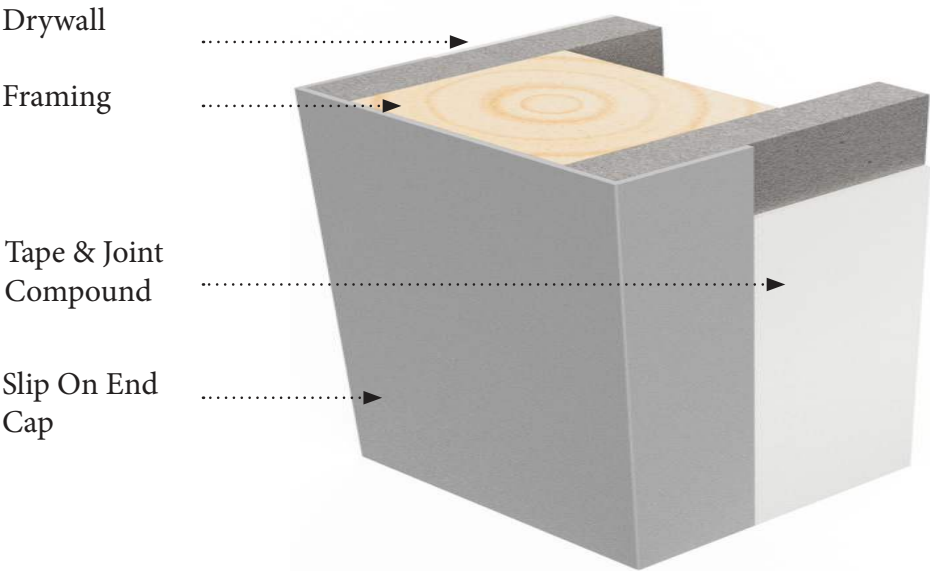
TYPE-2



TYPE-3



DRYWALL SLIP ON END CAP OVERVIEW



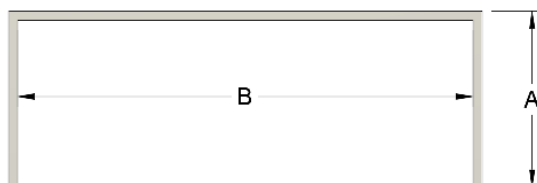
DESCRIPTION

Industry standard Drywall Reveal with tapered nail flanges. The DR trim can be installed both vertically and horizontally to create a dramatic look on interior walls. The tapered nailing flanges allow for applying tape and joint compound to create a clean finished edge.

MATERIAL

MATERIAL: 5005 & 5052 Alloy
 THICKNESS: Nominal .040 & .063
 LENGTH: Standard 10 ft.
 FINISH: Clear Anodized aluminum, Paint Grade aluminum, Dark Bronze aluminum and a multitude of pre-painted DuraCoat colors. Special finishes are also available.

DRYWALL SLIP ON END CAP ID CHART



ID	DIM A	DIM B
SOC 3500	1-1/4"	3-1/2"
SOC 3750	1-1/4"	3-3/4"
SOC 4875	1-1/4"	4-7/8"
SOC 5250	1-1/4"	5-1/4"
SOC 7250	1-1/4"	7-1/4"

CUSTOM SIZES AVAILABLE.

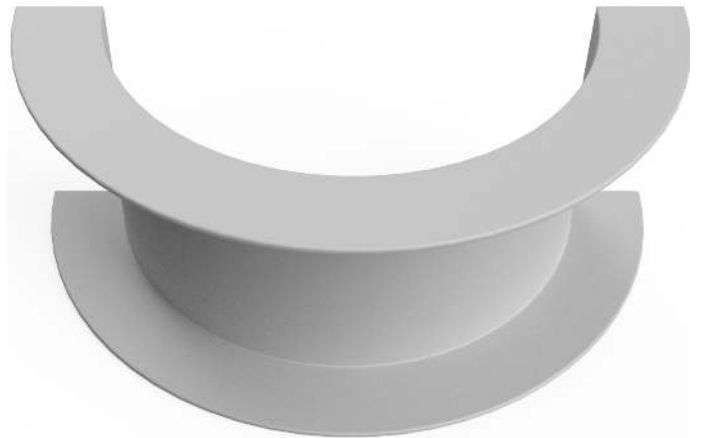
DRYWALL SLIP ON END CAP RADIUS/CURVING

Brand X Metals, Inc. has in-house capabilities to curve interior and exterior trims for your job specifications.
Slip on end cap can be curved in all three directions.

TYPE-1



TYPE-2



TYPE-3

