



**TT-4**

***DIAMOND<>FURR® PATENTED***  
***CONTINUOUS INSULATION***





## CONTENTS

### Interactive PDF Directory

FIELD FURRING STRIP OVERVIEW: DF	4
FIELD FURRING STRIP OVERVIEW: DF	5
PLASTER STOP OVERVIEW: DFS	6
PLASTER STOP ID: DFS	7
WEEP SCREED OVERVIEW: DFW	8
WEEP SCREED ID: DFW	9
STOP CORNER ASSEMBLY OVERVIEW	10
WEEP SCREED CORNER ASSEMBLY OVERVIEW	11
RESIDENTIAL NAIL ON WINDOW OVERVIEW: DFRW	12
RESIDENTIAL NAIL ON WINDOW ID: DFRW	13
RESIDENTIAL NAIL ON WINDOW ASSEMBLY	14
EXPANSION JOINT OVERVIEW: DFXS	16
EXPANSION JOINT ID: DFXS	17
EXPANSION JOINT CORNERS	18



## CONTENTS

# Interactive PDF Directory

WINDOW SURROUND OVERVIEW: DFWS	20
WINDOW SURROUND ID OVERVIEW: DFWS	21
WINDOW SURROUND ASSEMBLY OVERVIEW	22
WINDOW SURROUND HEADER OVERVIEW: DFWSD	24
WINDOW SURROUND HEADER ID CHART: DFWSD	25
DRIP EDGE OVERVIEW: DFWD	26
DRIP EDGE ID CHART: DFWD	27
DRIP EDGE AND PLASTER STOP CORNERS	28
#19 DRIP EDGE MOLDING OVERVIEW: DF#19	30
#19 DRIP EDGE MOLDING ID CHART: DF#19	31
DRIP EDGE CORNERS: DF#19 CORNERS	32



FIELD FURRING STRIP OVERVIEW: DF



DESCRIPTION

Diamond-Furr Furring Strips have a patented design that offers the first real solution to the moisture intrusion problems that have plagued the plastering industry for decades.

The 18 gauge Furring Strips (pt # DF-375) are designed for polyiso & standard 3-coat plaster. They are installed over the polyiso insulation, weather barrier or directly to the substrate when liquid applied air / water barriers are used. The Strips are attached to vertical framing members every 16” using wafer-head screws and the metal lath is then secured to the Furring Strips using 18ga tie wire through the provided attachment holes.

The result is a flexible connection which reduces cracking and effectively eliminates over 55% of the fastener penetrations through the weather barrier in the field and 100% elimination when a liquid barrier is applied! Diamond-Furr trims also provide uninterrupted 3/8” furring for superior lath embedment and completely remove the potential for torn weather barriers due to over tightened screws. For warranty purposes, please refrain from using spray foam with this system.

Diamond-Furr Strips works in conjunction with our patented Diamond-Furr Termination Trims which eliminate 100% of the fastener penetrations through the moisture barrier around critical areas such as doors and windows.

We recommend using the complete Diamond-Furr System for the greatest available protection against moisture intrusion and a significant reduction in liability exposure. Diamond-Furr is also available with a longer ground size to comply with the needs of the new energy code requirements.

MATERIAL

MATERIAL: Galvanized Steel G90

THICKNESS: 18 GA

LENGTH: Standard 10 ft.

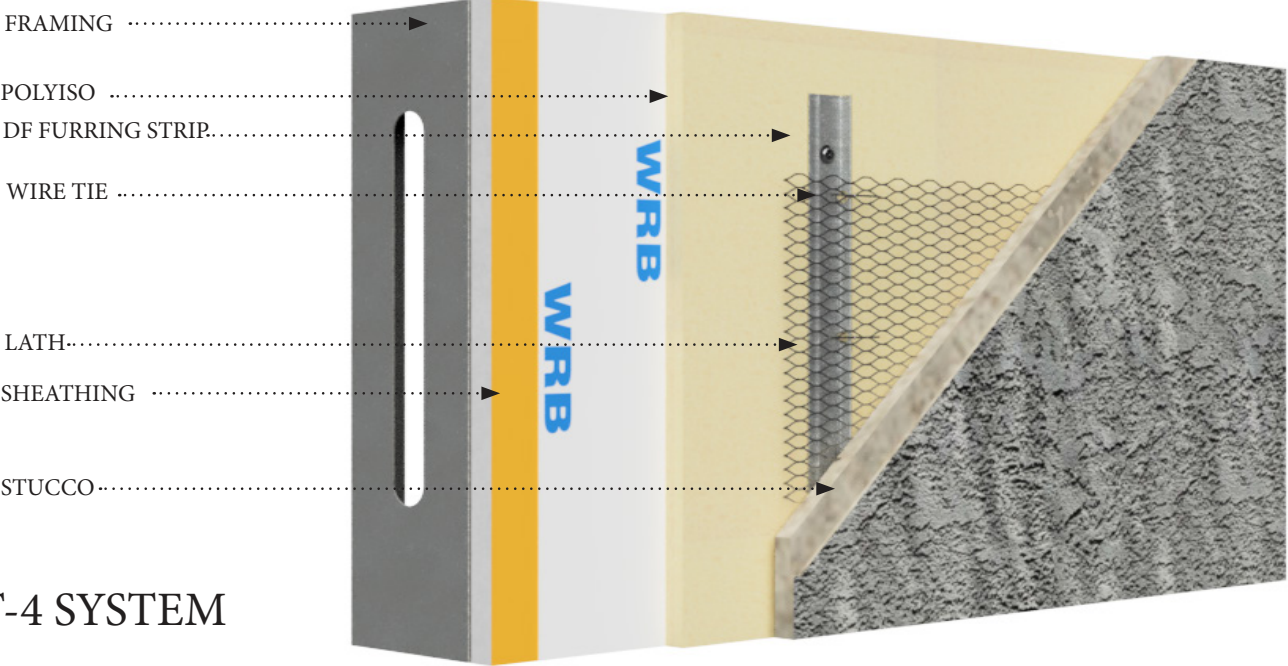
STANDARD SPECIFICATION

ASTM A653

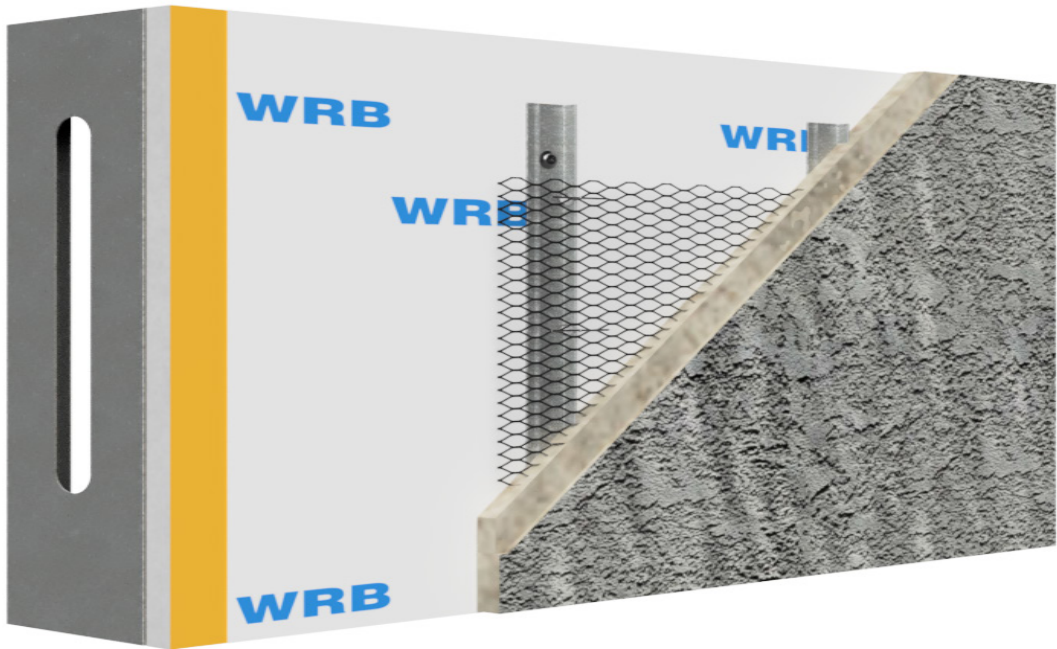
ASTM C1063

ASTM C926

ASTM C1861



TT-4 SYSTEM

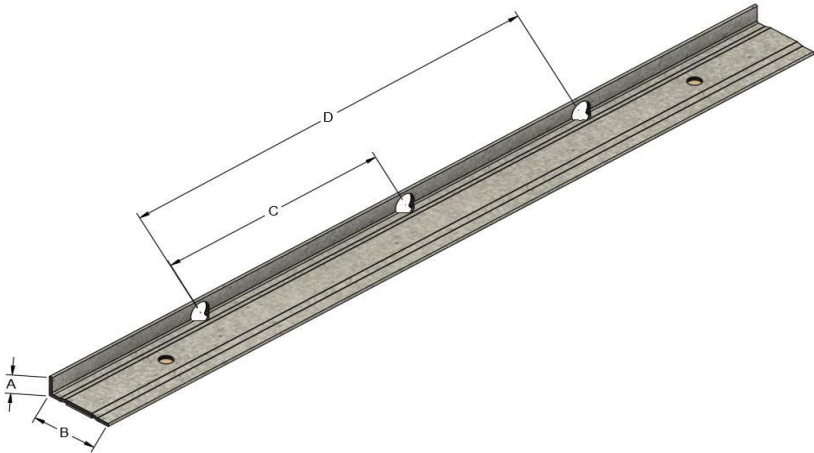


CONVENTIONAL SYSTEM





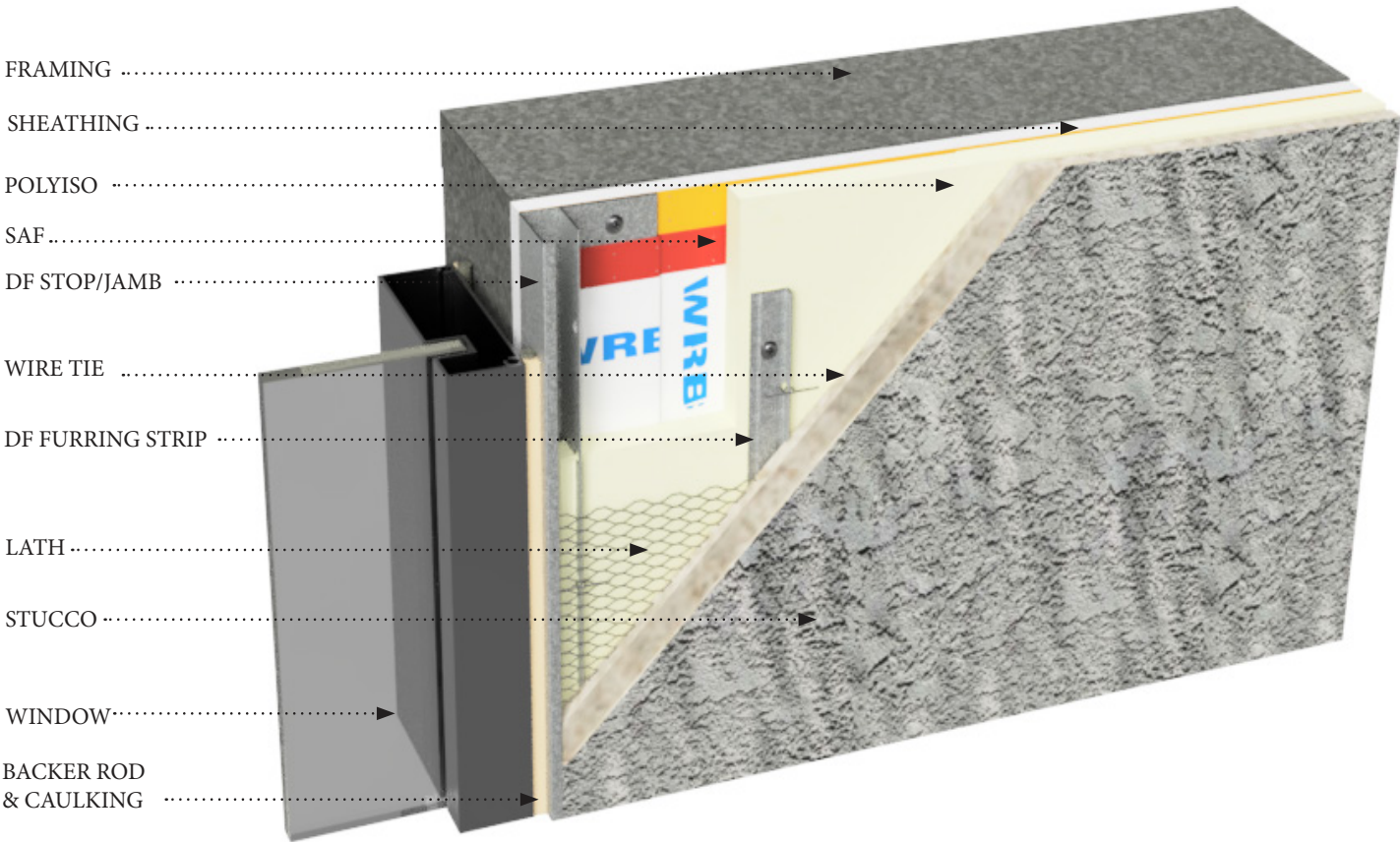
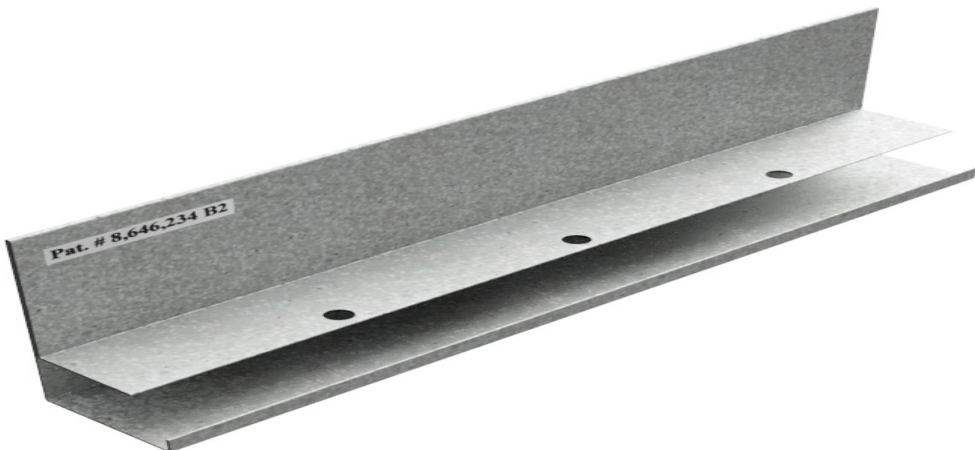
FIELD FURRING STRIP OVERVIEW: DF



ID	DIM A	DIM B	DIM C	DIM D
DF-375	5/16"	1"	3-1/4"	16"



PLASTER STOP OVERVIEW: DFS



DESCRIPTION

The Diamond-Furr Termination Trims for Continuous Insulation (CI) Systems are designed specifically for projects using 3-coat plaster over rigid insulation in compliance with the new energy code criteria. Diamond-Furr termination trims eliminate 100% of the fastener penetrations through the WRB around critical opening such as windows and doors while providing an uninterrupted 3/8” furring for superior lath embedment.

The C.I. System Plaster Stop (pt # DFS-1375) is designed to be used at termination points such as doors and windows just like a conventional J-mold. The Diamond-Furr Plaster Stop has a built-in furring strip which extends 3/8” beyond the rigid insulation. This strip creates an uninterrupted 3/8” furring as well as a flexible connection point for metal lath. The Lath is secured using tie wire through the provided attachment holes and finished with a butterfly tie. Diamond-Furr Termination Trims effectively eliminate 100% of the fastener penetrations through the WRB at these critical points.

The Diamond-Furr Plaster Stop works in conjunction with the Diamond-Furr C.I. System Furring Strips which eliminate 55% penetrations through the moisture barrier in the field. We recommend using the complete Diamond-Furr C.I. System for the best possible protection against moisture intrusion, superior lath embedment, minimized thermal bridging and significantly reduced exposure to moisture intrusion liability.

For warranty purposes, please refrain from using spray foam with this system.

MATERIAL

MATERIAL: Galvanized Steel G90

THICKNESS: 22 GA

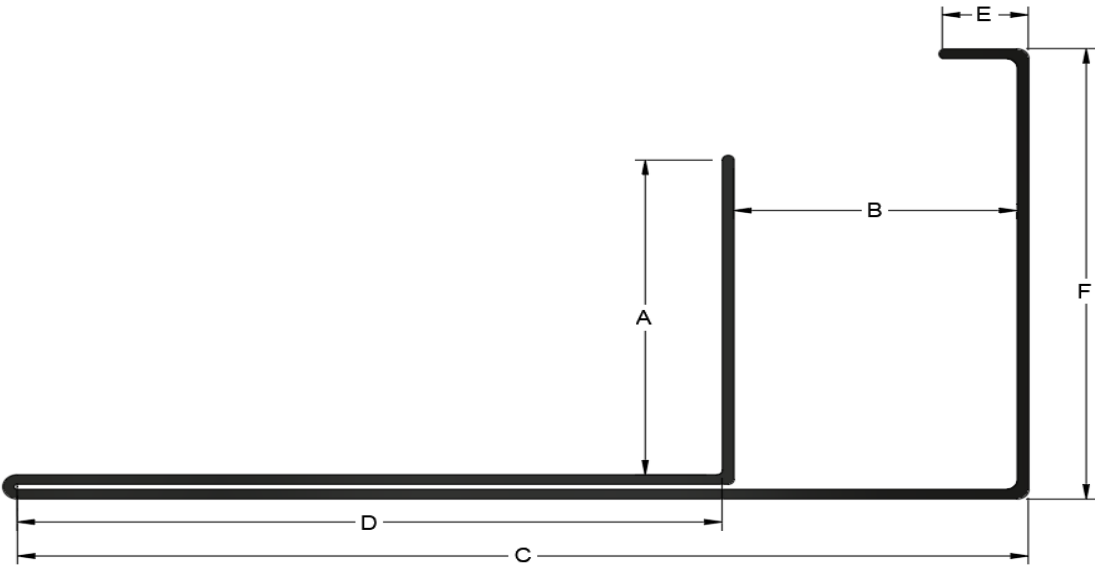
LENGTH: Standard 10 ft.

STANDARD SPECIFICATION

- ASTM A653
- ASTM C1063
- ASTM C926
- ASTM C1861



PLASTER STOP ID: DFS



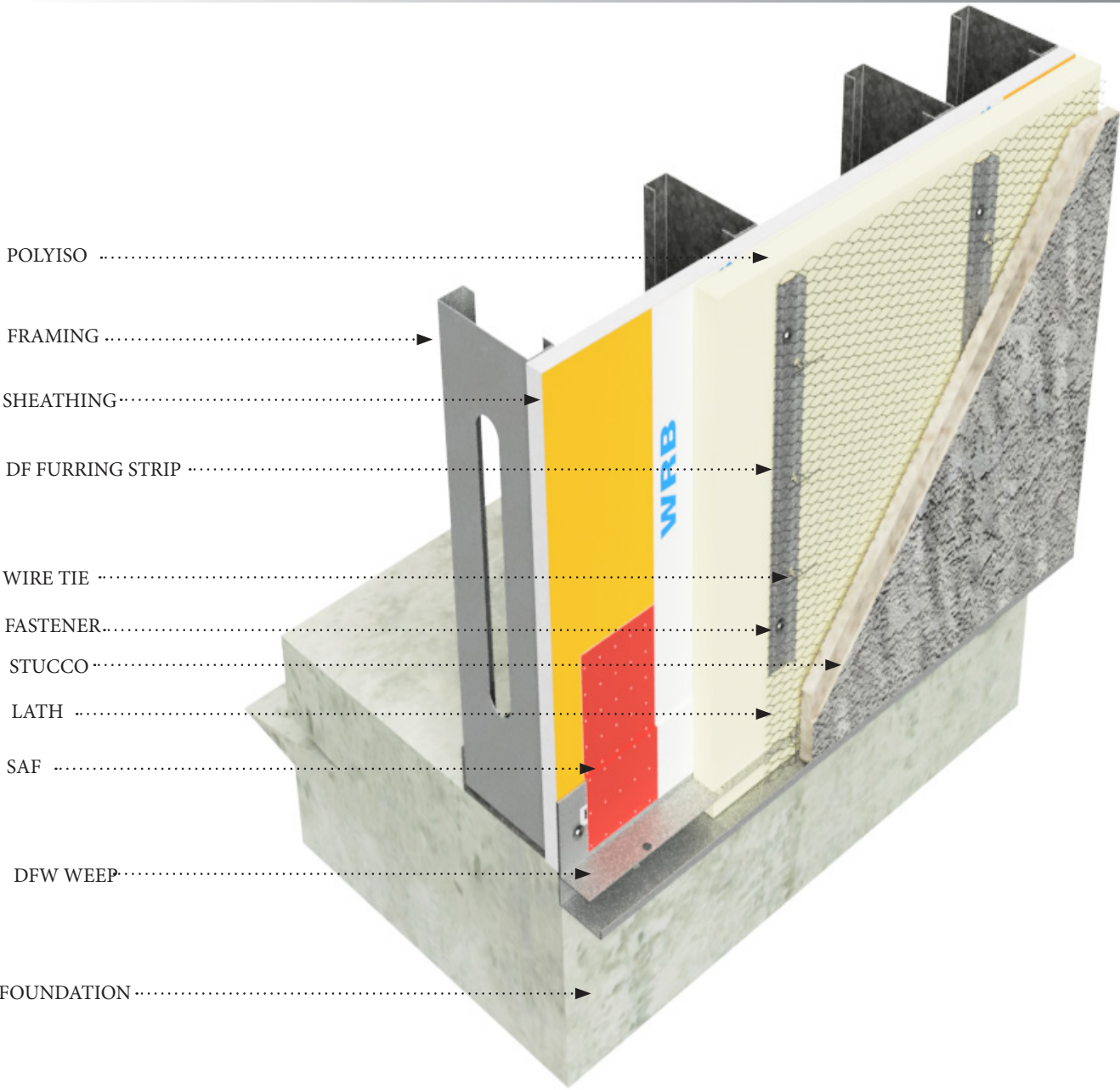
# J STOP

ID	POLYISO	A	B	C	D	E	F
DFS-1375	1"	1-3/8"	1"	3-1/2"	2-1/2"	1/4"	1-7/8"
DFS-15375	1-1/2"	1-7/8"	1"	3-1/2"	2-1/2"	1/4"	2-3/8"
DFS-2375	2"	2-3/8"	1"	3-1/2"	2-1/2"	1/4"	2-7/8"
DFS-3375	3"	3-3/8"	1"	3-1/2"	2-1/2"	1/4"	3-7/8"





WEEP SCREED OVERVIEW: DFW



DESCRIPTION

The Diamond-Furr Termination Trims for Continuous Insulation (CI) Systems are designed specifically for projects using 3-coat plaster over rigid insulation in compliance with the new energy code criteria. Diamond-Furr termination trims eliminate 100% of the fastener penetrations through the WRB around critical opening such as windows and doors while providing an uninterrupted 3/8” furring for superior lath embedment.

The C.I. System Plaster Stop (pt # DFW-1375) is designed to be used at the base foundation of the wall same as a conventional weep screed. The Diamond-Furr Plaster j weep screed has a built-in furring strip which extends 3/8” beyond the rigid insulation. This strip creates an uninterrupted 3/8” furring as well as a flexible connection point for metal lath. The Lath is secured using tie wire through the provided attachment holes and finished with a butterfly tie. Diamond-Furr Termination Trims effectively eliminate 100% of the fastener penetrations through the WRB at these critical points.

The Diamond-Furr Plaster Stop works in conjunction with the Diamond-Furr C.I. System Furring Strips which eliminate 55% penetrations through the moisture barrier in the field. We recommend using the complete Diamond-Furr C.I. System for the best possible protection against moisture intrusion, superior lath embedment, minimized thermal bridging and significantly reduced exposure to moisture intrusion liability.

For warranty purposes, please refrain from using spray foam with this system.

MATERIAL

MATERIAL: Galvanized Steel G90  
THICKNESS: 22 GA  
LENGTH: Standard 10 ft.

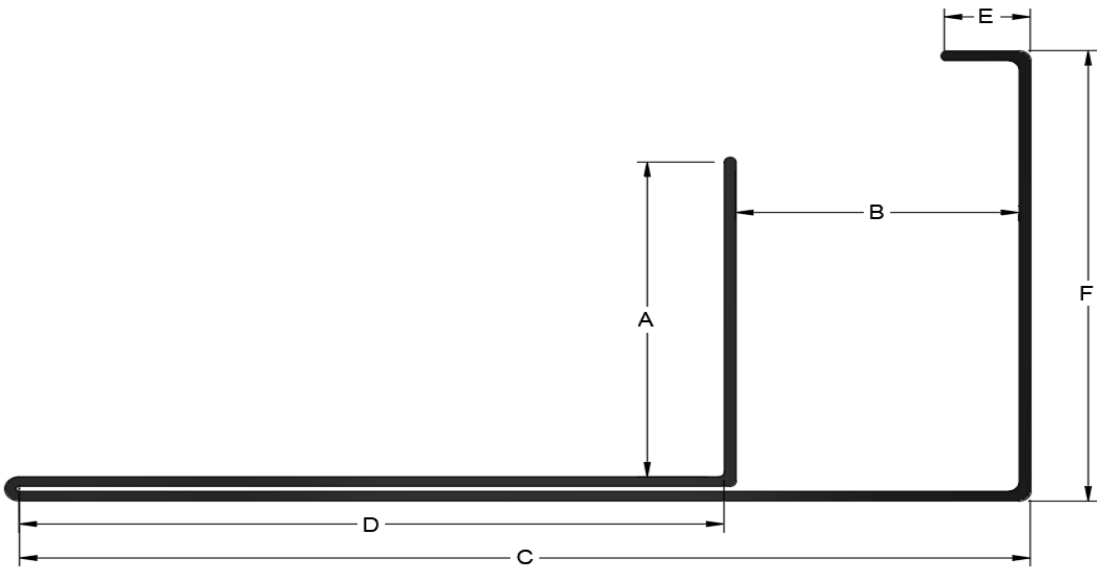
STANDARD SPECIFICATION

ASTM A653  
ASTM C1063  
ASTM C926  
ASTM C1861





WEEP SCREED ID: DFW



# J WEEP SCREED

ID	POLYISO	A	B	C	D	E	F
DFW-1375	1"	1-3/8"	1"	3-1/2"	2-1/2"	1/4"	1-7/8"
DFW-15375	1-1/2"	1-7/8"	1"	3-1/2"	2-1/2"	1/4"	2-3/8"
DFW-2375	2"	2-3/8"	1"	3-1/2"	2-1/2"	1/4"	2-7/8"
DFW-3375	3"	3-3/8"	1"	3-1/2"	2-1/2"	1/4"	3-7/8"

## STOP CORNER ASSEMBLY OVERVIEW

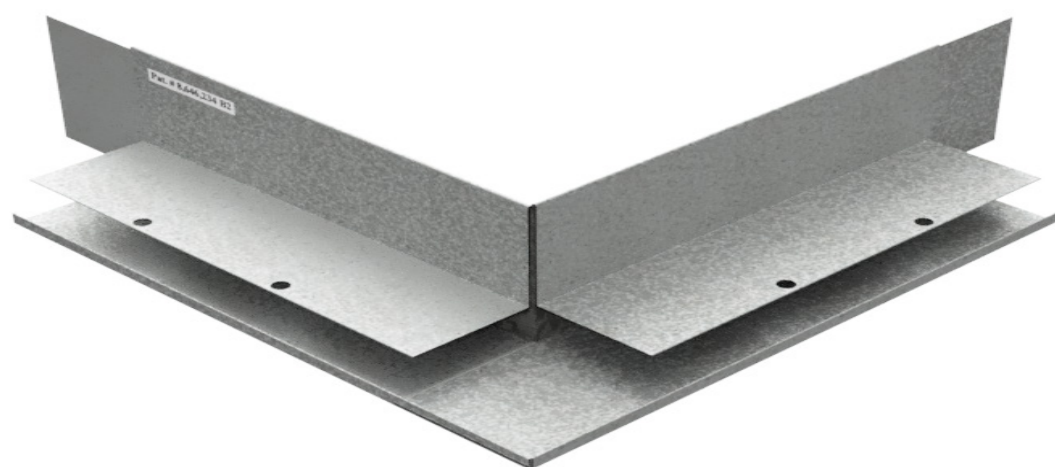
Inside & outside corners are field miter cut & then fitted together with provided splicing plates.

Polyurethane or silicone caulking must be used where corners splice together & all butt joints.

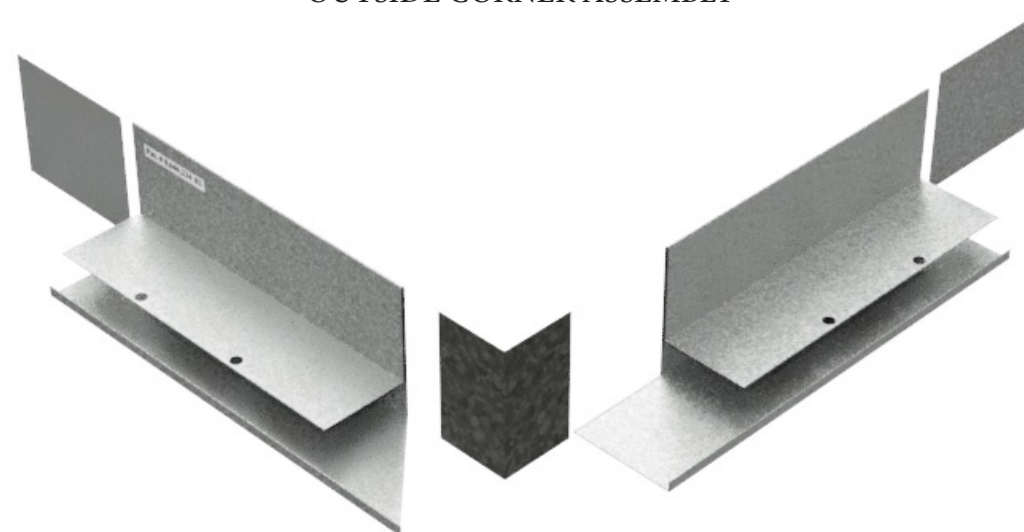
Field-cut precise miters on inside and outside corners lock seamlessly with the included 26 Ga galvanized clips for a smooth, unified look. Fabrication clips make installation a breeze, ensuring perfect corners every time.

Splicing clips and L angle connection clips are provided.

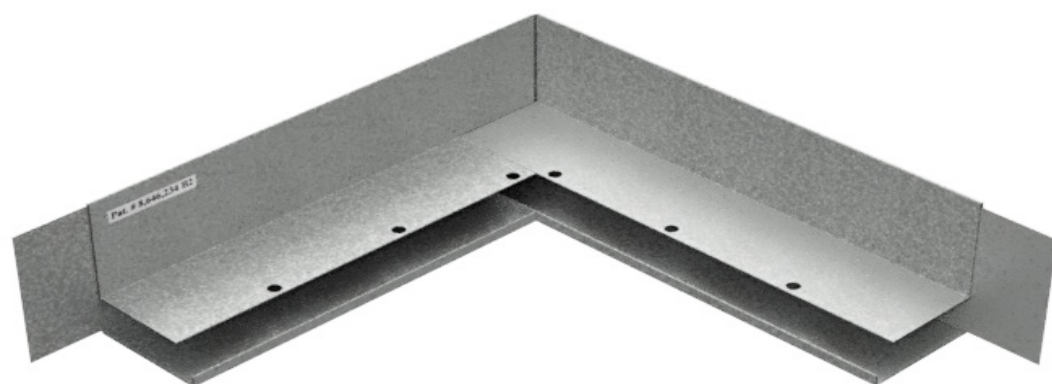
OUTSIDE CORNER COMPLETE



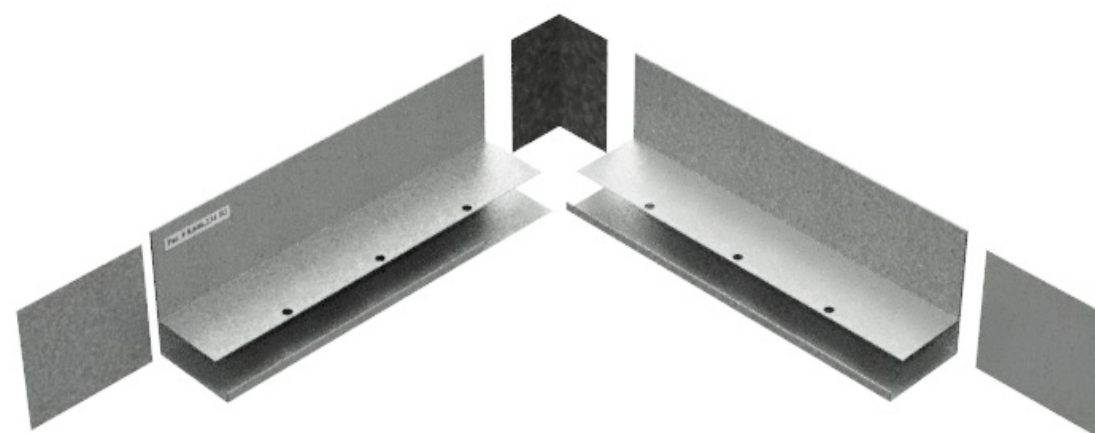
OUTSIDE CORNER ASSEMBLY



INSIDE CORNER COMPLETE



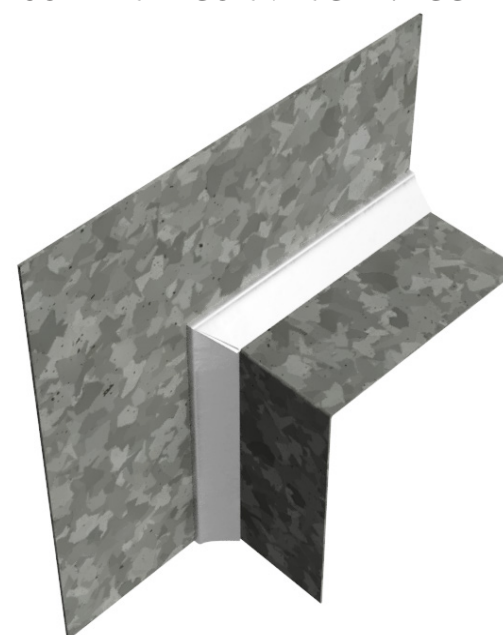
INSIDE CORNER ASSEMBLY



L-ANGLE CORNER



SOLDERED CORNER CLIP: PCC





## WEEP SCREED CORNER ASSEMBLY OVERVIEW

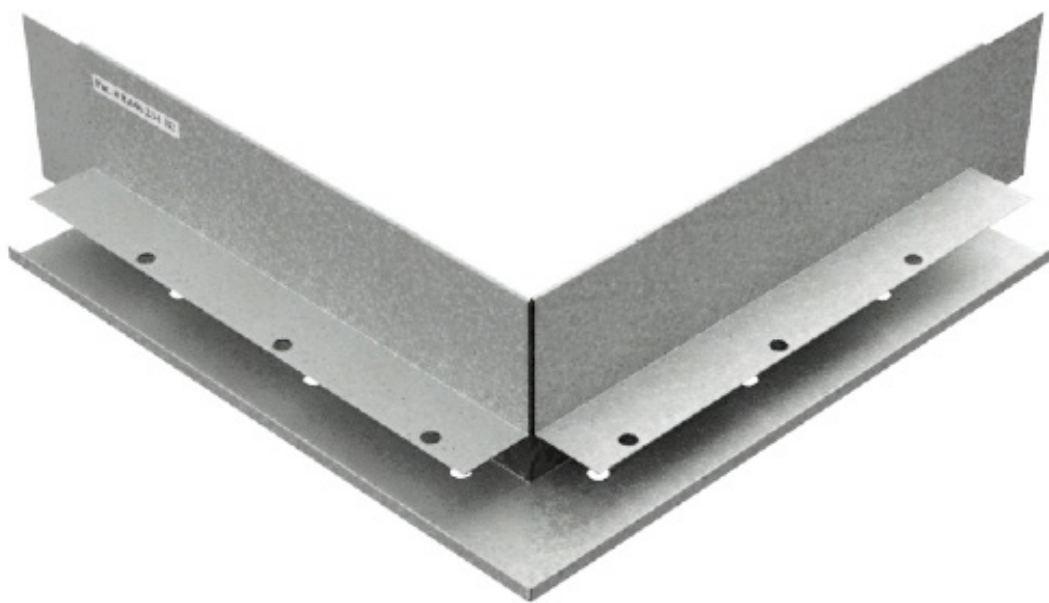
Inside and outside corners are field miter cut and then fitted together with provided splicing plates.

Polyurethane or silicone caulking must be used where corners splice together & all butt joints.

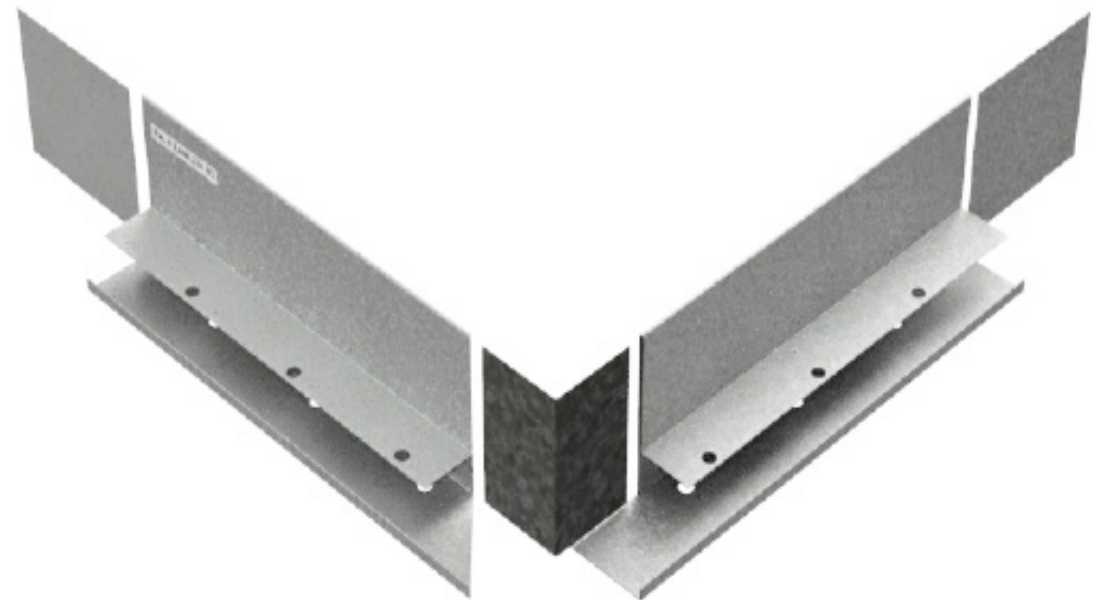
Field-cut precise miters on inside and outside corners lock seamlessly with the included 26 Ga galvanized clips for a smooth, unified look. Fabrication clips make installation a breeze, ensuring perfect corners every time.

Splicing clips and L angle connection clips are provided.

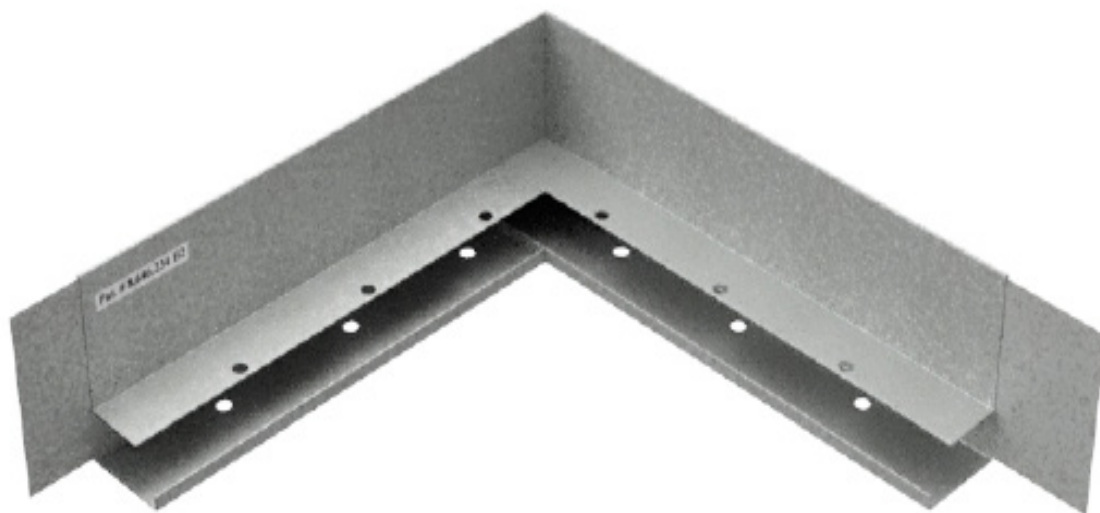
OUTSIDE CORNER COMPLETE



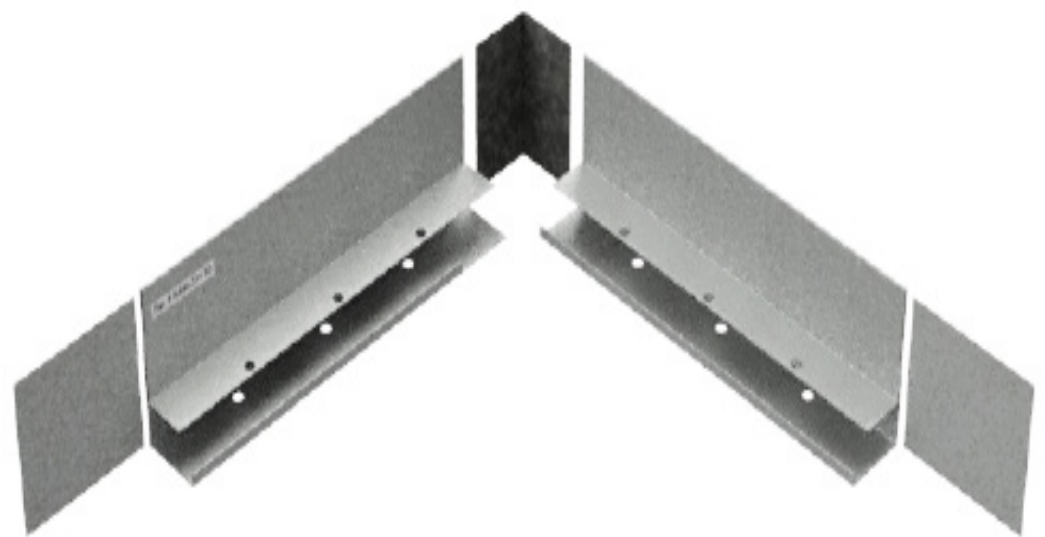
OUTSIDE CORNER ASSEMBLY



INSIDE CORNER COMPLETE

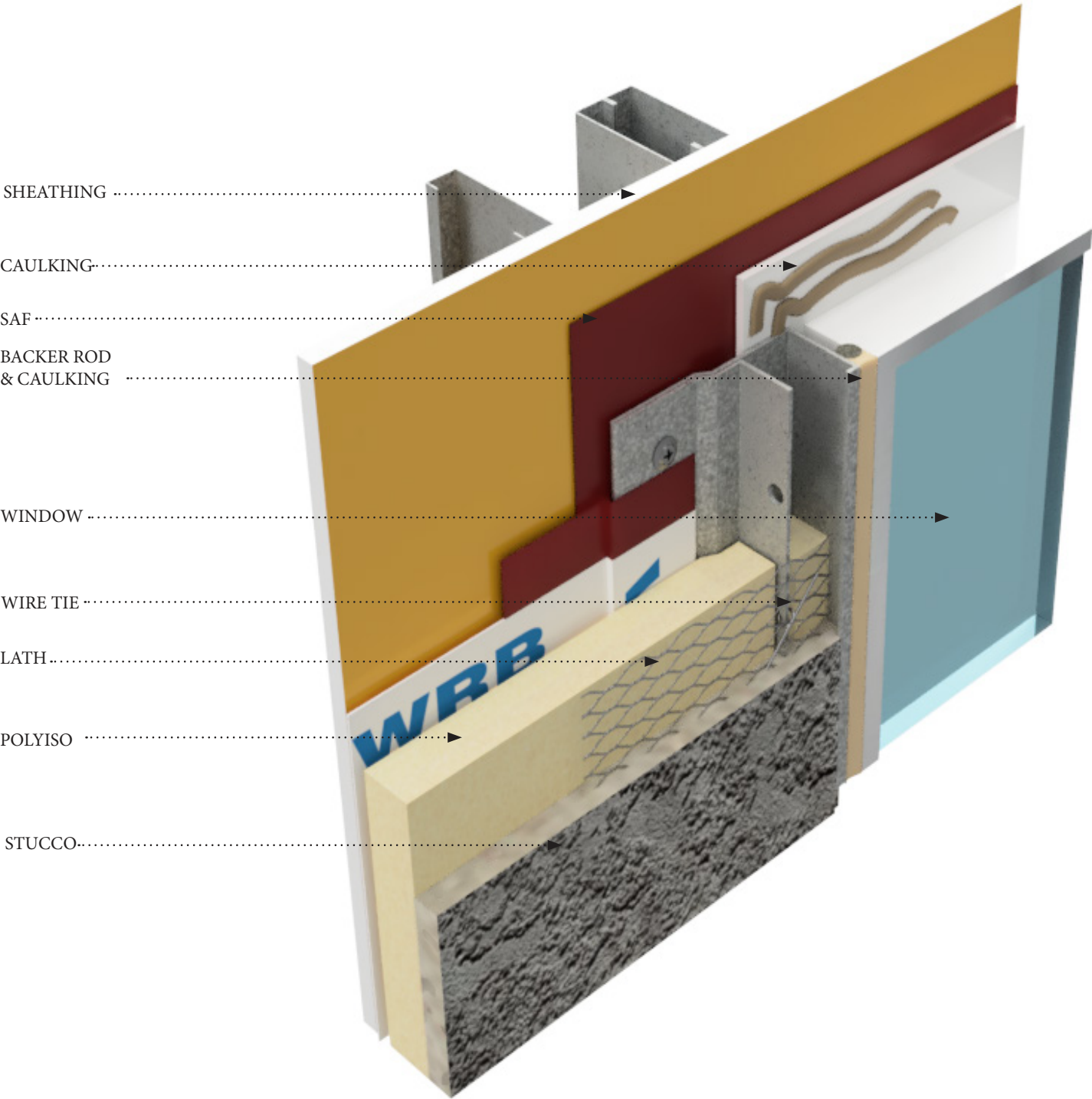
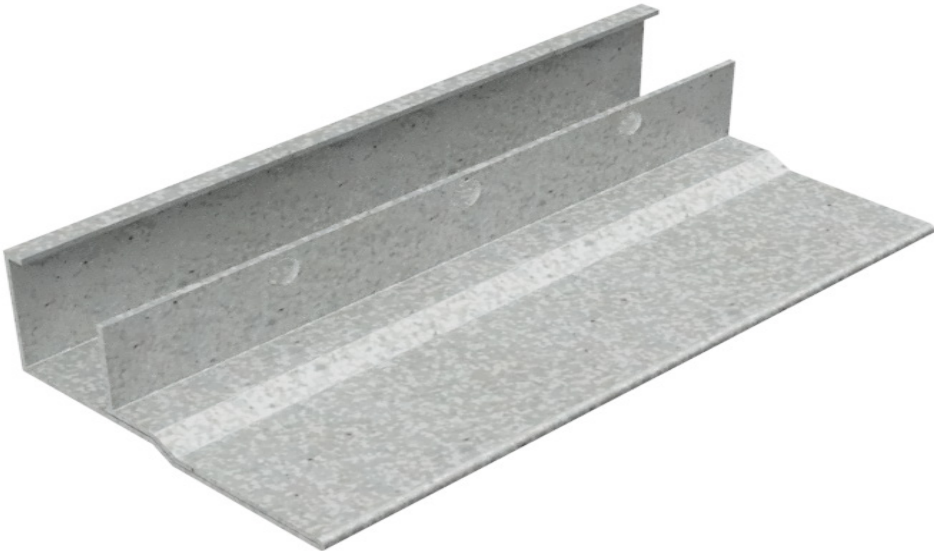


INSIDE CORNER ASSEMBLY





RESIDENTIAL NAIL ON WINDOW OVERVIEW: DFRW



DESCRIPTION

The Diamond-Furr Termination Trims for Continuous Insulation (CI) Systems are designed specifically to meet the requirements of the new energy codes when using 3-coat plaster over continuous rigid insulation. Diamond-Furr trims eliminate 100% of the fastener penetrations through the WRB around critical opening such as windows and doors while providing an uninterrupted 3/8” furring for a superior scratch coat.

The CI System Residential Nail On Window (pt # DFR) is intended to be installed around windows manufactured with a plaster depth ground incorporated in the window design. Our patented design provides pre-tensioned metal flashing over the nailing flange of the windows and is a plaster stop. There is a built-in furring strip which extends 3/8” above the rigid insulation. The furring strip allows for a flexible connection point for metal lath which is secured using tie wire and a butterfly tie. This method of attachment effectively eliminates 100% of the fastener penetrations through the moisture barrier in this critical area.

Our Residential Window Flashing works in conjunction with the Diamond-Furr CI System Field Furring Strips which reduce field penetrations by 55%. We recommend using the complete Diamond-Furr System for the best possible protection against moisture intrusion, superior lath embedment, minimal thermal bridging and significantly reduced exposure to moisture intrusion responsibility.

For warranty purposes, please refrain from using spray foam with this system.

MATERIAL

MATERIAL: Galvanized Steel G90  
THICKNESS: 22 GA  
LENGTH: Standard 10 ft.

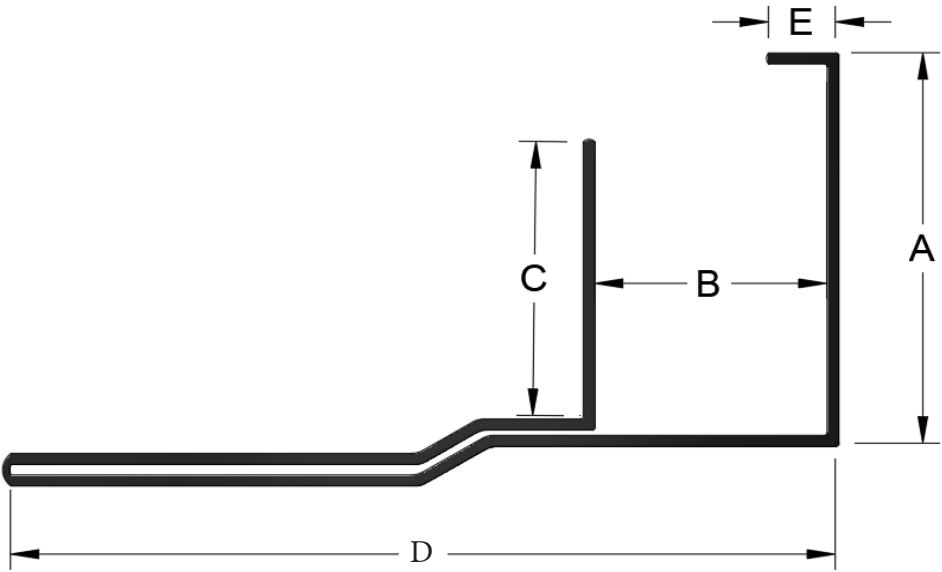
STANDARD SPECIFICATION

ASTM A653  
ASTM C1063  
ASTM C926  
ASTM C1861





RESIDENTIAL NAIL ON WINDOW ID: DFRW



ID	POLYISO	DIM A	DIM B	DIM C	DIM D	DIM E
DFRW-1375	1"	1-7/8"	1"	1-3/8"	3-1/2"	1/4"
DFRW-15375	1-1/2"	2-3/8"	1"	1-7/8"	3-1/2"	1/4"
DFRW-2375	2"	2-7/8"	1"	2-3/8"	3-1/2"	1/4"
DFRW-3375	3"	3-7/8"	1"	3-3/8"	3-1/2"	1/4"

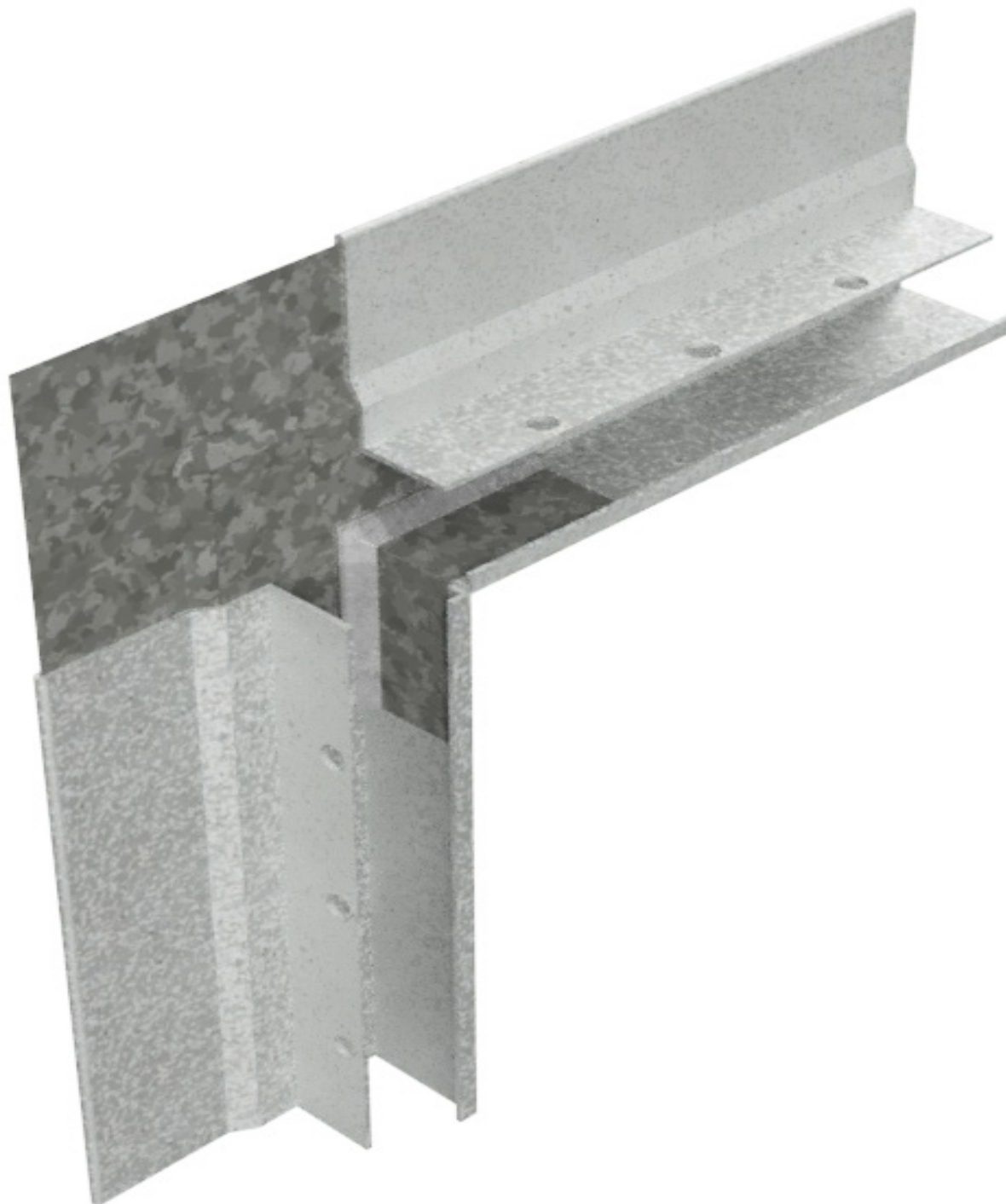
## RESIDENTIAL NAIL ON WINDOW ASSEMBLY

SOLDERED NAIL ON RESIDENTIAL WINDOW corners are field miter cut & then fitted together with provided splicing plates.

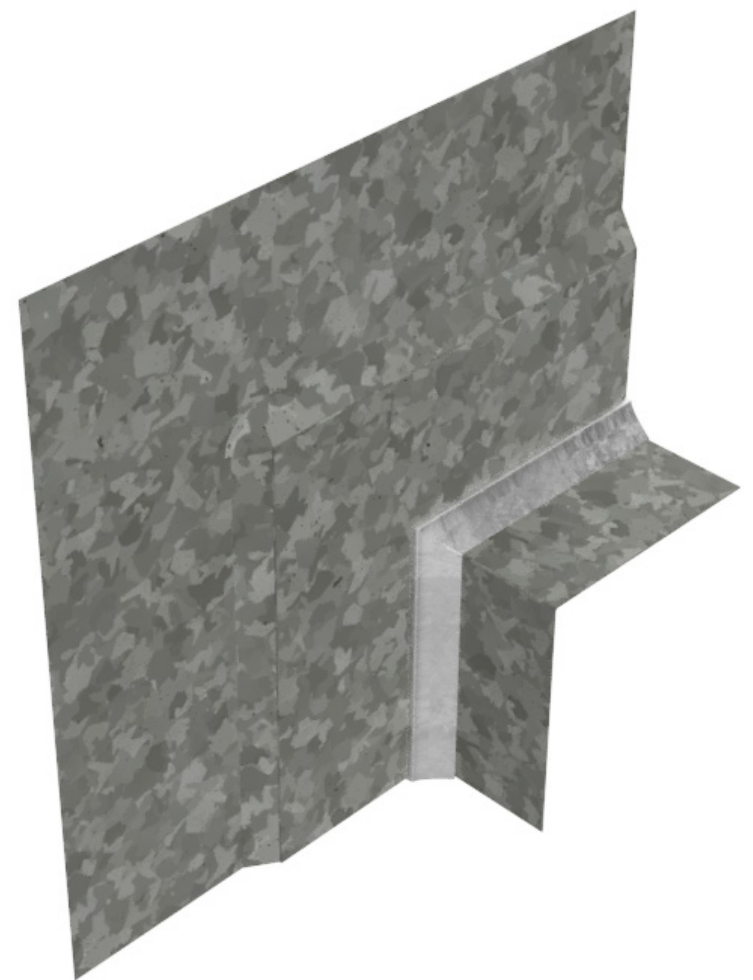
Polyurethane or silicone caulking must be used where corners splice together & all butt joints.

Field-cut precise miters on inside and outside corners lock seamlessly with the included 26 Ga galvanized clips for a smooth, unified look. Fabrication clips make installation a breeze, ensuring perfect corners every time.

SOLDERED NAIL ON RESIDENTIAL WINDOW



SOLDERED NAIL ON RESIDENTIAL WINDOW CLIP: PCCRW





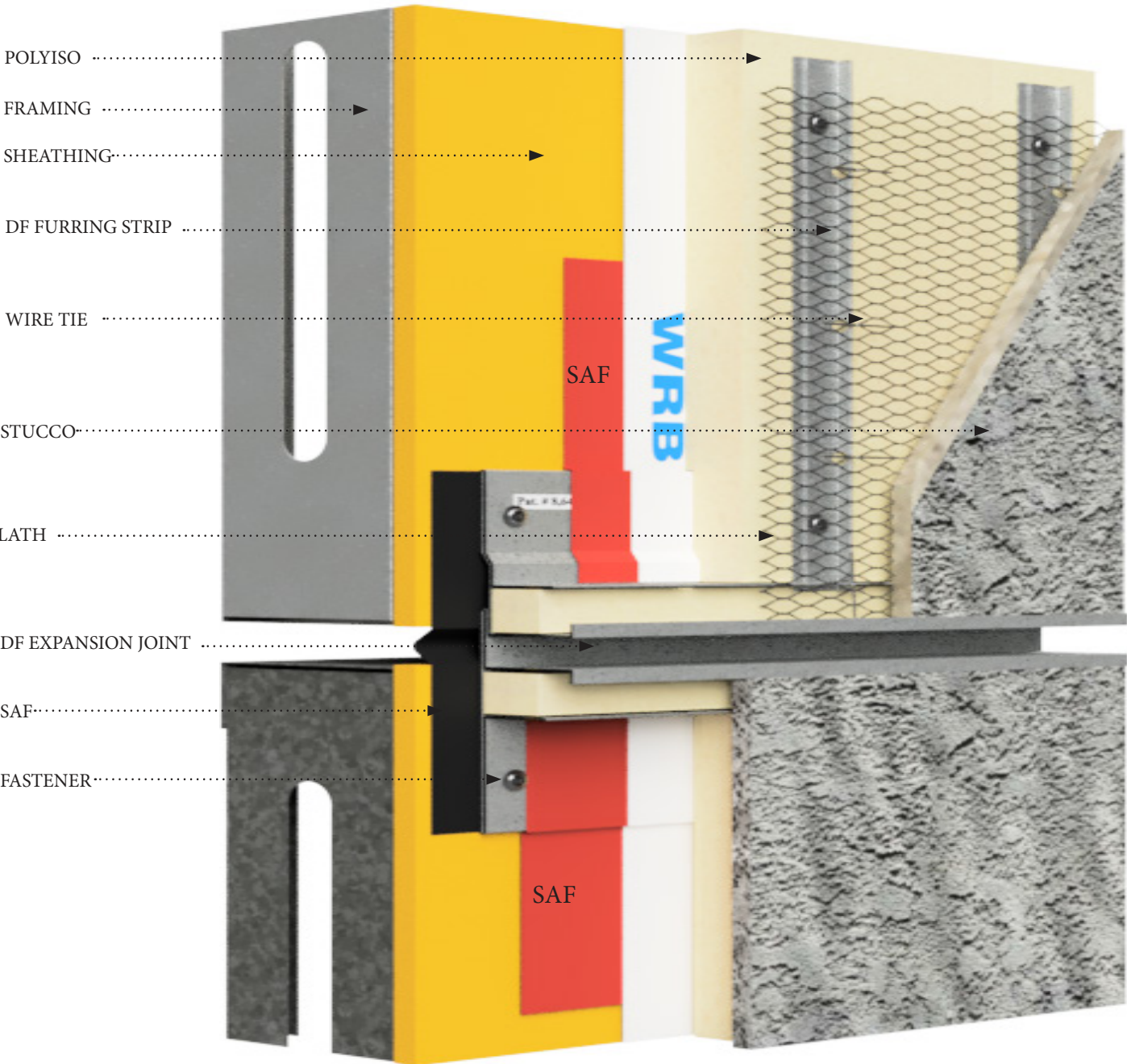
DIAMOND<>FURR<sup>®</sup> PATENTED



BLANK FOR PRINTING PURPOSES



EXPANSION JOINT OVERVIEW: DFXS



DESCRIPTION

The Diamond-Furr Termination Trims for Continuous Insulation (CI) Systems are designed specifically for projects using 3-coat plaster over rigid insulation in compliance with the new energy code criteria. Diamond-Furr’s Expansion Joint trims eliminate 100% of the fastener penetrations through the WRB while providing an uninterrupted 3/8” furring for superior lath embedment.

The Diamond-Furr Expansion Joint (pt # DFXS-1375) is designed to be installed at the floor lines like conventional expansion joints. It has a built-in furring strip which extends 3/8” beyond the rigid insulation and creates an uninterrupted 3/8” furring as well as a flexible connection point for metal lath. The Lath is secured using tie wire through the provided attachment holes and finished with a butterfly tie. The Diamond-Furr Expansion Joint trim effectively eliminates 100% of the fastener penetrations through the WRB.

The Diamond-Furr Expansion Joint works in conjunction with the Diamond-Furr C.I. System Furring Strips which eliminate 55% penetrations through the moisture barrier in the field. We recommend using the complete Diamond-Furr C.I. System for the best possible protection against moisture intrusion, superior lath embedment, minimized thermal bridging and significantly reduced exposure to moisture intrusion liability.

For warranty purposes, please refrain from using spray foam with this system.

MATERIAL

MATERIAL: Galvanized Steel G90  
THICKNESS: 20 GA  
LENGTH: Standard 10 ft.

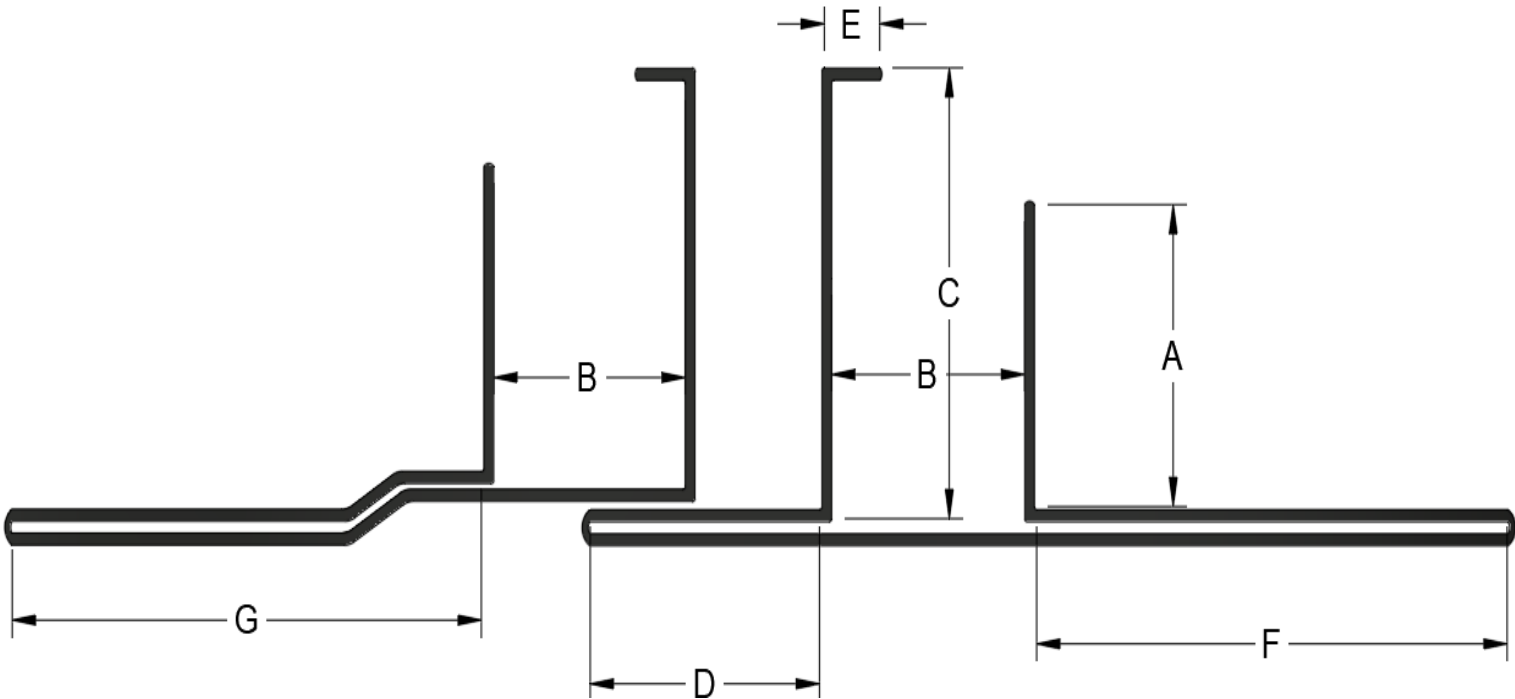
STANDARD SPECIFICATION

ASTM A653  
ASTM C1063  
ASTM C926  
ASTM C1861





EXPANSION JOINT ID: DFXS



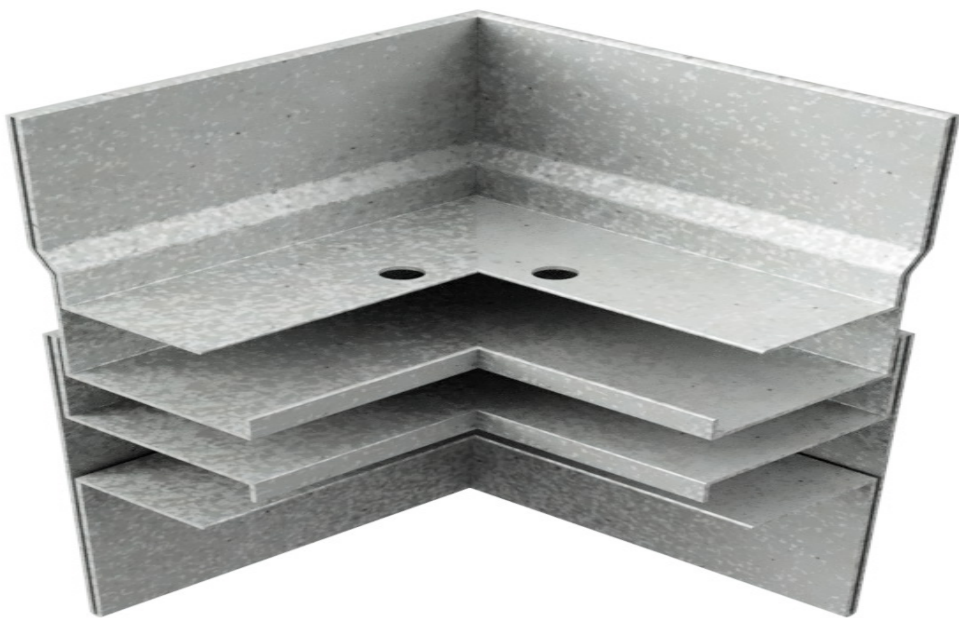
EXPANSION JOINT PART A

ID	POLYISO	A	B	C	D	E	F	G
DFXS-1375	1"	1-3/8"	1"	1-7/8"	1-3/4"	1/4"	2-1/2"	2-1/2"
DFXS-15375	1-1/2"	1-7/8"	1"	2-3/8"	1-3/4"	1/4"	2-1/2"	2-1/2"
DFXS-2375	2"	2-3/8"	1"	2-7/8"	1-3/4"	1/4"	2-1/2"	2-1/2"
DFXS-3375	3"	3-3/8"	1"	3-7/8"	1-3/4"	1/4"	2-1/2"	2-1/2"

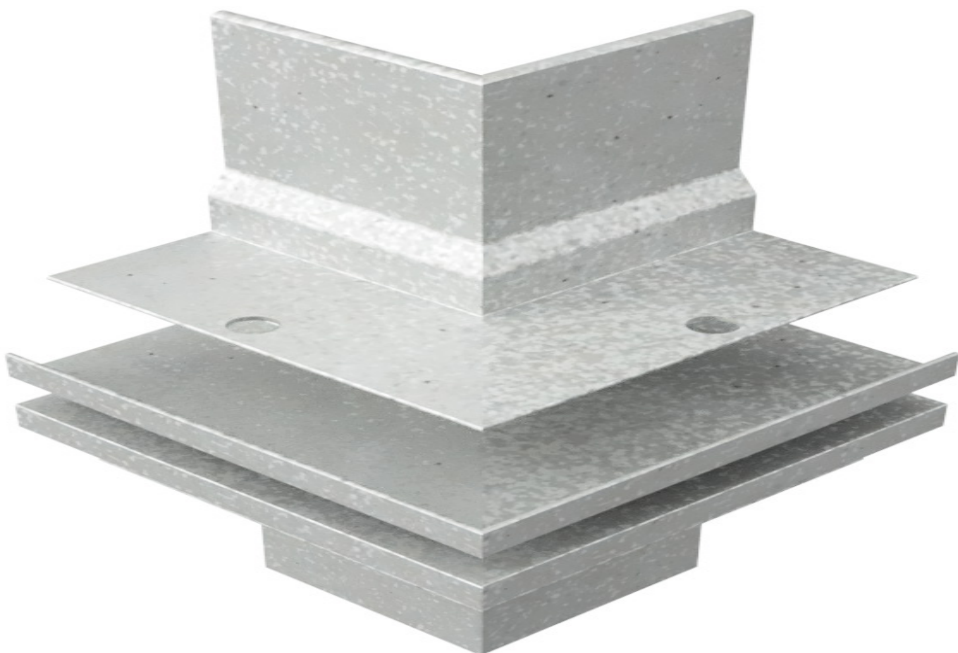
EXPANSION JOINT CORNERS

Say goodbye to unsightly corner gaps! Achieve professional-looking results with precise miter cuts on both inside and outside corners. These cuts are then reinforced with heavy-duty 26 Ga galvanized clips, ensuring a smooth, unified appearance and lasting strength. Plus, for a hassle-free installation experience, fabrication clips are included, making the process quick and easy. The end result? Crisp, clean corners that elevate the look of your entire project. Polyurethane or silicone caulking must be used where corners splice together & all butt joints. Splicing clips and L angle connection clips are provided.

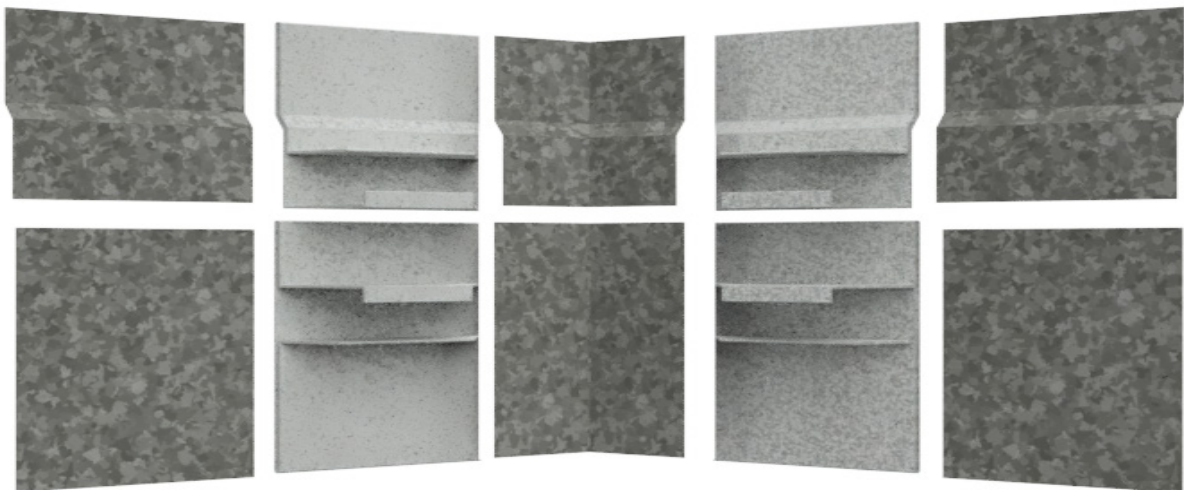
INSIDE CORNER PART A & B



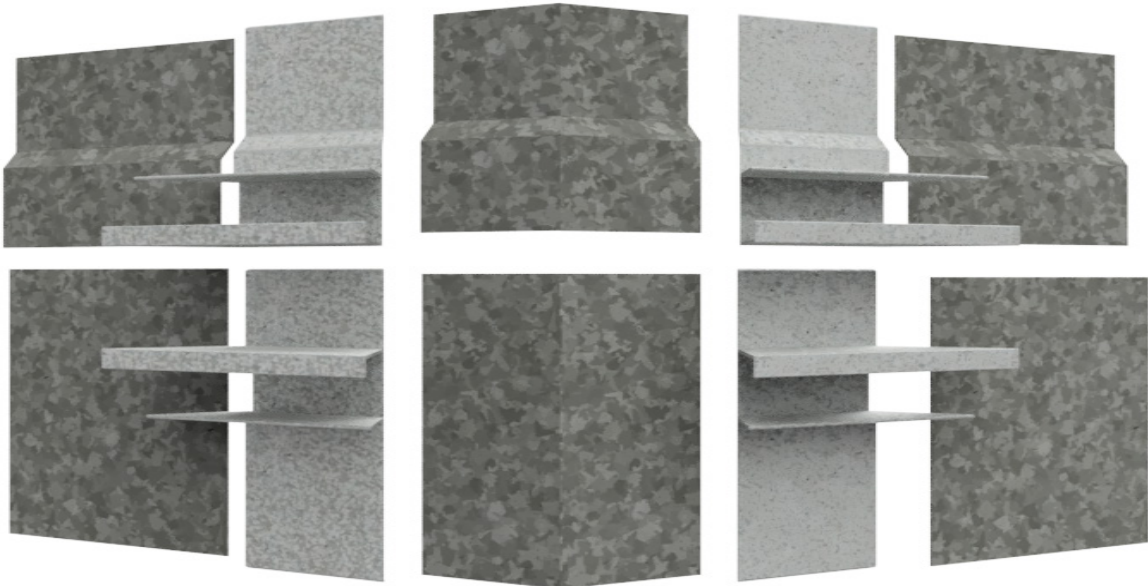
OUTSIDE CORNER PART A & B



INSIDE CORNER PART A & B  
SPLICE CLIPS & CORNER SPLICE CLIPS



OUTSIDE CORNER PART A & B  
SPLICE CLIPS & CORNER SPLICE CLIPS





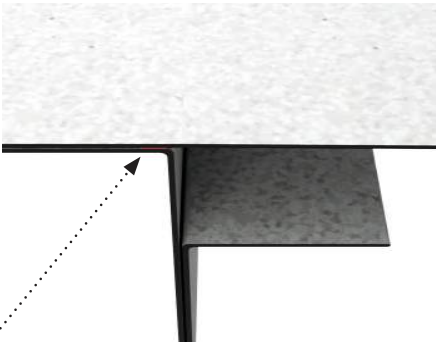
DIAMOND<>FURR<sup>®</sup> PATENTED



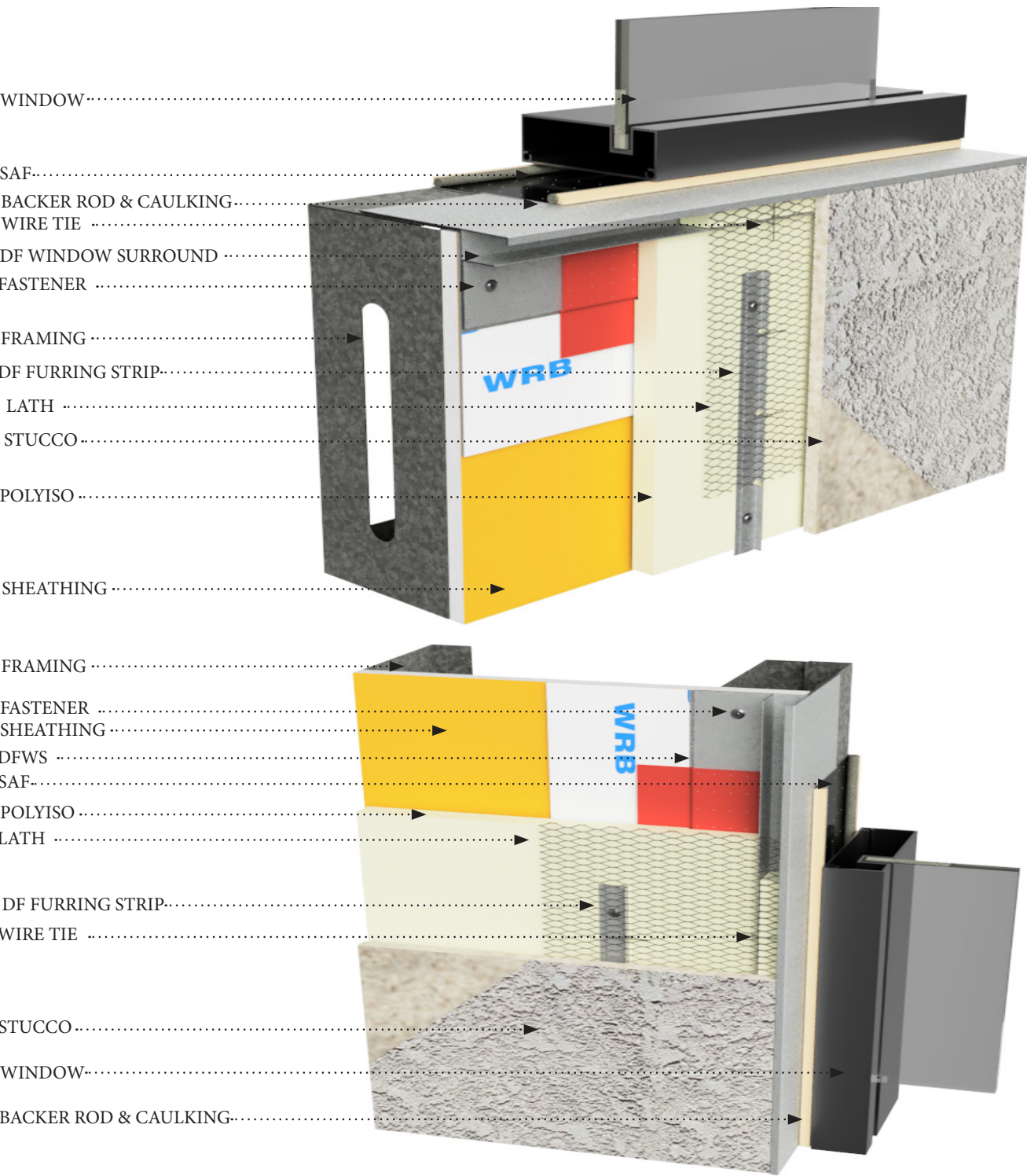
BLANK FOR PRINTING PURPOSES



WINDOW SURROUND OVERVIEW: DFWS



Double sided structural tape is added to the product for extra moisture protection.



DESCRIPTION

The Diamond-Furr Continuous Insulation (CI) System Termination Trims are designed to be used on projects using 3-coat plaster over rigid insulation to meet the requirements of the new energy codes. Diamond-Furr Termination Trims eliminate 100% of the fastener penetrations around critical openings while providing an uninterrupted 3/8” furring.

The Plaster Window Surround (pt # DFWS) is intended to be used at termination points for the jamb, sill & head at recessed punched window conditions. (Glazers will guarantee their caulk joints due to the metal-to-metal condition). Double sided structural tape is added to the product for extra moisture protection. The Diamond-Furr difference has a built-in furring strip designed to extend 3/8” beyond the rigid insulation. The furring strip creates a flexible connection point & full embedment for 3.4lb metal lath when attached using 18ga tie wire and completely eliminates the fastener penetrations through the rigid insulation and the WRB.

The Diamond-Furr Window Surround is designed to work in conjunction with Diamond-Furr’s CI System Furring Strips (See: pt # DF-375). We recommend using the complete Diamond-Furr System for the best possible protection against moisture intrusion, superior lath embedment, minimal thermal bridging and greatly reduced exposure to moisture migration responsibility.

For warranty purposes, please refrain from using spray foam with this system.

MATERIAL

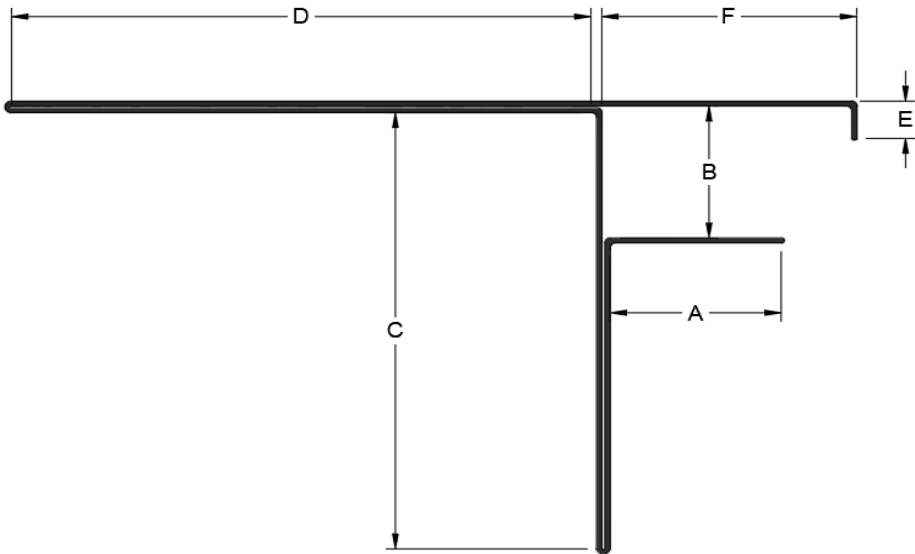
MATERIAL: Galvanized Steel G90  
THICKNESS: 22 GA  
LENGTH: Standard 10 ft.

STANDARD SPECIFICATION

ASTM A653  
ASTM C1063  
ASTM C926  
ASTM C1861



WINDOW SURROUND ID OVERVIEW: DFWS



ID	POLYISO	A	B	C	D	E	F
DFWS-1375	1"	1-3/8"	1"	3-1/2"	3"	1/4"	1-7/8"
DFWS-15375	1-1/2"	1-7/8"	1"	3-1/2"	3"	1/4"	2-3/8"
DFWS-2375	2	2-3/8"	1"	3-1/2"	3"	1/4"	2-7/8"
DFWS-3375	3"	3-3/8"	1"	3-1/2"	3"	1/4"	3-7/8"



## WINDOW SURROUND ASSEMBLY

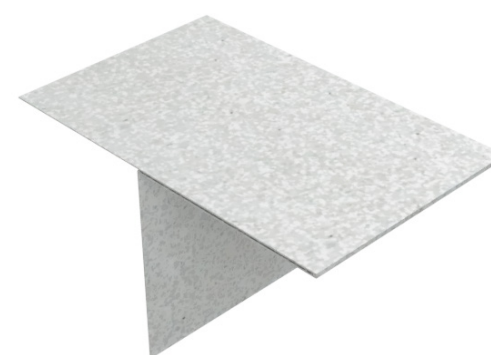
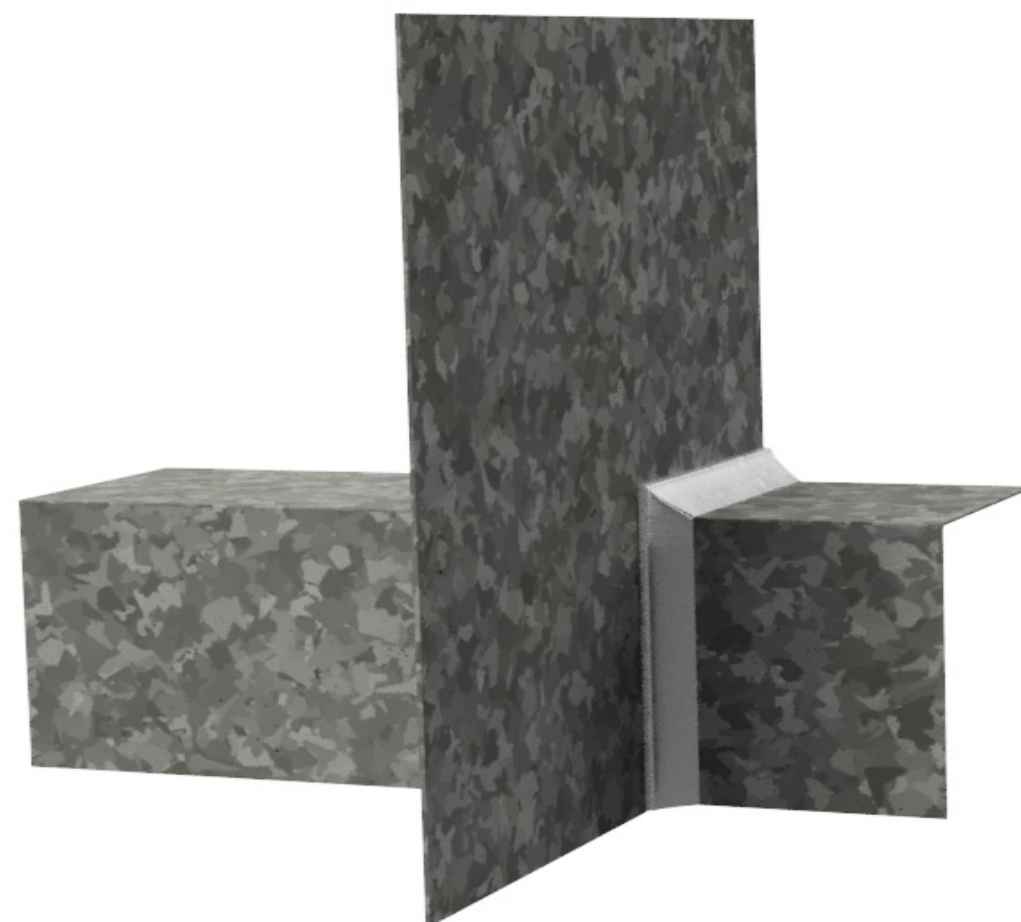
Factory-made, solder-fastened clips simplify window surround assembly. These 26-gauge galvanized steel clips also function as flashing for recessed windows and are compatible with window surrounds, sills, jambs, and headers.

Polyurethane or silicone caulking must be used where corners splice together.

PUNCHED/RECESSED WINDOW

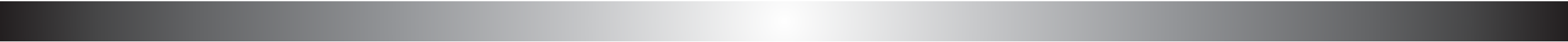


PUNCHED RECESSED WINDOW CLIP: PCCF



WINDOW SURROUND SPLICE  
PLATE

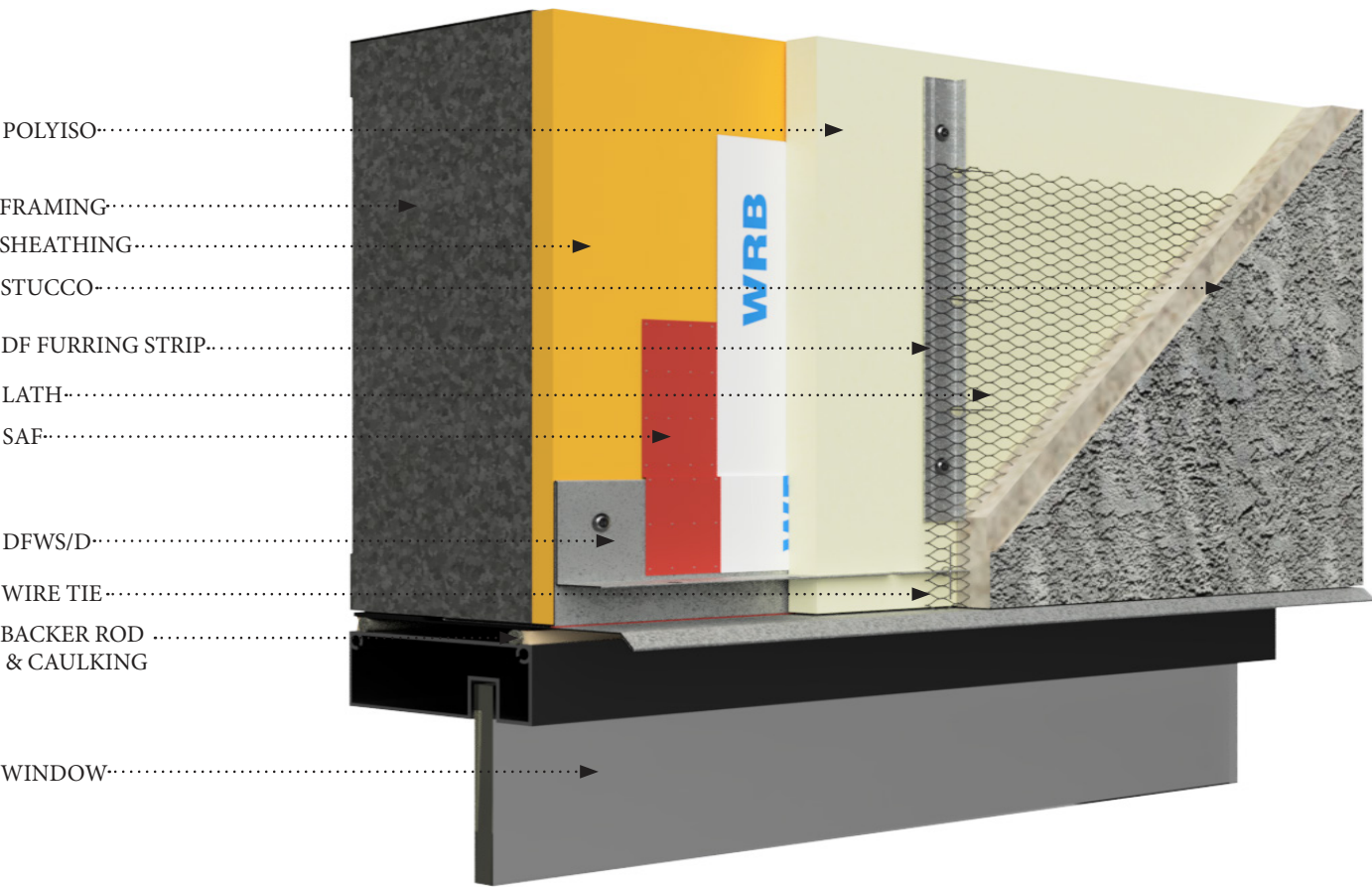
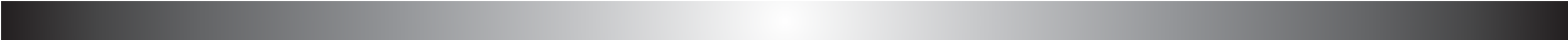
DIAMOND<>FURR<sup>®</sup> PATENTED



BLANK FOR PRINTING PURPOSES



WINDOW SURROUND HEADER OVERVIEW: DFWSD



DESCRIPTION

The Diamond-Furr Continuous Insulation (CI) System Termination Trims are designed to be used on projects using 3-coat plaster over rigid insulation to meet the requirements of the new energy codes. Diamond-Furr Termination Trims eliminate 100% of the fastener penetrations around critical openings while providing an uninterrupted 3/8” furring.

The Plaster Window Surround Drip(pt # DFWSD) is intended to be used at termination points for the jamb, sill & head at recessed punched window conditions. (Glazers will guarantee their caulk joints due to the metal-to-metal condition). Double sided structural tape is added to the product for extra moisture protection. The Diamond-Furr difference has a built-in furring strip designed to extend 3/8” beyond the rigid insulation. The furring strip creates a flexible connection point & full embedment for 3.4lb metal lath when attached using 18ga tie wire and completely eliminates the fastener penetrations through the rigid insulation and the WRB.

The Diamond-Furr Window Surround is designed to work in conjunction with Diamond-Furr’s CI System Furring Strips (See: pt # DF-375). We recommend using the complete Diamond-Furr System for the best possible protection against moisture intrusion, superior lath embedment, minimal thermal bridging and greatly reduced exposure to moisture migration responsibility.

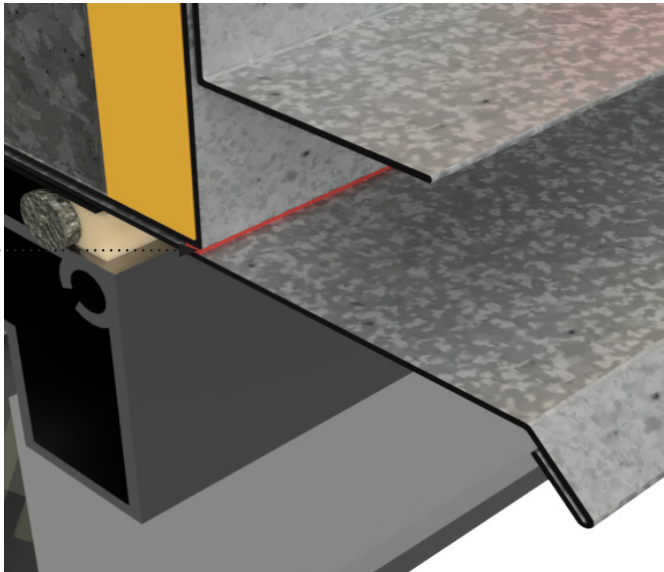
For warranty purposes, please refrain from using spray foam with this system.

MATERIAL

MATERIAL: Galvanized Steel G90  
THICKNESS: 20 GA  
LENGTH: Standard 10 ft.

STANDARD SPECIFICATION

ASTM A653  
ASTM C1063  
ASTM C926  
ASTM C1861

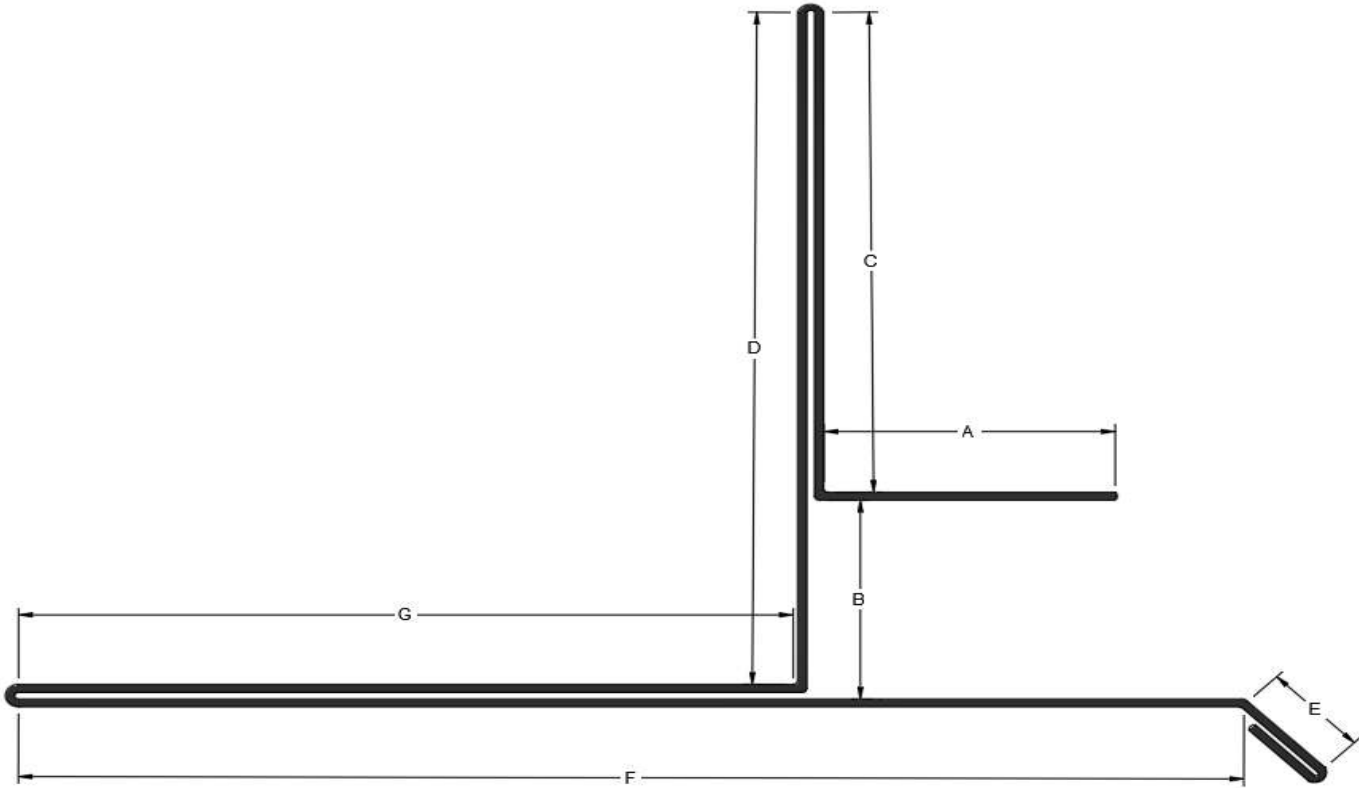


FACTORY APPLIED STRUCTURAL DOUBLE SIDED TAPE





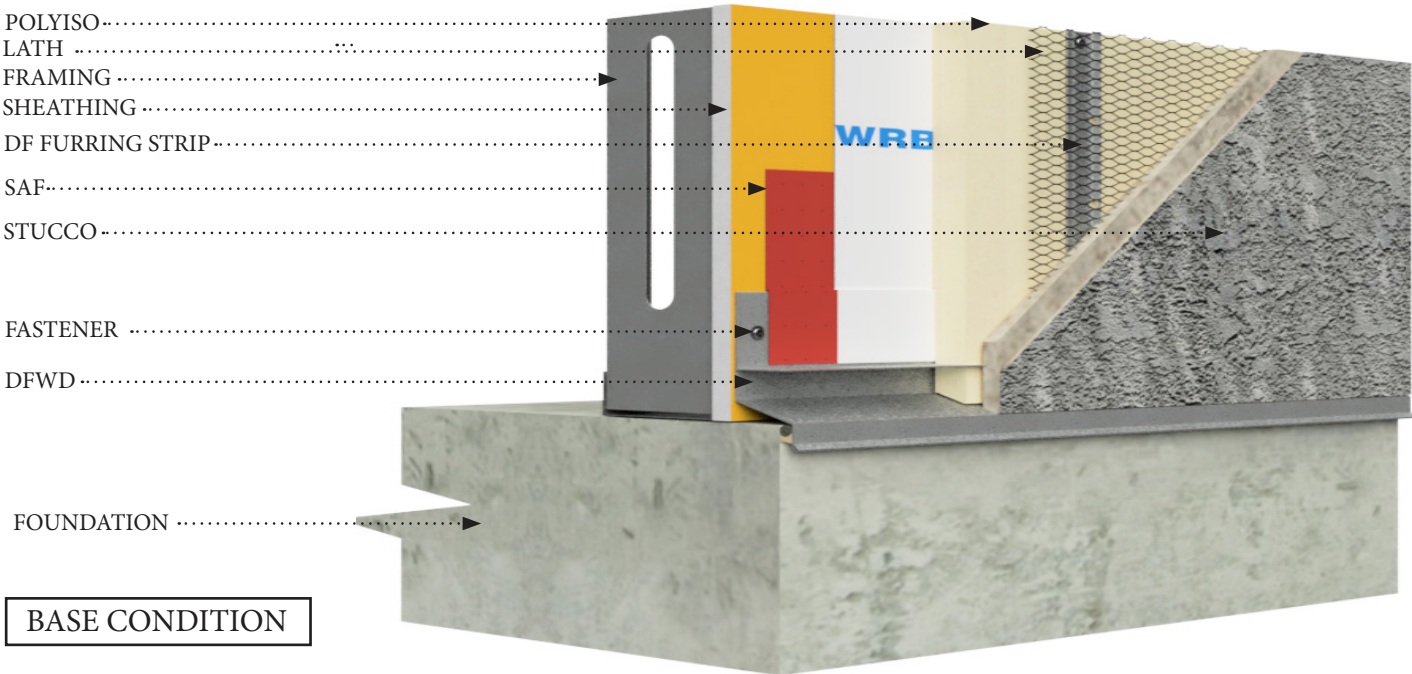
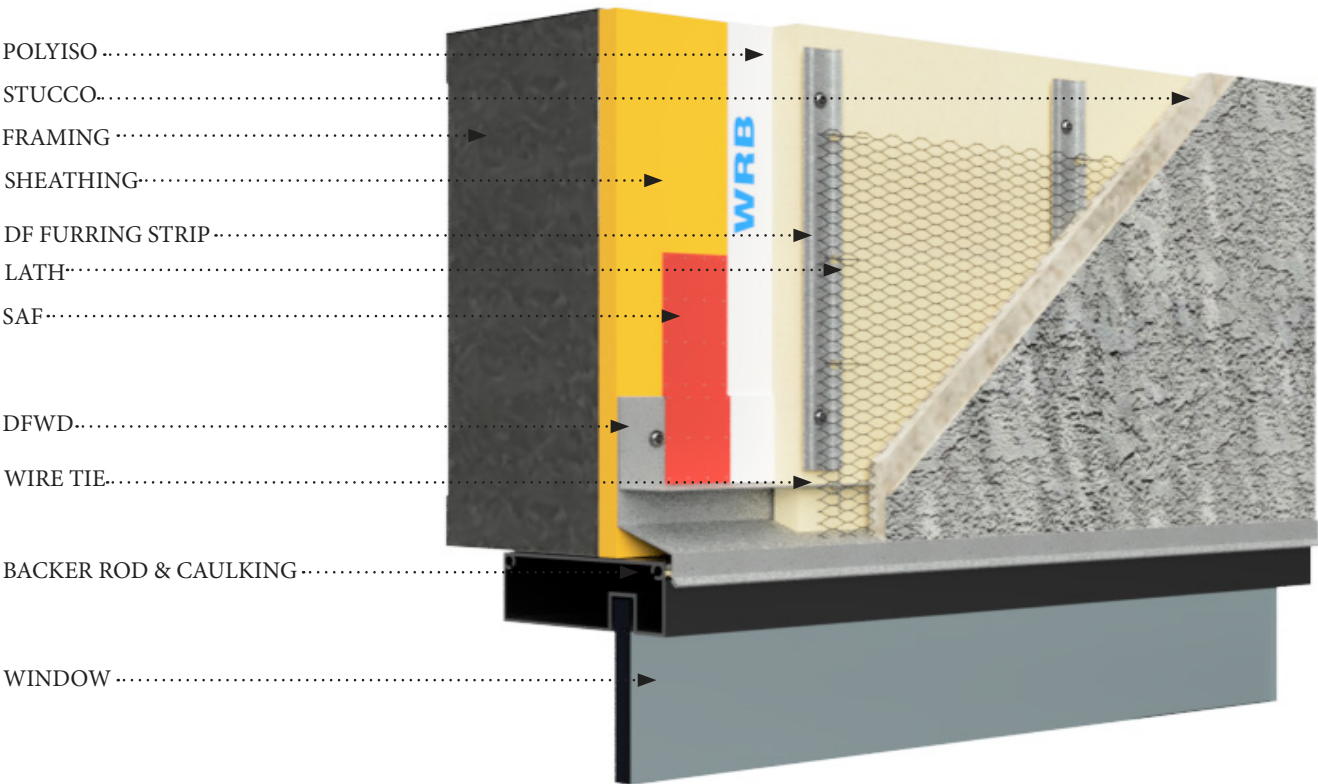
WINDOW SURROUND HEADER ID CHART: DFWSD



ID	POLYISO	A	B	C	D	E	F	G
DFWSD-1375	1"	1-3/8"	1"	2-1/2"	3-1/2"	1/4"	4-7/8"	3"
DFWSD-15375	1-1/2"	1-7/8"	1"	2-1/2"	3-1/2"	1/4"	5-3/8"	3"
DFWSD-2375	2"	2-3/8"	1"	2-1/2"	3-1/2"	1/4"	5-7/8"	3"
DFWSD-3375	3"	3-3/8"	1"	2-1/2"	3-1/2"	1/4"	6-7/8"	3"



DRIP EDGE OVERVIEW: DFWD



DESCRIPTION

The Diamond-Furr Continuous Insulation (CI) System Termination Trims are designed to be used on projects using 3-coat plaster over rigid insulation to meet the requirements of the new energy codes. Diamond-Furr Termination Trims eliminate 100% of the fastener penetrations around critical openings while providing an uninterrupted 3/8” furring.

The Plaster Window Drip (pt # DFWD-1375) is intended to be used at termination points above doors and windows similar to a standard drip edge. The Diamond-Furr difference is the built-in furring strip designed to extend 3/8” beyond the rigid insulation. The furring strip creates a flexible connection point for standard metal lath when properly attached using tie wire and completely eliminates the fastener penetrations through the rigid insulation and the WRB.

The Diamond-Furr Window Drip is designed to work in conjunction with Diamond-Furr’s CI System Furring Strips (See: pt # DF-1375). We recommend using the complete Diamond-Furr System for the best possible protection against moisture intrusion, superior lath embedment, minimal thermal bridging and greatly reduced exposure to moisture migration responsibility.

For warranty purposes, please refrain from using spray foam with this system.

MATERIAL

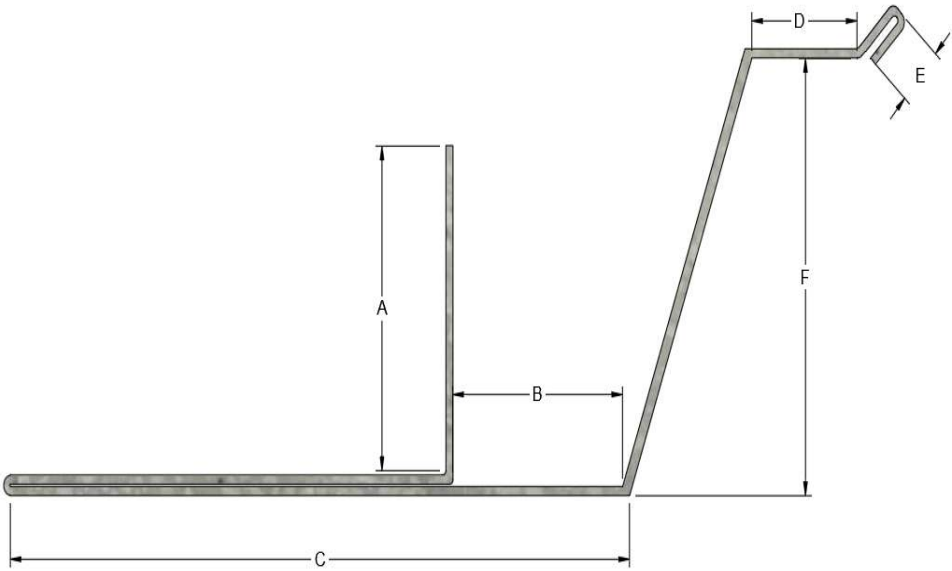
MATERIAL: Galvanized Steel G90  
THICKNESS: 22 GA  
LENGTH: Standard 10 ft.

STANDARD SPECIFICATION

ASTM A653  
ASTM C1063  
ASTM C926  
ASTM C1861



DRIP EDGE ID CHART: DFWD



ID	POLYISO	A	B	C	D	E	F
DFWD-1375	1"	1-3/8"	1"	3-1/2"	1"	1/4"	1-7/8"
DFWD-15375	1-1/2"	1-7/8"	1"	3-1/2"	1"	1/4"	2-3/8"
DFWD-2375	2"	2-3/8"	1"	3-1/2"	1"	1/4"	2-7/8"
DFWD-3375	3"	3-3/8"	1"	3-1/2"	1"	1/4"	3-7/8"



## DRIP EDGE AND PLASTER STOP CORNERS

Say goodbye to unsightly corner gaps! Achieve professional-looking results with precise miter cuts on both inside and outside corners. These cuts are then reinforced with heavy-duty 26 Ga galvanized clips, ensuring a smooth, unified appearance and lasting strength. Plus, for a hassle-free installation experience, fabrication clips are included, making the process quick and easy. The end result? Crisp, clean corners that elevate the look of your entire project.

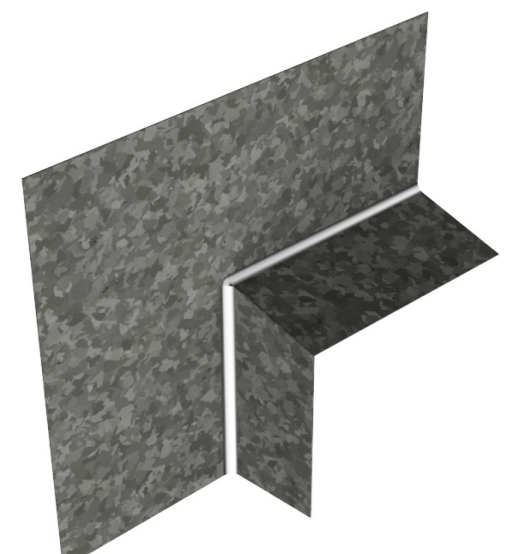
DRIP EDGE TO PLASTER STOP



DRIP EDGE TO PLASTER STOP



SOLDERED CORNER CONNECTION: PCCWD



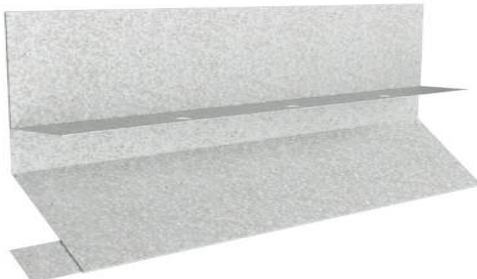
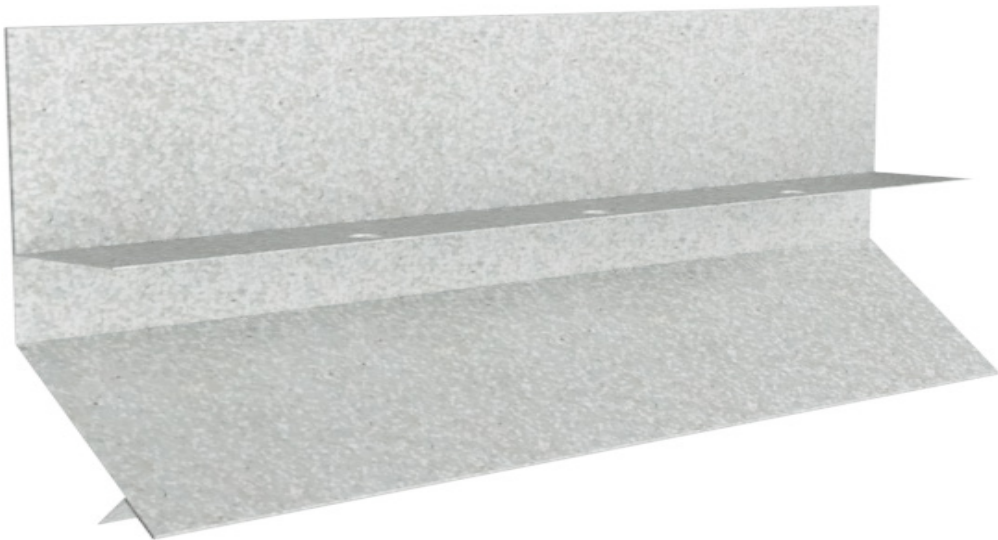
DIAMOND<>FURR<sup>®</sup> PATENTED



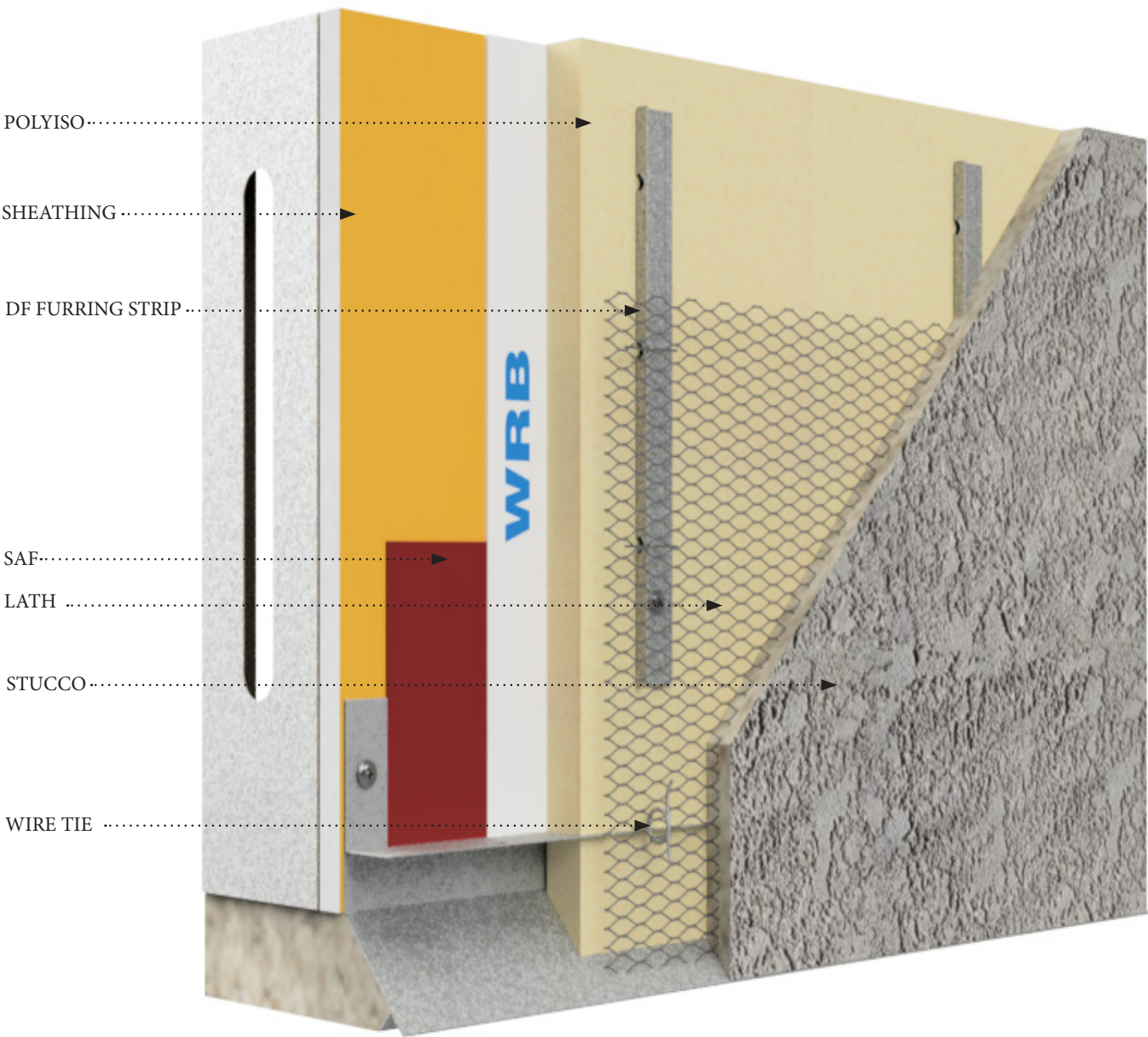
BLANK FOR PRINTING PURPOSES



#19 DRIP EDGE MOLDING OVERVIEW: DF#19



Connection Splice Plate



DESCRIPTION

The Diamond-Furr Termination Trims for Continuous Insulation (CI) Systems are designed specifically to meet the requirements of the new energy codes when using 3-coat plaster over continuous rigid insulation. Diamond-Furr trims eliminate 100% of the fastener penetrations through the WRB around critical opening such as windows and doors while providing an uninterrupted 3/8” furring for a superior scratch coat.

The CI System #19 Drip Edge Molding (pt # DF#19) directs water away from the edges of your stucco, keeping it dry and protected from damage. It features a splicing plate that makes it easy to join pieces together. Our patented design provides a built-in furring strip which extends 3/8” above the rigid insulation. The furring strip allows for a flexible connection point for metal lath which is secured using tie wire and a butterfly tie. This method of attachment effectively eliminates 100% of the fastener penetrations through the moisture barrier in this critical area.

Our #19 Drip Edge Molding works in conjunction with the Diamond-Furr CI System Field Furring Strips which reduce field penetrations by 55%. We recommend using the complete Diamond-Furr System for the best possible protection against moisture intrusion, superior lath embedment, minimal thermal bridging and significantly reduced exposure to moisture intrusion responsibility.

For warranty purposes, please refrain from using spray foam with this system.

MATERIAL

MATERIAL: Galvanized Steel G90  
THICKNESS: 22 GA  
LENGTH: Standard 10 ft.

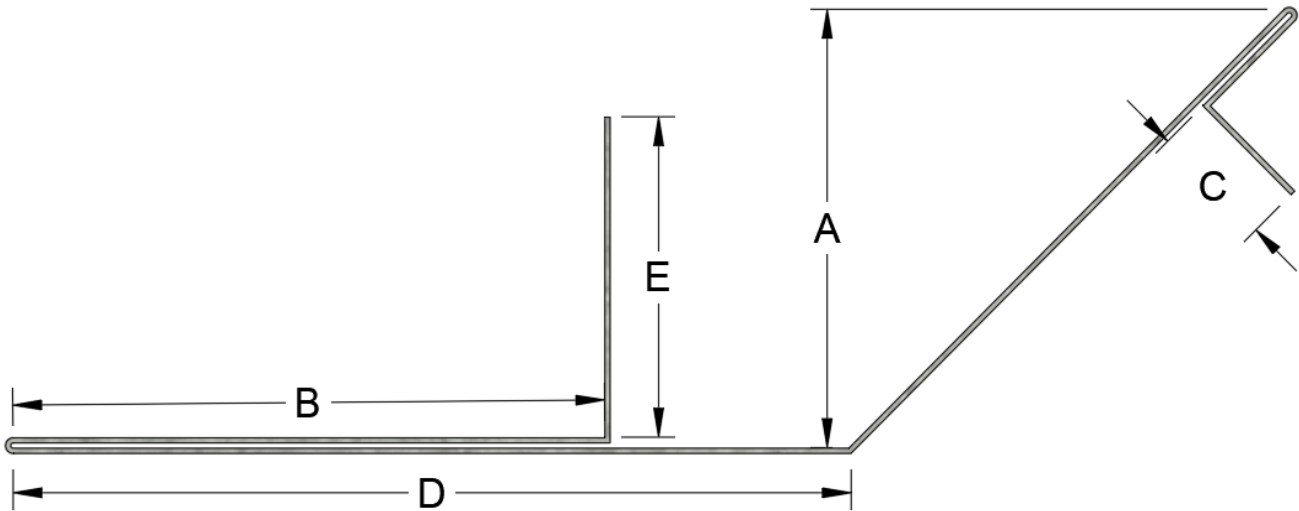
STANDARD SPECIFICATION

ASTM A653  
ASTM C1063  
ASTM C926  
ASTM C1861





#19 DRIP EDGE MOLDING ID CHART: DF#19

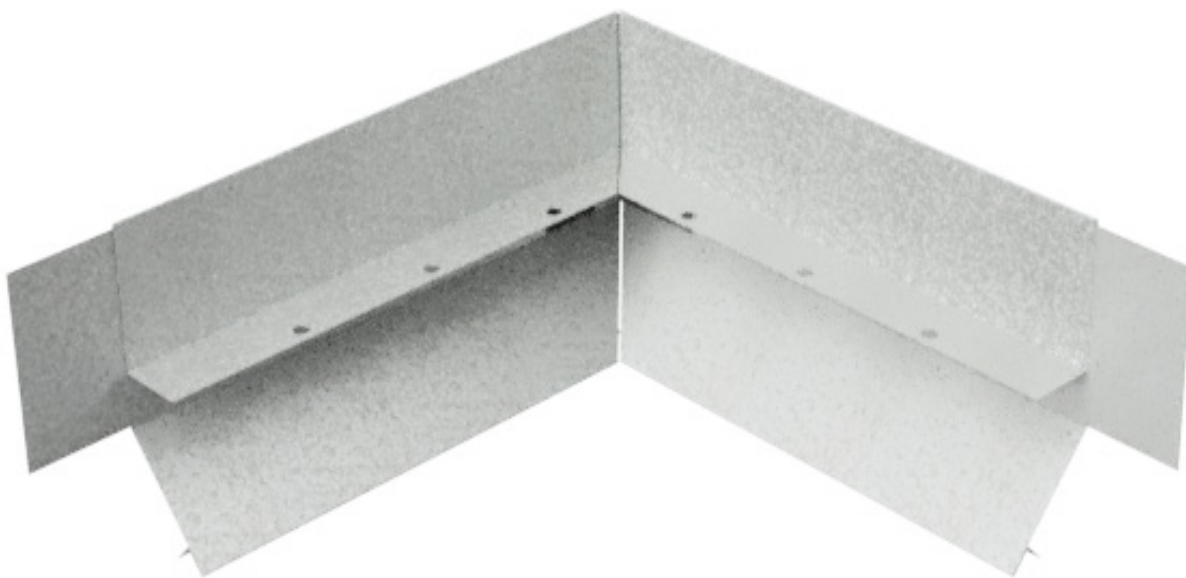


ID	POLYISO	DIM A	DIM B	DIM C	DIM D	DIM E
DF#19-1375	1"	1-3/8"	2-1/2"	1/2"	3-1/2"	1-3/8"
DF#19-15375	1-1/2"	1-7/8"	2-1/2"	1/2"	3-1/2"	1-7/8"
DF#19-2375	2"	2-3/8"	2-1/2"	1/2"	3-1/2"	2-3/8"
DF#19-3375	3"	3-3/8"	2-1/2"	1/2"	3-1/2"	3-3/8"

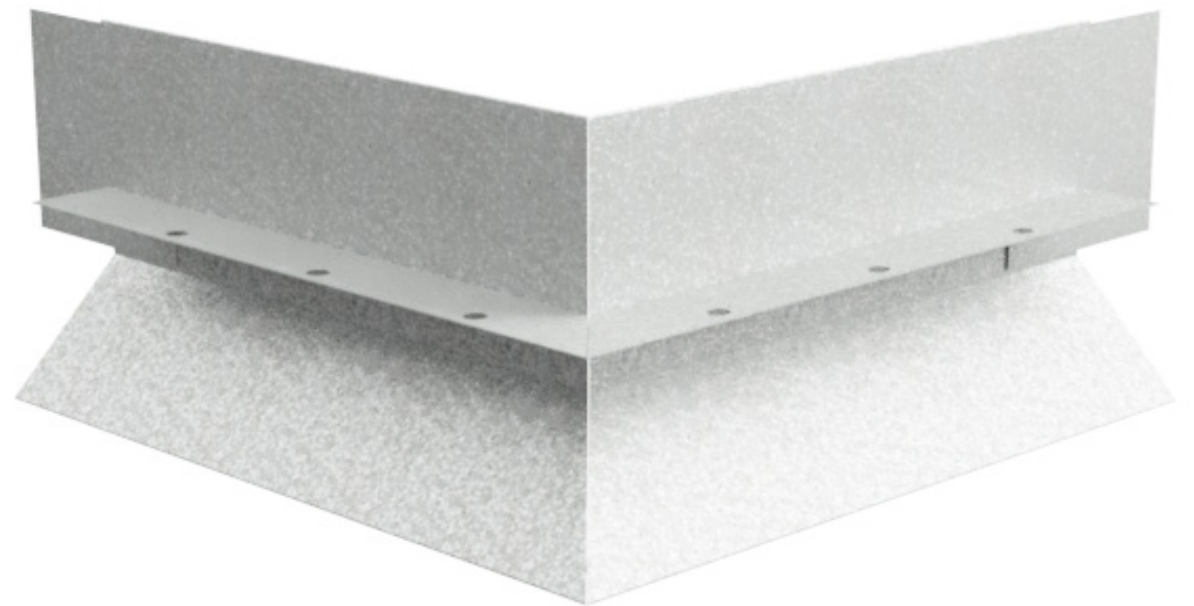
## DRIP EDGE CORNERS: DF#19 CORNERS

Say goodbye to unsightly corner gaps! Achieve professional-looking results with precise miter cuts on both inside and outside corners. These cuts are then reinforced with heavy-duty 26 Ga galvanized clips, ensuring a smooth, unified appearance and lasting strength. Plus, for a hassle-free installation experience, fabrication clips are included, making the process quick and easy. The end result? Crisp, clean corners that elevate the look of your entire project. Polyurethane or silicone caulking must be used where corners splice together & all butt joints. Splicing clips and L angle connection clips are provided.

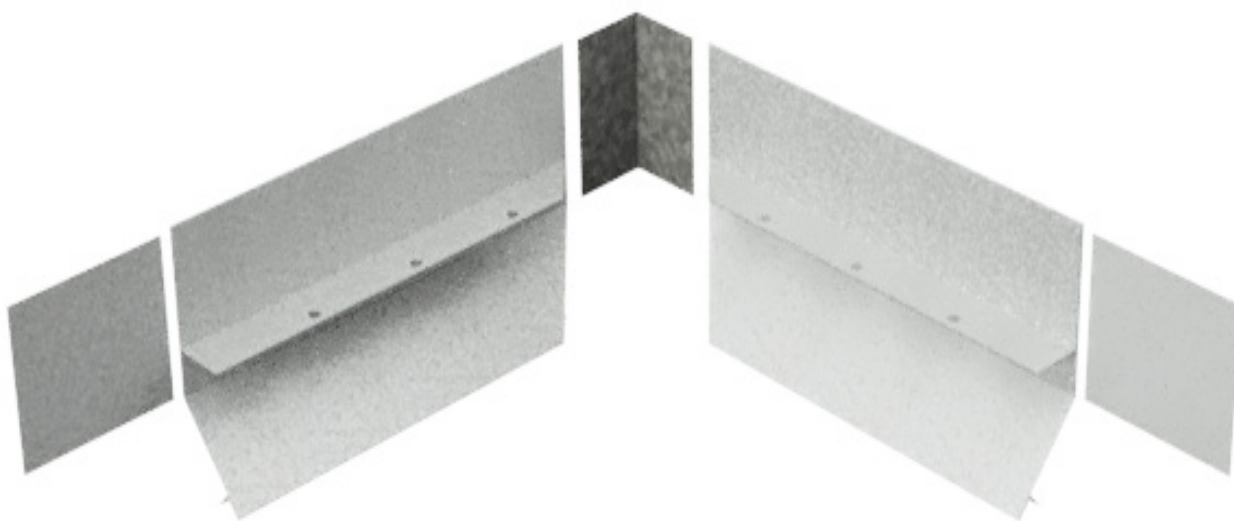
INSIDE CORNER PART A & B



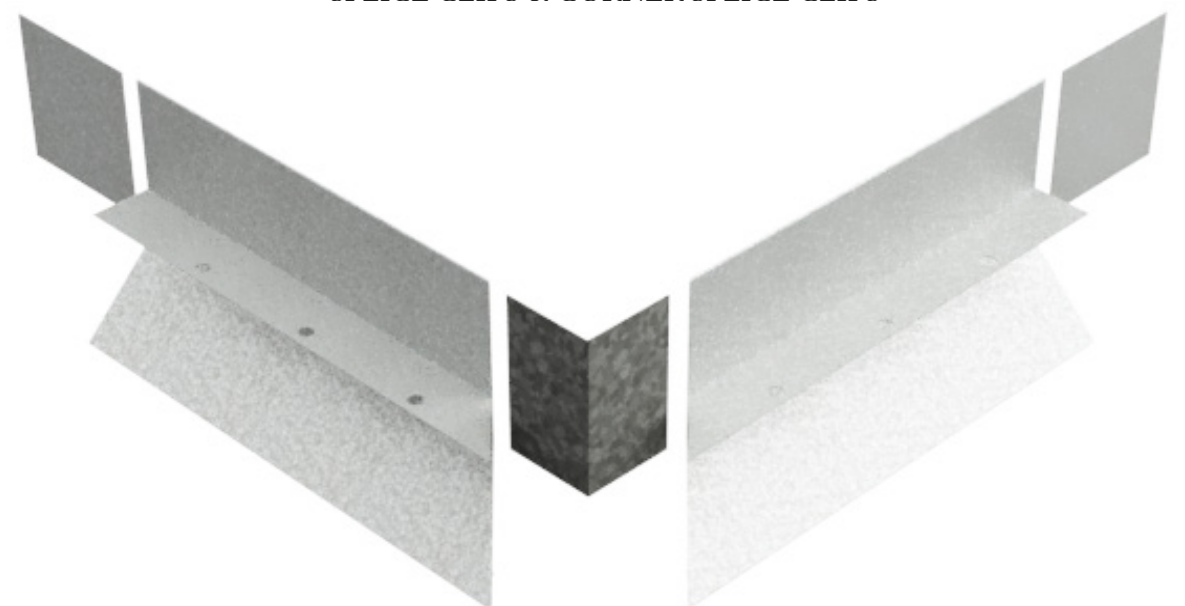
OUTSIDE CORNER PART A & B



INSIDE CORNER PART A & B  
SPlice CLIPS & CORNER SPlice CLIPS



OUTSIDE CORNER PART A & B  
SPlice CLIPS & CORNER SPlice CLIPS



DIAMOND<>FURR<sup>®</sup> PATENTED



BLANK FOR PRINTING PURPOSES