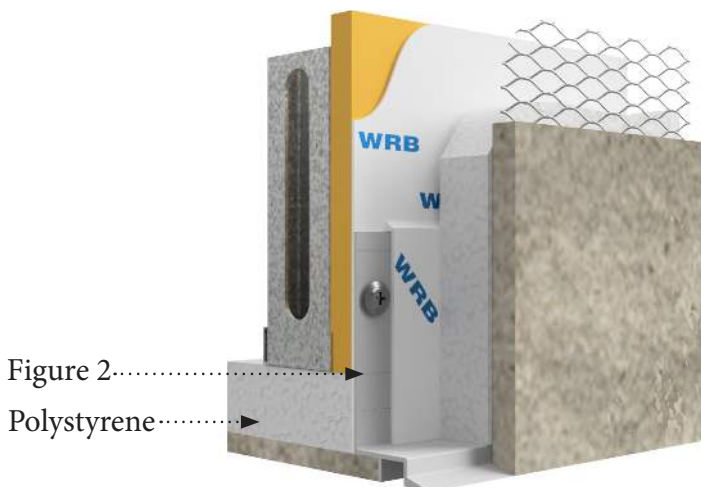
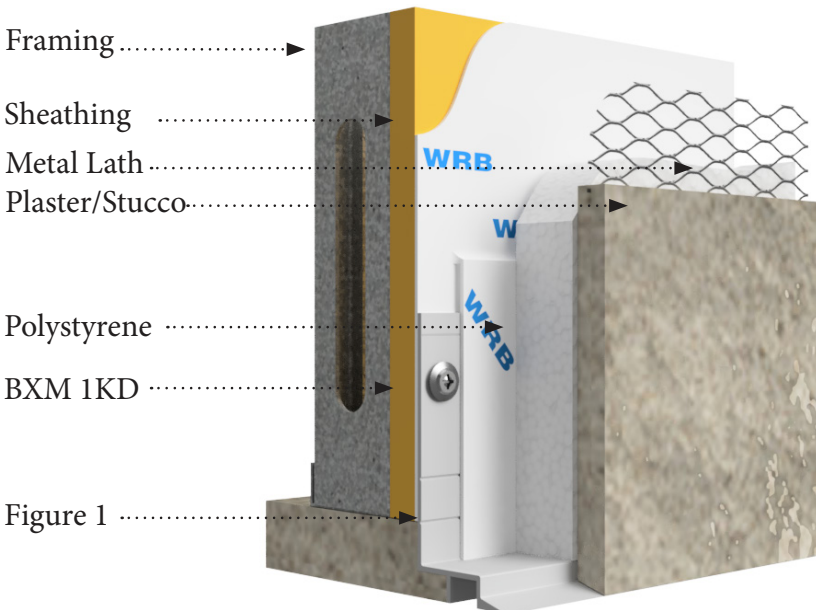
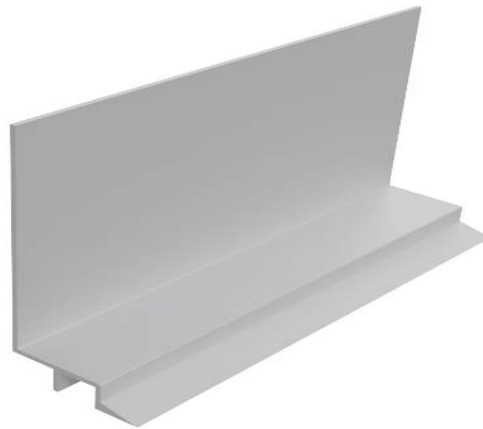


ONE KOTE DRIP OVERVIEW



DESCRIPTION

Residential Drip Screenshot 1 Kote Drip Screenshot made for residential applications.
 1-KD DESCRIPTION: The perfect solution to join fascia and soffits while preventing soffit water stains from runoff. The one coat Drip Screenshot has a 1/2" reveal and accommodates standard One coat plaster over 1" foam with a 1-3/8" ground. This trim has a unique feature in that it is weep-able on the fascia.
 Figure 1: Marker for 7/8" stucco.
 Figure 2: Marker for 3/8" stucco.

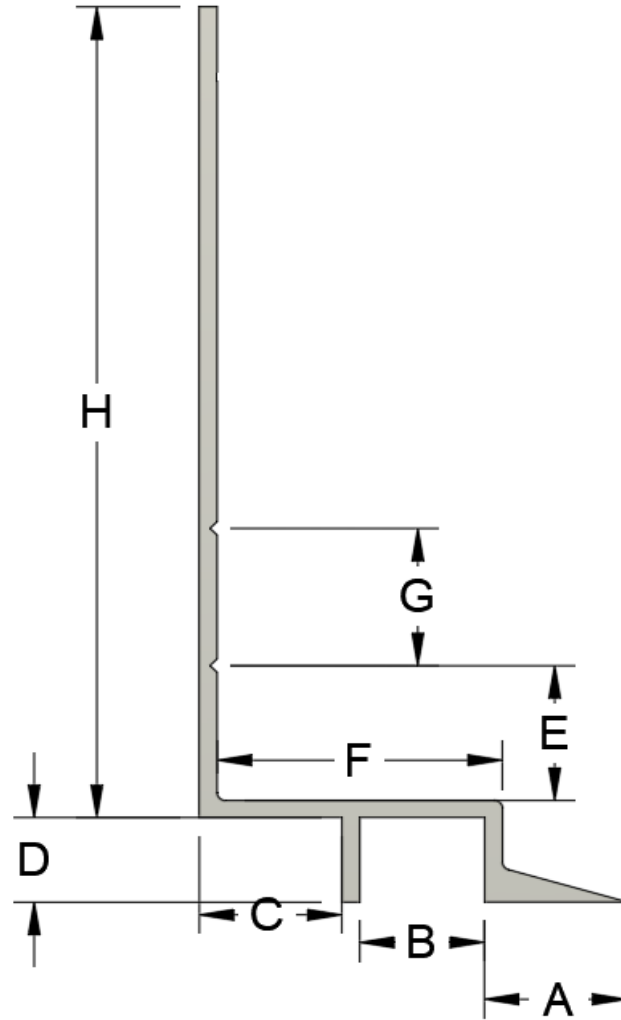
MATERIAL

MATERIAL: Aluminum Alloy 6063 T5 ASTM: B221, C1047, C1063, C841
 THICKNESS: Nominal .050
 LENGTH: Standard 10 ft.
 FINISH: Standard-Clear anodized Architectural 200R1 Medium Etch AAM32C10A21

AVAILABLE FINISHES

- Chem Film or 'Mill Finish' for field painting.
- Class 1 Bronze & Black Anodized
- 6500 Different Powder Coat Colors
- Kynar Finish

ONE KOTE DRIP ID CHART

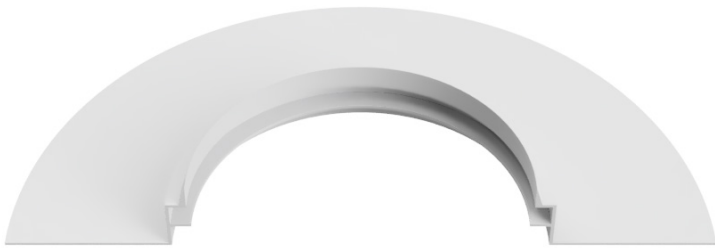


ID	DIM A	DIM B	DIM C	DIM D	DIM E	DIM F	DIM G	DIM H
BXM 1KD 1375-50 DRIP SCREED	1/2"	1/2"	1/2"	5/16"	1/2"	1"	1/2"	3-1/16"

EXPANSION JOINT RADIUS/CURVING

Brand X Metals, Inc. has in-house capabilities to curve interior and exterior trims for your job specifications.
One Kote Drip can be curved in all four directions.

TYPE-1



TYPE-2



TYPE-3



TYPE-4

