



***EXTRUDED ALUMINUM
PLASTER & STUCCO
TRIMS***



TABLE OF CONTENTS

CORNER MOLD

- 6 FASCIA CORNER MOLDING TRIM OVERVIEW
- 7 FASCIA CORNER MOLDING TRIM ID CHART

DRIP CATEGORY

- 8 TWO PIECE DRIP SCREED OVERVIEW
- 9 TWO PIECE DRIP SCREED ID CHART
- 10 TWO PIECE VENTED DRIP SCREED OVERVIEW
- 11 TWO PIECE VENTED DRIP SCREED ID CHART
- 12 DRIP SCREED OVERVIEW
- 13 DRIP SCREED ID CHART
- 14 VENTED DRIP SCREED OVERVIEW
- 15 VENTED DRIP SCREED ID CHART
- 16 DRIP SCREED RADIUS/CURVING

EXPANSION JOINT

- 18 EXPANSION JOINT OVERVIEW
- 19 EXPANSION JOINT ID CHART

ONE KOTE

- 20 RESIDENTIAL DRIP SCREED OVERVIEW
- 21 RESIDENTIAL DRIP SCREED ID CHART
- 22 RESIDENTIAL DRIP SCREED RADIUS/CURVING
- 24 ONE COAT PLASTER CHANNEL OVERVIEW
- 25 ONE COAT PLASTER CHANNEL ID CHART
- 26 ONE COAT PLASTER CHANNEL INTERSECTION & CORNERS



TABLE OF CONTENTS

ONE KOTE

- 28 ONE COAT PLASTER CHANNEL OVERVIEW
- 29 ONE COAT PLASTER CHANNEL ID CHART

OUTSIDE CORNER

- 30 CORNER KEY OVERVIEW
- 31 CORNER KEY ID CHART

- 32 X CORNER REVEAL OVERVIEW
- 33 X CORNER REVEAL ID CHART

PLASTER CHANNEL SCREEDS & VENTS

- 34 1/4" PLASTER CHANNEL OVERVIEW
- 35 1/4" PLASTER CHANNEL ID CHART
- 36 1/4" PLASTER CHANNEL INTERSECTION & CORNERS
- 37 1/4" PLASTER CHANNEL RADIUS/CURVING

- 38 PLASTER CHANNEL SCREED OVERVIEW
- 39 PLASTER CHANNEL SCREED ID CHART
- 40 VENTED PLASTER CHANNEL SCREED OVERVIEW
- 41 VENTED PLASTER CHANNEL SCREED ID CHART
- 42 PLASTER CHANNEL SCREED INTERSECTION & CORNERS
- 43 PLASTER CHANNEL SCREED RADIUS/CURVING

- 44 F REVEAL OVERVIEW
- 45 F REVEAL ID CHART
- 46 VENTED F REVEAL OVERVIEW
- 47 VENTED F REVEAL ID CHART
- 48 F REVEAL INTERSECTION & CORNERS
- 49 F REVEAL RADIUS/CURVING



TABLE OF CONTENTS

PLASTER CHANNEL SCREEDS & VENTS

50	STREAMILNE PLASTER CHANNEL SCREED OVERVIEW
51	STREAMILNE PLASTER CHANNEL SCREED ID CHART
52	STREAMILNE PLASTER CHANNEL SCREED INTERSECTION & CORNERS
53	STREAMILNE PLASTER CHANNEL SCREED RADIUS/CURVING
54	CONTINUOUS REMOVABLE BALCONY VENT OVERVIEW
55	CONTINUOUS REMOVABLE BALCONY VENT ID CHART
56	ELIMINATOR TRIM OVERVIEW
57	ELIMINATOR TRIM ID CHART
58	ELIMINATOR TRIM INTERSECTION & CORNERS
60	F DRIP CAP OVERVIEW
61	F DRIP CAP ID CHART

CASING BEAD

62	J MOLD OVERVIEW
63	J MOLD ID
64	J MOLD RADIUS/CURVING

V REVEAL

66	NARROW V REVEAL OVERVIEW
67	NARROW V REVEAL ID CHART
68	NARROW V REVEAL INTERSECTION & CORNERS
69	NARROW V REVEAL RADIUS/CURVING
70	NARROW V CHANNEL OVERVIEW
71	NARROW V CHANNEL ID CHART
72	NARROW V CHANNEL INTERSECTION & CORNERS
73	NARROW V CHANNEL RADIUS/CURVING



TABLE OF CONTENTS

V REVEAL

- 74 SLIM V REVEAL OVERVIEW
- 75 SLIM V REVEAL ID CHART
- 76 SLIM V REVEAL INTERSECTION & CORNERS
- 77 SLIM V REVEAL RADIUS/CURVING

- 78 WIDE V REVEAL OVERVIEW
- 79 WIDE V REVEAL ID CHART
- 80 WIDE V REVEAL INTERSECTION & CORNERS
- 81 WIDE V REVEAL RADIUS/CURVING

- 82 EXRTA WIDE V REVEAL OVERVIEW
- 83 EXRTA WIDE V REVEAL ID CHART
- 84 EXRTA WIDE V REVEAL INTERSECTION & CORNERS
- 85 EXRTA WIDE V REVEAL RADIUS/CURVING

WINDOW SURROUND

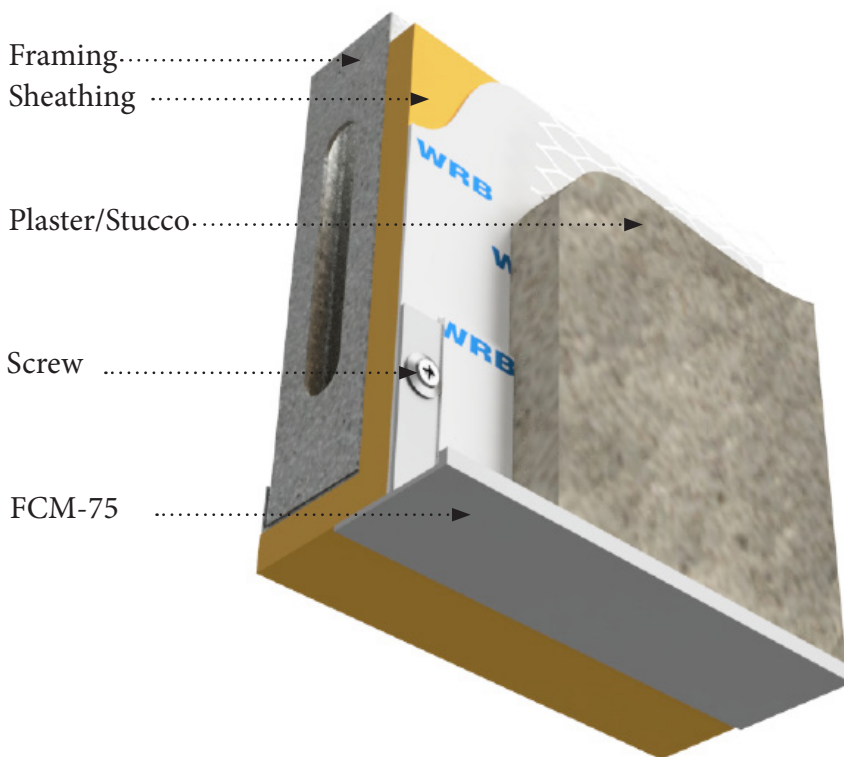
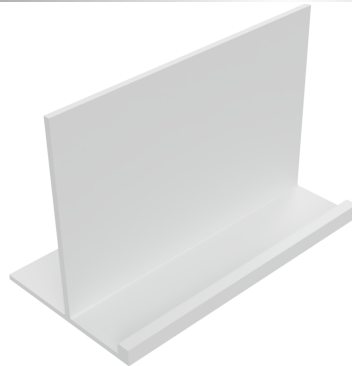
- 86 JAMB/SILL WINDOW SURROUND OVERVIEW
- 87 JAMB/SILL WINDOW SURROUND ID CHART

- 88 WINDOW HEADER DRIP OVERVIEW
- 89 WINDOW HEADER DRIP ID CHART

T MOLD

- 90 T MOLD OVERVIEW
- 91 T MOLD ID CHART
- 93 VENTED T MOLD OVERVIEW
- 94 VENTED T MOLD ID CHART

FASCIA CORNER TRIM OVERVIEW



DESCRIPTION

Fascia Corner Trim is a versatile product that can be used to create a clean, finished look in a variety of applications. It is designed as a fascia plaster stop /acoustical ceiling tile wall angle, but can also be used to create corner joints in other materials, such as drywall, wood, and vinyl siding.

Fascia Corner Trim is made from high-quality aluminum and is available in a variety of finishes to match your existing décor. It is easy to install and maintain, and will provide years of trouble-free service.

MATERIAL

MATERIAL: Aluminum Alloy 6063 T5 ASTM: B221, C1047, C1063, C841
THICKNESS: Nominal .050
LENGTH: Standard 10 ft.
FINISH: Standard-Clear anodized Architectural 200R1 Medium Etch AAM32C10A21

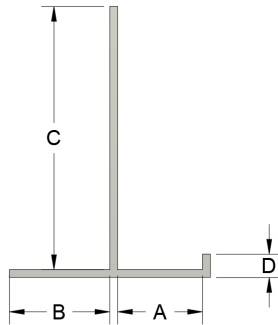
AVAILABLE FINISHES

- Chem Film or 'Mill Finish' for field painting.
- Class 1 Bronze & Black Anodized
- 6500 Different Powder Coat Colors
- Kynar Finish



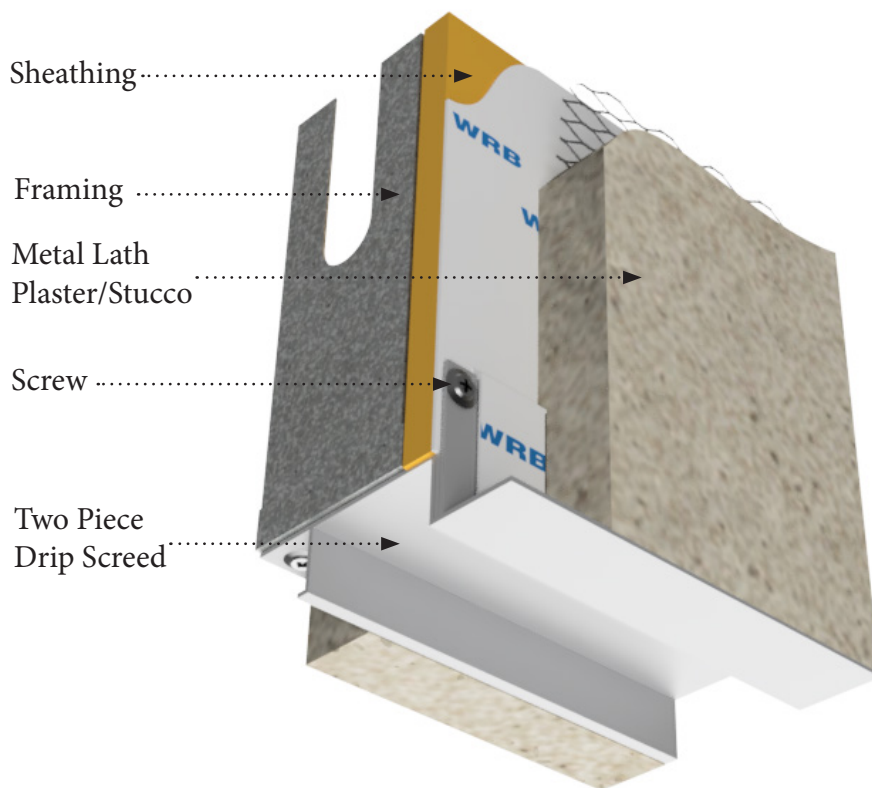
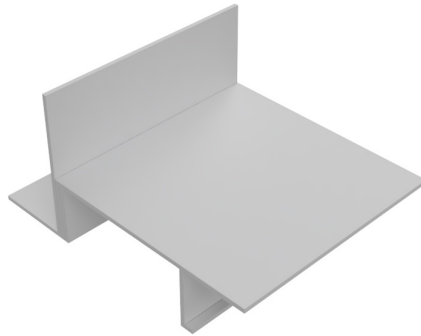
PLASTER & STUCCO EXTRUSIONS

FASCIA CORNER TRIM ID CHART



ID	DIM A	DIM B	DIM C	DIM D
FCM 75	3/4"	3/4"	2-3/16"	3/16"

TWO PIECE DRIP SCREED OVERVIEW



DESCRIPTION

The 2-piece Drip Screed offers the same function as the standard DS 875-875 (Standard Drip Screed) with a variety of reveal sizes. The perfect solution to join fascia and soffits while preventing soffit water stains from runoff. The 2-piece Drip Screed is designed for 3-coat plaster on the fascia and soffit but ground sizes can be altered to accommodate smaller ground sizes.

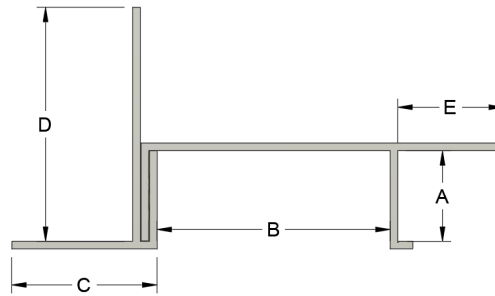
MATERIAL

MATERIAL: Aluminum Alloy 6063 T5 ASTM: B221, C1047, C1063, C841
THICKNESS: Nominal .050
LENGTH: Standard 10 ft.
FINISH: Standard-Clear anodized Architectural 200R1 Medium Etch AAM32C10A21

AVAILABLE FINISHES

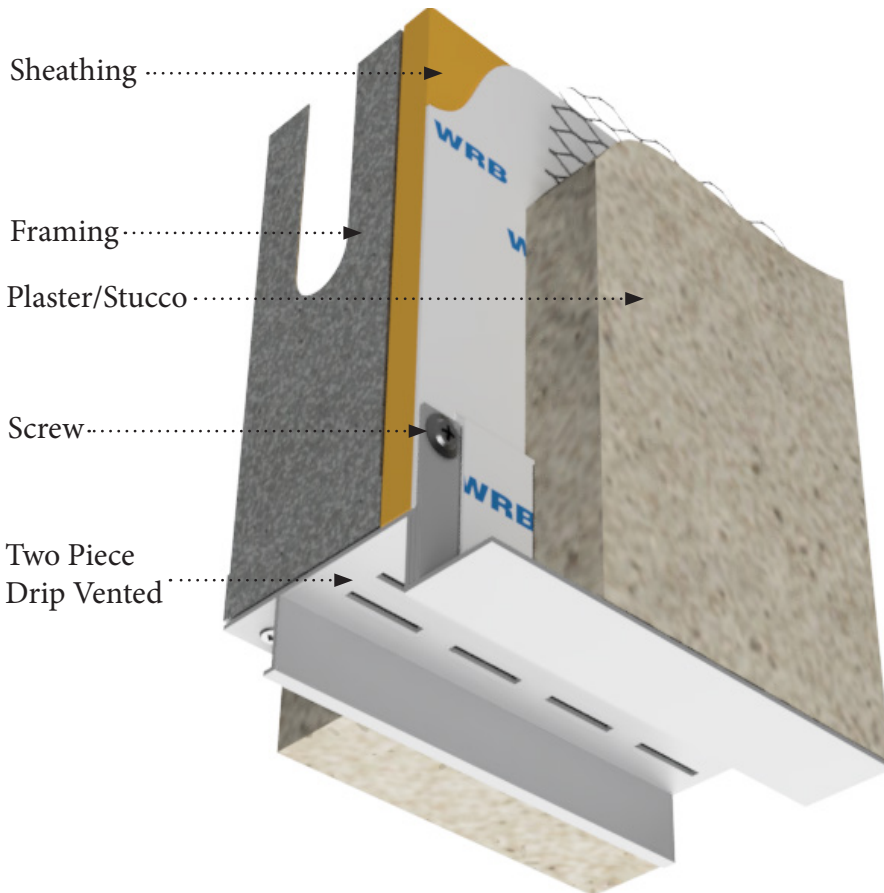
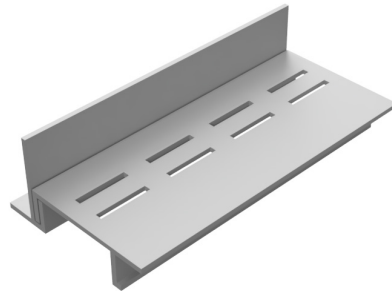
- Chem Filim or 'Mill Finish' for field painting.
- Class 1 Bronze & Black Anodized
- 6500 Different Powder Coat Colors
- Kynar Finish

TWO PIECE DRIP SCREED ID CHART



ID	DIM A	DIM B	DIM C	DIM D	DIM E
DS 875-100	7/8"	1"	7/8"	2"	3/4"
DS 875-150	7/8"	1-1/2"	7/8"	2"	3/4"
DS 875-200	7/8"	2"	7/8"	2"	3/4"
DS 875-300	7/8"	3"	7/8"	2"	3/4"
DS 875-400	7/8"	4"	7/8"	2"	3/4"

TWO PIECE DRIP SCREED OVERVIEW



DESCRIPTION

The 2-piece Drip Screed offers the same function as the standard DS 875-875 (Standard Drip Screed) with a variety of reveal sizes. Designed for optimal moisture management, our vented aluminum drip screed provides a reliable solution to protect your building's exterior. The two-part design ensures easy installation and maximum efficiency, allowing water to properly drain away from vulnerable areas while maintaining proper ventilation.

Crafted from high-quality aluminum, our drip screed offers exceptional durability and resistance to corrosion, ensuring its longevity and performance even in harsh weather conditions. The vented feature promotes airflow, preventing moisture buildup and potential damage to your building's structure.

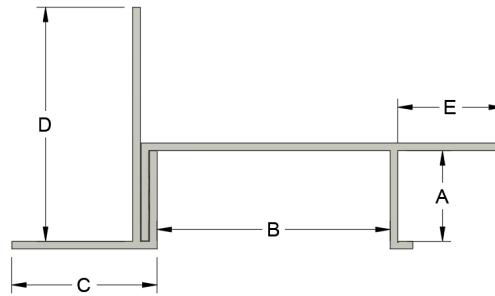
MATERIAL

MATERIAL: Aluminum Alloy 6063 T5 ASTM: B221, C1047, C1063, C841
THICKNESS: Nominal .050
LENGTH: Standard 10 ft.
FINISH: Standard-Clear anodized Architectural 200R1 Medium Etch AAM-32C10A21

AVAILABLE FINISHES

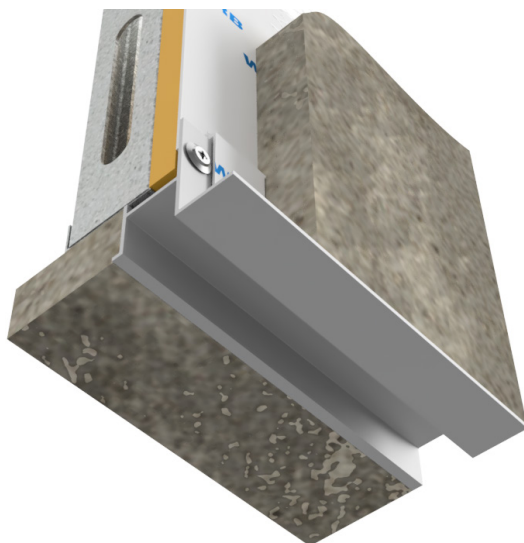
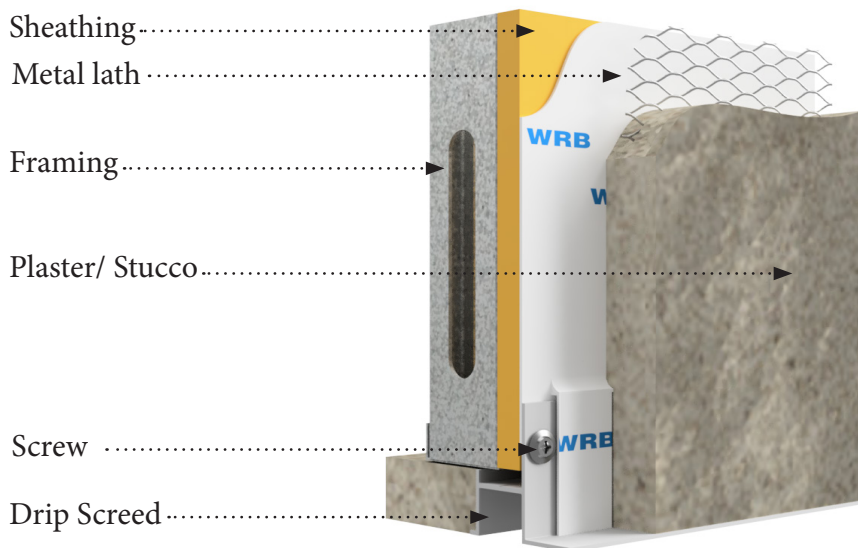
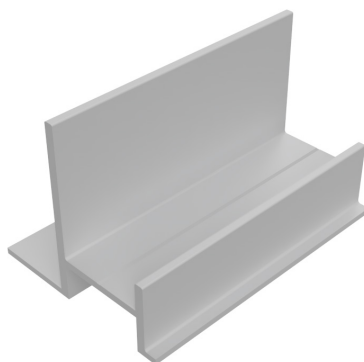
- Chem Film or 'Mill Finish' for field painting.
- Class 1 Bronze & Black Anodized
- 6500 Different Powder Coat Colors
- Kynar Finish

TWO PIECE DRIP SCREED ID CHART



ID	DIM A	DIM B	DIM C	DIM D	DIM E
DS 875-V-100	7/8"	1"	7/8"	2"	3/4"
DS 875-V-150	7/8"	1-1/2"	7/8"	2"	3/4"
DS 875-V-200	7/8"	2"	7/8"	2"	3/4"
DS 875-V-300	7/8"	3"	7/8"	2"	3/4"
DS 875-V-400	7/8"	4"	7/8"	2"	3/4"

DRIP SCREED OVERVIEW



DESCRIPTION

The DS 875 Drip Screed is the ideal solution for joining fascia and soffit while preventing water stains on the soffit from runoff. It features an industry-standard 7/8" fascia reveal that can accommodate standard 3-coat plaster on the fascia and soffit. The drip joint effectively prevents water blemishes on the soffit & vertical walls of the building. Additionally, a longer flange option with a nailing flange of 3-1/2", providing greater flexibility for installers when dealing with 5/8" sheathing.

MATERIAL

MATERIAL: Aluminum Alloy 6063 T5 ASTM: B221, C1047, C1063, C841
THICKNESS: Nominal .050
LENGTH: Standard 10 ft.
FINISH: Standard-Clear anodized Architectural 200R1 Medium Etch AAM32C10A21

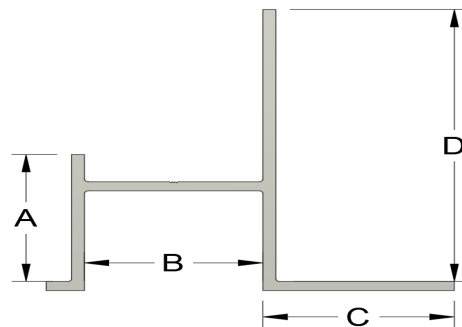
AVAILABLE FINISHES

- Chem Film or 'Mill Finish' for field painting.
- Class 1 Bronze & Black Anodized
- 6500 Different Powder Coat Colors
- Kynar Finish



PLASTER & STUCCO EXTRUSIONS

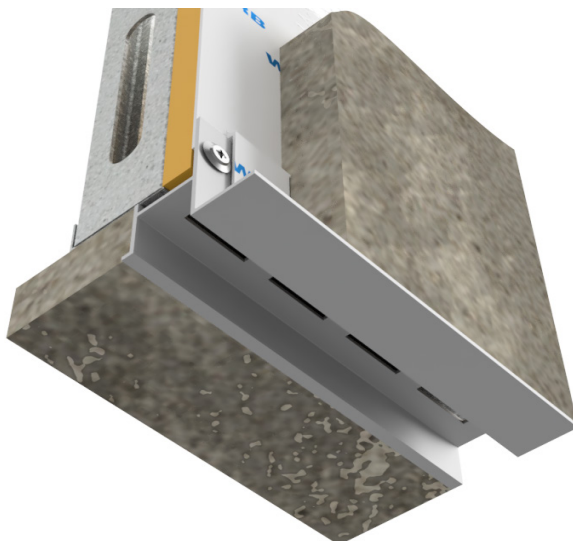
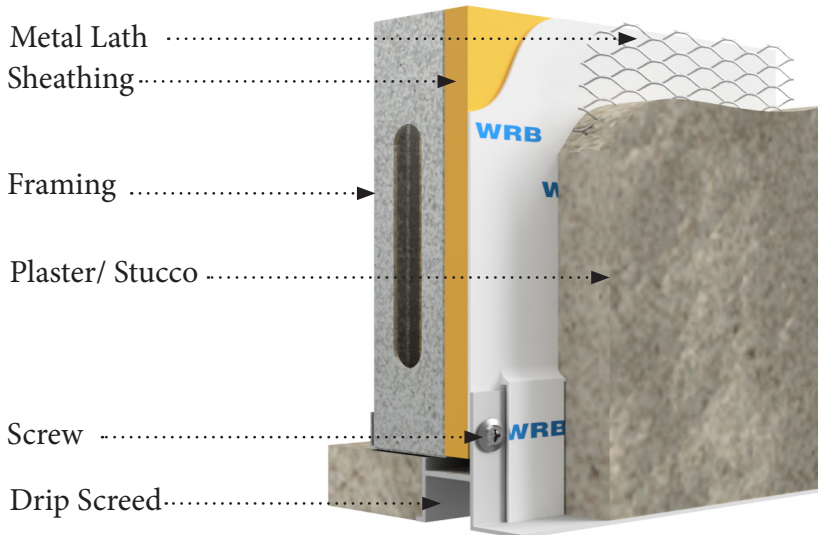
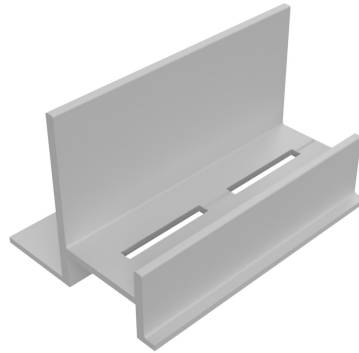
DRIP SCREED ID CHART



ID	DIM A	DIM B	DIM C	DIM D
DS 875-50-875	7/8"	1/2"	7/8"	2-1/8"
DS 875	7/8"	7/8"	7/8"	2"

CUSTOM SIZES AVAILABLE.

DRIP SCREED OVERVIEW



DESCRIPTION

The DS 875 Drip Screed is the ideal solution for joining fascia and soffit while preventing water stains on the soffit from runoff. It features an industry-standard 7/8" fascia reveal that can accommodate standard 3-coat plaster on the fascia and soffit. The drip joint effectively prevents water blemishes on the soffit & vertical walls of the building.

MATERIAL

MATERIAL: Aluminum Alloy 6063 T5 ASTM: B221, C1047, C1063, C841
THICKNESS: Nominal .050
LENGTH: Standard 10 ft.
FINISH: Standard-Clear anodized Architectural 200R1 Medium Etch AAM32C10A21

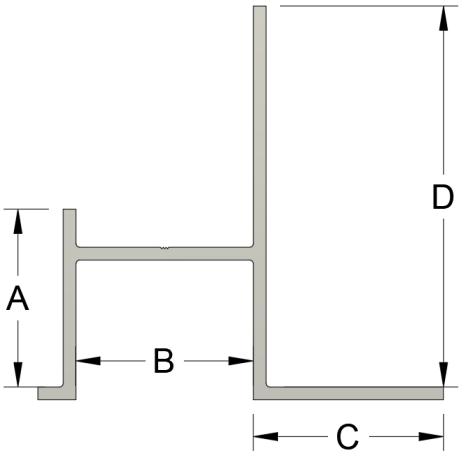
AVAILABLE FINISHES

- Chem Film or 'Mill Finish' for field painting.
- Class 1 Bronze & Black Anodized
- 6500 Different Powder Coat Colors
- Kynar Finish



PLASTER & STUCCO EXTRUSIONS

DRIP SCREED ID CHART



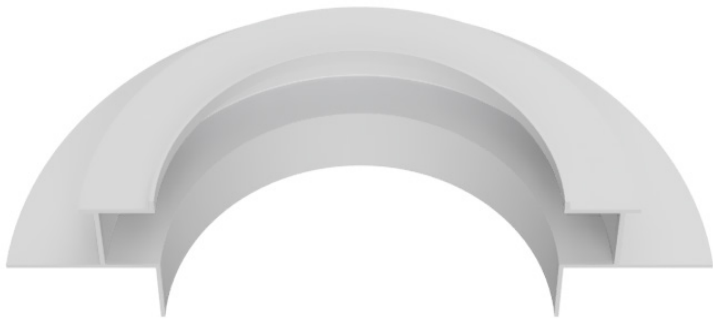
ID	DIM A	DIM B	DIM C	DIM D
DS 875-V-875	13/16"	7/8"	7/8"	2"

CUSTOM SIZES AVAILABLE.

DRIP SCREED RADIUS/CURVING

Brand X Metals, Inc. has in-house capabilities to curve interior and exterior trims for your job specifications.
Drip Screed can be curved in all four directions.

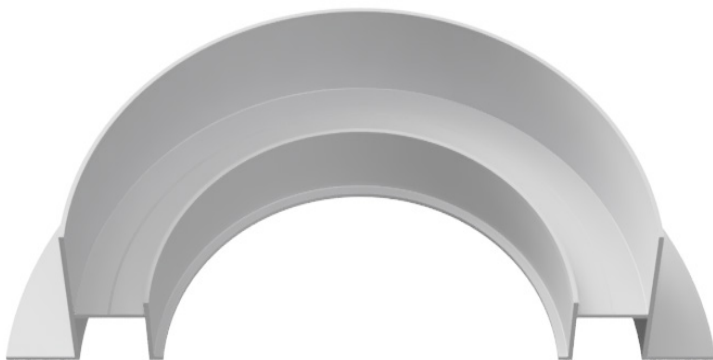
TYPE-1



TYPE-2



TYPE-3



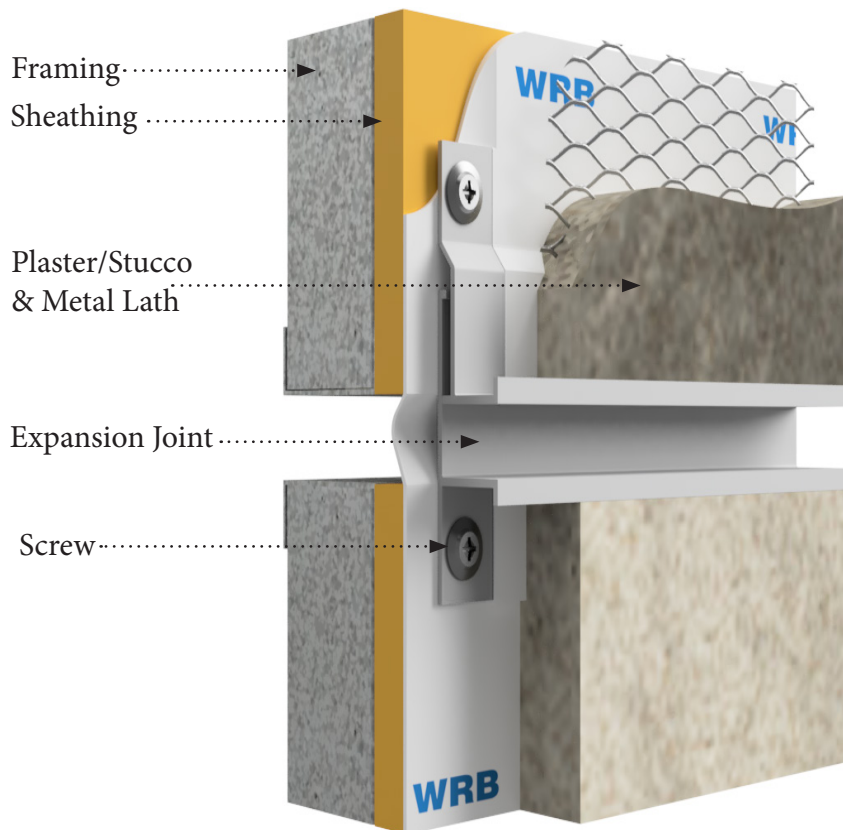
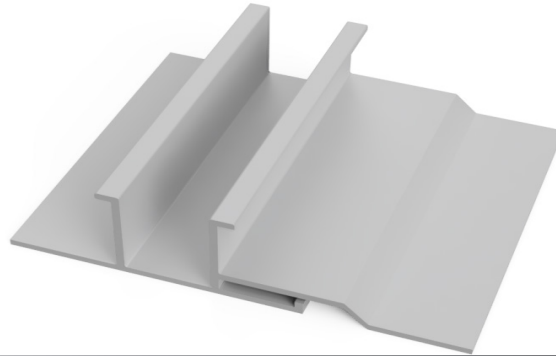
TYPE-4





This page is left blank for printing purposes

EXPANSION JOINT OVERVIEW



DESCRIPTION

The 2-piece Expansion Joint is a versatile architectural trim component designed to prevent cracking caused by movement at floor lines. The channel screed creates a recessed reveal and can be used on horizontal surfaces such as walls and ceilings. However, it is not recommended for use in vertical applications. If used in vertical conditions, the reveal shall be filled with backer rod, and caulking to prevent moisture intrusion.

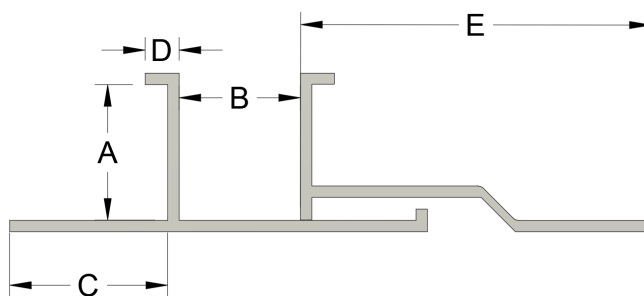
MATERIAL

MATERIAL: Aluminum Alloy 6063 T5 ASTM: B221, C1047, C1063, C841
THICKNESS: Nominal .050
LENGTH: Standard 10 ft.
FINISH: Standard-Clear anodized

AVAILABLE FINISHES

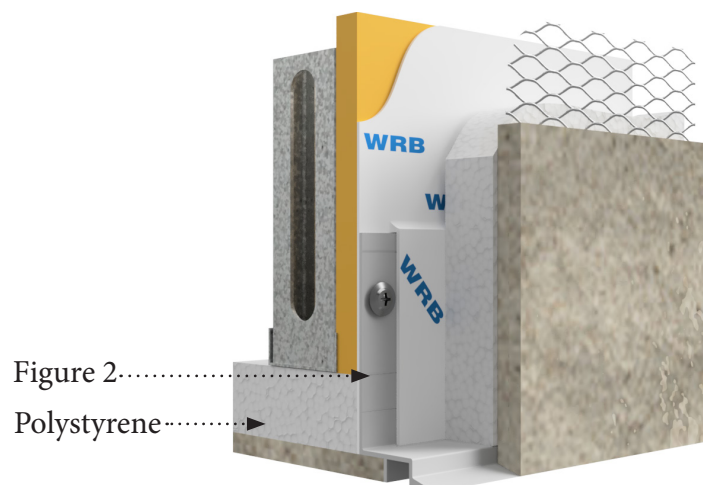
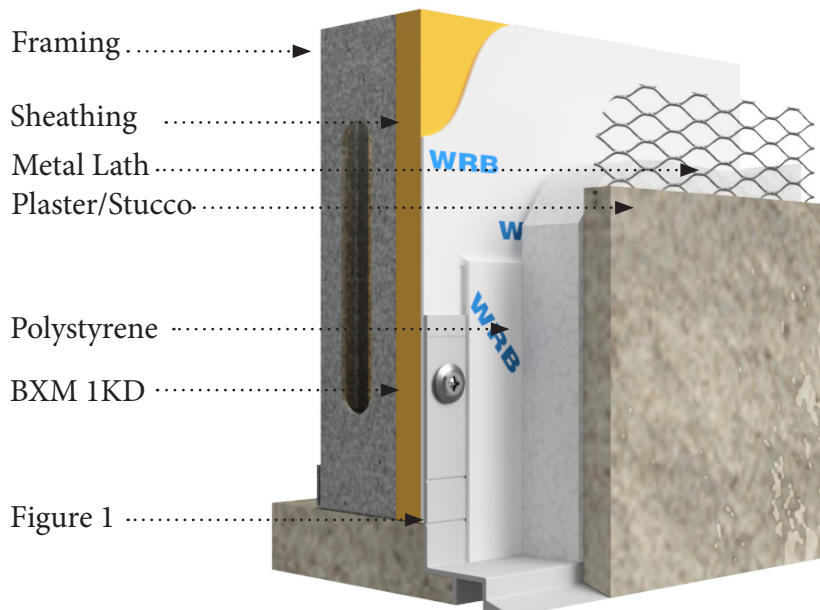
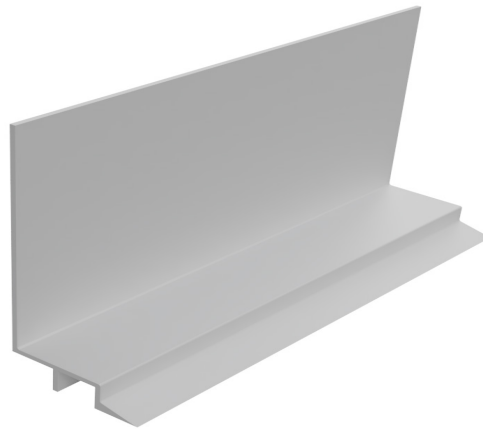
- Chem Film or 'Mill Finish' for field painting.
- Class 1 Bronze & Black Anodized
- 6500 Different Powder Coat Colors
- Kynar Finish

EXPANSION JOINT ID CHART



ID	DIM A	DIM B	DIM C	DIM D	DIM E
PCS 50-50 2PC	1/2"	1/2"	7/8"	3/16"	1-3/4"
PCS 50-75 2PC	1/2"	3/4"	7/8"	3/16"	1-3/4"
PCS 50-100 2PC	1/2"	1"	7/8"	3/16"	1-3/4"
PCS 50-150 2PC	1/2"	1-1/2"	7/8"	3/16"	1-3/4"
PCS 50-200 2PC	1/2"	2"	7/8"	3/16"	1-3/4"
PCS 75-25 2PC	3/4"	1/4"	7/8"	3/16"	1-15/16"
PCS 75-50 2PC	3/4"	1/2"	7/8"	3/16"	1-15/16"
PCS 75-75 2PC	3/4"	3/4"	7/8"	3/16"	1-15/16"
PCS 75-100 2PC	3/4"	1"	7/8"	3/16"	1-15/16"
PCS 75-150 2PC	3/4"	1-1/2"	7/8"	3/16"	1-15/16"
PCS 75-200 2PC	3/4"	2"	7/8"	3/16"	1-15/16"

ONE KOTE DRIP OVERVIEW



DESCRIPTION

Residential Drip Screenshot 1 Kote Drip Screenshot made for residential applications.
1-KD DESCRIPTION: The perfect solution to join fascia and soffits while preventing soffit water stains from runoff. The one coat Drip Screenshot has a 1/2" reveal and accommodates standard One coat plaster over 1" foam with a 1-3/8" ground. This trim has a unique feature in that it is weep-able on the fascia.
Figure 1: Marker for 7/8" stucco.
Figure 2: Marker for 3/8" stucco.

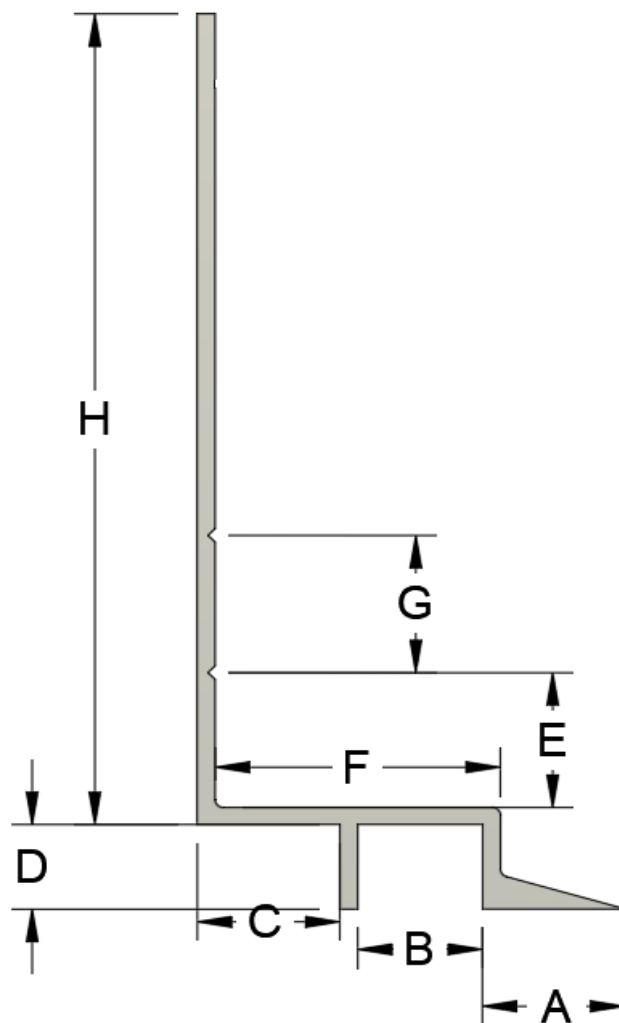
MATERIAL

MATERIAL: Aluminum Alloy 6063 T5 ASTM: B221, C1047, C1063, C841
THICKNESS: Nominal .050
LENGTH: Standard 10 ft.
FINISH: Standard-Clear anodized Architectural 200R1 Medium Etch AAM32C10A21

AVAILABLE FINISHES

- Chem Film or 'Mill Finish' for field painting.
- Class 1 Bronze & Black Anodized
- 6500 Different Powder Coat Colors
- Kynar Finish

ONE KOTE DRIP ID CHART

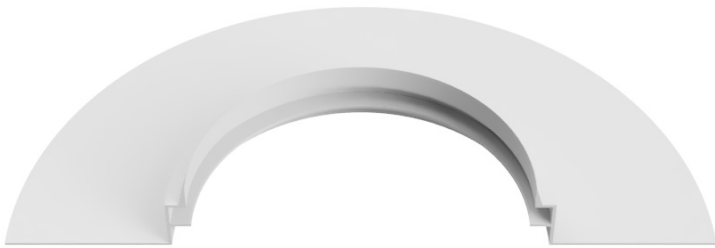


ID	DIM A	DIM B	DIM C	DIM D	DIM E	DIM F	DIM G	DIM H
BXM 1KD 1375-50 DRIP SCREED	1/2"	1/2"	1/2"	5/16"	1/2"	1"	1/2"	3-1/16"

EXPANSION JOINT RADIUS/CURVING

Brand X Metals, Inc. has in-house capabilities to curve interior and exterior trims for your job specifications.
One Kote Drip can be curved in all four directions.

TYPE-1



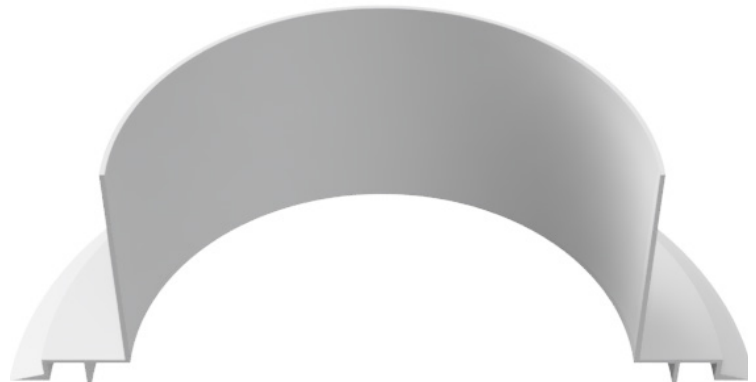
TYPE-2



TYPE-3



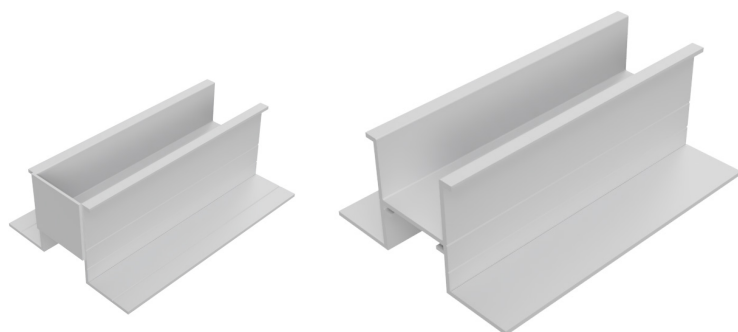
TYPE-4



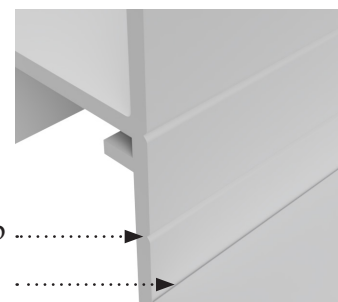


This page is left blank for printing purposes

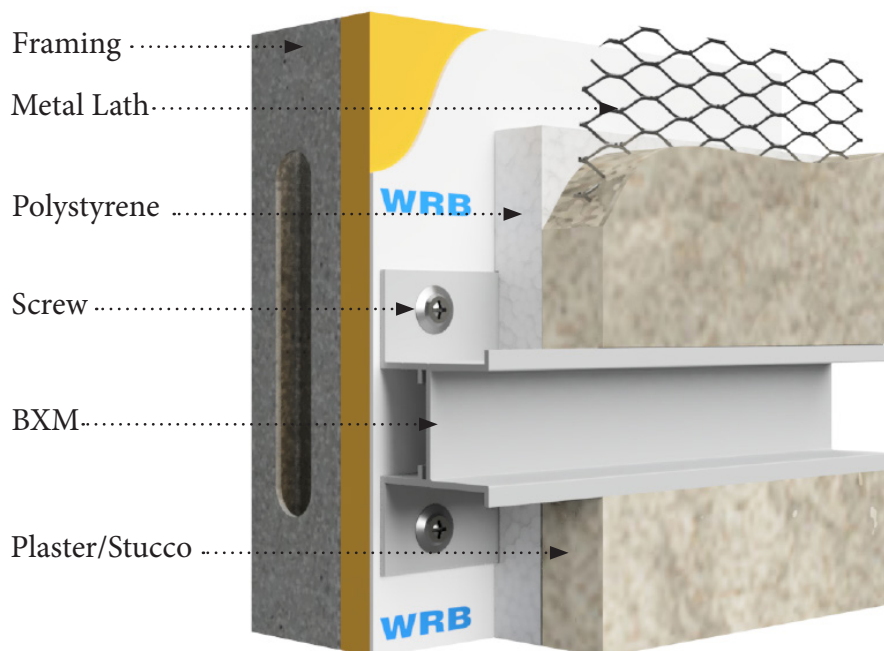
ONE KOTE PLASTER CHANNEL SCREED OVERVIEW



BREAK AWAY LINES



- Industrial Buildup
- Field Fabrication



DESCRIPTION

This plaster channel screed is the perfect solution for creating a smooth and level surface for one kote plaster. The 1-3/8" ground ensures that the screed is thick enough to support the plaster, and the break away grooves allow for field fabrication and for being able to snap off a portion to get around the industrial build up when butting up against a window.

The break away grooves in this screed make it easy to customize the screed to fit your specific needs. You can snap off a portion of the screed to get around a window or other obstruction, or you can use the grooves to create a custom shape for the screed.

MATERIAL

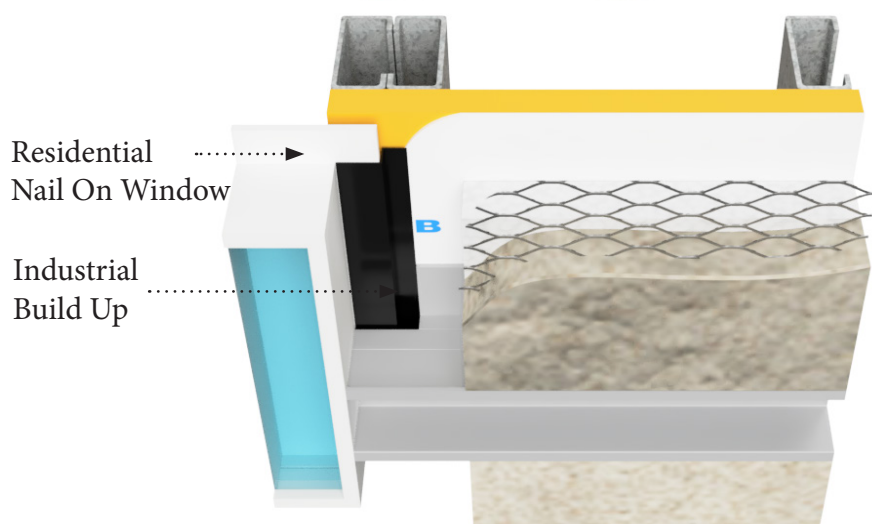
MATERIAL: Aluminum Alloy 6063 T5 ASTM: B221, C1047, C1063, C841
 THICKNESS: Nominal .050
 LENGTH: Standard 10 ft.
 FINISH: Standard-Clear anodized Architectural 200R1 Medium Etch AAM-32C10A21

AVAILABLE FINISHES

- Chem Film or 'Mill Finish' for field painting.
- Class 1 Bronze & Black Anodized
- 6500 Different Powder Coat Colors
- Kynar Finish

OPTIONS

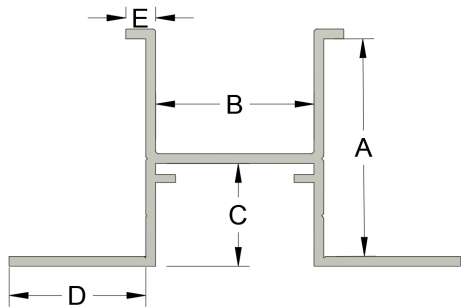
End Caps are available for all sizes of this product. End Caps slide into the channel. See top left of this page.





PLASTER & STUCCO EXTRUSIONS

ONE KOTE PLASTER CHANNEL SCREED ID CHART

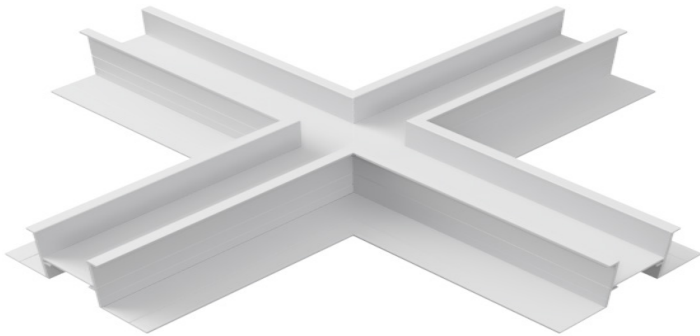


ID	DIM A	DIM B	DIM C	DIM D	DIM E
BXM 1375-75	1-3/8"	3/4"	5/8"	7/8"	3/16"
BXM 1375-100	1-3/8"	1"	5/8"	7/8"	3/16"

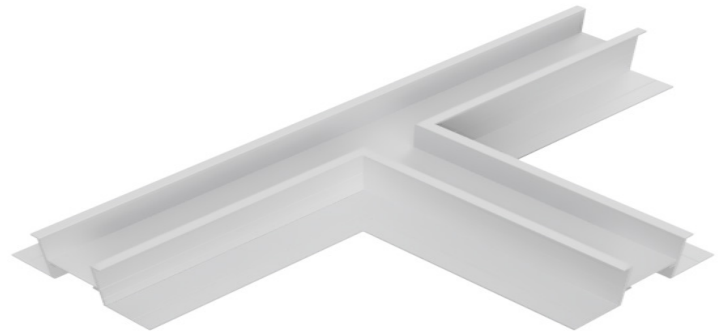
ONE KOTE PLASTER CHANNEL SCREED INTERSECTIONS & CORNERS

The standard leg length of our intersections are 5-3/4 inches. However, we can custom-fabricate to any size leg length to meet your specific needs. This ensures that our products will fit your space perfectly and be easy to install.

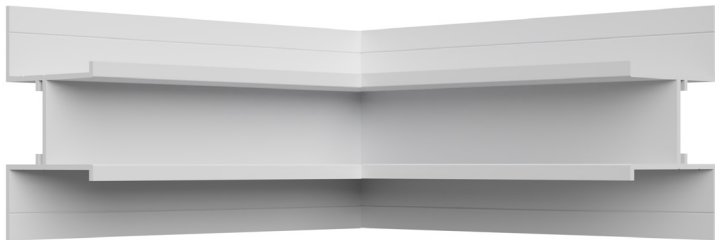
4-WAY



3-WAY



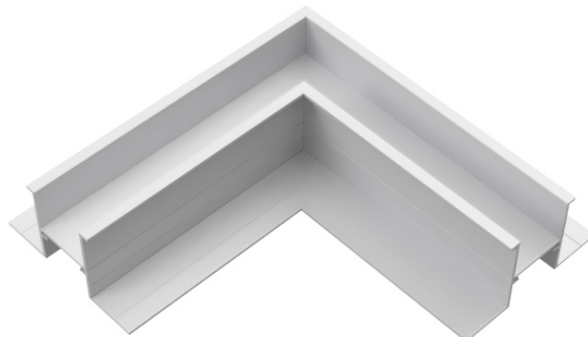
INSIDE CORNER



OUTSIDE CORNER



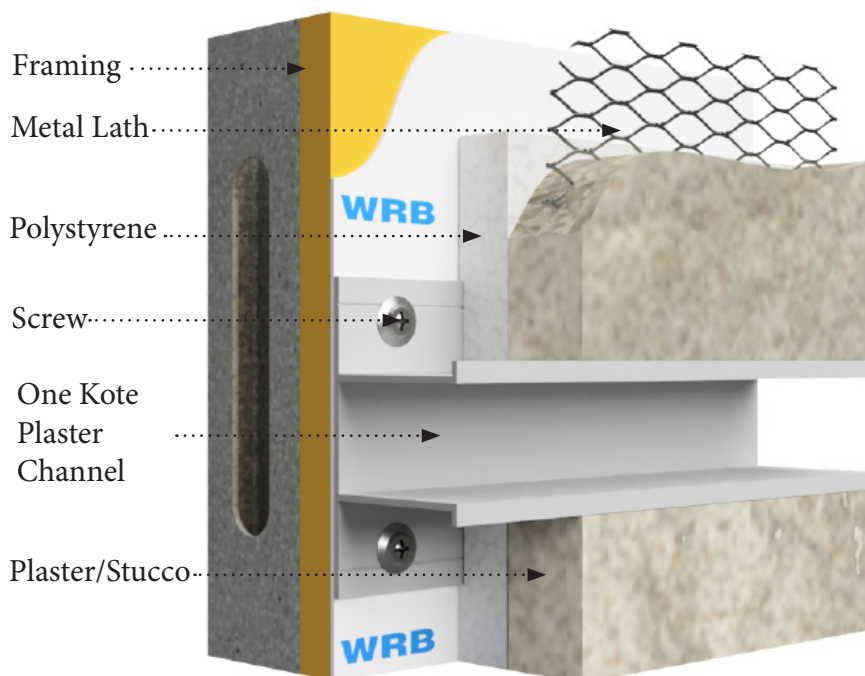
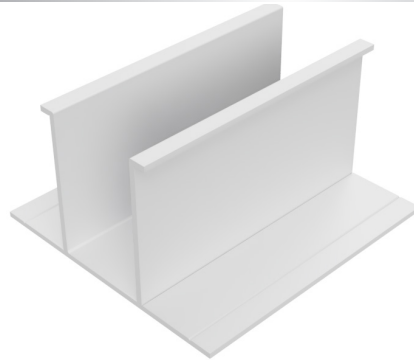
L ANGLE CORNER





This page is left blank for printing purposes

ONE KOTE PLASTER CHANNEL SCREED OVERVIEW



DESCRIPTION

This plaster channel screed is the perfect solution for creating a smooth and level surface for one kote plaster. The 1-1/2" ground ensures that the screed is thick enough to support the plaster, and the channels help to prevent the plaster from cracking. The screed is made from high-quality materials and is easy to install. Simply cut the screed to length and screw it into place. Once the screed is installed, you can apply the plaster.

MATERIAL

MATERIAL: Aluminum Alloy 6063 T5 ASTM: B221, C1047, C1063, C841
THICKNESS: Nominal .050
LENGTH: Standard 10 ft.
FINISH: Standard-Clear anodized Architectural 200R1 Medium Etch AAM-32C10A21

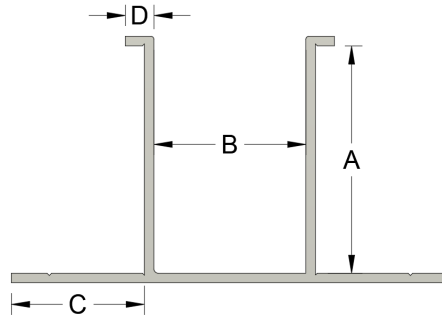
AVAILABLE FINISHES

- Chem Film or 'Mill Finish' for field painting.
- Class 1 Bronze & Black Anodized
- 6500 Different Powder Coat Colors
- Kynar Finish

OPTIONS

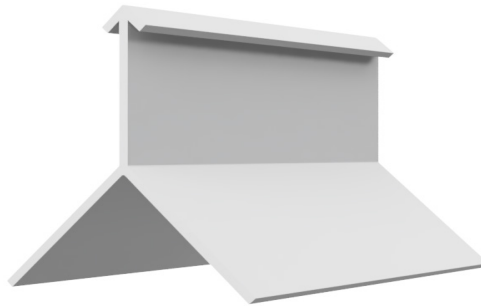
End Caps are available for all sizes of channel screeds. End Caps to fit over the channel.

ONE KOTE PLASTER CHANNEL SCREED ID CHART



ID	DIM A	DIM B	DIM C	DIM D
BXM 150-50	1-1/2"	1/2"	7/8"	3/16"
BXM 150-150	1-1/2"	1-1/2"	7/8"	3/16"

CORNER KEY OVERVIEW



DESCRIPTION

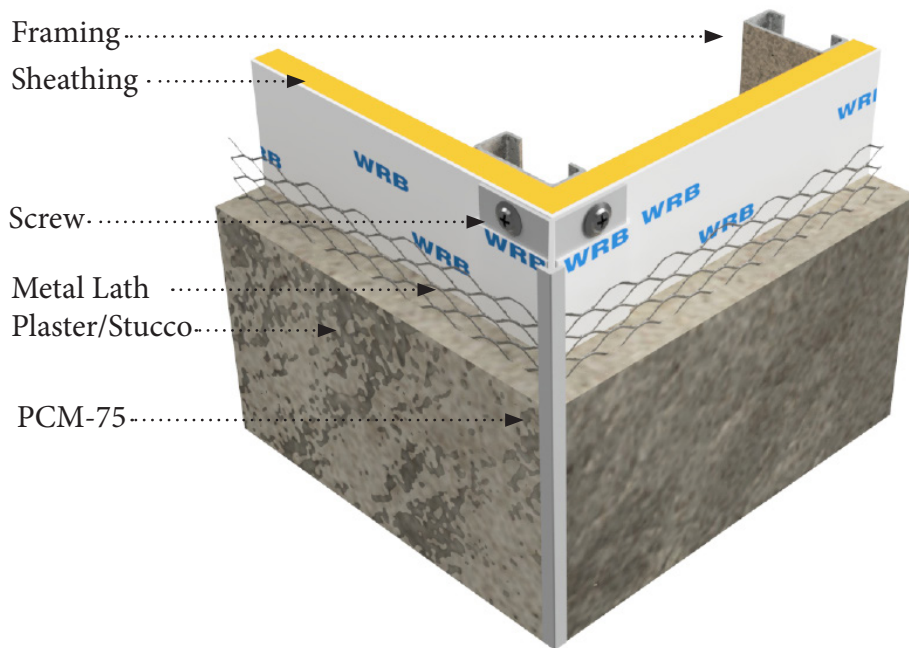
Our Corner Key is another product with a Brand X Metals' Design Advantage. For use as a high traffic corner reinforcement, our PCM trim has a longer nailing flange (1-1/4") which allows the trim to span the typical corner framing when covered by 5/8" sheathing for a more secure attachment.

MATERIAL

MATERIAL: Aluminum Alloy 6063 T5 ASTM: B221, C1047, C1063, C841
THICKNESS: Nominal .050
LENGTH: Standard 10 ft.
FINISH: Standard-Clear anodized
Architectural 200R1 Medium Etch AAM-32C10A21

AVAILABLE FINISHES

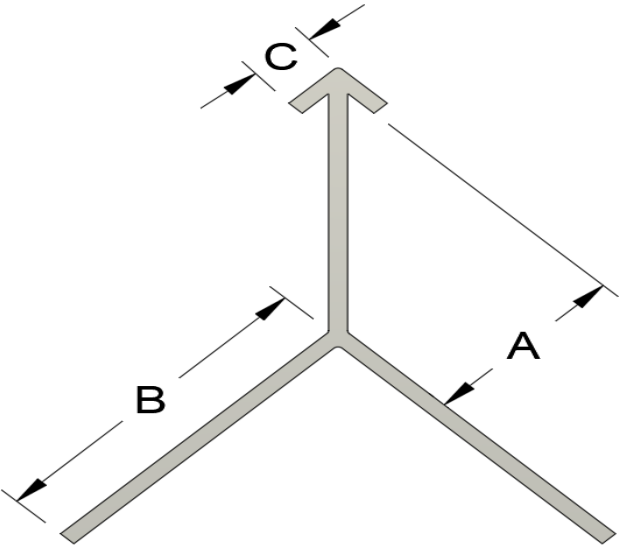
- Chem Film or 'Mill Finish' for field painting.
- Class 1 Bronze & Black Anodized
- 6500 Different Powder Coat Colors
- Kynar Finish





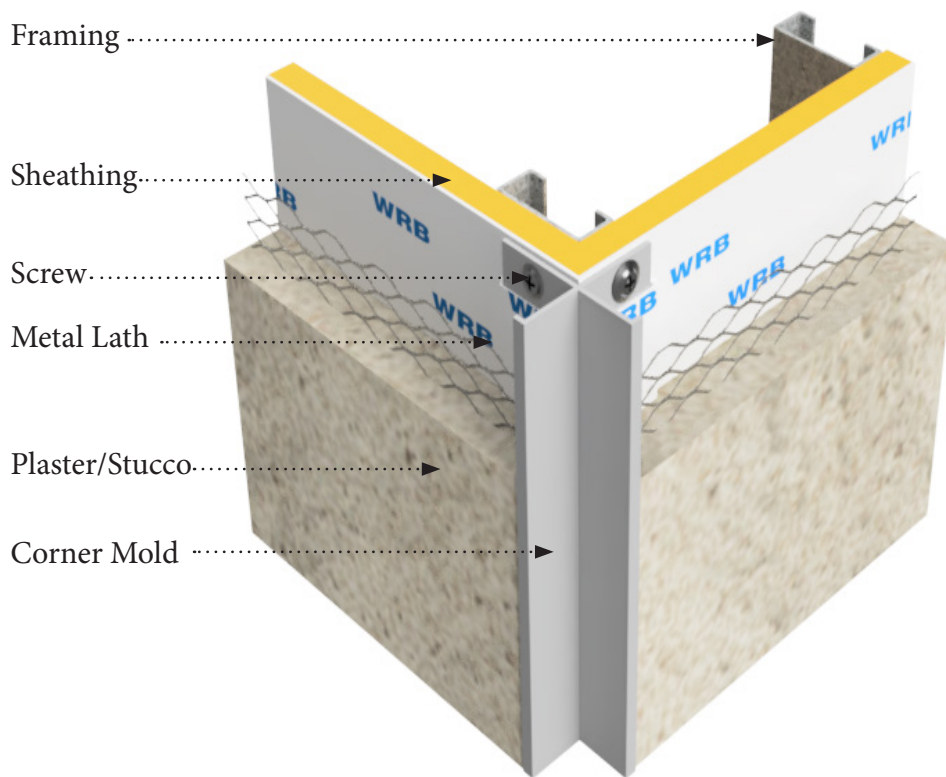
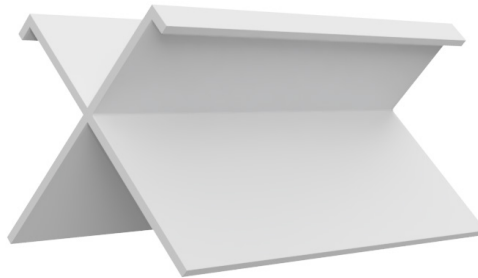
PLASTER & STUCCO EXTRUSIONS

CORNER KEY ID CHART



ID	DIM A	DIM B	DIM C
PCM-75	3/4"	3/16"	3/16"

X MOLD OVERVIEW



DESCRIPTION

The 'X' mold from Brand X Metals is specifically crafted for usage in the corner of two plaster walls. The 'X' Reveal possesses a longer nailing flange, measuring at 1-1/4", in comparison to the standard 7/8" flange, giving it an edge over other brands. The common construction method, which includes 5/8" sheathing over exterior framing, often creates a situation where a 7/8" nail flange is not sufficient for ensuring proper attachment to the corner framing.

MATERIAL

MATERIAL: Aluminum Alloy 6063 T5
ASTM: B221, C1047, C1063, C841
THICKNESS: Nominal .050
LENGTH: Standard 10 ft.
FINISH: Standard-Clear anodized
 Architectural 200R1 Medium Etch AAM-32C10A21

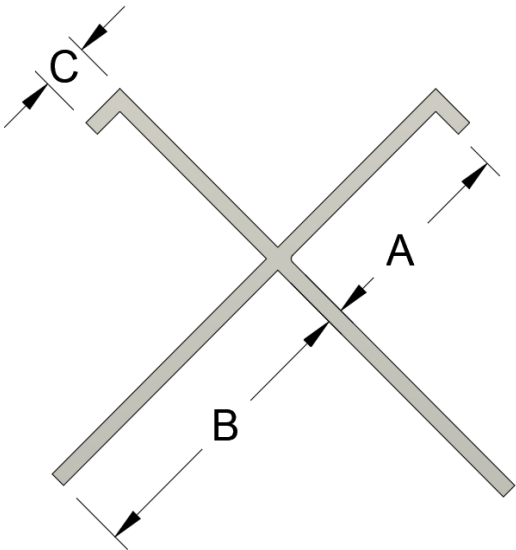
AVAILABLE FINISHES

- Chem Film or 'Mill Finish' for field painting.
- Class 1 Bronze & Black Anodized
- 6500 Different Powder Coat Colors
- Kynar Finish



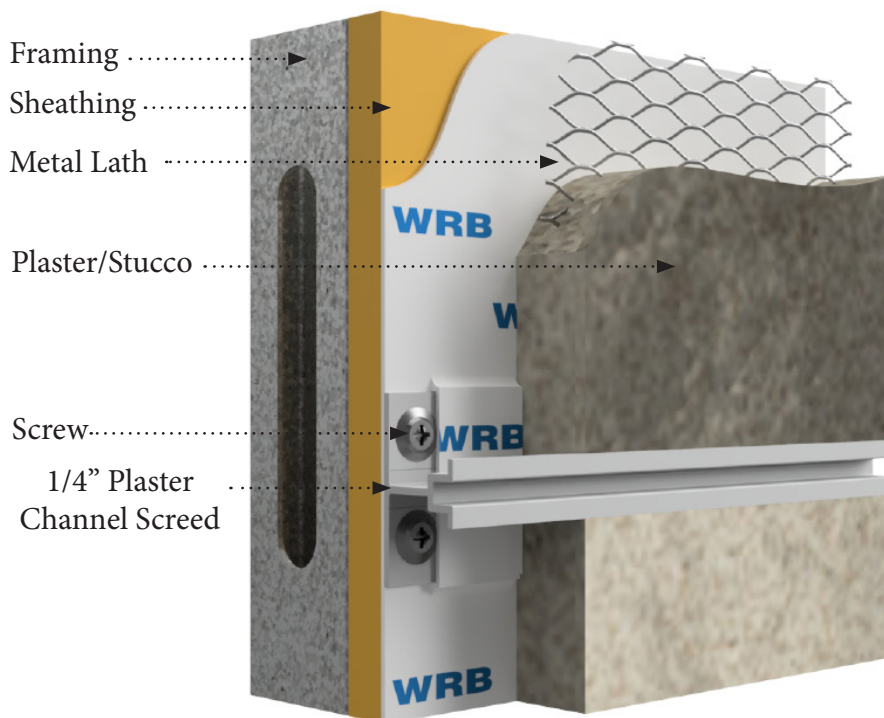
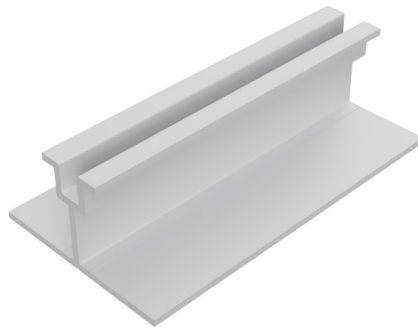
PLASTER & STUCCO EXTRUSIONS

X MOLD ID CHART



ID	DIM A	DIM B	DIM C
XCM-75	3/4"	1-1/4"	3/16"

1/4" PLASTER CHANNEL OVERVIEW



DESCRIPTION

The narrow channel reveal is 1/4" deep by 1/4" wide and acts as a control joint while adding a subtle yet distinctive design element. The trim is available in both a 1/2" and 3/4" ground. This Plaster Channel can be modified into an FPM on request.

MATERIAL

MATERIAL: Aluminum Alloy 6063 T5 ASTM: B221, C1047, C1063, C841
THICKNESS: Nominal .050
LENGTH: Standard 10 ft.
FINISH: Standard-Clear anodized Architectural 200R1 Medium Etch AAM-32C10A21

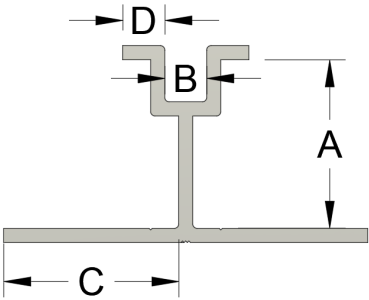
AVAILABLE FINISHES

- Chem Film or 'Mill Finish' for field painting.
- Class 1 Bronze & Black Anodized
- 6500 Different Powder Coat Colors
- Kynar Finish



PLASTER & STUCCO EXTRUSIONS

1/4" PLASTER CHANNEL ID CHART



ID	DIM A	DIM B	C	D
PCS 50-25-25	1/2"	1/4"	7/8"	3/16"
PCS 75-25-25	3/4"	1/4"	7/8"	3/16"

1/4" RADIUS/CURVING

Brand X Metals, Inc. has in-house capabilities to curve interior and exterior trims for your job specifications.
1/4" Plaster Channel Screed can be curved in all three directions.

TYPE-1



TYPE-2



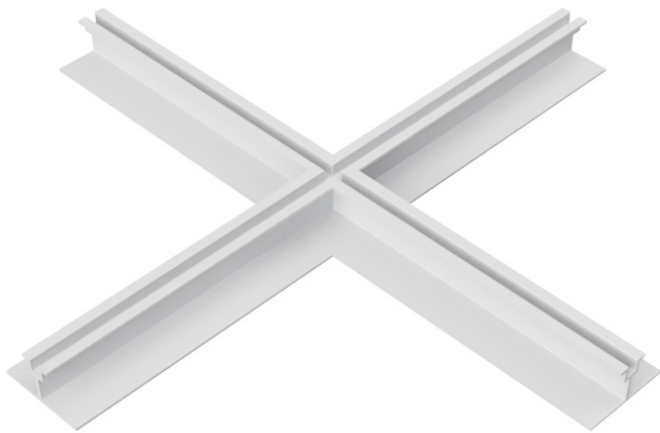
TYPE-3



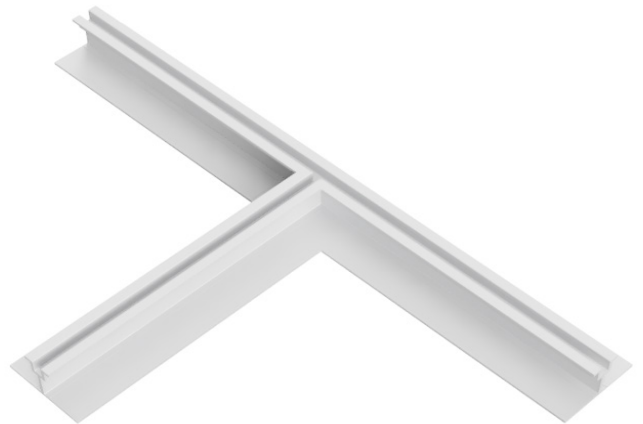
1/4" INTERSECTIONS & CORNERS

The standard leg length of our intersections are 5-3/4 inches. However, we can custom-fabricate to any size leg length to meet your specific needs. This ensures that our products will fit your space perfectly and be easy to install.

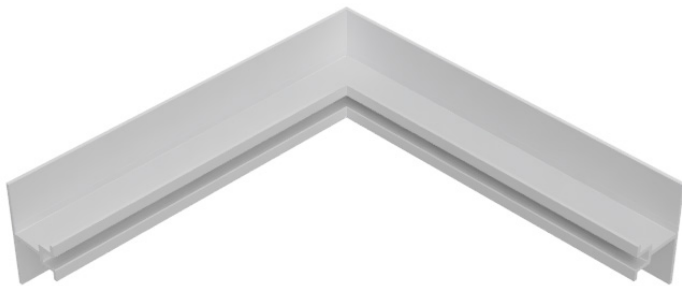
4-WAY



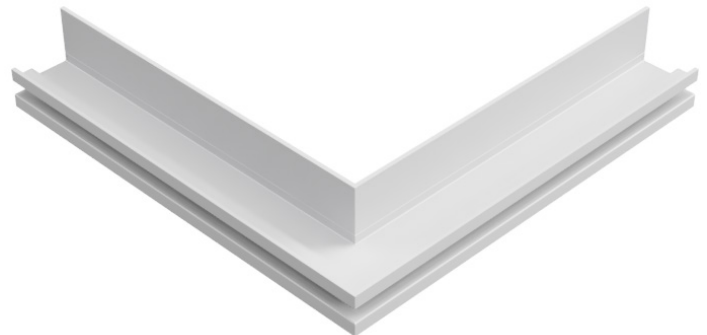
3-WAY



INSIDE CORNER



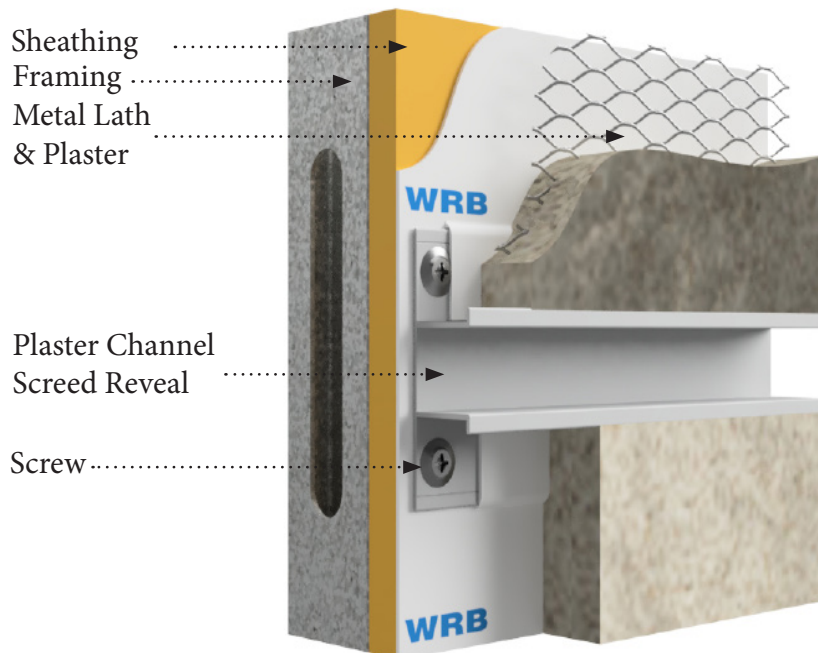
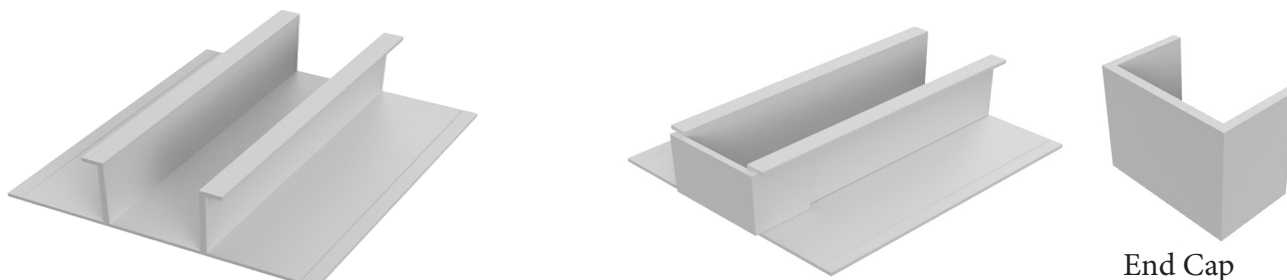
OUTSIDE CORNER



L ANGLE CORNER



PLASTER CHANNEL SCREED REVEAL



EXCLUSIVE BREAK AWAY FLANGE

Breakaway flanges simplify removal of plaster keys and nailing flanges. A small groove enables easy snapping for seamless field fabrication.



DESCRIPTION

Plaster channel screeds, are architectural trim components that offer functional benefits along with their aesthetic appeal. Specifically, channel screeds create a recessed reveal that serves as a control joint, helping to minimize the potential for cracking. These channel screeds are suitable for use both horizontally & vertically on walls and ceilings, & they can be curved for radius applications or vented for soffit vent use. By choosing Plaster channel screeds, construction professionals can enhance the durability and aesthetic appeal of their plaster applications.

MATERIAL

MATERIAL: Aluminum Alloy 6063 T5 ASTM: B221, C1047, C1063, C841
THICKNESS: Nominal .050
LENGTH: Standard 10 ft.
FINISH: Standard-Clear anodized
 Architectural 200R1 Medium Etch AAM-32C10A21

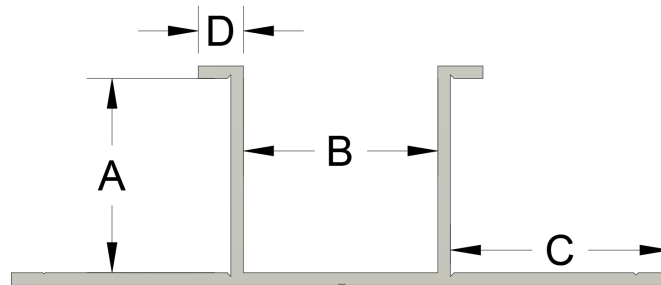
AVAILABLE FINISHES

- Chem Film or 'Mill Finish' for field painting.
- Class 1 Bronze & Black Anodized
- 6500 Different Powder Coat Colors
- Kynar Finish

OPTIONS

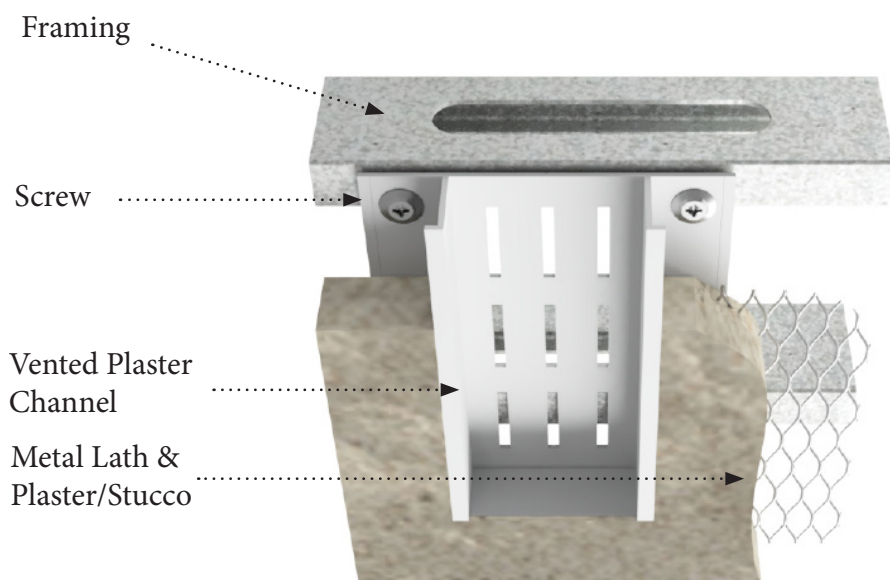
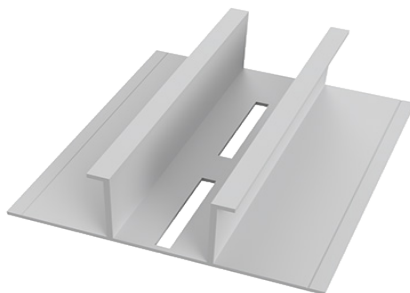
End Caps are available for all sizes of channel screeds. End Caps to fit over the channel.

PLASTER CHANNEL SCREED REVEAL ID



ID	DIM A	DIM B	DIM C	DIM D
PCS 375-25	3/8"	1/4"	7/8"	3/16"
PCS 375-50	3/8"	1/2"	7/8"	3/16"
PCS 375-75	3/8"	3/4"	7/8"	3/16"
PCS 375-100	3/8"	1"	7/8"	3/16"
PCS 375-150	3/8"	1-1/2"	7/8"	3/16"
PCS 50-25	1/2"	1/4"	7/8"	3/16"
PCS 50-50	1/2"	1/2"	7/8"	3/16"
PCS 50-75	1/2"	3/4"	7/8"	3/16"
PCS 50-100	1/2"	1"	7/8"	3/16"
PCS 50-150	1/2"	1-1/2"	7/8"	3/16"
PCS 50-200	1/2"	2"	7/8"	3/16"
PCS 50-300	1/2"	3"	7/8"	3/16"
PCS 625-50	5/8"	1/2"	7/8"	3/16"
PCS 625-75	5/8"	3/4"	7/8"	3/16"
PCS 625-150	5/8"	1-1/2"	7/8"	3/16"
PCS 625-200	5/8"	2"	7/8"	3/16"
PCS 75-50	3/4"	1/2"	7/8"	3/16"
PCS 75-75	3/4"	3/4"	7/8"	3/16"
PCS 75-100	3/4"	1"	7/8"	3/16"
PCS 75-150	3/4"	1-1/2"	7/8"	3/16"
PCS 75-200	3/4"	2"	7/8"	3/16"
PCS 75-250	3/4"	2-1/2"	7/8"	3/16"
PCS 75-300	3/4"	3"	7/8"	3/16"
PCS 75-400	3/4"	4"	7/8"	3/16"

VENTED PLASTER CHANNEL SCREED REVEAL



EXCLUSIVE BREAK AWAY FLANGE

Breakaway flanges simplify removal of plaster keys and nailing flanges. A small groove enables easy snapping for seamless field fabrication.



DESCRIPTION

Designed to maximize efficiency, our aluminum soffit vents allow air to circulate freely, reducing moisture buildup and ensuring a healthy environment. The durable aluminum construction guarantees long-lasting performance, while the seamless integration with plaster channel screeds adds a touch of elegance to your architectural projects.

Whether used in residential or commercial settings, our aluminum plaster channel screed soffit vents provide an effective and aesthetically pleasing solution.

MATERIAL

MATERIAL: Aluminum Alloy 6063 T5 ASTM: B221, C1047, C1063, C841

THICKNESS: Nominal .050

LENGTH: Standard 10 ft.

FINISH: Standard-Clear anodized

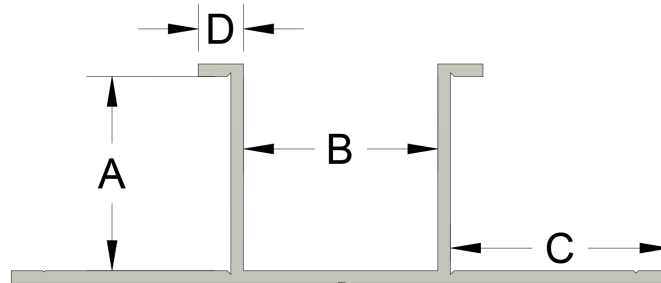
AVAILABLE FINISHES

- Chem Film or 'Mill Finish' for field painting.
- Class 1 Bronze & Black Anodized
- 6500 Different Powder Coat Colors
- Kynar Finish

OPTIONS

End Caps are available for all sizes of channel screeds. End Caps to fit over the channel.

VENTED PLASTER CHANNEL SCREED REVEAL ID

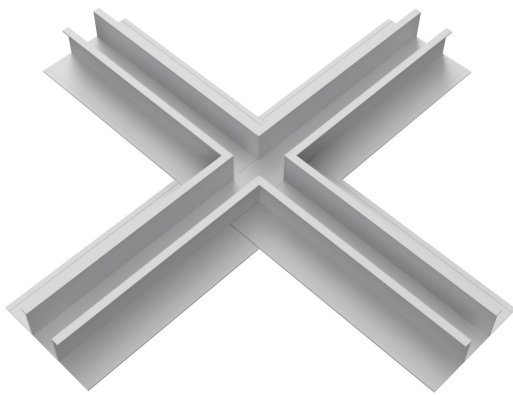


ID	A	B	C	D	VENT SLOT	VENT AREA	% of Area Vented
N.A.	3/8"	1/4"	7/8"	3/16"	NA	NA	NA
PCS 375-V-50	3/8"	1/2"	7/8"	3/16"	1	1 sq. in. / Ln. Ft.	0.15
PCS 375-V-75	3/8"	3/4"	7/8"	3/16"	1	1 sq. in. / Ln. Ft.	0.125
PCS 375-V-100	3/8"	1"	7/8"	3/16"	1	1 sq. in. / Ln. Ft.	0.094
PCS 375-V-150	3/8"	1-1/2"	7/8"	3/16"	2	2 sq. in. / Ln. Ft.	0.125
N.A.	1/2"	1/4"	7/8"	3/16"	NA	NA	NA
PCS 50-V-50	1/2"	1/2"	7/8"	3/16"	1	1 sq. in. / Ln. Ft.	0.15
PCS 50-V-75	1/2"	3/4"	7/8"	3/16"	1	1 sq. in. / Ln. Ft.	0.125
PCS 50-V-100	1/2"	1"	7/8"	3/16"	1	1 sq. in. / Ln. Ft.	0.094
PCS 50-V-150	1/2"	1-1/2"	7/8"	3/16"	2	2 sq. in. / Ln. Ft.	0.125
PCS 50-V-200	1/2"	2"	7/8"	3/16"	3	3 sq. in. / Ln. Ft.	0.141
PCS 50-V-300	1/2"	3"	7/8"	3/16"	5	5 sq. in. / Ln. Ft.	0.143
PCS 625-V-50	5/8"	1/2"	7/8"	3/16"	1	1 sq. in. / Ln. Ft.	0.15
PCS 625-V-75	5/8"	3/4"	7/8"	3/16"	1	1 sq. in. / Ln. Ft.	0.125
PCS 625-V-150	5/8"	1-1/2"	7/8"	3/16"	1	1 sq. in. / Ln. Ft.	0.094
PCS 625-V-200	5/8"	2"	7/8"	3/16"	2	2 sq. in. / Ln. Ft.	0.125
PCS 75-V-50	3/4"	1/2"	7/8"	3/16"	1	1 sq. in. / Ln. Ft.	0.15
PCS 75-V-75	3/4"	3/4"	7/8"	3/16"	1	1 sq. in. / Ln. Ft.	0.125
PCS 75-V-100	3/4"	1"	7/8"	3/16"	1	1 sq. in. / Ln. Ft.	0.094
PCS 75-V-150	3/4"	1-1/2"	7/8"	3/16"	2	2 sq. in. / Ln. Ft.	0.125
PCS 75-V-200	3/4"	2"	7/8"	3/16"	3	3 sq. in. / Ln. Ft.	0.141
PCS 75-V-300	3/4"	3"	7/8"	3/16"	5	5 sq. in. / Ln. Ft.	0.143
PCS 75-V-400	3/4"	4"	7/8"	3/16"	5	5 sq. in. / Ln. Ft.	0.104

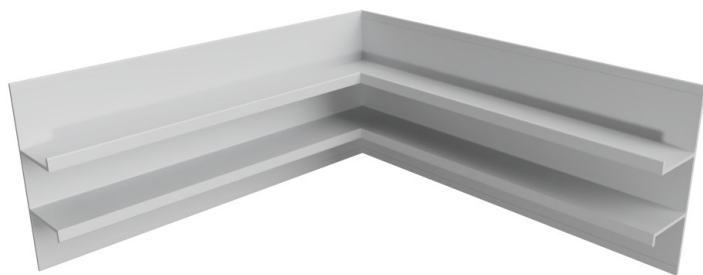
PLASTER REVEAL INTERSECTIONS & CORNERS

The standard leg length of our intersections are 5-3/4 inches . However, we can custom-fabricate to any size leg length to meet your specific needs. This ensures that our products will fit your space perfectly and be easy to install.

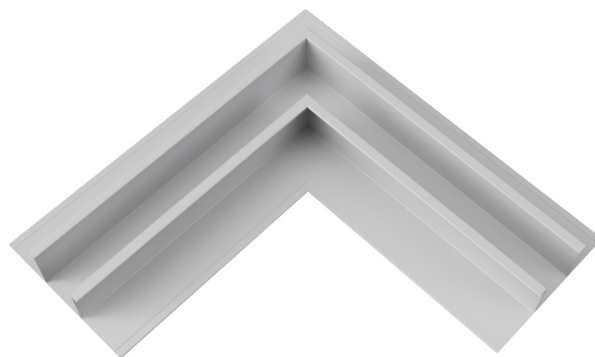
4-WAY



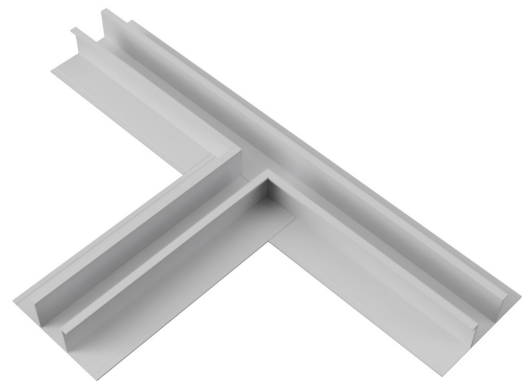
INSIDE CORNER



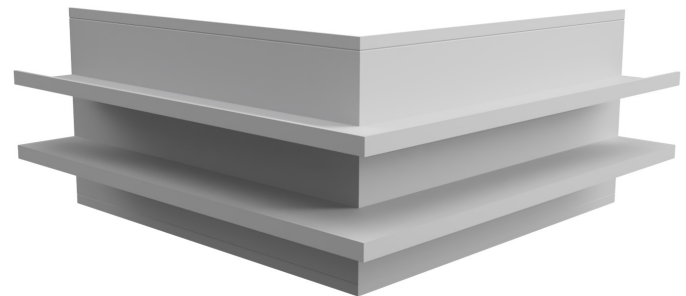
L ANGLE CORNER



3-WAY



OUTSIDE CORNER



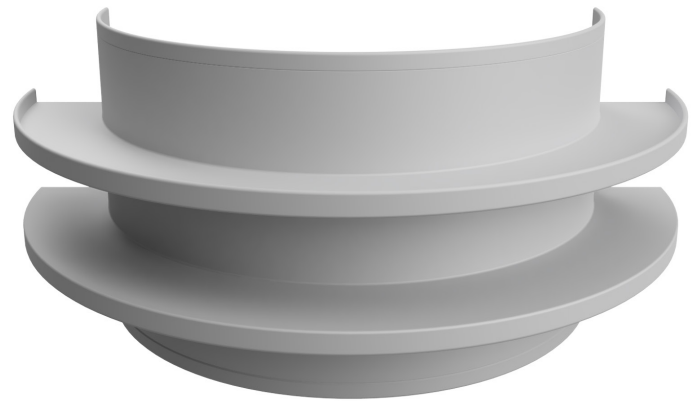
PLASTER REVEAL RADIUS/CURVING

Brand X Metals, Inc. Has in-house capabilities to curve interior and exterior trims for your job specifications.
The PCS Series trims can be curved in three directions.

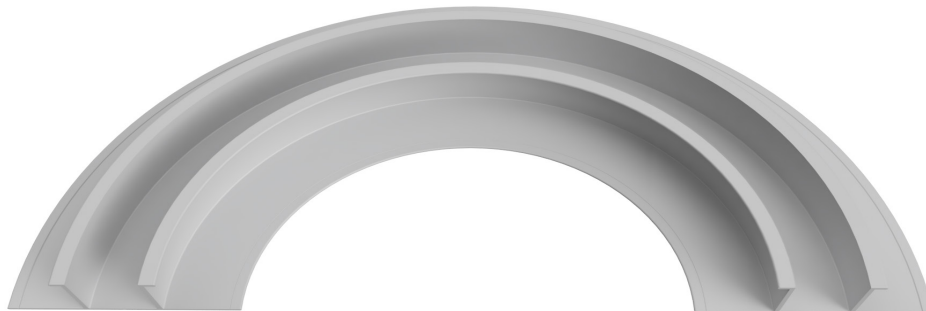
TYPE-1



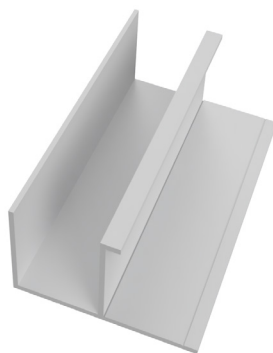
TYPE-2



TYPE-3



PLASTER F MOLD REVEAL OVERVIEW



DESCRIPTION

The 'F' Reveal is a versatile plaster channel trim that facilitates a seamless termination against dissimilar materials, sills, jambs, and ceilings. It can be curved for radius applications and vented for use as a soffit vent to promote air circulation. With its functionality and aesthetic appeal, the 'F' Reveal is an excellent choice for enhancing the durability and appearance of any plaster installation.

MATERIAL

MATERIAL: Aluminum Alloy 6063 T5 ASTM: B221, C1047, C1063, C841
THICKNESS: Nominal .050
LENGTH: Standard 10 ft.
FINISH: Standard-Clear anodized Architectural 200R1 Medium Etch AAM-32C10A21

AVAILABLE FINISHES

- Chem Film or 'Mill Finish' for field painting.
- Class 1 Bronze & Black Anodized
- 6500 Different Powder Coat Colors
- Kynar Finish

OPTIONS

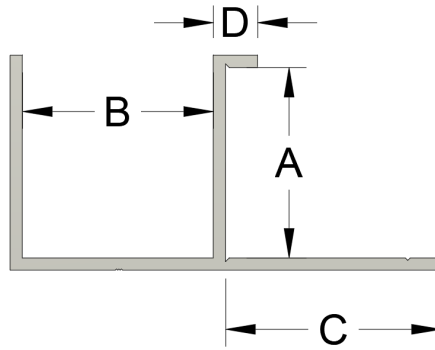
End Caps are available for all sizes of F reveals. End Caps to fit over the channel.

EXCLUSIVE BREAK AWAY FLANGE

Breakaway flanges simplify removal of plaster keys and nailing flanges. A small groove enables easy snapping for seamless field fabrication.

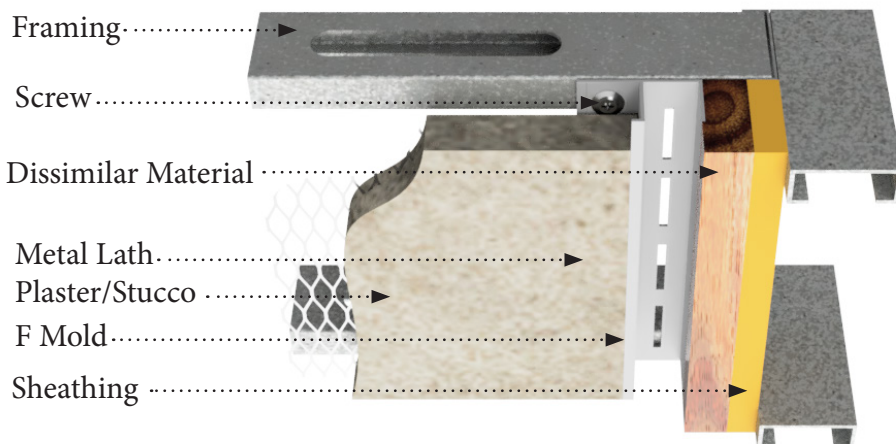
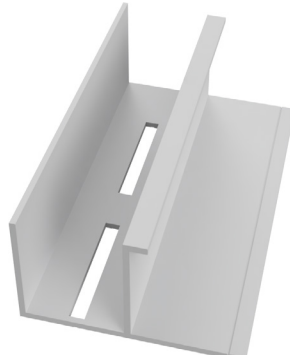


PLASTER F MOLD REVEAL ID CHART



ID	DIM A	DIM B	DIM C	DIM D
FDM 375-50	3/8"	1/2"	7/8"	3/16"
FDM 50-50	1/2"	1/2"	7/8"	3/16"
FDM 50-75	1/2"	3/4"	7/8"	3/16"
FDM 50-100	1/2"	1"	7/8"	3/16"
FDM 50-150	1/2"	1-1/2"	7/8"	3/16"
FDM 50-200	1/2"	2"	7/8"	3/16"
FDM 50-300	1/2"	3"	7/8"	3/16"
FDM 50-400	1/2"	4"	7/8"	3/16"
FDM 625-50	5/8"	1/2"	7/8"	3/16"
FDM 625-75	5/8"	3/4"	7/8"	3/16"
FDM 625-100	5/8"	1"	7/8"	3/16"
FDM 625-150	5/8"	1-1/2"	7/8"	3/16"
FDM 625-200	5/8"	2"	7/8"	3/16"
FPM 75-50	3/4"	1/2"	7/8"	3/16"
FPM 75-75	3/4"	3/4"	7/8"	3/16"
FPM 75-100	3/4"	1"	7/8"	3/16"
FPM 75-150	3/4"	1-1/2"	7/8"	3/16"
FPM 75-200	3/4"	2"	7/8"	3/16"

VENTED PLASTER F MOLD REVEAL OVERVIEW



DESCRIPTION

The 'F' Reveal is a versatile plaster channel trim that facilitates a seamless termination against dissimilar materials, sills, jambs, and ceilings. It can be curved for radius applications and vented for use as a soffit vent to promote air circulation. With its functionality and aesthetic appeal, the 'F' Reveal is an excellent choice for enhancing the durability and appearance of any plaster installation.

MATERIAL

MATERIAL: Aluminum Alloy 6063 T5 ASTM: B221, C1047, C1063, C841
THICKNESS: Nominal .050
LENGTH: Standard 10 ft.
FINISH: Standard-Clear anodized
 Architectural 200R1 Medium Etch AAM-32C10A21

EXCLUSIVE BREAK AWAY FLANGE

Breakaway flanges simplify removal of plaster keys and nailing flanges. A small groove enables easy snapping for seamless field fabrication.



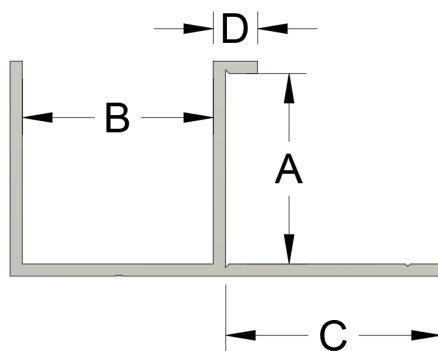
AVAILABLE FINISHES

- Chem Film or 'Mill Finish' for field painting.
- Class 1 Bronze & Black Anodized
- 6500 Different Powder Coat Colors
- Kynar Finish

OPTIONS

End Caps are available for all sizes of F reveals.
 End Caps to fit over the channel.

VENTED PLASTER F MOLD REVEAL ID

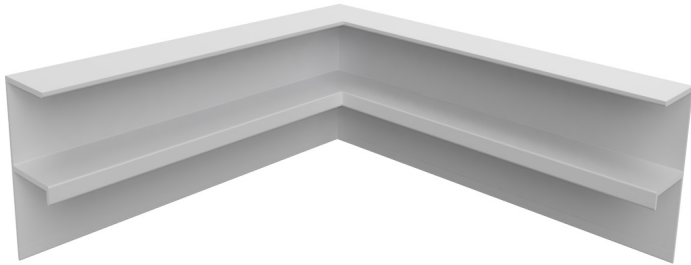


VENTED PT #	A	B	C	E	VENT SLOT	VENT AREA	% of Area Vented
FDM 50-V-50	1/2"	1/2"	7/8"	3/16"	1	1 sq. in. / Ln. Ft.	0.15
FDM 50-V-75	1/2"	3/4"	7/8"	3/16"	1	1 sq. in. / Ln. Ft.	0.125
FPM 50-V-100	1/2"	1"	7/8"	3/16"	1	1 sq. in. / Ln. Ft.	0.094
FDM 50-V-150	1/2"	1-1/2"	7/8"	3/16"	2	2 sq. in./ Ln. Ft.	0.125
FDM 50-V-200	1/2"	2"	7/8"	3/16"	3	3 sq. in./ Ln. Ft.	0.141
FDM 50-V-300	1/2"	3"	7/8"	3/16"	5	5 sq. in./ Ln. Ft.	0.143
FDM 50-V-400	1/2"	4"	7/8"	3/16"	5	5 sq. in./ Ln. Ft.	0.104
FDM 625-50	5/8"	1/2"	7/8"	3/16"	1	1 sq. in. / Ln. Ft.	0.15
FDM 625-75	5/8"	3/4"	7/8"	3/16"	1	1 sq. in. / Ln. Ft.	0.125
FDM 625-100	5/8"	1"	7/8"	3/16"	1	1 sq. in. / Ln. Ft.	0.094
FDM 625-150	5/8"	1-1/2"	7/8"	3/16"	2	2 sq. in./ Ln. Ft.	0.125
FDM 625-200	5/8"	2"	7/8"	3/16"	3	3 sq. in./ Ln. Ft.	0.141
FPM 75-V-50	3/4"	1/2"	7/8"	3/16"	1	1 sq. in. / Ln. Ft.	0.15
FPM 75-V-75	3/4"	3/4"	7/8"	3/16"	1	1 sq. in. / Ln. Ft.	0.125
FPM 75-V-100	3/4"	1"	7/8"	3/16"	1	1 sq. in. / Ln. Ft.	0.094
FPM 75-V-150	3/4"	1-1/2"	7/8"	3/16"	2	2 sq. in./ Ln. Ft.	0.125
FPM 75-V-200	3/4"	2"	7/8"	3/16"	3	3 sq. in./ Ln. Ft.	0.141

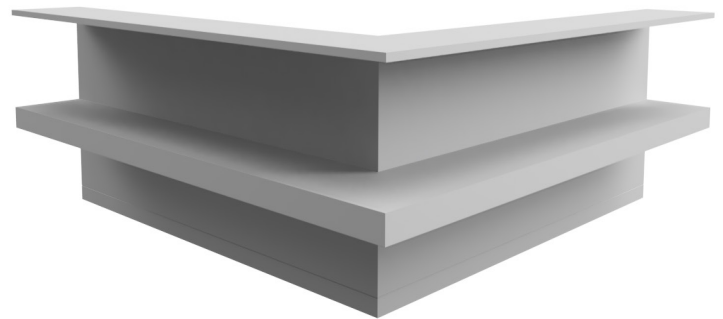
F-MOLD REVEAL INTERSECTIONS & CORNERS

The standard leg length of our intersections are 5-3/4 inches. However, we can custom-fabricate to any size leg length to meet your specific needs. This ensures that our products will fit your space perfectly and be easy to install.

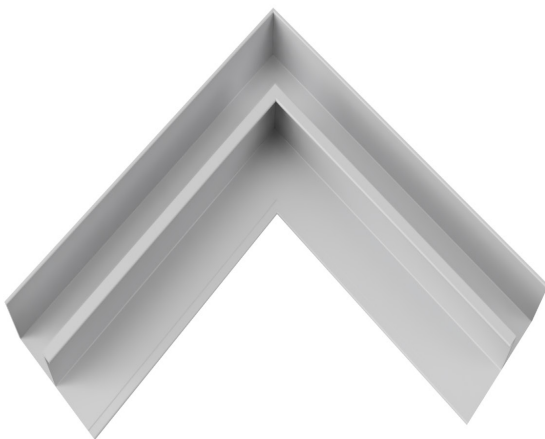
INSIDE CORNER



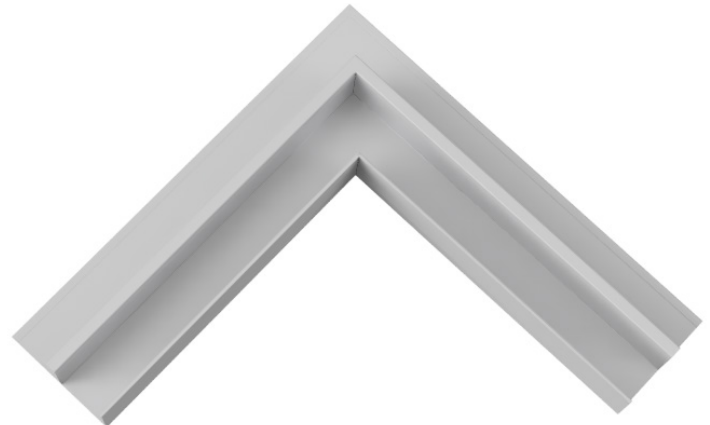
OUTSIDE CORNER



2-WAY L OUTSIDE CORNER



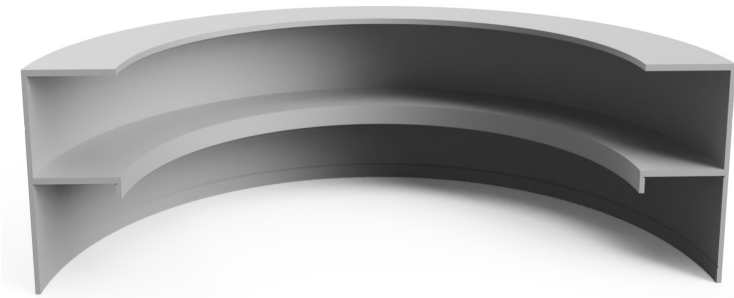
2-WAY L INSIDE CORNER



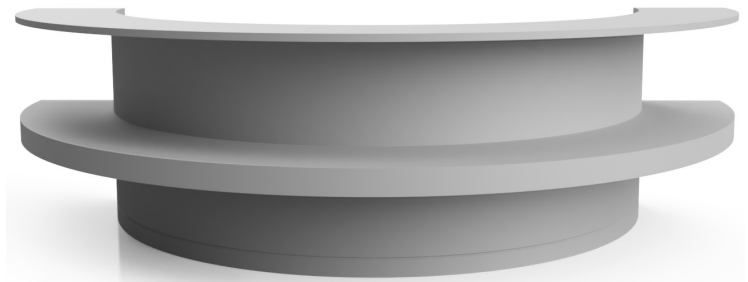
F-MOLD REVEAL RADIUS/CURVING

Brand X Metals, Inc. has in-house capabilities to curve interior and exterior trims for your job specifications.
F Mold (FPM) can be curved in all four directions.

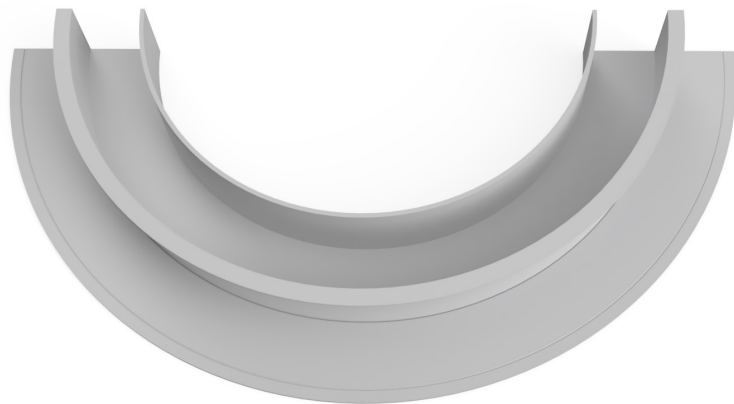
TYPE-1



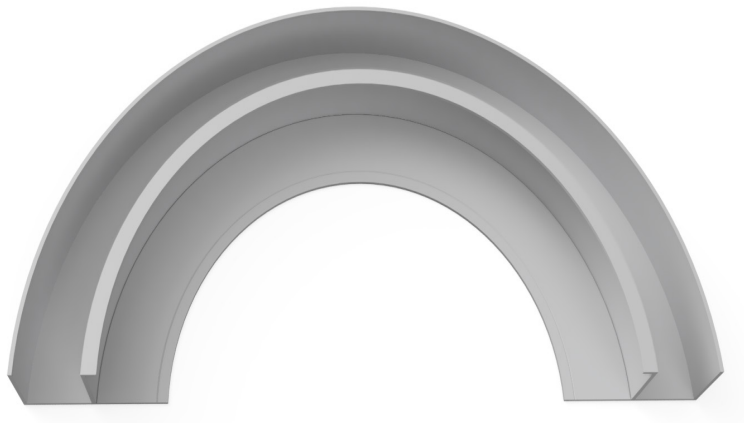
TYPE -2



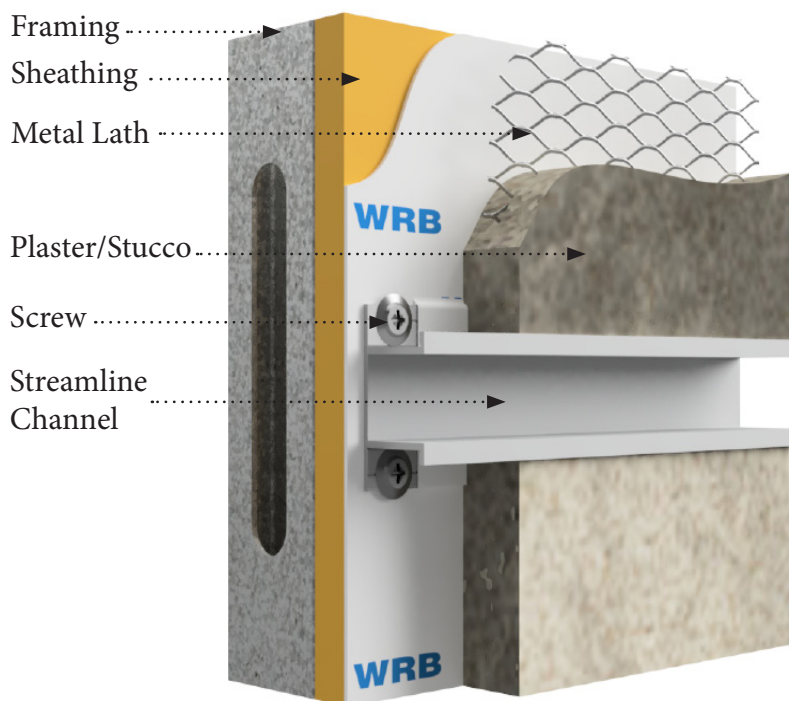
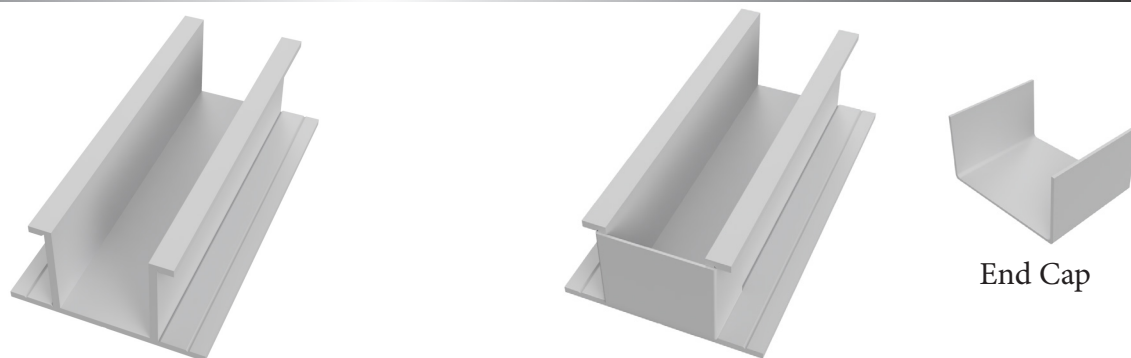
TYPE-3



TYPE-4



STREAMLINE PLASTER CHANNEL SCREED REVEAL OVERVIEW



EXCLUSIVE BREAK AWAY FLANGE

Breakaway flanges simplify removal of plaster keys and nailing flanges. A small groove enables easy snapping for seamless field fabrication.



DESCRIPTION

The Streamline Trim has a shorter nailing flange than the standard PCS trim (3/8" vs. 7/8"). The advantages to the shorter flange are: (1) Cost (2) ensured full embedment (3) moisture control by installing over the lath in horizontal applications (4) Installation method on wood framing allows the installer to adjust the trim when the framing is out of alignment.

MATERIAL

MATERIAL: Aluminum Alloy 6063 T5 ASTM:

B221, C1047, C1063, C841

THICKNESS: Nominal .050

LENGTH: Standard 10 ft.

FINISH: Standard-Clear anodized

Architectural 200R1 Medium Etch AAM-32C10A21

Also available: 'Mill Finish' for field painting and

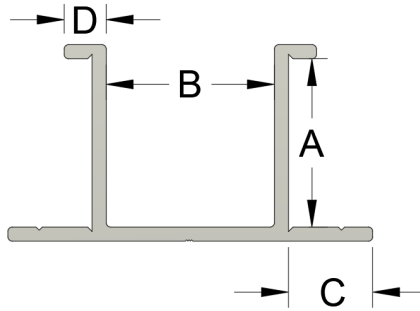
AVAILABLE FINISHES

- Chem Film or 'Mill Finish' for field painting.
- Class 1 Bronze & Black Anodized
- 6500 Different Powder Coat Colors
- Kynar Finish

OPTIONS

End Caps are available for all sizes of channel screeds. End Caps to fit over the channel.

STREAMLINE PLASTER CHANNEL SCREED REVEAL ID

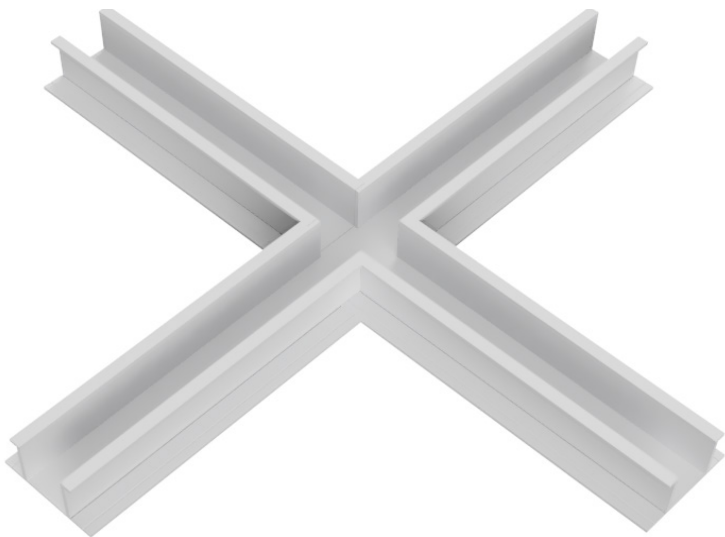


ID	DIM A	DIM B	DIM C	DIM D
SL 50-25	1/2"	1/4"	3/8"	3/16"
SL 50-50	1/2"	1/2"	3/8"	3/16"
SL 50-75	1/2"	3/4"	3/8"	3/16"
SL 50-100	1/2"	1"	3/8"	3/16"
SL 50-150	1/2"	1-1/2"	3/8"	3/16"
SL 50-200	1/2"	2"	3/8"	3/16"
SL 75-50	3/4"	1/2"	3/8"	3/16"
SL 75-75	3/4"	3/4"	3/8"	3/16"
SL 75-100	3/4"	1"	3/8"	3/16"
SL 75-150	3/4"	1-1/2"	3/8"	3/16"

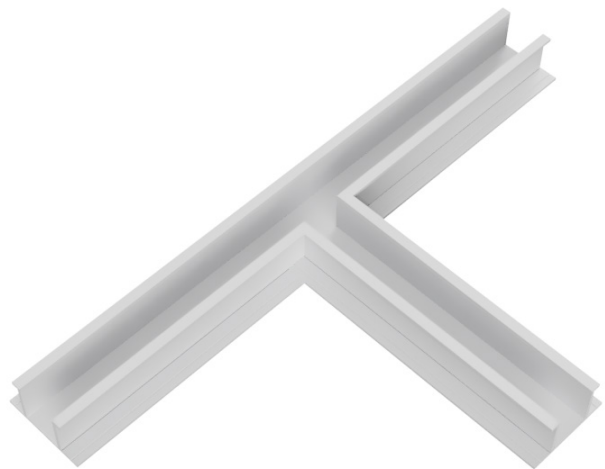
STREAMLINE PLASTER CHANNEL SCREED INTERSECTIONS & CORNERS

The standard leg length of our intersections are 5-3/4 inches. However, we can custom-fabricate to any size leg length to meet your specific needs. This ensures that our products will fit your space perfectly and be easy to install. When intersections are not specified, our exclusive **BREAK AWAY** flanges are the only solution in the industry that allows you to butt these trims in a horizontal

4-WAY



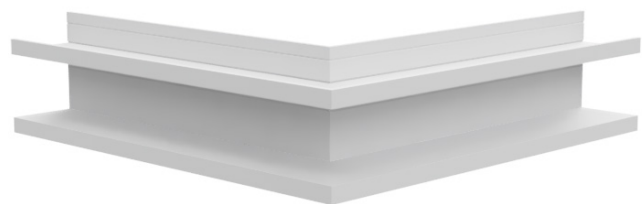
3-WAY



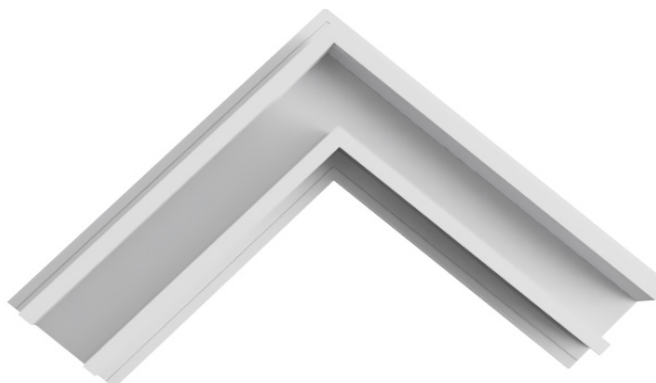
INSIDE CORNER



OUTSIDE CORNER



L ANGLE CORNER



STREAMLINE PLASTER CHANNEL SCREED REVEAL RADIUS/CURVING

Brand X Metals, Inc. has in-house capabilities to curve interior and exterior trims for your job specifications.
The STREAMLINE Series trims can be curved in three directions.

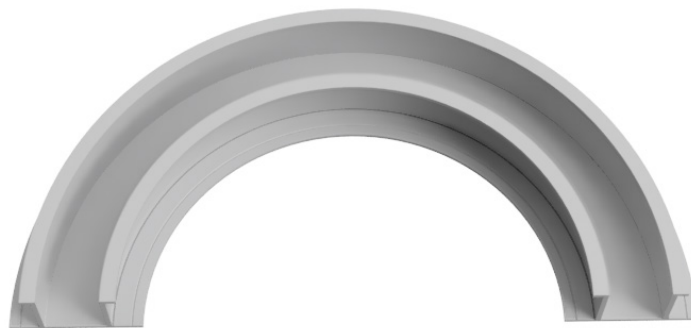
TYPE-1



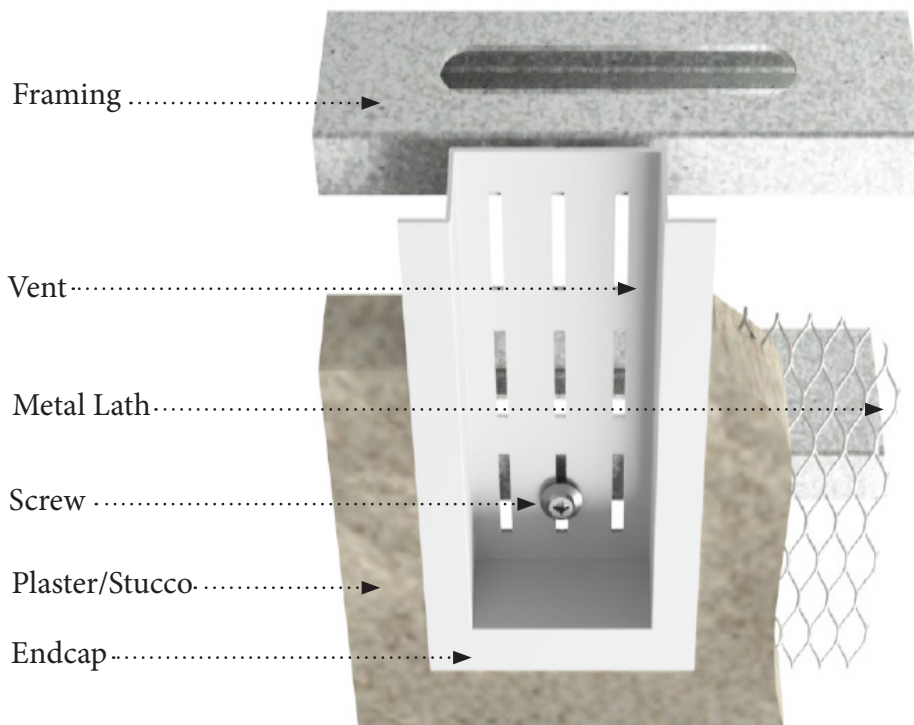
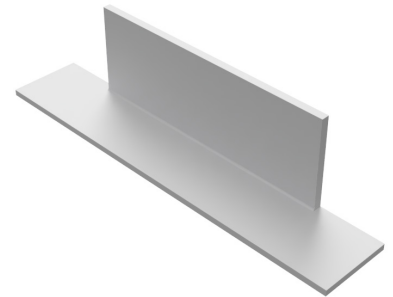
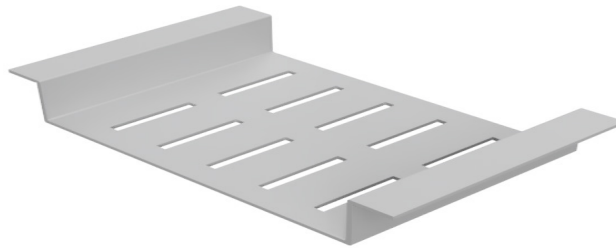
TYPE-2



TYPE-3



CONTINUOUS REMOVABLE SOFFIT VENT OVERVIEW



DESCRIPTION

The Continuous Removal Balcony Soffit Vents are an ideal solution for inspection at the balcony/barrier conversion while providing ventilation and air fluctuation. The removable aluminum soffit vent is easy to access and reinstall, and features 1/2" wide return flanges for a seamless finish. This product is in compliance with the City of Berkeley R1 and R2 Zoning Districts for Exterior Elevated Elements Program (E3), making it a reliable choice for both E.I.F.S and non-E.I.F.S applications.

MATERIAL

MATERIAL: Aluminum Alloy 6063 T5 ASTM: B221, C1047, C1063, C841
THICKNESS: Nominal .050
LENGTH: Standard 10 ft.
FINISH: Standard-Clear anodized Architectural 200R1 Medium Etch AAM-32C10A21

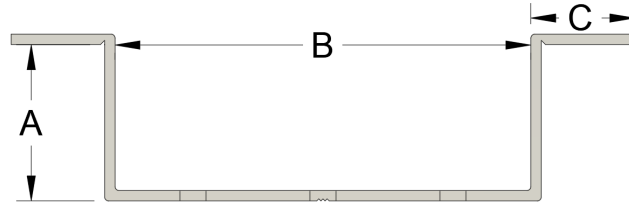
AVAILABLE FINISHES

- Chem Filim or 'Mill Finish' for field painting.
- Class 1 Bronze & Black Anodized
- 6500 Different Powder Coat Colors
- Kynar Finish

OPTIONS

End Caps are available for all sizes of channel screeds. End Caps to fit over the channel or inside the reveal.

CONTINUOUS REMOVABLE SOFFIT VENT ID



ID	DIM A	DIM B	DIM C	VENT SLOTS	VENT AREA	% OF VENT AREA
SV 50-V-200	1/2"	2"	1/2"	3	3 sq. in./ Ln. Ft.	0.141
SV 50-V-300	1/2"	3"	3/4"	5	5 sq. in./ Ln. Ft.	0.143
SV 50-V-400	1/2"	4"	1/2"	5	5 sq. in./ Ln. Ft.	0.143
SV 75-V-200/50	3/4"	2"	1/2"	3	3 sq. in./ Ln. Ft.	0.141
SV 75-V-300/50	3/4"	3"	1/2"	5	5 sq. in./ Ln. Ft.	0.143
SV 75-V-400/50	3/4"	4"	1/2"	5	5 sq. in./ Ln. Ft.	0.143

ELIMINATOR TWO PART CHANNEL SCREED TRIM OVERVIEW



DESCRIPTION

The 2-piece Eliminator Trim is an innovative system that provides a more efficient and effective approach to achieving architectural reveals while minimizing common issues associated with traditional extruded aluminum channel reveals. The system includes a receiver track (Part A) that is fastened directly through the bottom of the channel and a cover plate reveal (Part B) that snaps securely into place. The Eliminator system offers various benefits, such as reduced moisture barrier penetrations, improved protection against moisture intrusion, and greater sustainability. Cracks on nailing flanges are eliminated. Additionally, Part B can be installed after the stucco coat is dry, eliminating the need to mask off the exposed reveal trim and reducing labor costs.

MATERIAL

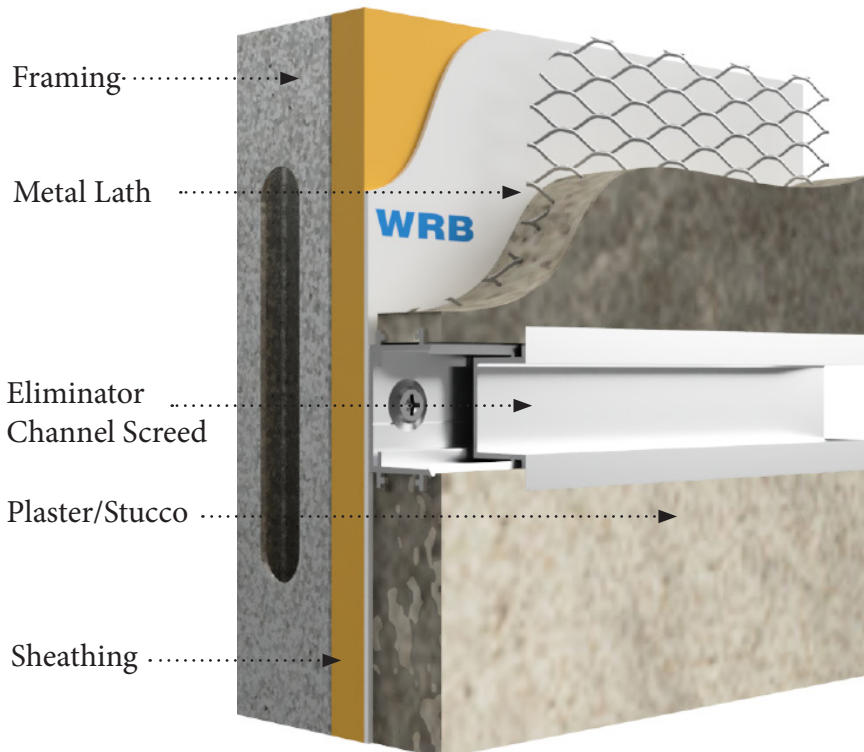
MATERIAL: Aluminum Alloy 6063 T5 ASTM: B221, C1047, C1063, C841
THICKNESS: Nominal .050
LENGTH: Standard 10 ft.
FINISH: Standard-Clear anodized Architectural 200R1 Medium Etch AAM-32C10A21

AVAILABLE FINISHES

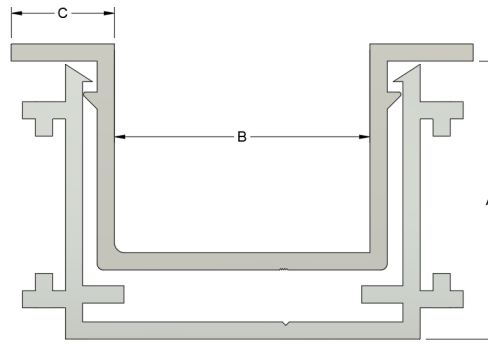
- Chem Film or 'Mill Finish' for field painting.
- Class 1 Bronze & Black Anodized
- 6500 Different Powder Coat Colors
- Kynar Finish

OPTIONS

End Caps are available for all sizes of channel screeds. End Caps to fit over the channel or inside the reveal.



ELIMINATOR TWO PART CHANNEL SCREED TRIM ID CHART

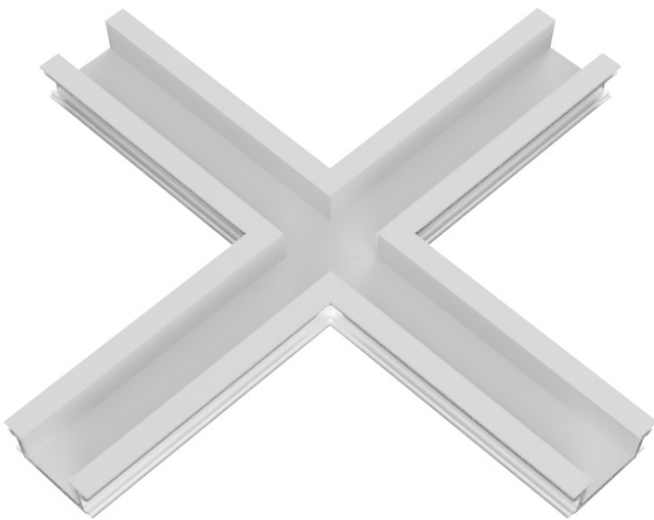


ID	DIM A	DIM B	DIM C
BXM 875-50	7/8"	1/2"	5/16"
BXM 875-75	7/8"	3/4"	5/16"
BXM 875-100	7/8"	1"	5/16"
BXM 875-200	7/8"	2"	5/16"

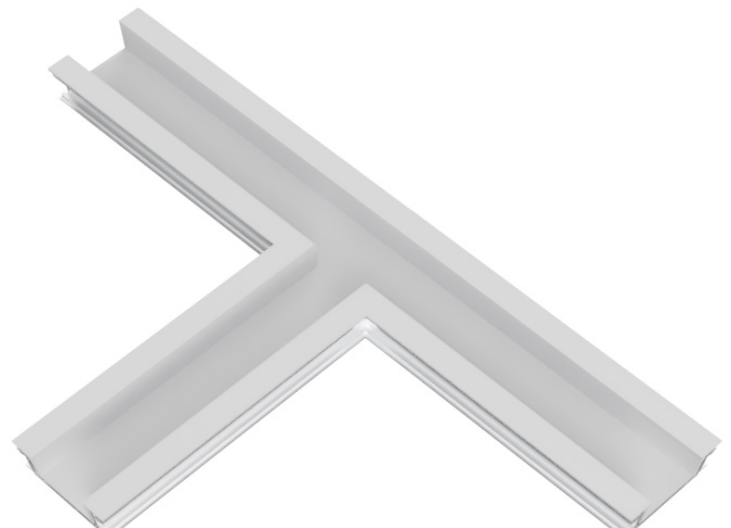
ELIMINATOR TRIM INTERSECTIONS & CORNERS

The standard leg length of our intersections are 5-3/4 inches. However, we can custom-fabricate to any size leg length to meet your specific needs. This ensures that our products will fit your space perfectly and be easy to install.

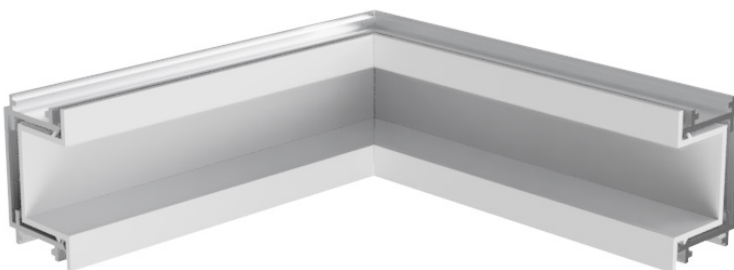
4-WAY



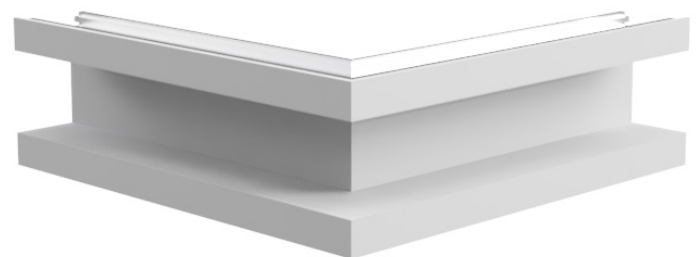
3-WAY



INSIDE CORNER



OUTSIDE CORNER



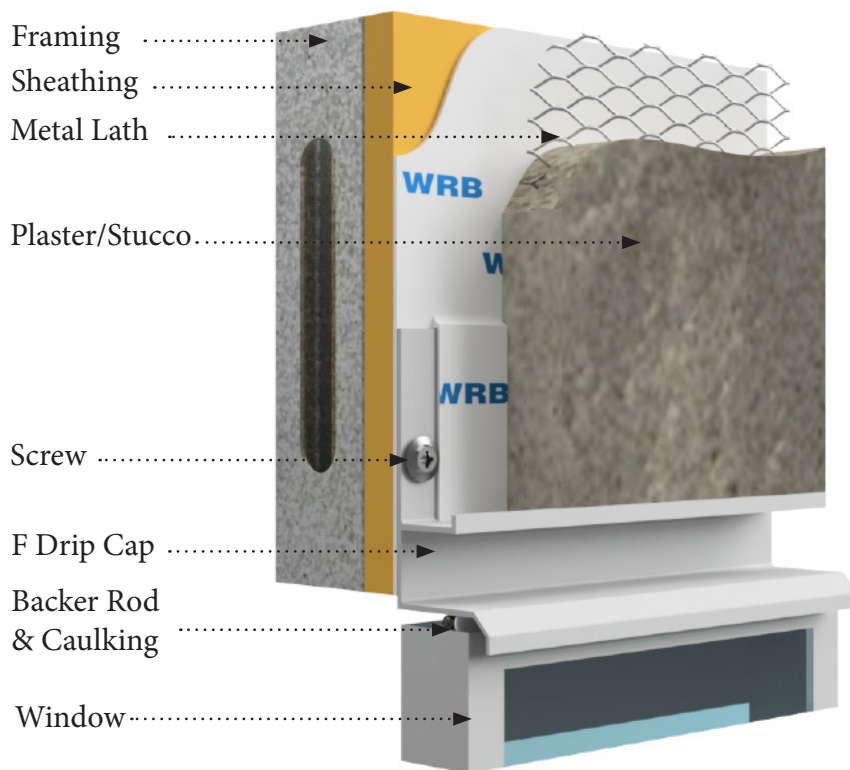
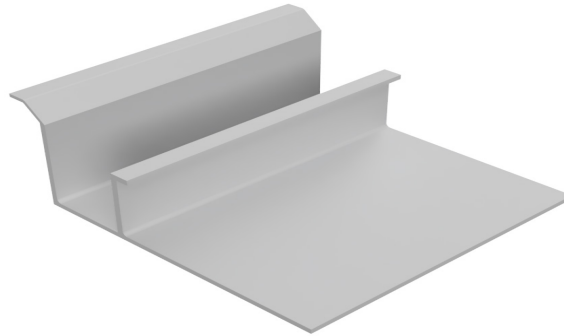
L ANGLE CORNER





This page is left blank for printing purposes

F DRIP CAP OVERVIEW



DESCRIPTION

'F' Drip Cap is a highly suitable option for use over doors and windows to protect from water damage. The design of the 'F' Drip has been enhanced with an elongated nailing flange of 2 inches, which provides additional protection against water intrusion by functioning as a flashing. This makes it an ideal choice for residential and commercial applications.

MATERIAL

MATERIAL: Aluminum Alloy 6063 T5 ASTM: B221, C1047, C1063, C841
THICKNESS: Nominal .050
LENGTH: Standard 10 ft.
FINISH: Standard-Clear anodized Architectural 200R1 Medium Etch AAM-32C10A21

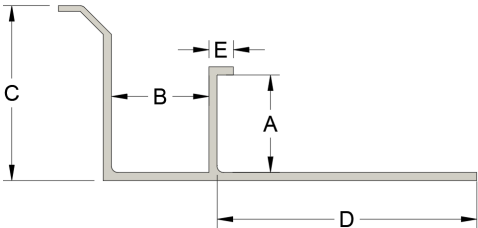
AVAILABLE FINISHES

- Chem Filim or 'Mill Finish' for field painting.
- Class 1 Bronze & Black Anodized
- 6500 Different Powder Coat Colors
- Kynar Finish



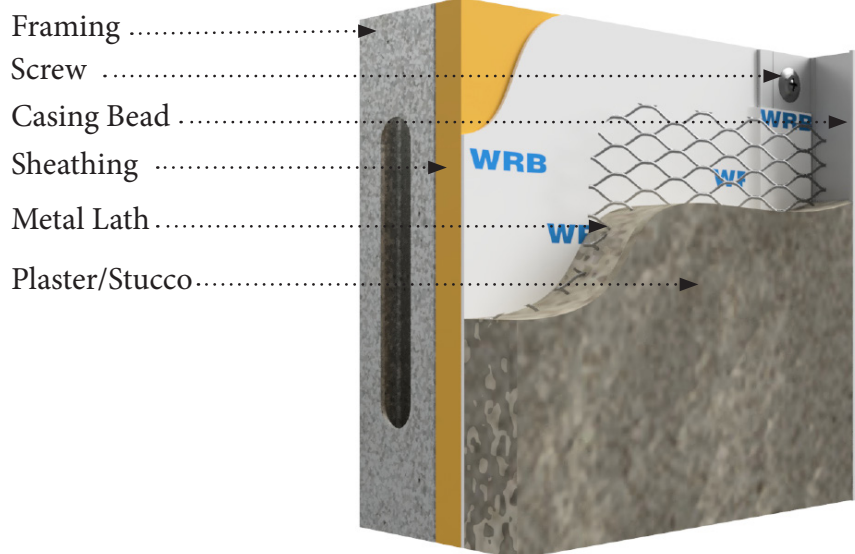
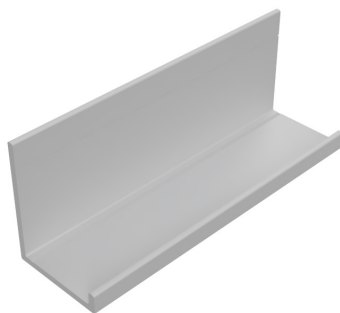
PLASTER & STUCCO EXTRUSIONS

F DRIP CAP ID CHART



ID	DIM A	DIM B	DIM C	DIM D	DIM E
F-DRIP #2221	3/4"	3/4"	1-1/4"	2"	3/16"

J MOLD OVERVIEW



DESCRIPTION

The extruded J-Mold, also known as casing bead, is a versatile trim component used to serve various purposes in construction projects. It can be used as a plaster stop or to encapsulate drywall or a panel system at termination points or dissimilar materials. In addition to its versatility, the extruded J-Mold provides a clean and finished look to the edges of plaster or drywall finishes. The weep holes, when added, allow any trapped moisture to escape, preventing further damage. Overall, the extruded J-Mold is a reliable and efficient solution for finishing and protecting edges in construction projects.

MATERIAL

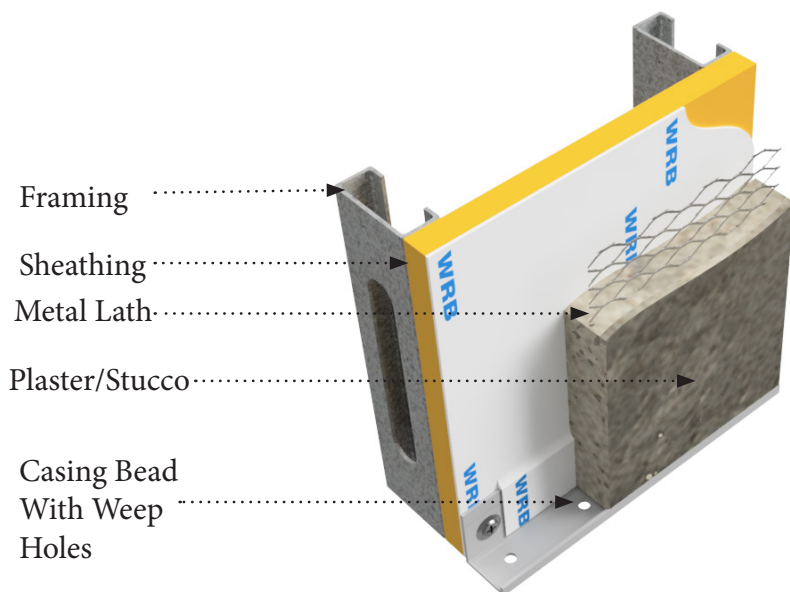
MATERIAL: Aluminum Alloy 6063 T5 ASTM: B221, C1047, C1063, C841
 THICKNESS: Nominal .050
 LENGTH: Standard 10 ft.
 FINISH: Standard-Clear anodized Architectural 200R1 Medium Etch AAM-32C10A21

AVAILABLE FINISHES

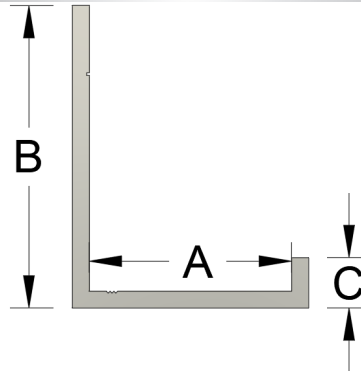
- Chem Film or 'Mill Finish' for field painting.
- Class 1 Bronze & Black Anodized
- 6500 Different Powder Coat Colors
- Kynar Finish

OPTIONS

Weep Holes



CASING BEAD ID CHART



ID	DIM A	DIM B	DIM C
J 50	1/2"	1"	3/16"
J 625	5/8"	1"	3/16"
J 75	3/4"	1"	3/16"
J 75-300	3/4"	3"	3/16"
J 100	1"	1"	3/16"
J 100-300	1W"	3"	3/16"

CUSTOM SIZES AVAILABLE.

CASING BEAD RADIUS/CURVING

Brand X Metals, Inc. has in-house capabilities to curve interior and exterior trims for your job specifications.
Jmold can be curved in all four directions.

TYPE-1



TYPE-2



TYPE-3



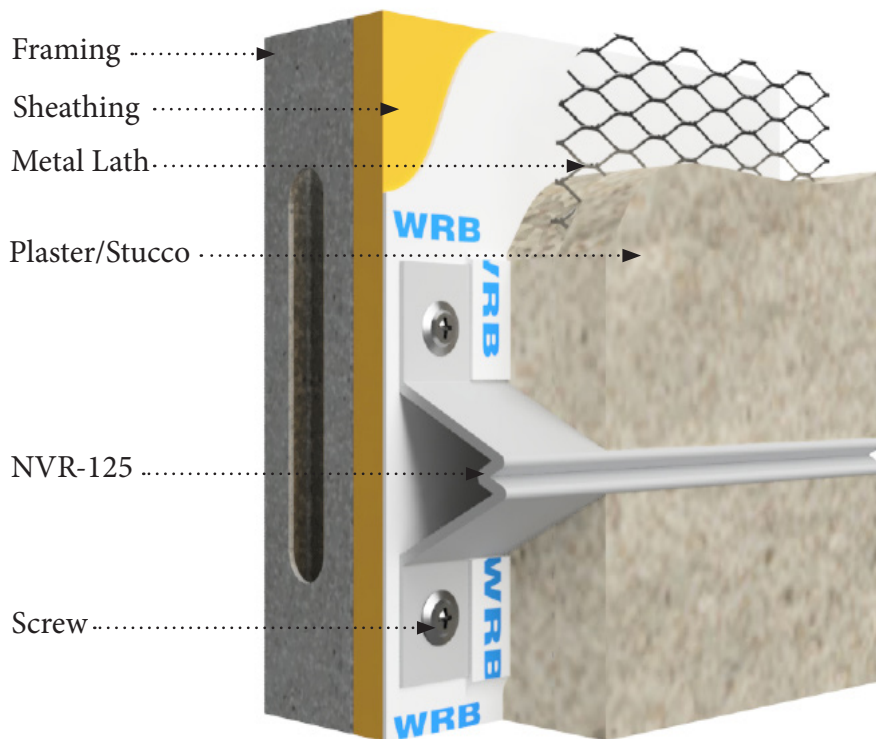
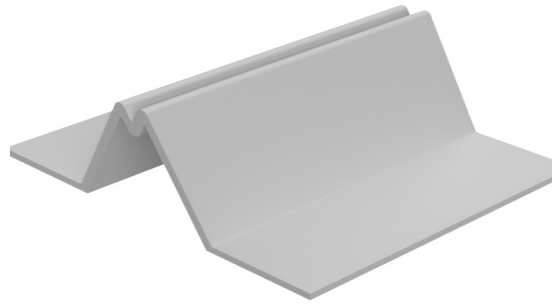
TYPE-4





This page is left blank for printing purposes

NARROW V REVEAL OVERVIEW



DESCRIPTION

The NVR-125 is a narrow revealed for stucco finishes, measuring only 1/8" in width. Despite its small size, it provides effective expansion control, which is crucial in preventing cracking and other damage caused by temperature changes and building movement. This reveal also offers a subtle yet functional detail for architects to incorporate into their designs. The NVR-125 is an excellent option for achieving clean and precise stucco finishes in commercial and residential construction projects.

MATERIAL

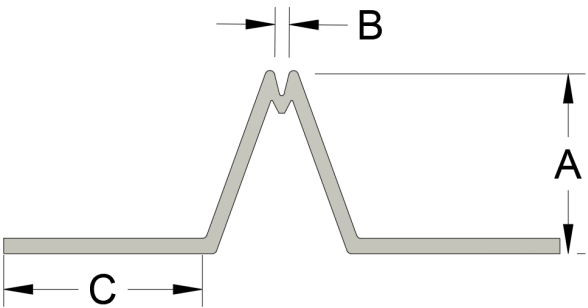
MATERIAL: Aluminum Alloy 6063 T5 ASTM: B221, C1047, C1063, C841
THICKNESS: Nominal .050
LENGTH: Standard 10 ft.
FINISH: Standard-Clear anodized Architectural 200R1 Medium Etch AAM-32C10A21

AVAILABLE FINISHES

- Chem Film or 'Mill Finish' for field painting.
- Class 1 Bronze & Black Anodized
- 6500 Different Powder Coat Colors
- Kynar Finish



NARROW V REVEAL ID CHART



ID	DIM A	DIM B	DIM C
NVR-125	7/8"	1/8"	7/8"

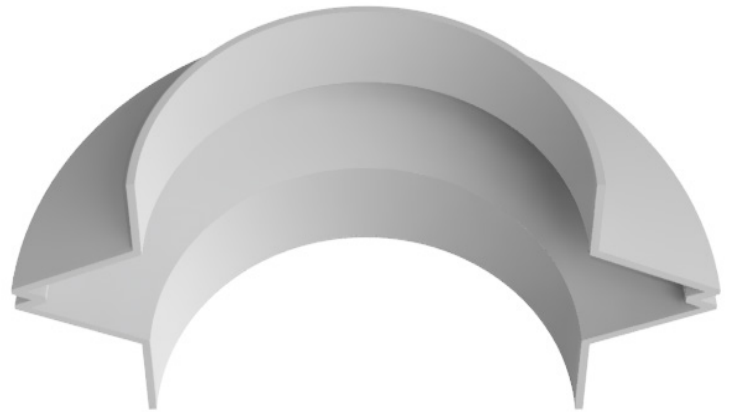
NARROW V REVEAL RADIUS/CURVING

Brand X Metals, Inc. has in-house capabilities to curve interior and exterior trims for your job specifications.
Narrow V Reveal can be curved in all three directions.

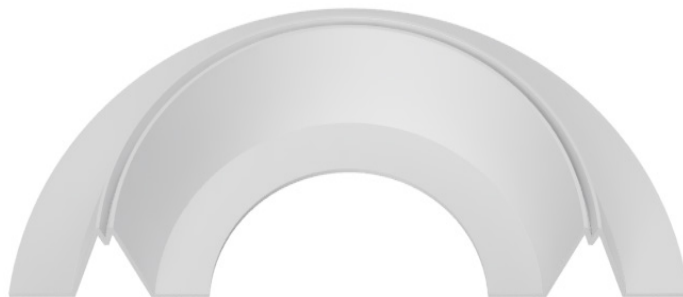
TYPE-1



TYPE-2



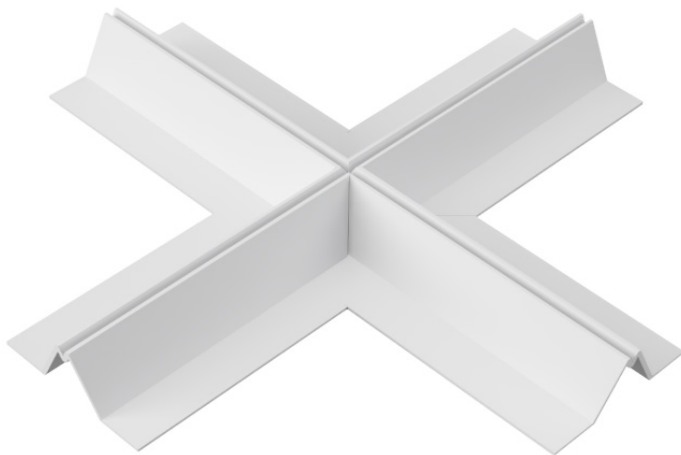
TYPE-3



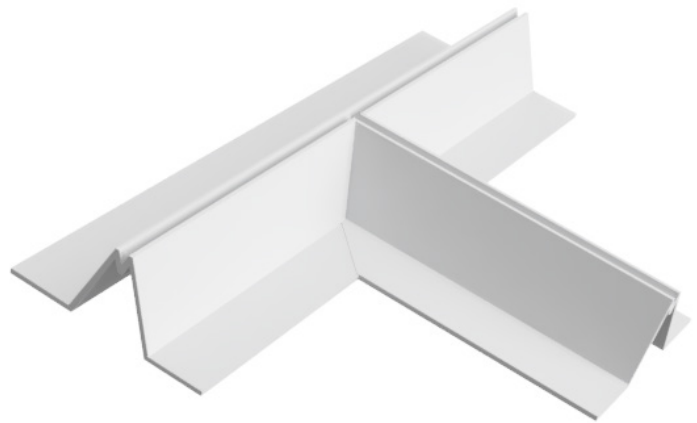
NARROW V REVEAL INTERSECTIONS & CORNERS

The standard leg length of our intersections are 5-3/4 inches. However, we can custom-fabricate to any size leg length to meet your specific needs. This ensures that our products will fit your space perfectly and be easy to install.

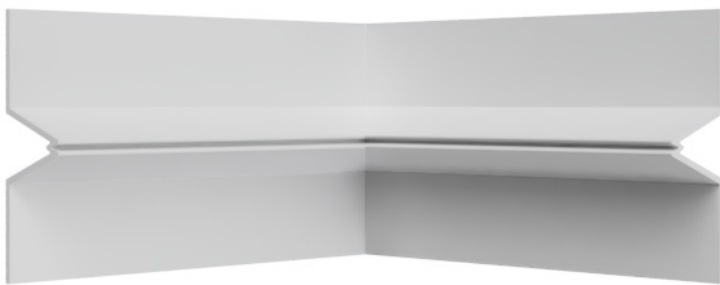
4-WAY INSECTION



3-WAY INSECTION



INSIDE CORNER



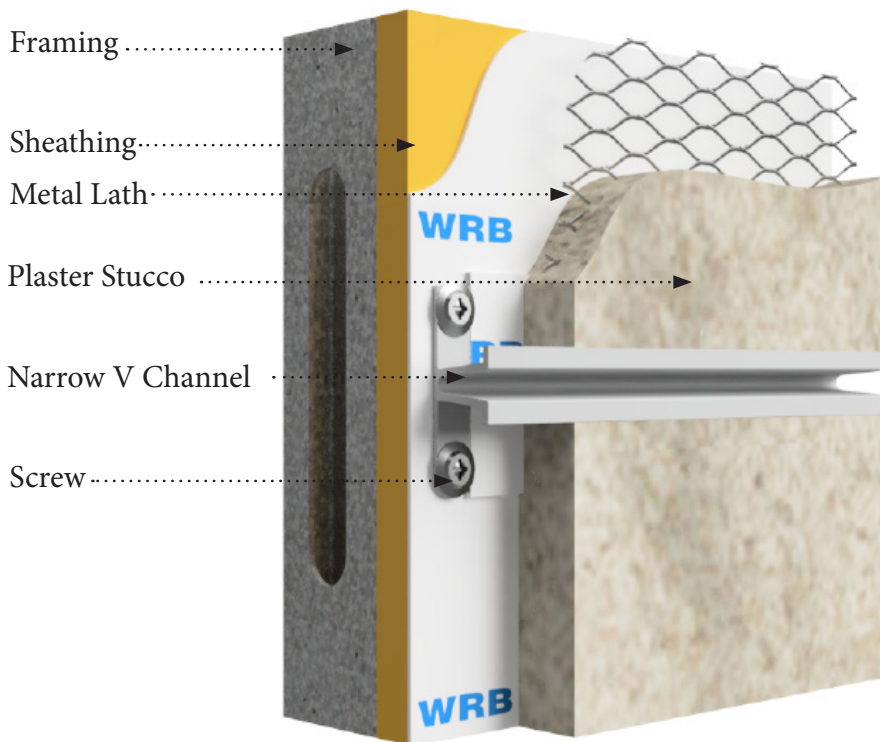
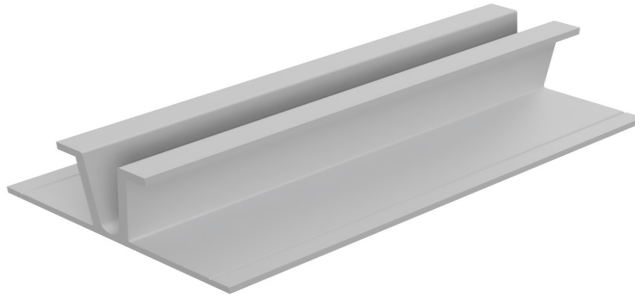
OUTSIDE CORNER



L ANGLE



NARROW V CHANNEL OVERVIEW



DESCRIPTION

The Brand X Metals Narrow 'V' Channel replicate the appearance of the classic XJ-15 with the benefits and beauty of extruded aluminum.

MATERIAL

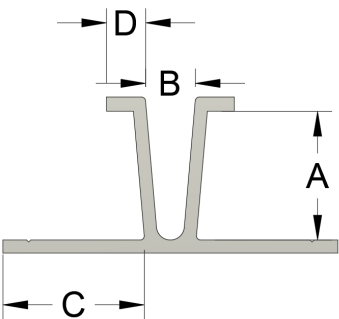
MATERIAL: Aluminum Alloy 6063 T5 ASTM: B221, C1047, C1063, C841
THICKNESS: Nominal .050
LENGTH: Standard 10 ft.
FINISH: Standard-Clear anodized Architectural 200R1 Medium Etch AAM-32C10A21

AVAILABLE FINISHES

- Chem Film or 'Mill Finish' for field painting.
- Class 1 Bronze & Black Anodized
- 6500 Different Powder Coat Colors
- Kynar Finish



NARROW V CHANNEL ID CHART



ID	DIM A	DIM B	DIM C	DIM D
PCV 75-25	3/4"	1/4"	7/8"	3/16"

NARROW V CHANNEL RADIUS/CURVING

Brand X Metals, Inc. has in-house capabilities to curve interior and exterior trims for your job specifications.
Narrow V Channel can be curved in all three directions.

TYPE-1



TYPE-2



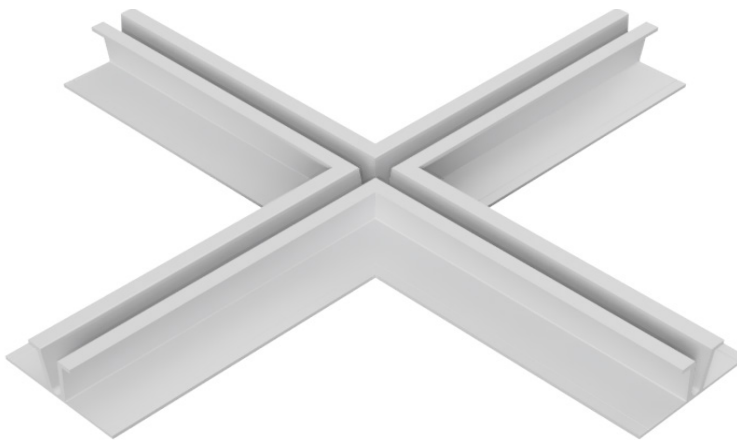
TYPE-3



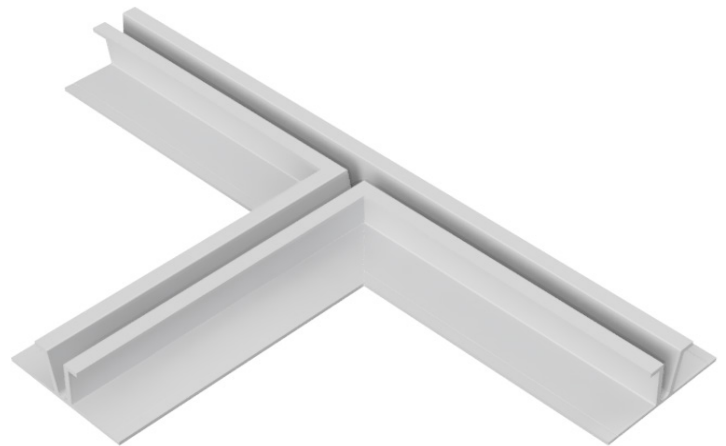
NARROW V CHANNEL INTERSECTIONS & CORNERS

The standard leg length of our intersections are 5-3/4 inches. However, we can custom-fabricate to any size leg length to meet your specific needs. This ensures that our products will fit your space perfectly and be easy to install.

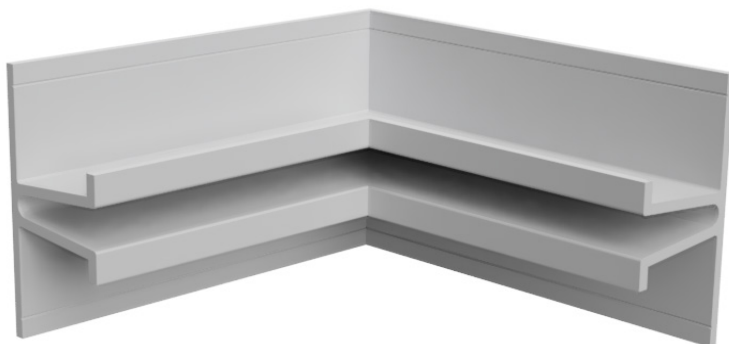
4-WAY INSECTION



3-WAY INSECTION



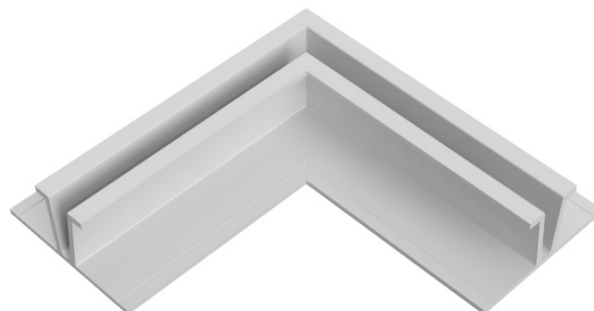
INSIDE CORNER



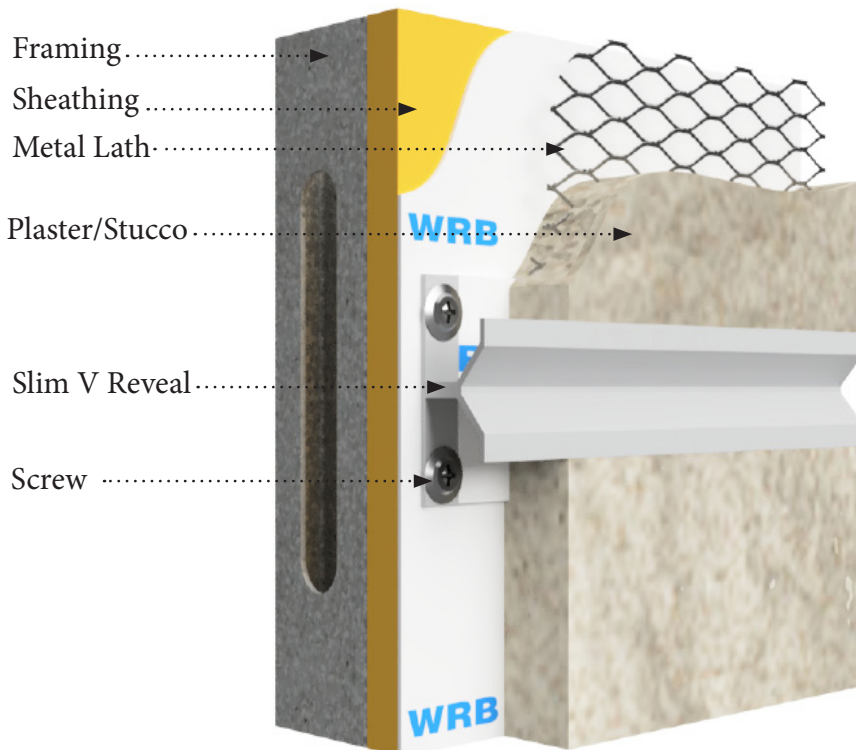
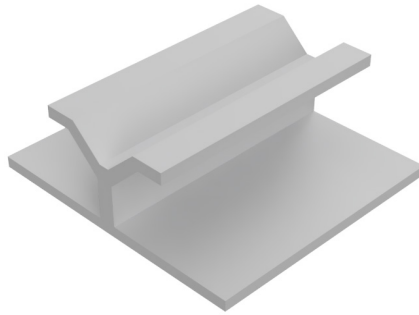
OUTSIDE CORNER



L ANGLE



SLIM V CHANNEL OVERVIEW



DESCRIPTION

V Reveal is a versatile product that can be used to replicate the appearance of pre-cast concrete tilt-up panel joints. The V channel reveals give the architect the ability to maintain the appearance of pre-cast panels in adjacent construction or store front build outs.

V Reveal is made from high-quality aluminum and is available in a variety of finishes to match your existing décor. It is easy to install & maintain, and will provide years of trouble-free service.

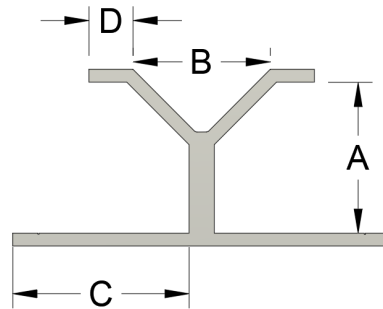
MATERIAL

MATERIAL: Aluminum Alloy 6063 T5 ASTM: B221, C1047, C1063, C841
THICKNESS: Nominal .050
LENGTH: Standard 10 ft.
FINISH: Standard-Clear anodized
 Architectural 200R1 Medium Etch AAM-32C10A21

AVAILABLE FINISHES

- Chem Film or 'Mill Finish' for field painting.
- Class 1 Bronze & Black Anodized
- 6500 Different Powder Coat Colors
- Kynar Finish

SLIM V CHANNEL ID CHART



ID	DIM A	DIM B	DIM C	DIM D
PCV 75-75	3/4"	3/4"	13/16"	3/16"

SLIM V CHANNEL RADIUS/CURVING

Brand X Metals, Inc. has in-house capabilities to curve interior and exterior trims for your job specifications.
Slim V Channel can be curved in all three directions.

TYPE-1



TYPE-2



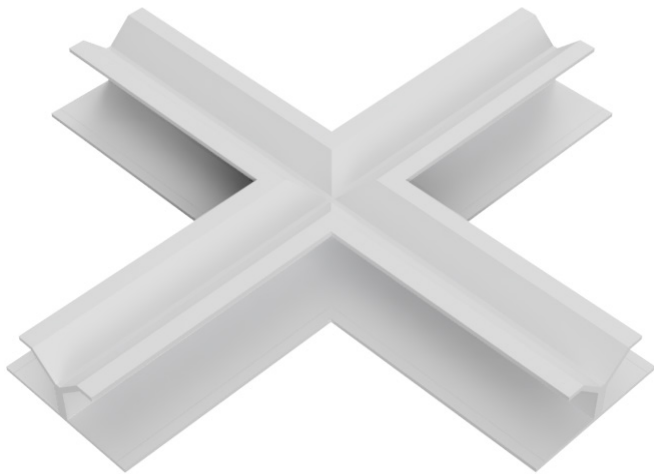
TYPE-3



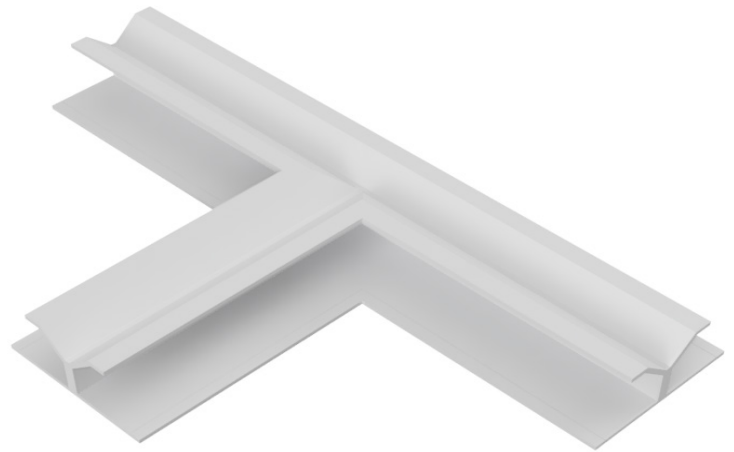
SLIM V CHANNEL INTERSECTIONS & CORNERS

The standard leg length of our intersections are 5-3/4 inches. However, we can custom-fabricate to any size leg length to meet your specific needs. This ensures that our products will fit your space perfectly and be easy to install.

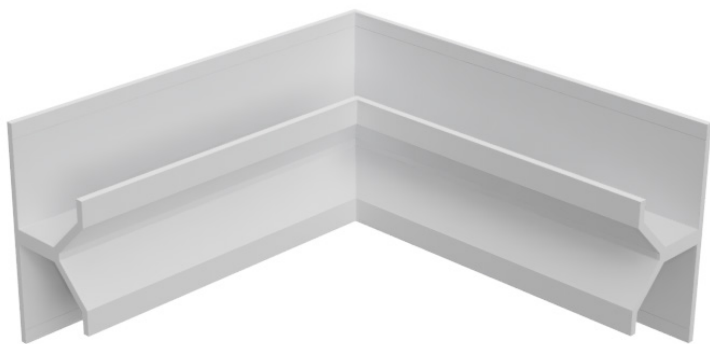
4-WAY INTERSECTION



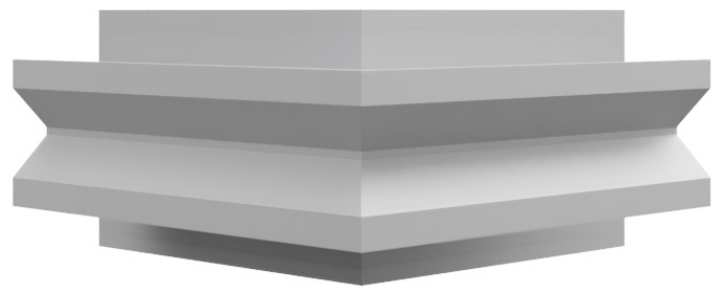
3-WAY INTERSECTION



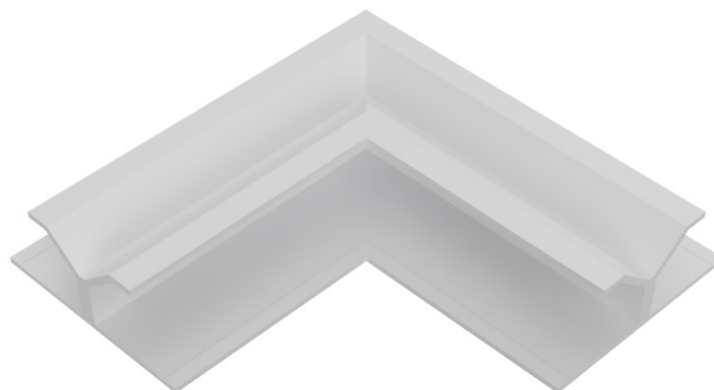
INSIDE CORNER



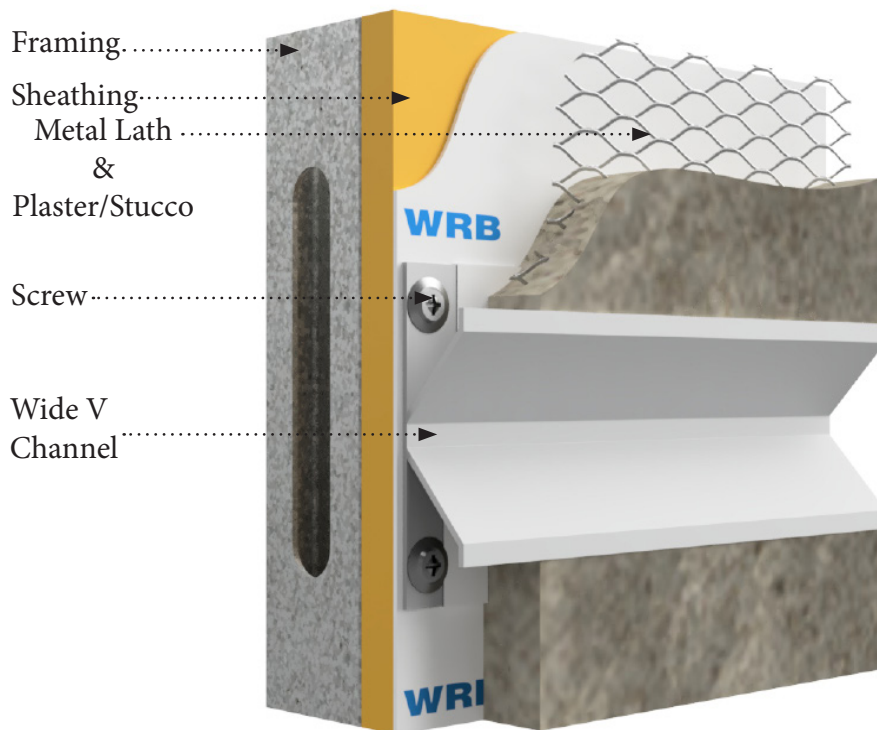
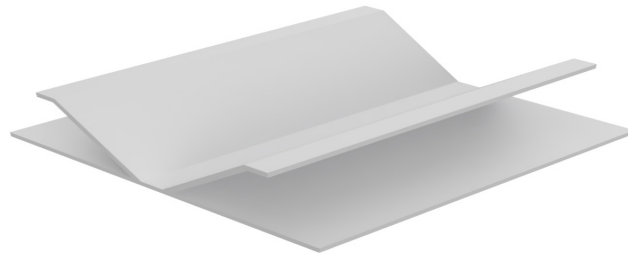
OUTSIDE CORNER



L ANGLE



WIDE V CHANNEL OVERVIEW



DESCRIPTION

'V' Reveal replicate the appearance of pre-cast concrete tilt-up panel joints. The 'V' channel trim gives the architect the ability to maintain the appearance of pre-cast panels in adjacent construction or store front build outs.

MATERIAL

MATERIAL: Aluminum Alloy 6063 T5 ASTM: B221, C1047, C1063, C841
THICKNESS: Nominal .050
LENGTH: Standard 10 ft.
FINISH: Standard-Clear anodized Architectural 200R1 Medium Etch AAM-32C10A21

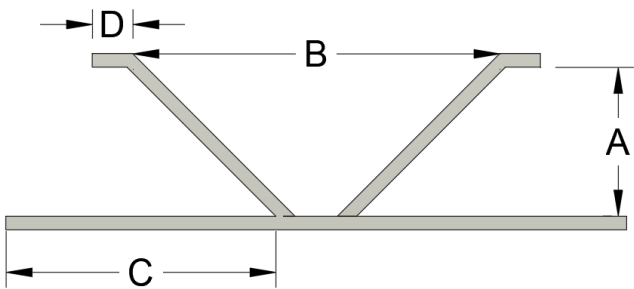
AVAILABLE FINISHES

- Chem Film or 'Mill Finish' for field painting.
- Class 1 Bronze & Black Anodized
- 6500 Different Powder Coat Colors
- Kynar Finish



PLASTER & STUCCO EXTRUSIONS

WIDE V CHANNEL ID CHART



ID	DIM A	DIM B	DIM C	DIM D
PCV 75-150	3/4"	1-1/2"	1-7/16"	3/16"

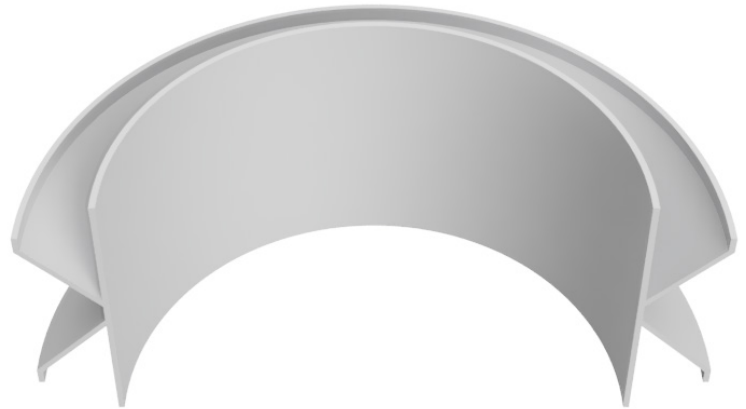
WIDE V CHANNEL RADIUS/CURVING

Brand X Metals, Inc. has in-house capabilities to curve interior and exterior trims for your job specifications.
Wide V Channel can be curved in all three directions.

TYPE-1



TYPE-2



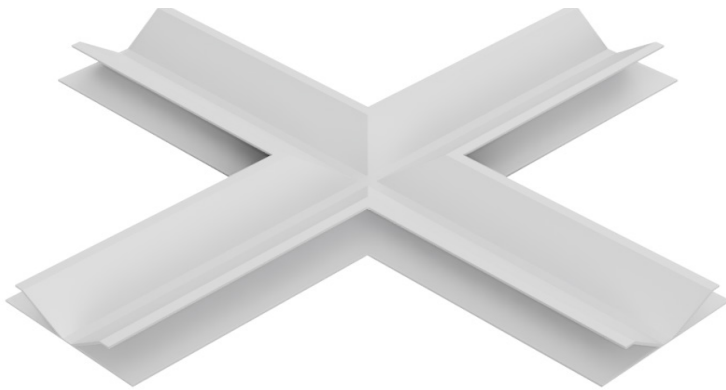
TYPE-3



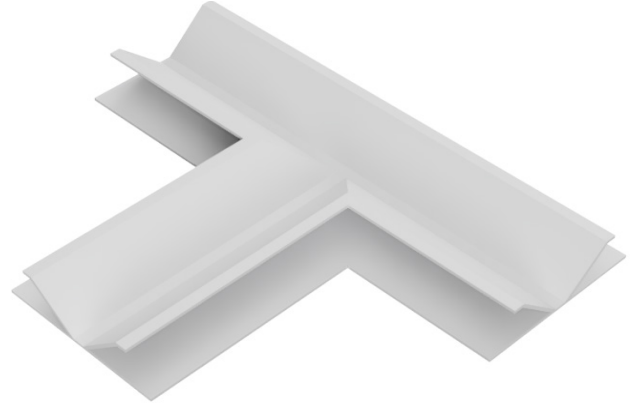
WIDE V CHANNEL INTERSECTIONS & CORNERS

The standard leg length of our intersections are 5-3/4 inches. However, we can custom-fabricate to any size leg length to meet your specific needs. This ensures that our products will fit your space perfectly and be easy to install.

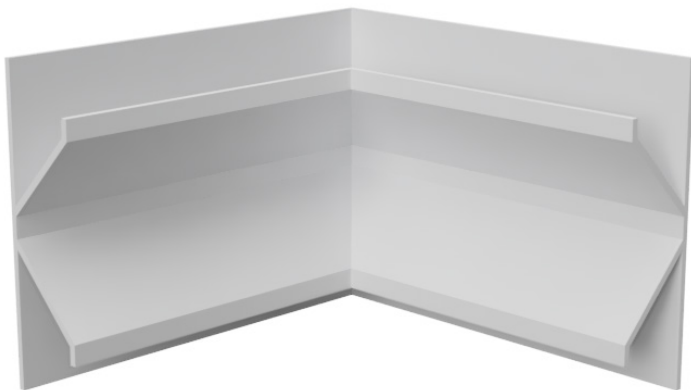
4-WAY INTERSECTION



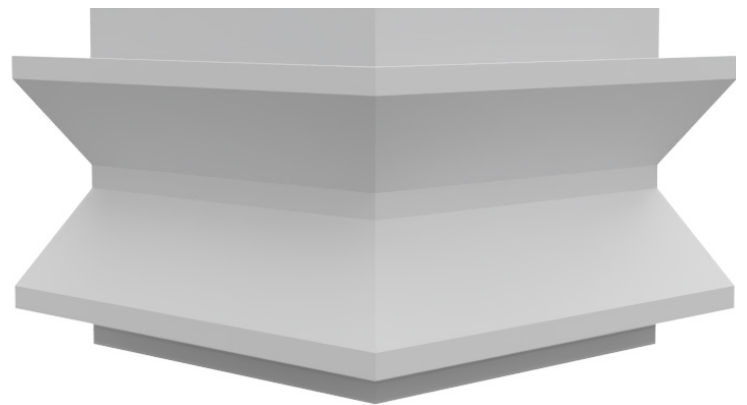
3-WAY INTERSECTION



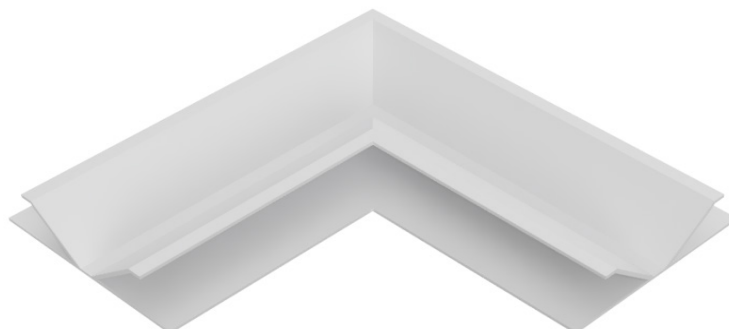
INSIDE CORNER



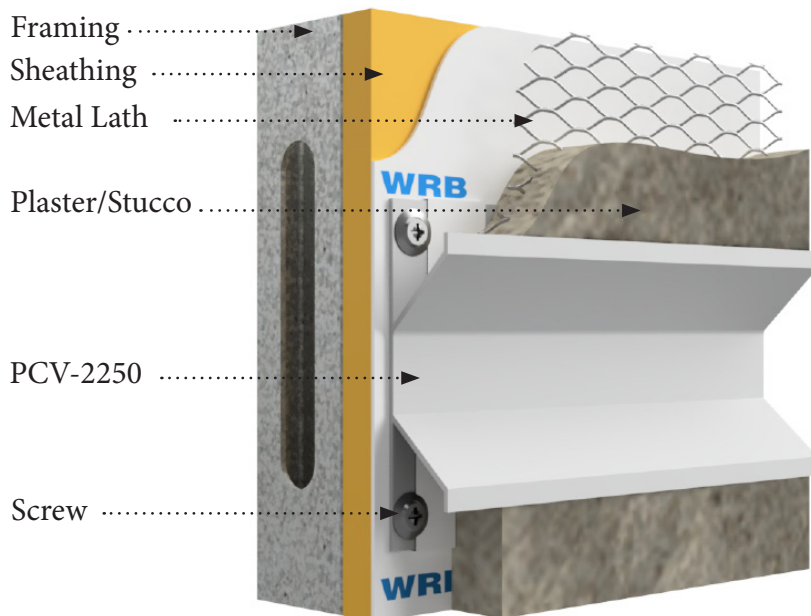
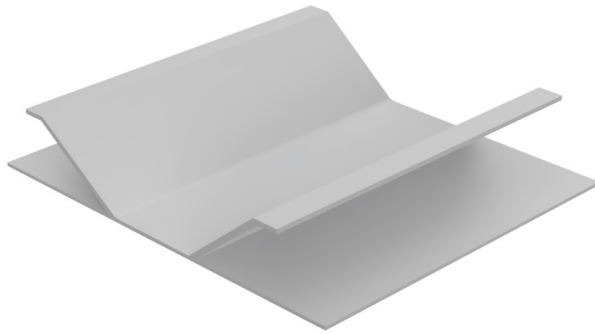
OUTSIDE CORNER



L ANGLE



EXTRA WIDE V CHANNEL OVERVIEW



DESCRIPTION

The Brand X Metals Extra Wide 'V' Reveal replicates the appearance of pre-cast concrete tilt-up panel joints. The 'V' channel trim gives the architect the ability to maintain the appearance of pre-cast panels in adjacent construction or store front build outs.

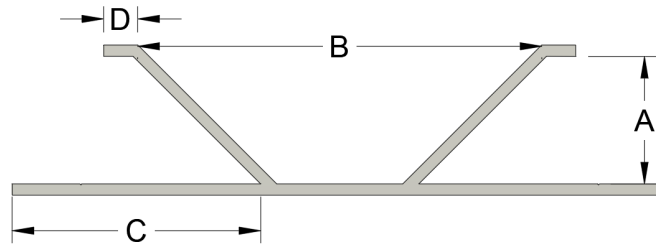
MATERIAL

MATERIAL: Aluminum Alloy 6063 T5 ASTM: B221, C1047, C1063, C841
THICKNESS: Nominal .050
LENGTH: Standard 10 ft.
FINISH: Standard-Clear anodized Architectural 200R1 Medium Etch AAM-32C10A21

AVAILABLE FINISHES

- Chem Film or 'Mill Finish' for field painting.
- Class 1 Bronze & Black Anodized
- 6500 Different Powder Coat Colors
- Kynar Finish

EXTRA WIDE V CHANNEL ID CHART



ID	DIM A	DIM B	DIM C	DIM D
PCV-2250	3/4"	2-1/4"	1-3/8"	3/16"

EXTRA WIDE V CHANNEL RADIUS/CURVING

Brand X Metals, Inc. has in-house capabilities to curve interior and exterior trims for your job specifications.
wide v can be curved in all three directions.

TYPE-1



TYPE-2



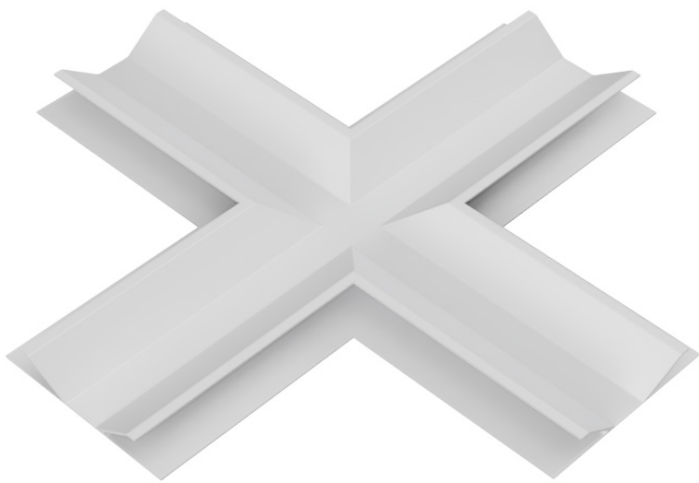
TYPE-3



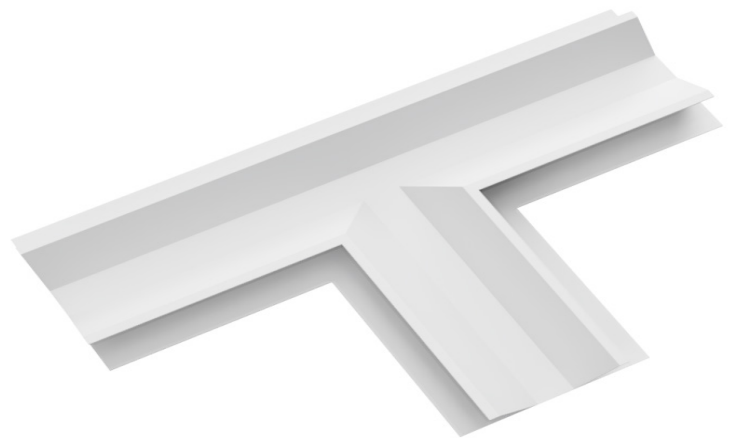
EXTRA WIDE V CHANNEL INTERSECTIONS & CORNERS

The standard leg length of our intersections are 5-3/4 inches. However, we can custom-fabricate to any size leg length to meet your specific needs. This ensures that our products will fit your space perfectly and be easy to install.

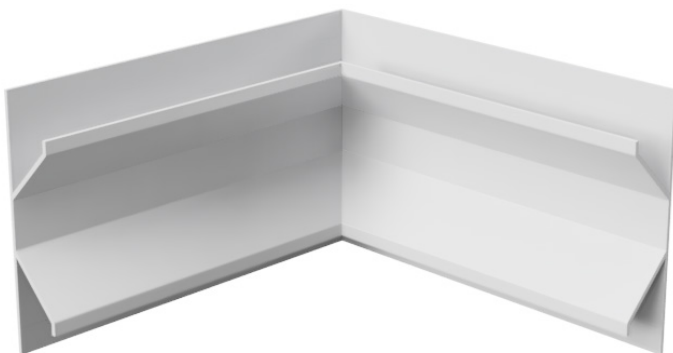
4-WAY INSECTION



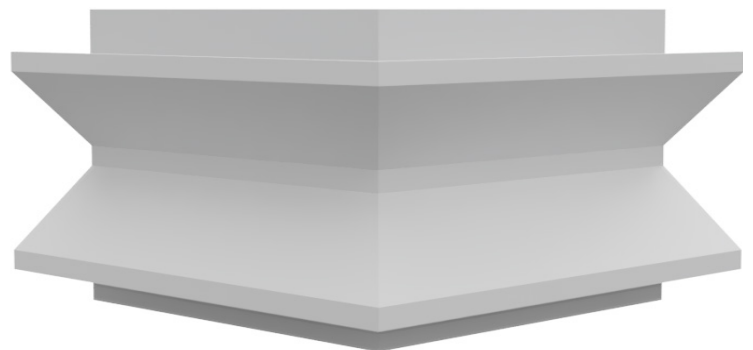
3-WAY INSECTION



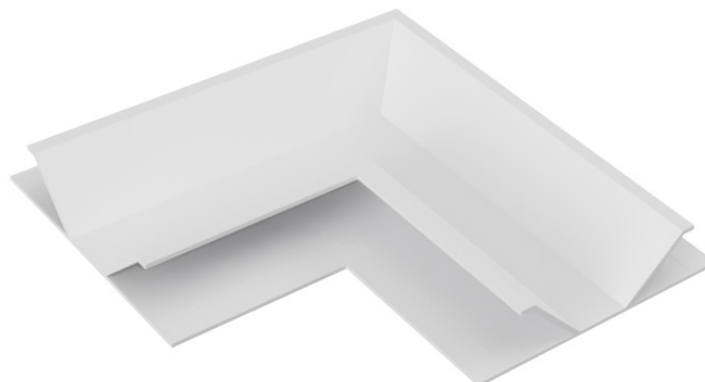
INSIDE CORNER



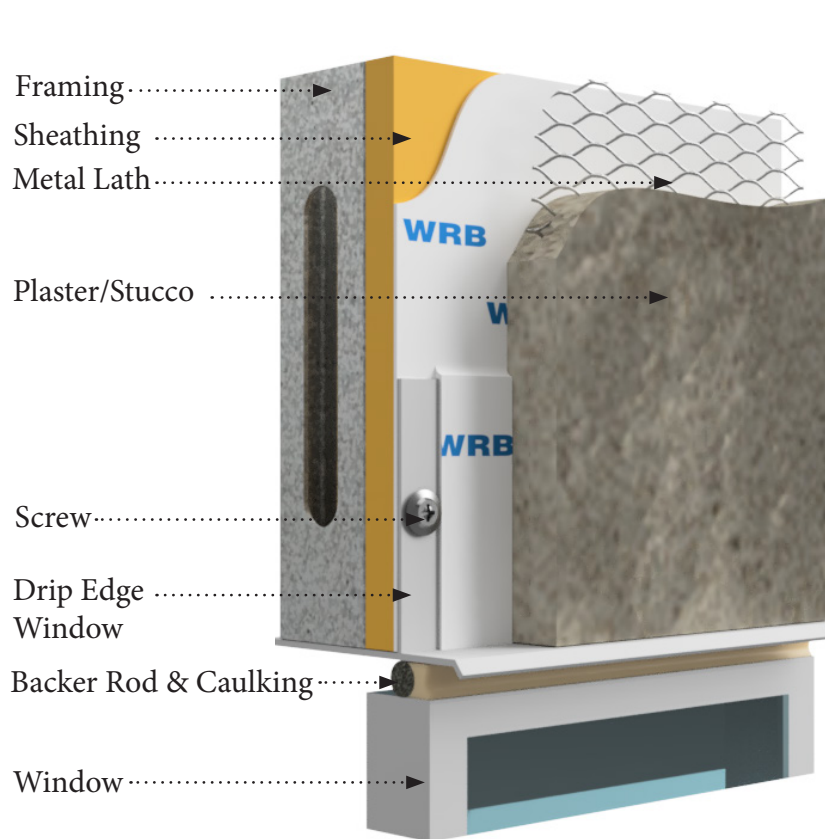
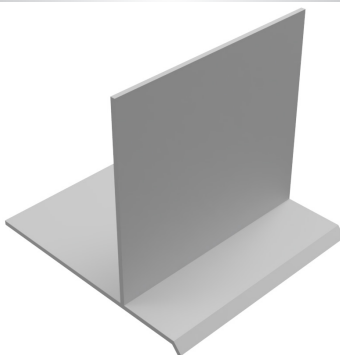
OUTSIDE CORNER



L ANGLE



WINDOW HEADER DRIP OVERVIEW



DESCRIPTION

Brand X Metals, Inc. provides an array of plaster termination treatments for window openings, including our Window Jamb and Sill (pt # WS-400) which is an integral part of our Window Surround System. This system offers various advantages over traditional methods of running 3-coat plaster in the return for recessed windows. The WS Series provides flexible positioning of the window frame, reducing the need for additional lath and plaster materials and labor costs for the recessed return. The smooth metal to metal caulk joint ensures excellent leak prevention, resulting in a seamless and durable finish.

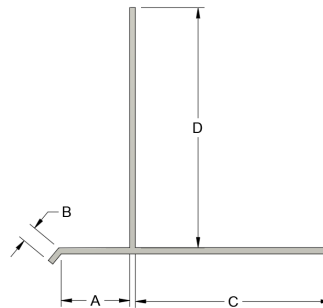
MATERIAL

MATERIAL: Aluminum Alloy 6063 T5 ASTM: B221, C1047, C1063, C841
THICKNESS: Nominal .063
LENGTH: Standard 10 ft.
FINISH: Standard-Clear anodized Architectural 200R1 Medium Etch AAM32C10A21

AVAILABLE FINISHES

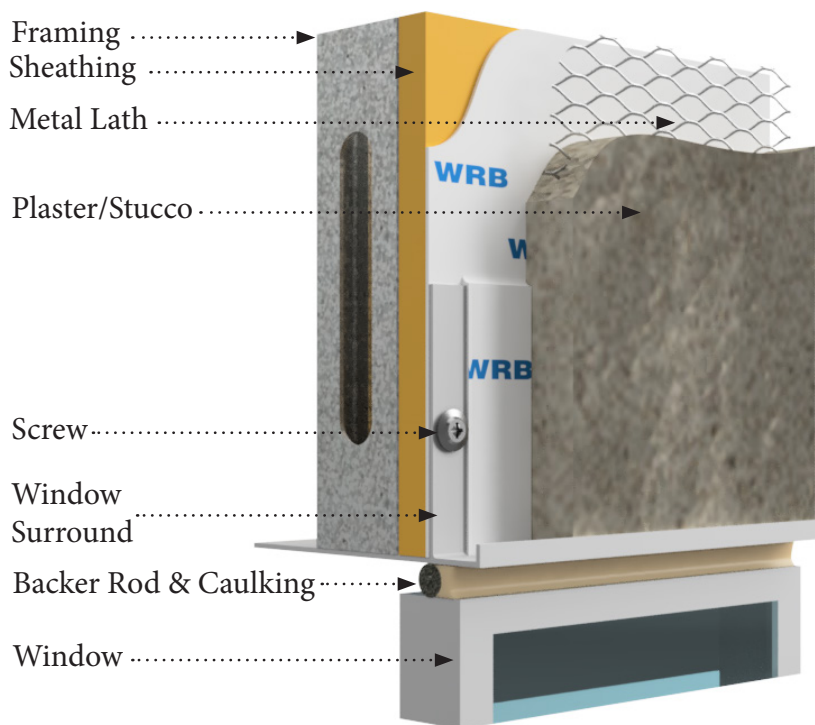
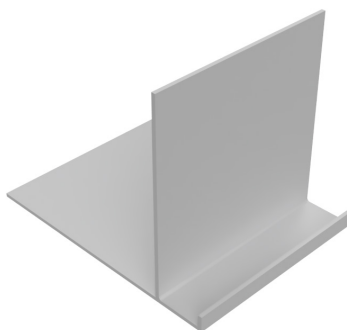
- Chem Film or 'Mill Finish' for field painting.
- Class 1 Bronze & Black Anodized
- 6500 Different Powder Coat Colors
- Kynar Finish

WINDOW HEADER DRIP ID CHART



ID	DIM A	DIM B	DIM C	DIM D
WSD-400	7/8"	3/16"	3"	3"

WINDOW SURROUND JAMB & SILL OVERVIEW



DESCRIPTION

Brand X Metals, Inc. provides an array of plaster termination treatments for window openings, including our Window Jamb and Sill (pt # WS-400) which is an integral part of our Window Surround System. This system offers various advantages over traditional methods of running 3-coat plaster in the return for recessed windows. The WS Series provides flexible positioning of the window frame, reducing the need for additional lath and plaster materials and labor costs for the recessed return. The smooth metal to metal caulk joint ensures excellent leak prevention, resulting in a seamless and durable finish.

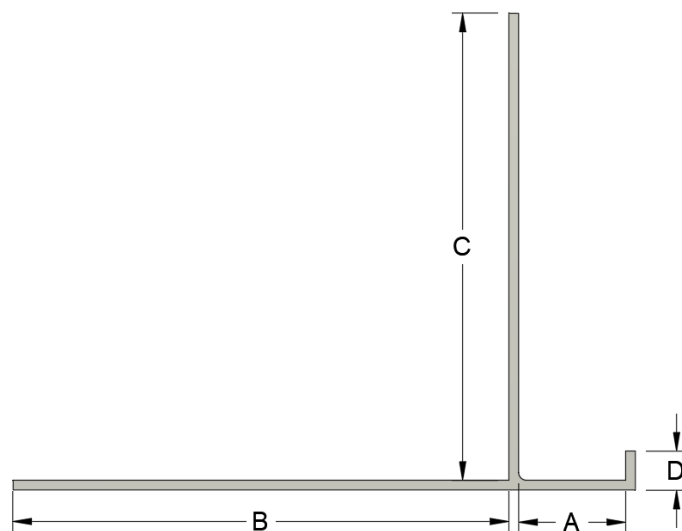
MATERIAL

MATERIAL: Aluminum Alloy 6063 T5 ASTM: B221, C1047, C1063, C841
 THICKNESS: Nominal .063
 LENGTH: Standard 10 ft.
 FINISH: Standard-Clear anodized

AVAILABLE FINISHES

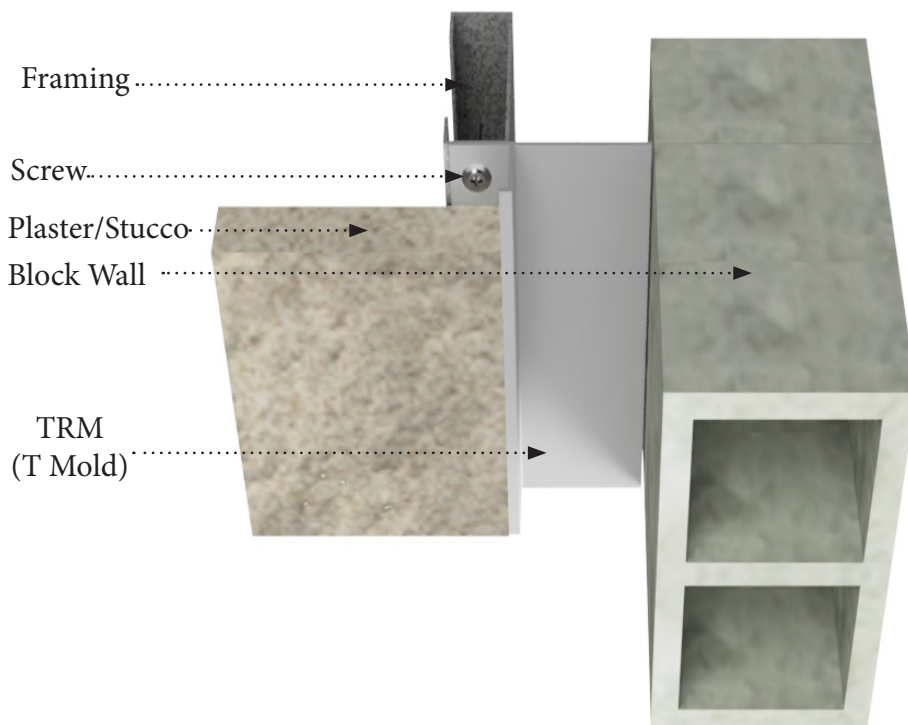
- Chem Film or 'Mill Finish' for field painting.
- Class 1 Bronze & Black Anodized
- 6500 Different Powder Coat Colors
- Kynar Finish

WINDOW SURROUND JAMB & SILL ID CHART



ID	DIM A	DIM B	DIM C	DIM D
WS-400	3/4"	3"	3"	3/16"

T MOLD OVERVIEW



DESCRIPTION

The 'T' Mold is a general purpose trim that works well where dissimilar materials meet. It is also a practical replacement for the #1680 Soffit Molding when the soffit has already been framed and the 1680's top flange is not accessible for attaching. The 'T' Mold can be modified to any length from $\frac{3}{4}$ " to 4".

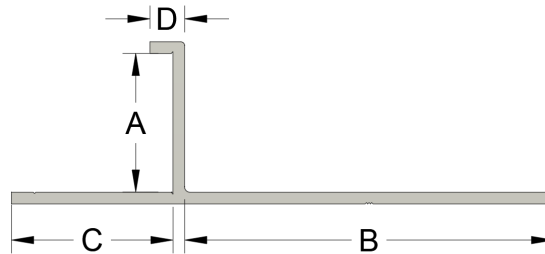
MATERIAL

MATERIAL: Aluminum Alloy 6063 T5 ASTM: B221, C1047, C1063, C841
THICKNESS: Nominal .050
LENGTH: Standard 10 ft.
FINISH: Standard-Clear anodized Architectural 200R1 Medium Etch AAM32C10A21

AVAILABLE FINISHES

- Chem Film or 'Mill Finish' for field painting.
- Class 1 Bronze & Black Anodized
- 6500 Different Powder Coat Colors
- Kynar Finish

T MOLD ID CHART

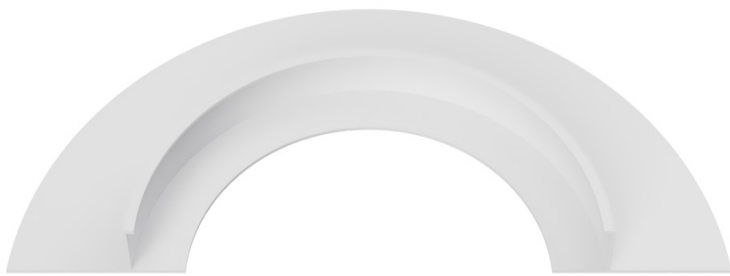


PART #	DIM A	DIM B	DIM C	DIM D
TRM 375-50	3/8"	1/2"	7/8"	3/16"
TRM 50-25	1/2"	1/4"	7/8"	3/16"
TRM 50-50	1/2"	1/2"	7/8"	3/16"
TRM 50-75	1/2"	3/4"	7/8"	3/16"
TRM 50-100	1/2"	1"	7/8"	3/16"
TRM 50-150	1/2"	1-1/2"	7/8"	3/16"
TRM 50-200	1/2"	2"	7/8"	3/16"
TRM 50-300	1/2"	3"	7/8"	3/16"
TRM 50-400	1/2"	4"	7/8"	3/16"
TRM 625-50	5/8"	1/2"	7/8"	3/16"
TRM 625-75	5/8"	3/4"	7/8"	3/16"
TRM 625-100	5/8"	1"	7/8"	3/16"
TRM 625-150	5/8"	1-1/2"	7/8"	3/16"
TRM 75-25	3/4"	1/4"	7/8"	3/16"
TRM 75-50	3/4"	1/2"	7/8"	3/16"
TRM 75-75	3/4"	3/4"	7/8"	3/16"
TRM 75-100	3/4"	1"	7/8"	3/16"
TRM 75-150	3/4"	1-1/2"	7/8"	3/16"
TRM 75-200	3/4"	2"	7/8"	3/16"
TRM 75-300	3/4"	3"	7/8"	3/16"
TRM 75-400	3/4"	4"	7/8"	3/16"

T MOLD CURVING

Brand X Metals, Inc. has in-house capabilities to curve interior and exterior trims for your job specifications.
T Molds can be curved in all four directions.

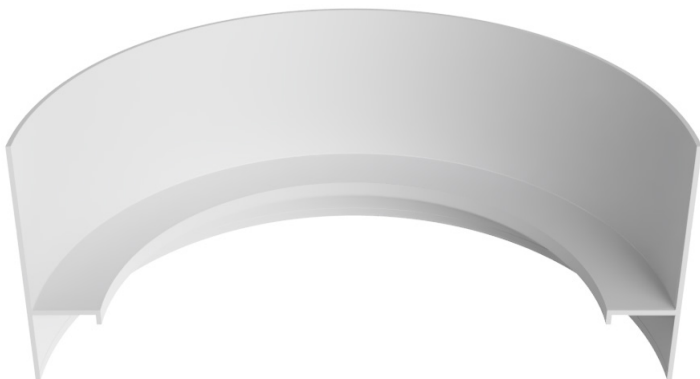
TYPE-1



TYPE-2



TYPE-3



TYPE-4





This page is left blank for printing purposes

VENTED T MOLD OVERVIEW



DESCRIPTION

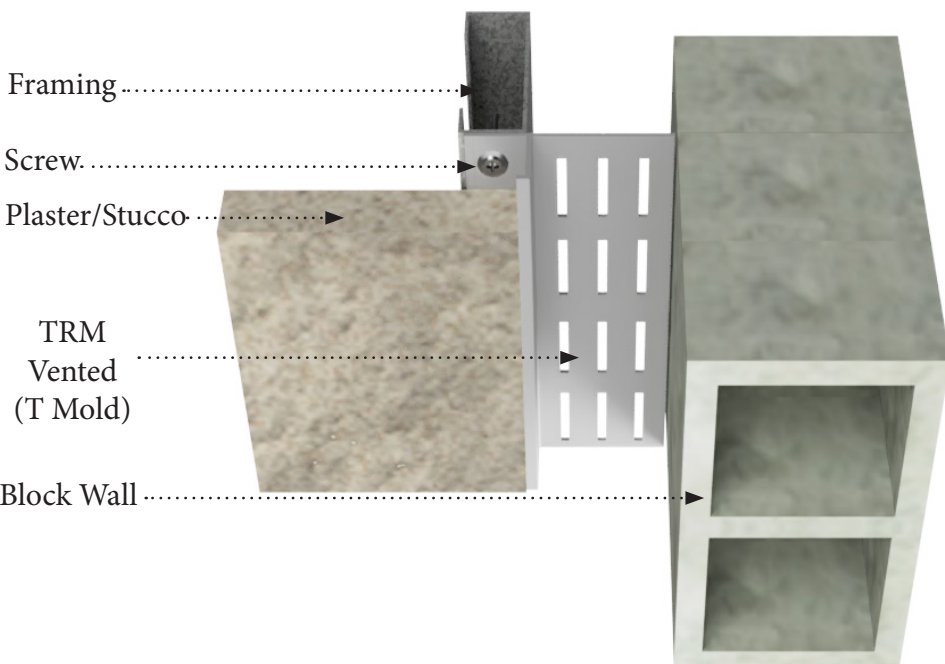
The vented T mold aluminum extrusion is a versatile trim that can be used in a variety of applications. It is perfect for use in soffits, fascias, & other areas where airflow and moisture drainage are important. The vented design helps to prevent moisture buildup, which can lead to mold & mildew growth. The aluminum construction is also durable & corrosion-resistant, making it a long-lasting choice for your home or business. General purpose trim that works well where dissimilar materials meet. Practical replacement for #1680 Soffit Molding when the soffit has already been framed. Can be modified to any length from $\frac{3}{4}$ " to 4". Features a vented design that allows for airflow and moisture drainage. Made from high-quality aluminum that is durable and corrosion-resistant.

MATERIAL

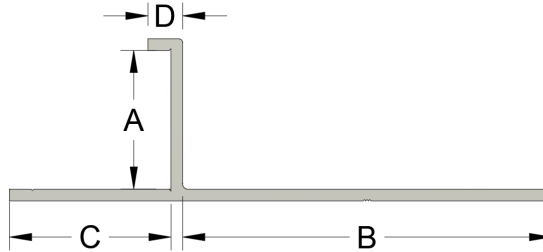
MATERIAL: Aluminum Alloy 6063 T5 ASTM: B221, C1047, C1063, C841
THICKNESS: Nominal .050
LENGTH: Standard 10 ft.
FINISH: Standard-Clear anodized Architectural 200R1 Medium Etch AAM-32C10A21

AVAILABLE FINISHES

- Chem Film or 'Mill Finish' for field painting.
- Class 1 Bronze & Black Anodized
- 6500 Different Powder Coat Colors
- Kynar Finish



VENTED T MOLD ID CHART



ID	DIM A	DIM B
N.A.	3/8"	1/2"
N.A.	1/2"	1/4"
TDM 50-V-50	1/2"	1/2"
TDM 50-V-75	1/2"	3/4"
TDM 50-V-100	1/2"	1"
TDM 50-V-150	1/2"	1-1/2"
TDM 50-V-200	1/2'	2"
TDM 50-V-300	1/2"	3"
TDM 50-V-400	1/2"	4"
TDM 625-V-50	5/8"	1/2"
TDM 625-V-75	5/8"	3/4"
TDM 625-V-100	5/8"	1"
TDM 625-V-150	5/8"	1-1/2"
N.A.	3/4"	1/4"
TRM 75-V-50	3/4"	1/2"
TRM 75-V-75	3/4"	3/4"
TRM 75-V-100	3/4"	1"
TRM 75-V-150	3/4"	1-1/2"
TRM 75-V-200	3/4"	2"
TRM 75-V-300	3/4"	3"
TRM 75-V-400	3/4"	4"