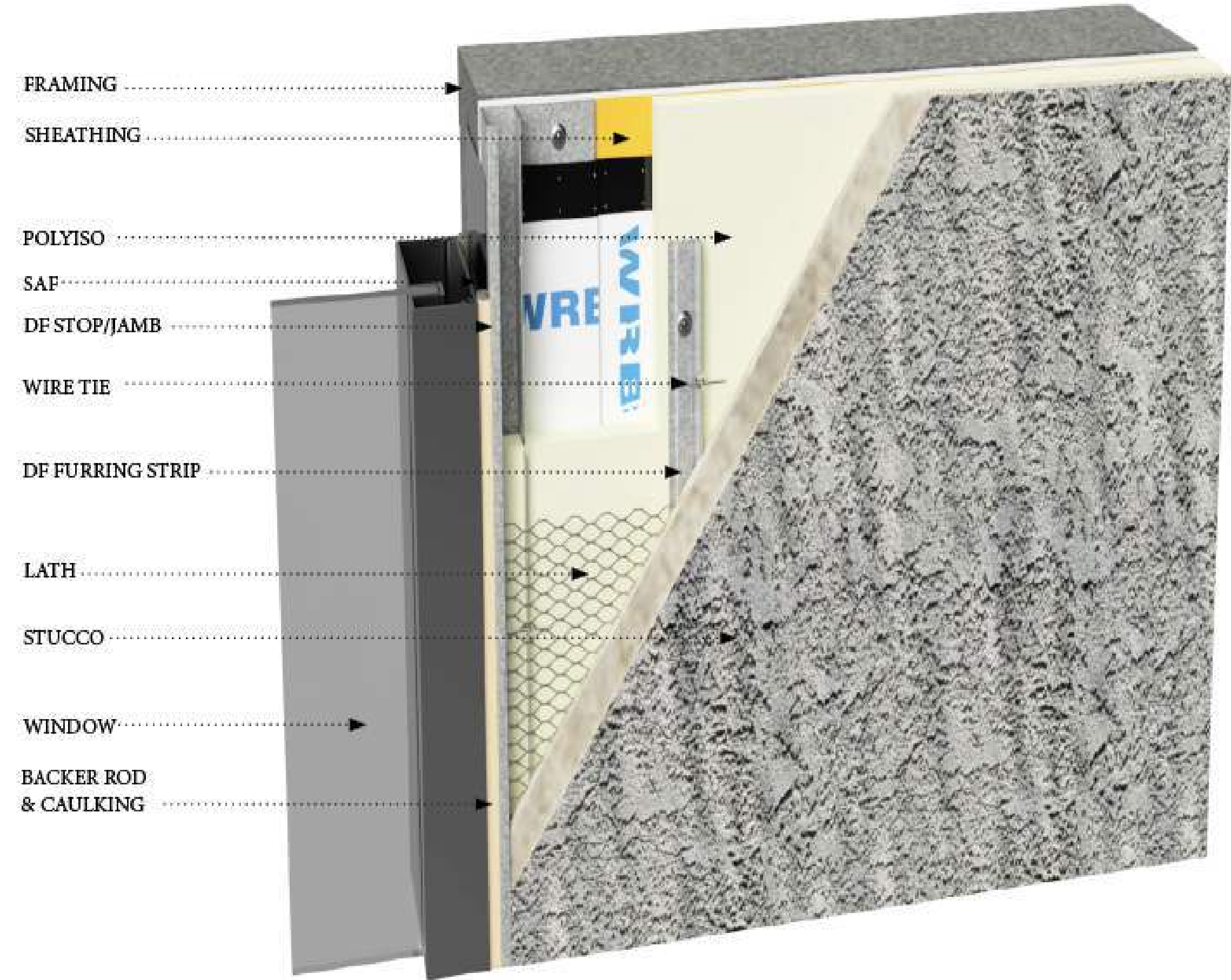


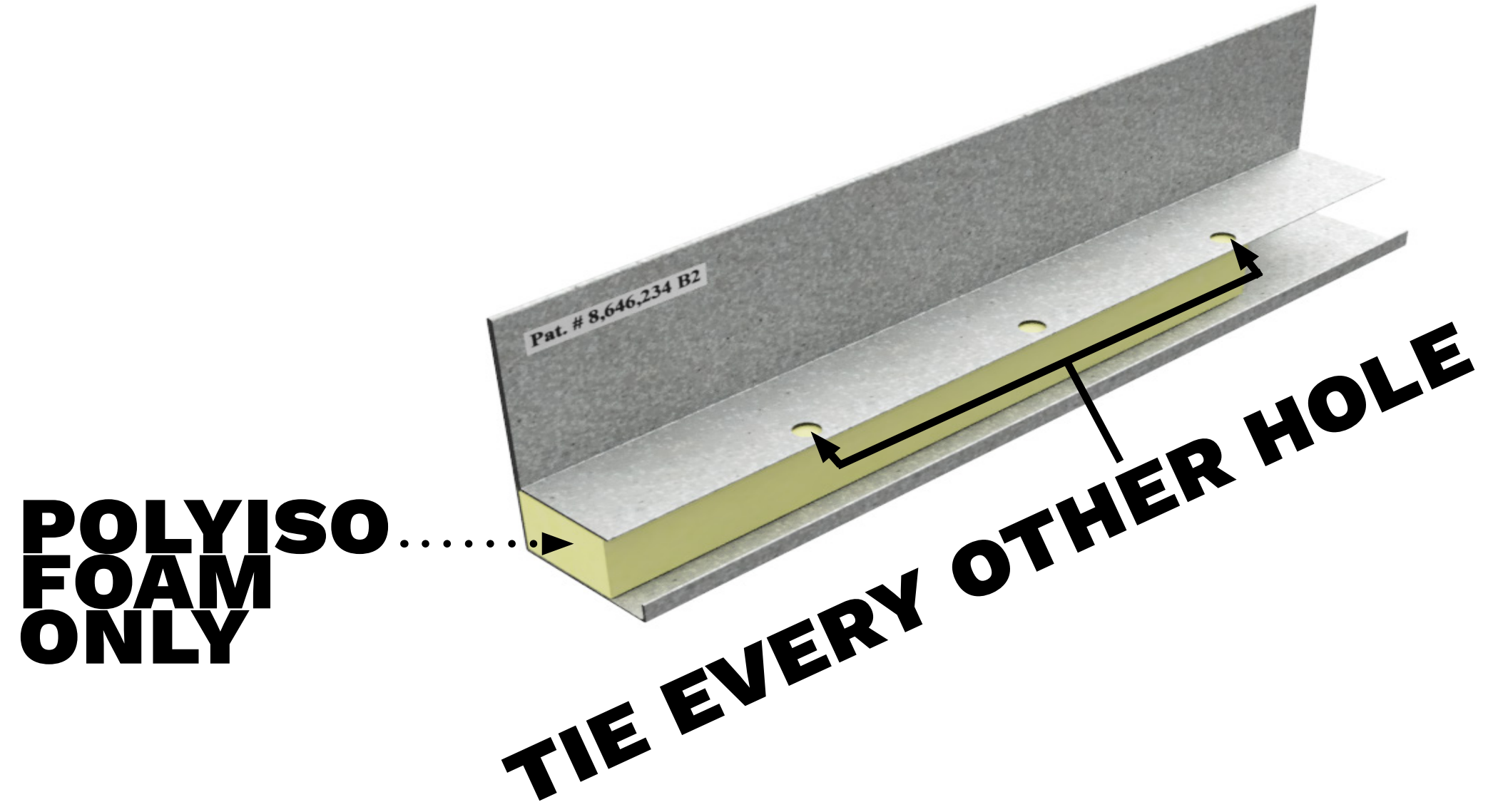
Plaster Stop Overview

DIAMOND <> FURR TT-4[®]
General Installation Guideline



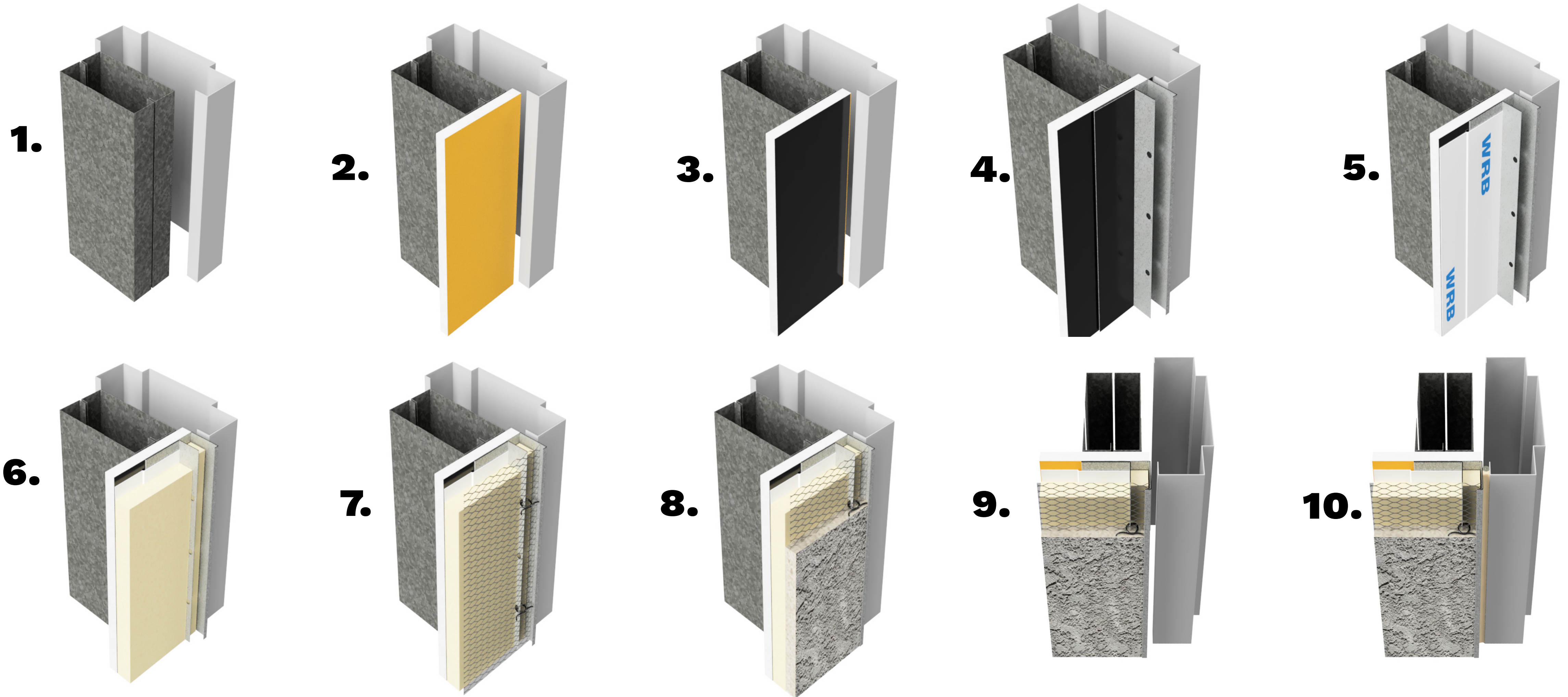
Plaster Stop Setup

The DFS can be used at a jamb, header & window surround condition.



Wire tie every other hole & install vertical furring strips on every stud. Do not use spray foam.

Jamb Plaster Stop Install



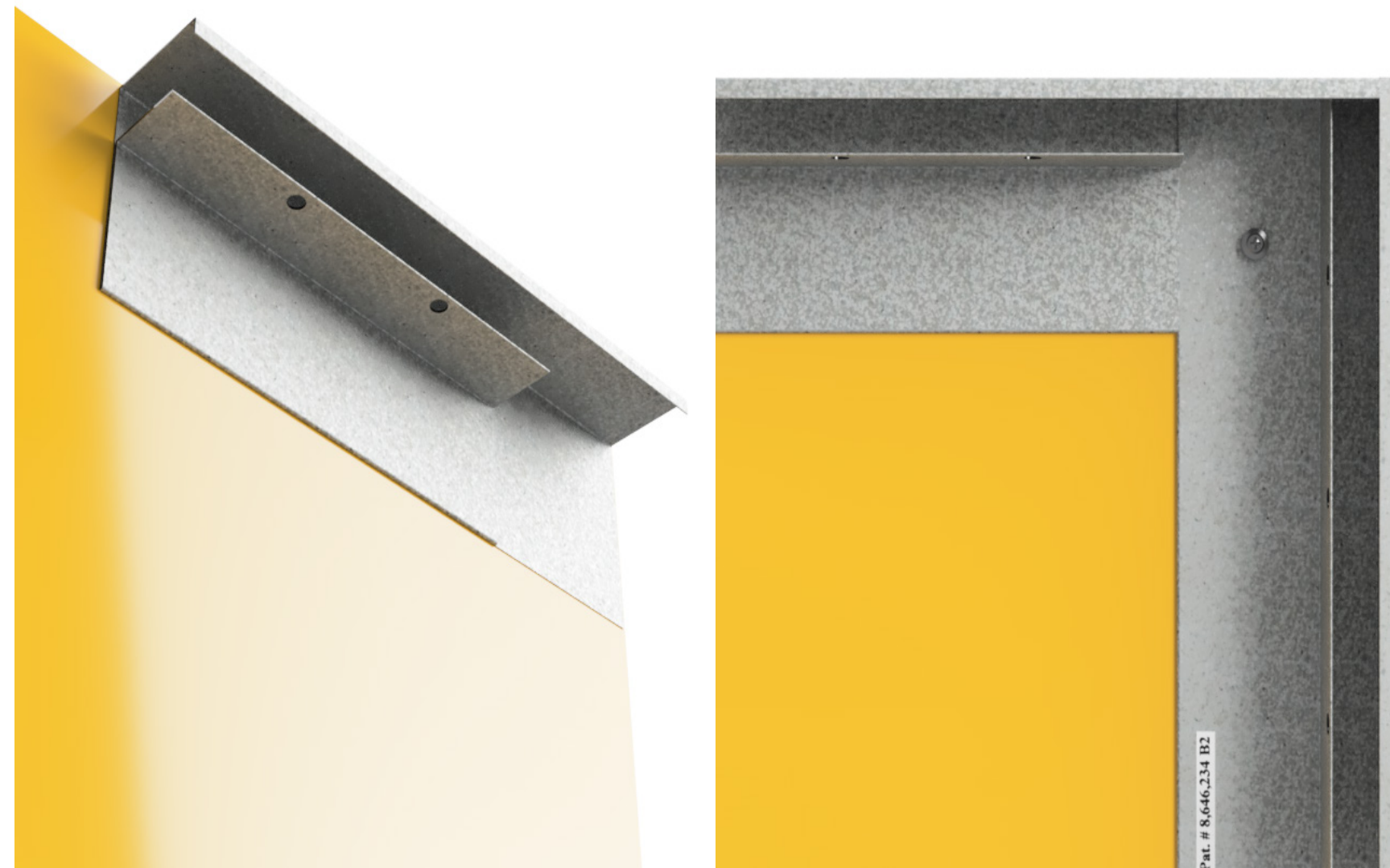
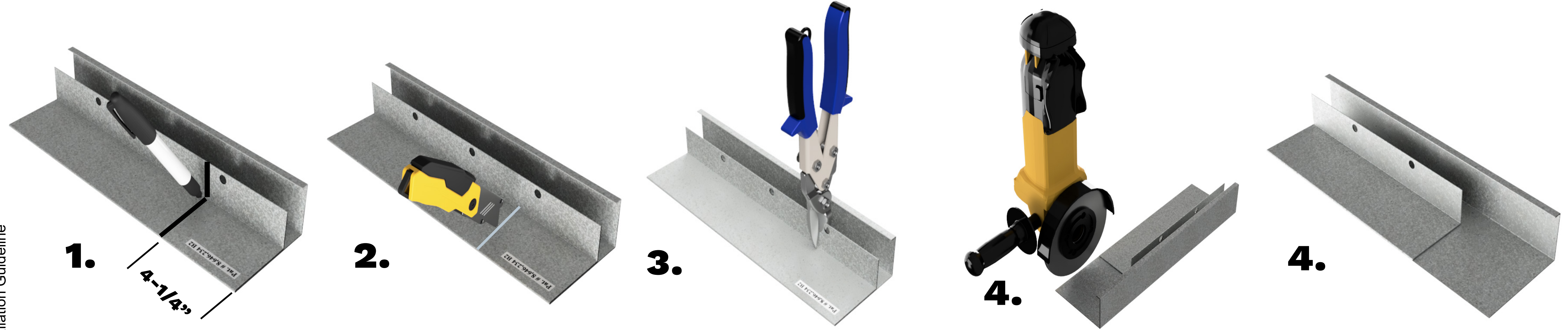
Plaster Stop Jamb

- 1 Unpunched jamb studs are recommended at door & window locations.
- 2 Fasten sheathing.
- 3 First layer of peel & stick water barrier SAF.
- 4 Install the plaster stop. Leave a space for a backer rod and caulk joint.
- 5 Second layer of SAF & Layer of building paper WRB, over the nailing flange.

- 6 Polyiso insulation.
- 7 Wire tie the Lath to the trim.
- 8 Stucco.
- 9-10 Backer rod and caulk joint.

Wire tie every other hole & install vertical furring strips on every stud. Do not use spray foam.

Perimeter Plaster Stop Field Fabrication



Plaster Stop Field Corners

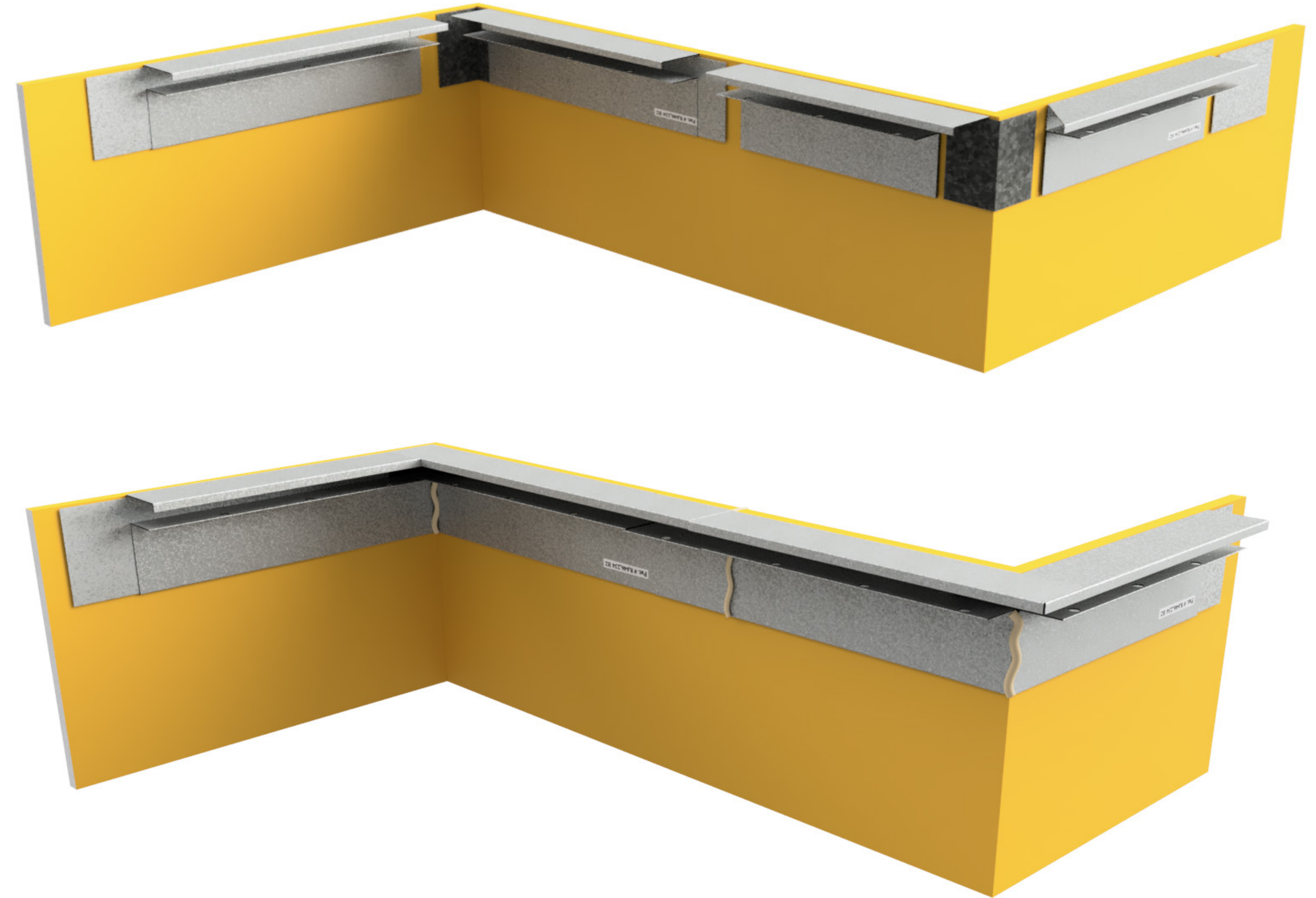
- 1 Mark the area the is meant to be cut 4-1/4" to allow for extra space.
- 2 Cut the inter top rail which has the tie off holes.
- 3 Use a grinder to cut the smashed bend to the marked location.
- 4 Bend the part back and forth, until the cut flange breaks off.
- 5 Always fasten the modified part to the wall first. This provides proper insulation flashing against the sheathing. But the complete vertical part the horizontally cut part. once the parts is fastened continue the standard process of the installation

Wire tie every other hole & install vertical furring strips on every stud. Do not use spray foam.

Plaster Stop Inside & Outside Corners Layout

Plaster Stop Corner Setup

Inside and outside corners are field miter cut and then fitted together with provided splicing plates. Polyurethane or silicone caulking must be used where corners splice together & all butt joints. Field-cut precise miters on inside and outside corners lock seamlessly with the included 26 Ga galvanized clips for a smooth, unified look. Fabrication clips make installation a breeze, ensuring perfect corners every time. Splicing clips and L angle connection clips are provided.

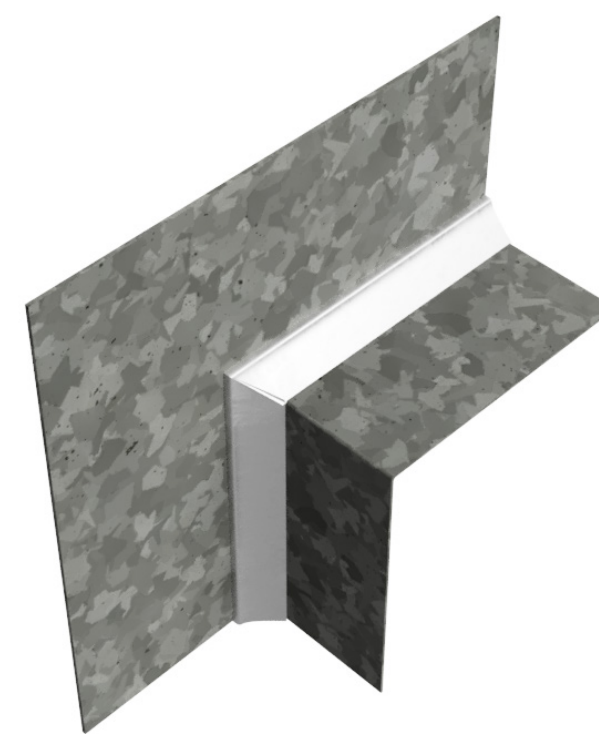
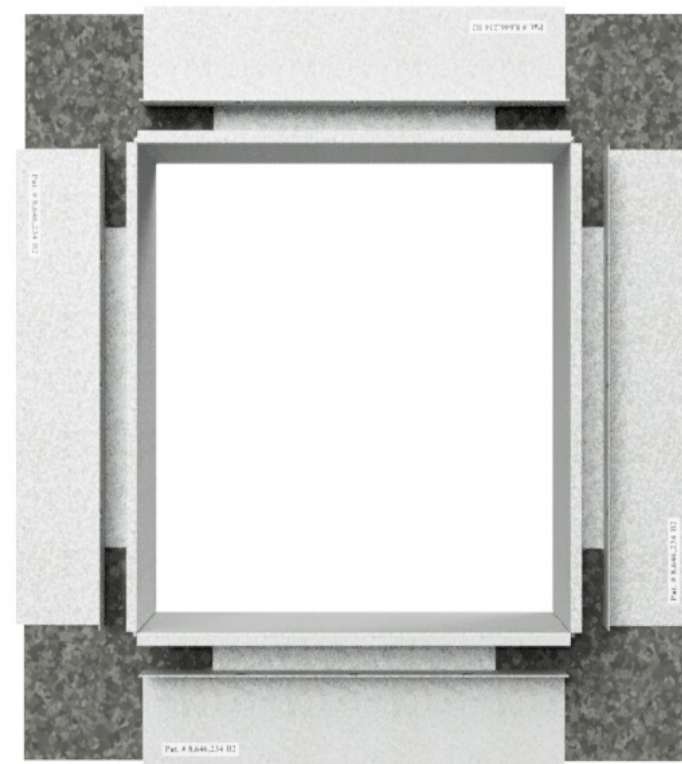
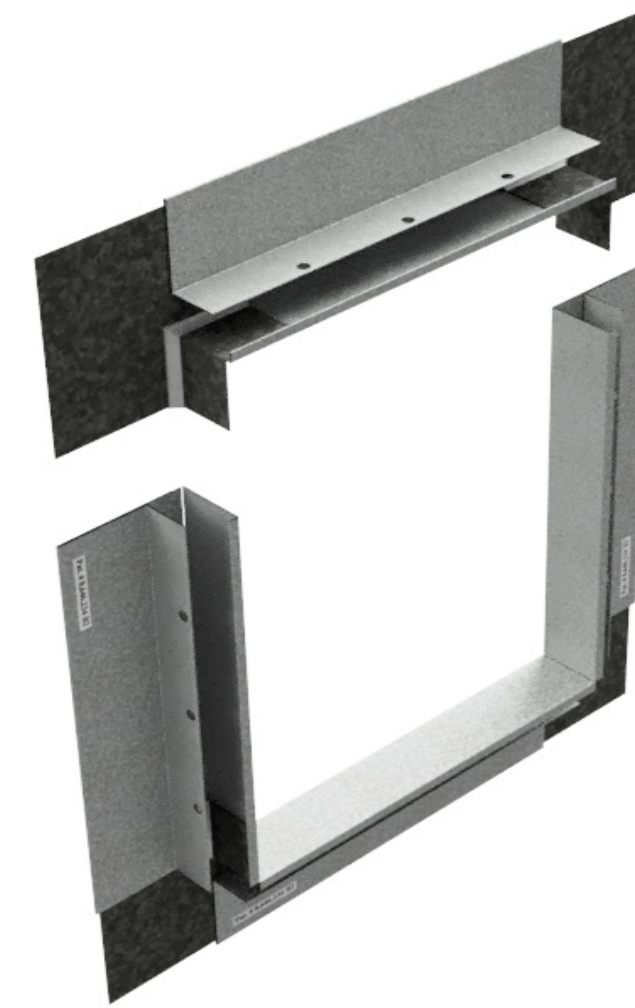
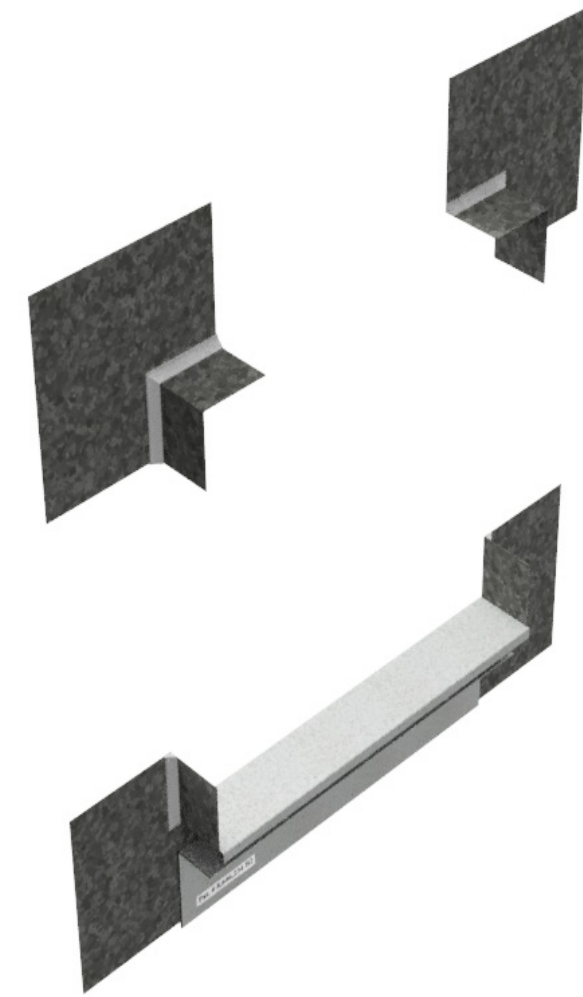
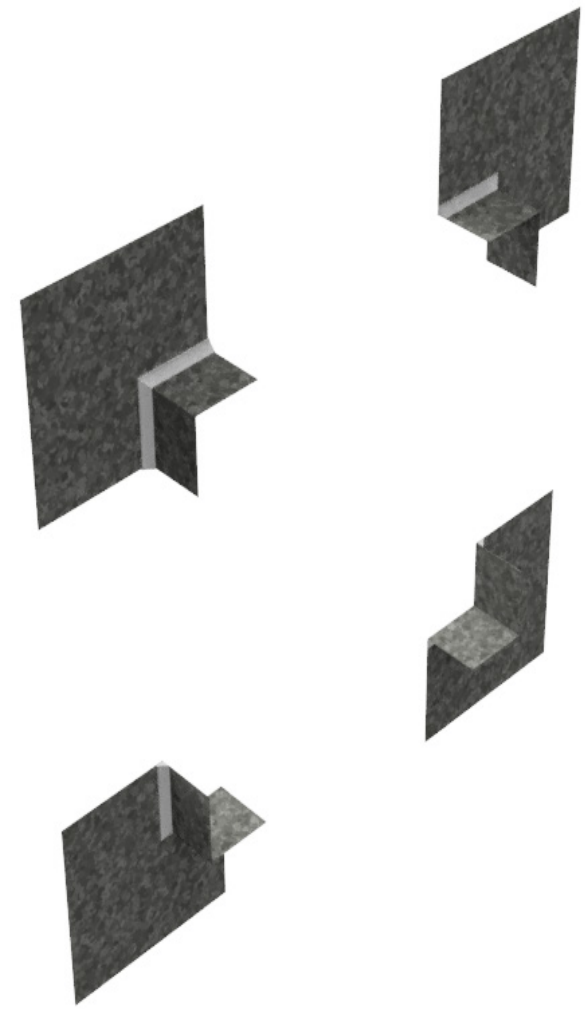


Wire tie every other hole & install vertical furring strips on every stud. Do not use spray foam.

Plaster Stop Window Surround

DIAMOND <> FURR TT-4

Installation Guideline



ID: PCC

Plaster Stop & Window Drip

Window Surround Setup

Inside and outside corners are field cut and then fitted together with provided splicing plates.

Field-cuts on inside and outside corners lock seamlessly with the included 26 Ga galvanized clips for a smooth, unified look. Fabrication clips make installation a breeze, ensuring perfect corners every time.

Splicing clips and L angle connection clips are provided.

When cutting the trims to length, make sure to subtract 3/8" of the window opening measurement.

Polyurethane or silicone caulking must be used where corners splice together & all butt joints. This must be done once the surround is installed.

Plaster Stop Window Surround Install

DIAMOND <> FURR TT-4®

General Installation Guideline



Window Plaster Stop Setup

- 1 Unpunched jamb studs are recommended at window locations.
 - 2 Fasten sheathing.
 - 3 Self-Adhering Flashing (SAF) water barrier around the window. Make sure the window surround is completely put together, this makes for fast and easy installation.
 - 4 Add caulking around all of the opening joints & around the perimeter of the window surround trim.
 - 5 Building paper WRB. SAF tape on the inside of the window.
 - 6 Polyiso insulation.
 - 7 Metal Lath. Wire tie the Lath to the trim.
 - 8 Stucco.
- Polyurethane or silicone caulking must be used where corners splice together & all butt joints.

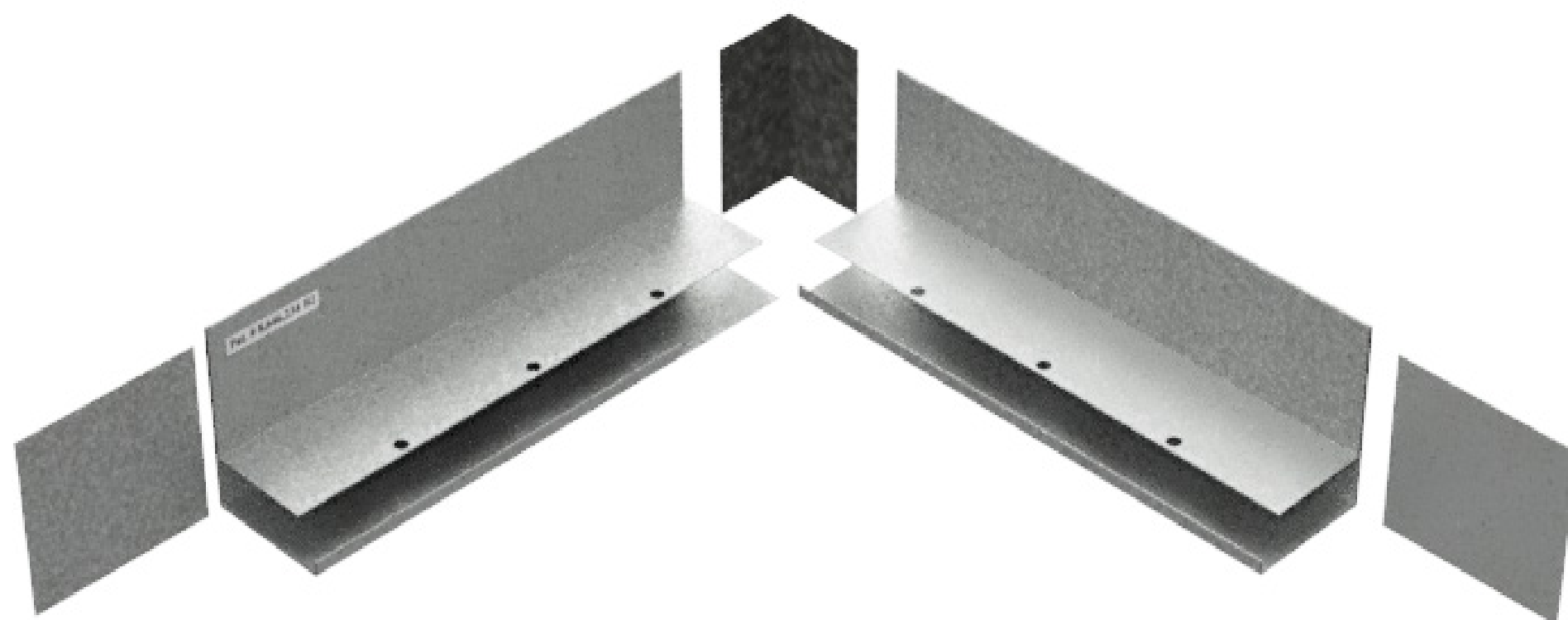
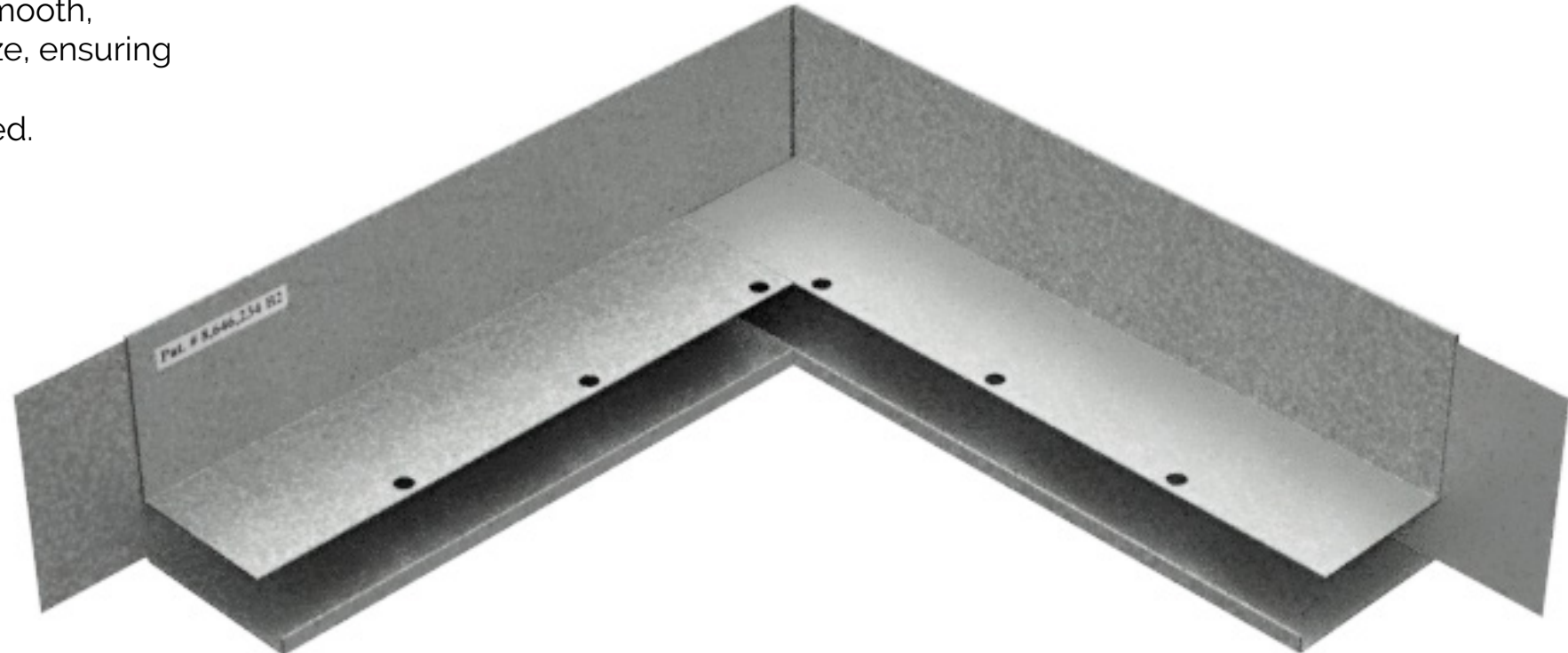
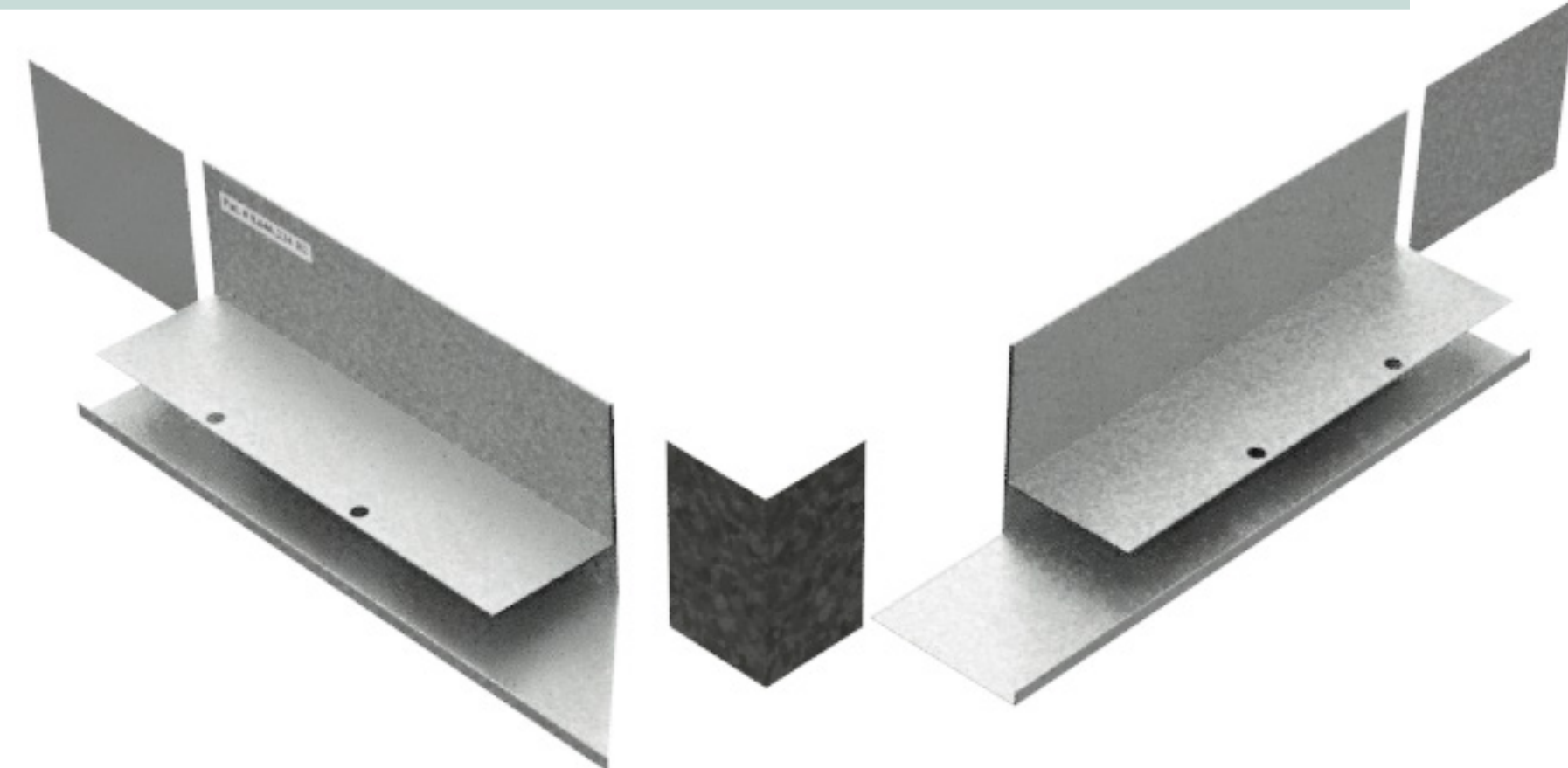
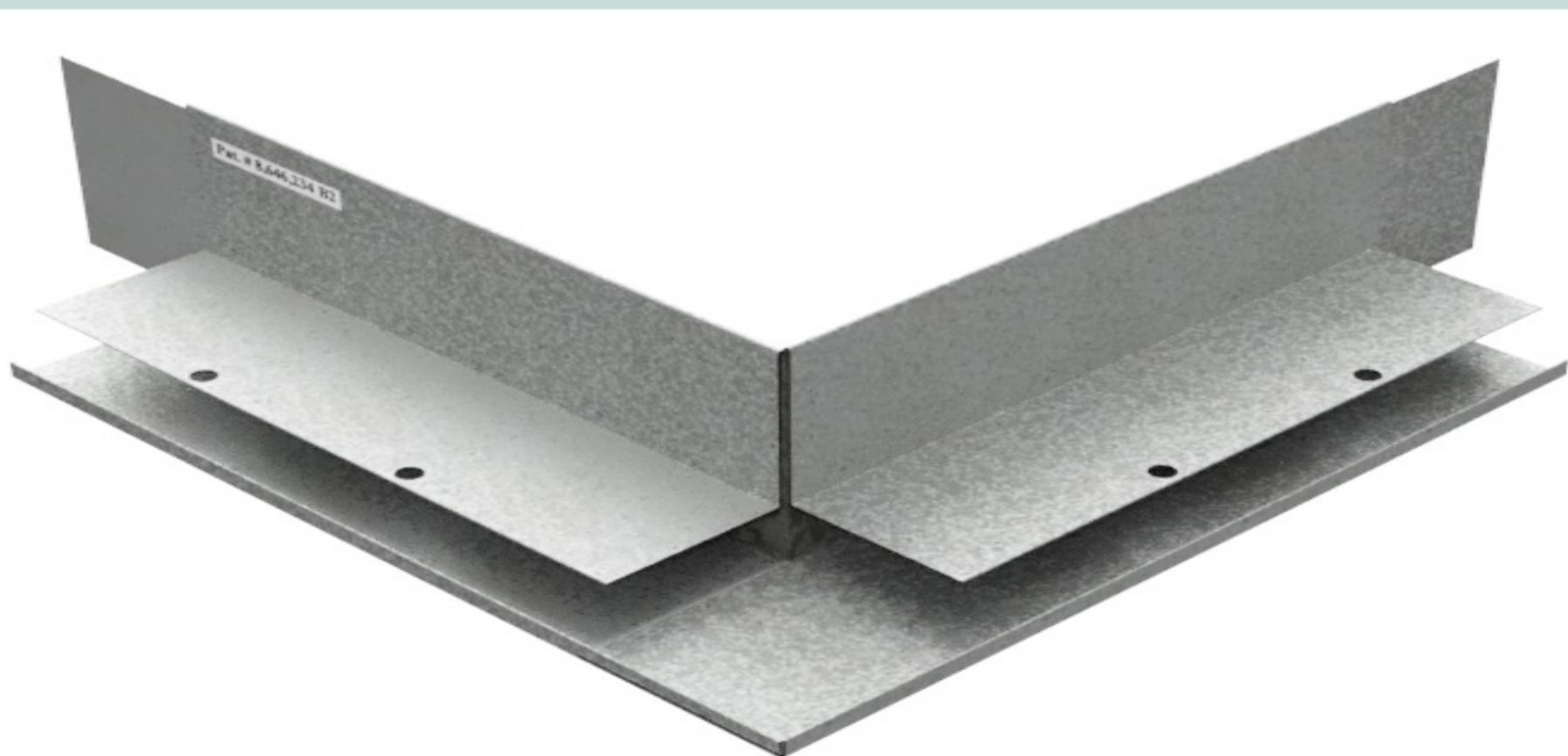
Wire tie every other hole & install vertical furring strips on every stud. Do not use spray foam.

Plaster Stop Inside & Outside Corners

DIAMOND <> FURR TT-4®
General Installation Guideline

Stop Corner Setup

Inside and outside corners are field miter cut and then fitted together with provided splicing plates. Polyurethane or silicone caulking must be used where corners splice together & all butt joints. Field-cut precise miters on inside and outside corners lock seamlessly with the included 26 Ga galvanized clips for a smooth, unified look. Fabrication clips make installation a breeze, ensuring perfect corners every time. Splicing clips and L angle connection clips are provided.



Wire tie every other hole & install vertical furring strips on every stud. Do not use spray foam.