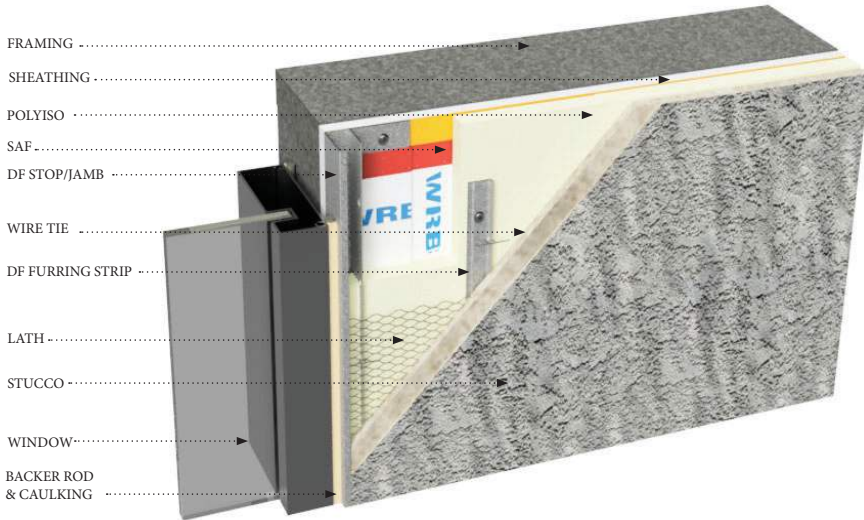
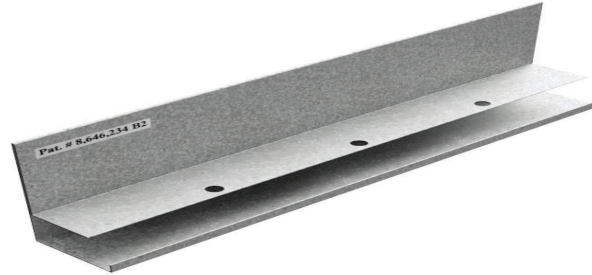


PLASTER STOP OVERVIEW: DFS



DESCRIPTION

The Diamond-Furr Termination Trims for Continuous Insulation (CI) Systems are designed specifically for projects using 3-coat plaster over rigid insulation in compliance with the new energy code criteria. Diamond-Furr termination trims eliminate 100% of the fastener penetrations through the WRB around critical opening such as windows and doors while providing an uninterrupted 3/8" furring for superior lath embedment.

The C.I. System Plaster Stop (pt # DFS-1375) is designed to be used at termination points such as doors and windows just like a conventional J-mold. The Diamond-Furr Plaster Stop has a built-in furring strip which extends 3/8" beyond the rigid insulation. This strip creates an uninterrupted 3/8" furring as well as a flexible connection point for metal lath. The Lath is secured using tie wire through the provided attachment holes and finished with a butterfly tie. Diamond-Furr Termination Trims effectively eliminate 100% of the fastener penetrations through the WRB at these critical points.

The Diamond-Furr Plaster Stop works in conjunction with the Diamond-Furr C.I. System Furring Strips which eliminate 55% penetrations through the moisture barrier in the field. We recommend using the complete Diamond-Furr C.I. System for the best possible protection against moisture intrusion, superior lath embedment, minimized thermal bridging and significantly reduced exposure to moisture intrusion liability.

For warranty purposes, please refrain from using spray foam with this system.

MATERIAL

MATERIAL: Galvanized Steel G90

THICKNESS: 22 GA

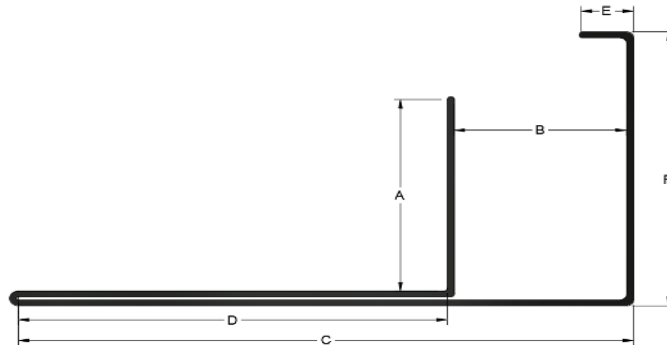
LENGTH: Standard 10 ft.

STANDARD SPECIFICATION

- ASTM A653
- ASTM C1063
- ASTM C926
- ASTM C1861



PLASTER STOP ID: DFS



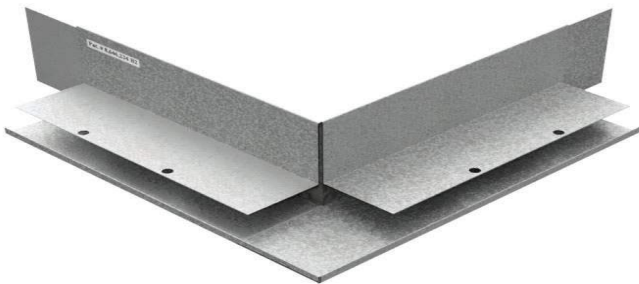
J STOP

ID	POLYISO	A	B	C	D	E	F
DFS-1375	1"	1-3/8"	1"	3-1/2"	2-1/2"	1/4"	1-7/8"
DFS-15375	1-1/2"	1-7/8"	1"	3-1/2"	2-1/2"	1/4"	2-3/8"
DFS-2375	2"	2-3/8"	1"	3-1/2"	2-1/2"	1/4"	2-7/8"
DFS-3375	3"	3-3/8"	1"	3-1/2"	2-1/2"	1/4"	3-7/8"

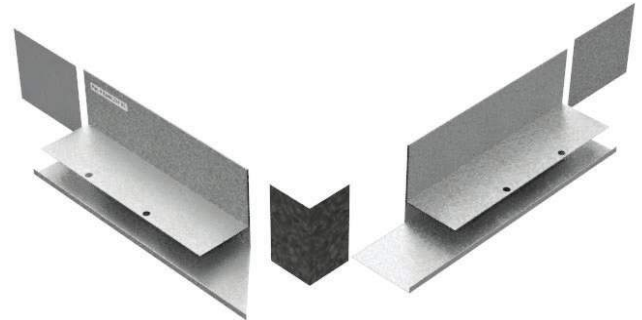
STOP CORNER ASSEMBLY OVERVIEW

Inside & outside corners are field miter cut & then fitted together with provided splicing plates. Polyurethane or silicone caulking must be used where corners splice together & all butt joints. Field-cut precise miters on inside and outside corners lock seamlessly with the included 26 Ga galvanized clips for a smooth, unified look. Fabrication clips make installation a breeze, ensuring perfect corners every time. Splicing clips and L angle connection clips are provided.

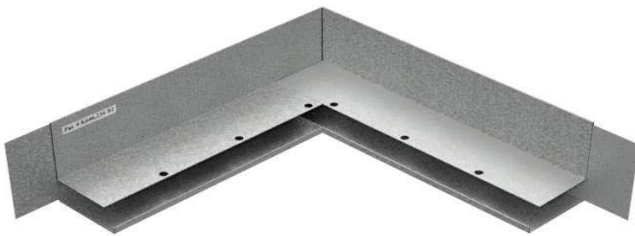
OUTSIDE CORNER COMPLETE



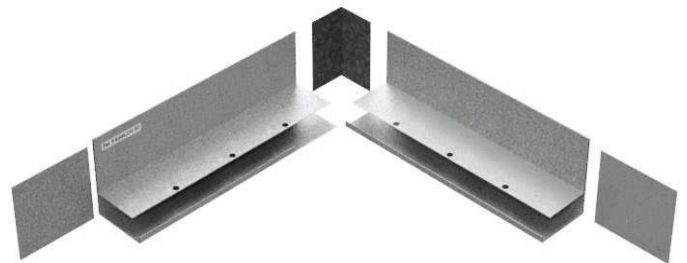
OUTSIDE CORNER ASSEMBLY



INSIDE CORNER COMPLETE



INSIDE CORNER ASSEMBLY



L-ANGLE CORNER



SOLDERED CORNER CLIP: PCC

