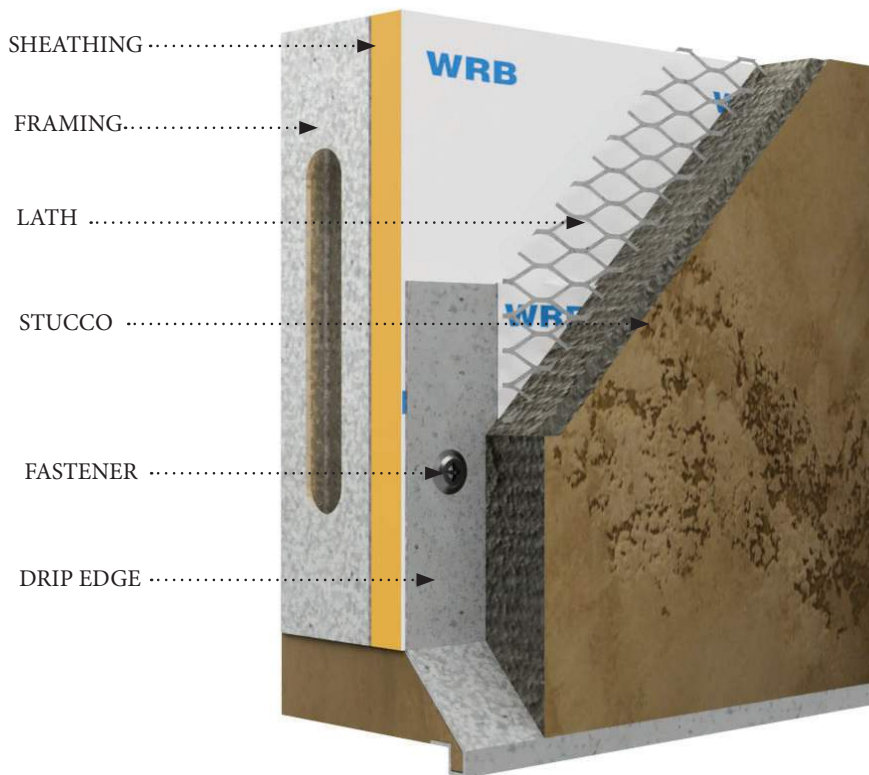
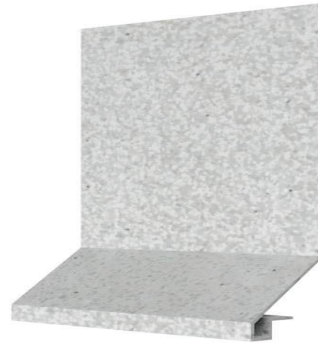


BXM DRIP EDGE OVERVIEW



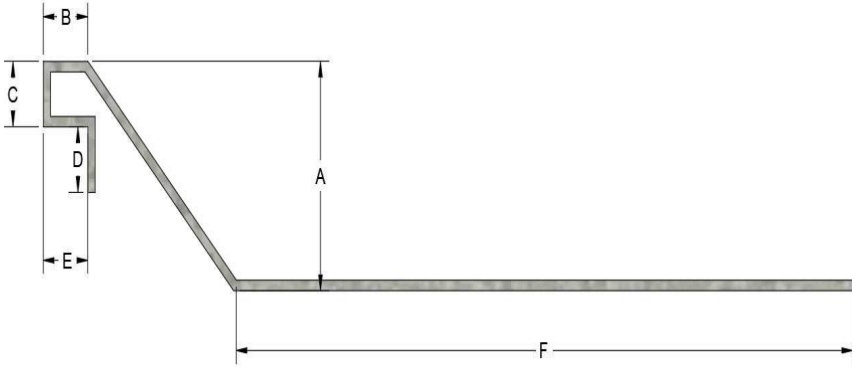
DESCRIPTION

Stucco drip edge is used to protect your home from water damage. Our stucco drip edge is installed at the bottom of a stucco wall. The drip edge directs water away from the structure preventing it from seeping behind the stucco or causing damage to the building. Here are some additional benefits of using stucco drip edge and drip molding:
 They can help prevent mold and mildew growth.
 They can extend the lifespan of your stucco and other exterior finishes.

MATERIAL

MATERIAL: Galvanized Steel G90
 THICKNESS: 26 GA
 LENGTH: Standard 10 ft.
 FINISH:
 ASTM A653

BXM DRIP EDGE OVERVIEW ID CHART



ID	DIM A	DIM B	DIM C	DIM D	DIM E	DIM F
BXM 875	7/8"	1/4"	1/4"	1/4"	1/4"	3-1/2"
BXM 1375	1-3/8"	1/4"	1/4"	1/4"	1/4"	3-1/2"