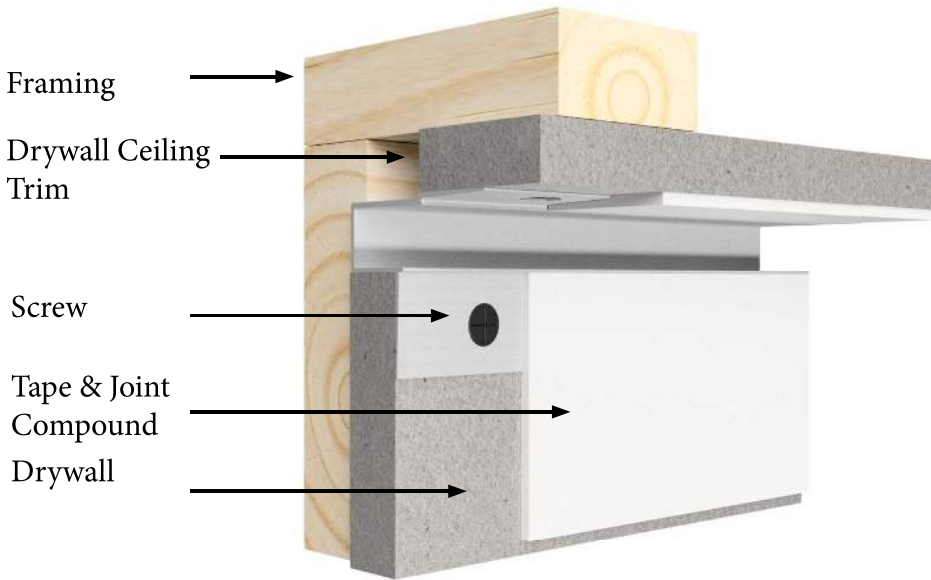
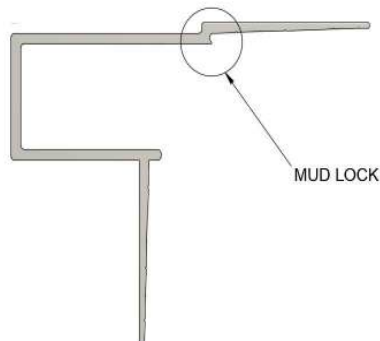


DRYWALL CEILING TRIM OVERVIEW



EXCLUSIVE MUD LOCK



DESCRIPTION

The Extruded Aluminum Drywall Ceiling Trim, is a decorative and functional element, is used to create a transition between the walls and ceiling, giving the illusion of a floating wall. It also provides support to the perimeter of the drywall ceiling, ensuring it stays securely in place and does not sag or bow over time.

MATERIAL

MATERIAL: Aluminum Alloy 6063
 T5 ASTM: B221
 THICKNESS: Nominal .050
 LENGTH: Standard 10 ft.
 FINISH: Standard-Clear anodized Architectural 200R1 Medium Etch AAM32C10A21

Also available: 'Mill Finish' for field painting and custom anodized colors.

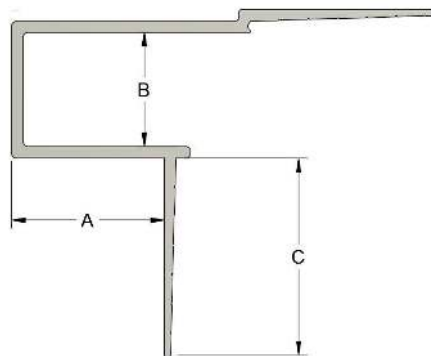
OPTIONS

Radius - Drywall Ceiling Trims can be curved to meet your required job specifications (Radius Order Form)

NOTES

USED FOR 1/2" & 5/8" DRYWALL

DRYWALL CEILING TRIM ID CHART



| ID | DIM A | DIM B | DIM C |
|--------------|-------|-------|-------|
| DRCT 50-50 | 1/2" | 1/2" | 3/4" |
| DRCT 50-75 | 1/2" | 3/4" | 3/4" |
| DRCT 50-100 | 1/2" | 1" | 3/4" |
| DRCT 625-50 | 5/8" | 1/2" | 3/4" |
| DRCT 625-75 | 5/8" | 3/4" | 3/4" |
| DRCT 625-100 | 5/8" | 1" | 3/4" |

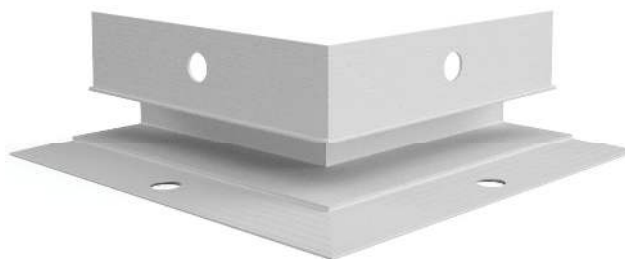
DRYWALL CEILING TRIM INTERSECTIONS & CORNERS

Inside and outside corners are miter cut and then welded on the nail flanges. The standard size is 6" x 6" but we will gladly fabricate whatever size your job requires for easier installation.

INSIDE CORNER



OUTSIDE CORNER



DRYWALL CEILING TRIM RADIUS/CURVING

Brand X Metals, Inc. has in-house capabilities to curve interior and exterior trims for your job specifications. Drywall ceiling trim can be curved in all four directions.

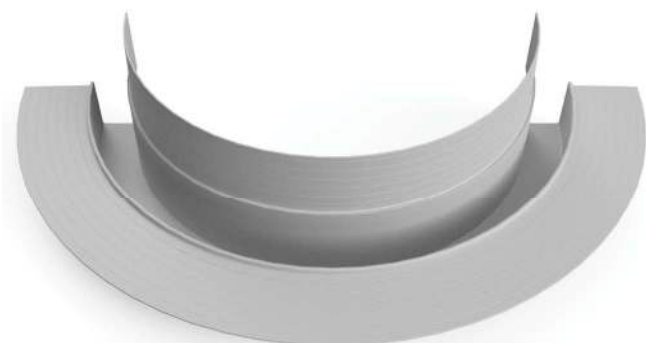
TYPE-1



TYPE-2



TYPE-3



TYPE-4

